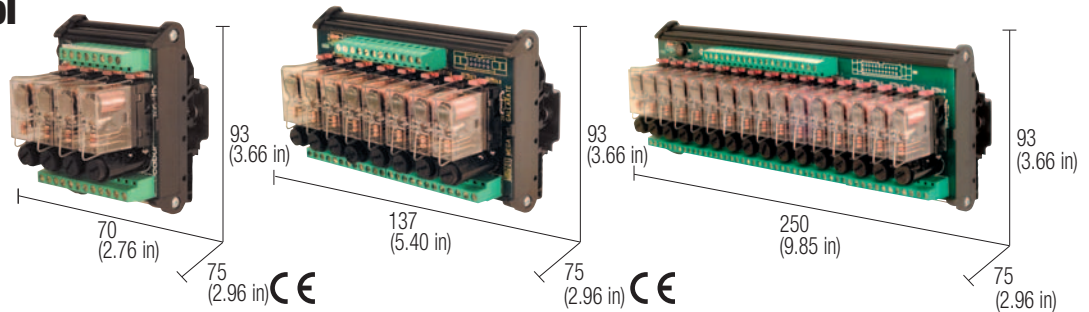


# 24 Vac/dc SPDT relay modules universal control voltage with fuse

- DC and AC control voltage
- Positive or negative control voltage
- Status LED display
- Pluggable relay
- Output contact with protection fuse



## NOTES

The height dimension includes 35 mm DIN rail. (1) Relay model is not binding, they may be modified without prior warning. The technical data shown here is to be considered typical. (2) The interface is supplied without a fuse and the screw plug of the fuse-holder is provided in a bag inside the packaging. The fuse must be dimensioned according to load. The max. value of 6.3 A is referred to EN60127-complying fuses and the homologation rated current of the fuseholder. Fuses of a higher value may damage the fuseholder and module.

## VERSIONS

4 relay module

8 relay module

16 relay module

## INPUT TECHNICAL DATA

|                           |                                    |
|---------------------------|------------------------------------|
| Rated voltage             | 24 Vac/dc $\pm 10\%$               |
| Rated current (1 channel) | 22 mA $\pm 10\%$                   |
| Turn ON time              | 15 ms                              |
| Turn OFF time             | 10 ms                              |
| Protection circuit        | damping diode and bridge rectifier |

## OUTPUT TECHNICAL DATA

|                             |                                    |
|-----------------------------|------------------------------------|
| Type and number of contacts | SPDT AgSnO <sub>2</sub> per 4 relé |
| Nominal load (resistive)    | 12 A / 250 Vac                     |
| Current breaking power      | 12 A                               |
| Current of the fuse max.    | 6,3 A (2)                          |

## GENERAL TECHNICAL DATA

|   |   |
|---|---|
| Operating temperature range             | -10...+50°C   |
| Coil/contact isolation                  | 2.5 kVac / 60 s                                       |
| Isolation between output terminals      | 1 kVac / 60 s (between open contact)                  |
| Protection degree                       | IP 00 IEC 529, EN60529                                |
| Overvoltage category / Pollution degree | III / 2   |
| Reference Standard                      | IEC 664-1, DIN VDE 0110.1                             |
| Status display                          | green LED / yellow LED                                |
| Connection terminal                     | 2.5 mm <sup>2</sup> fixed screw type                  |
| Housing material                        | UL94V-0 plastic material                              |
| Approx. weight                          | 210 g (7.41 oz)   326 g (11.51 oz)   770 g (27.18 oz) |
| Mounting information                    | vertical on rail adjacent without gap                 |

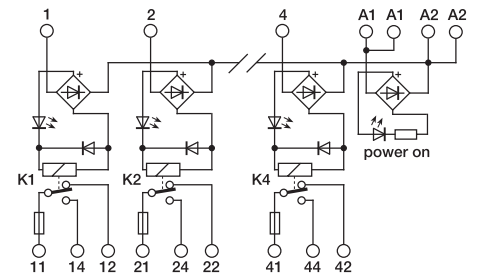
## MOUNTING ACCESSORIES

|   |  |
|---|--|
| Mounting rail type according to IEC60715/TH35 | PR/3/AC, PR/3/AC/ZB, PR/3/AS, PR/3/AS/ZB |
| Mounting rail type according to IEC60715/G32  | PR/DIN/AC - PR/DIN/AS - PR/DIN/AL        |
| Replacement relay (1)                         | Cat. No. 8904001                         |
| Screw type jumper                             | red<br>white<br>blue                     |

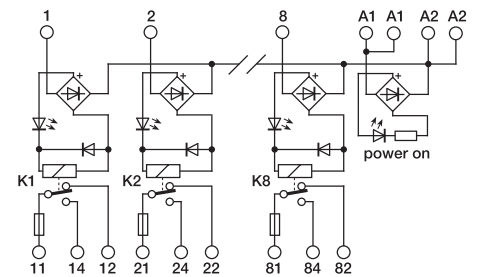
## POWER SUPPLY

|        |        |                 |
|--------|--------|-----------------|
| A1 = + | A2 = - | negative common |
| A1 = - | A2 = + | positive common |
| A1 = ~ | A2 = ~ | AC power supply |

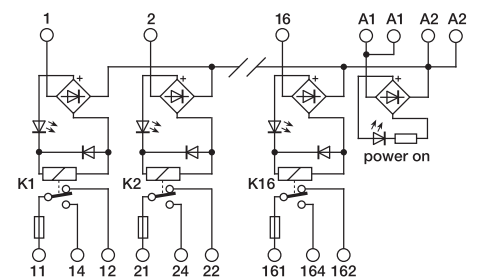
## BLOCK DIAGRAM



4 relay module



8 relay module



16 relay module