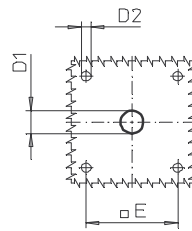
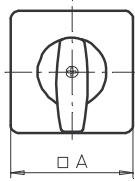
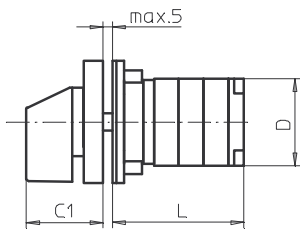
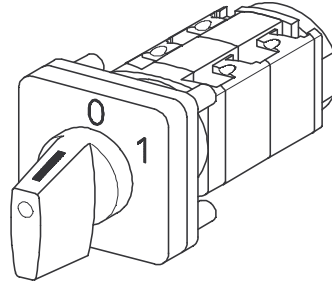


Front Mounting Switches



**Product line
P200**

Front mounting switch
Operator module of next size

Four hole mounting
48 x 48 mm

013M1 (IP66)

Complete switch	Poles	Product line	Rated data (IEC 60947)			Order code number
			Operational current I _e	Operational power at 380–440 V		
			AC-21A A	AC-23A kW	AC-3 kW	
Rotary Cam Switches Switching angle 30°/45°/60°/90°	1 ... 24	P200	20 25	7,5 11	5,5 7,5	P220 - 61 ... - 013M1 P225 - 61 ... - 013M1

SMD modules for basic switch A01			
Mounting form module for 013M1		P200	BFB2 - 013
M-operator module 64 x 64 mm, mounting form 013M1			4AM1
Escutcheon black, handle black			
Legend plate silver, operator module 013M1			FAS4 - (FA number)

Type	Dimensions (mm)													
	A	C1	D	D1	D2	E	L with ... stages (max. 12)						each add. stage	
							1	2	3	4	5	6	7	
P220	64	39	44	15	5	48	47	60	73	86	99	112	125	13
P221	64	39	44	15	5	48	50,5	67	83,5	100	116,5	133	149,5	16,5
P225	64	39	46	15	5	48	51	66	81	96	111	126	141	15
P226	64	39	46	15	5	48	54,5	73	91,5	110	128,5	147	165,5	18,5