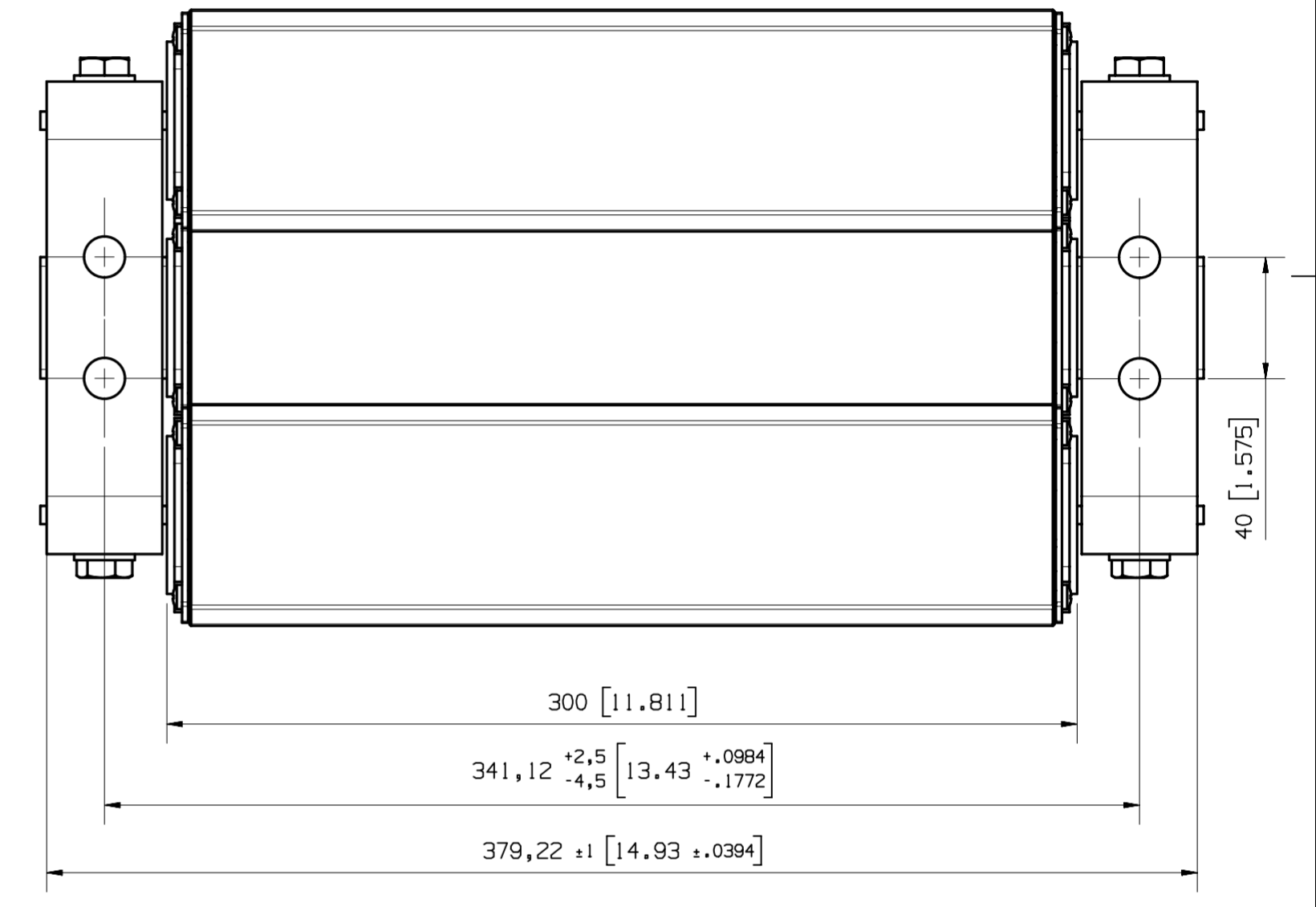
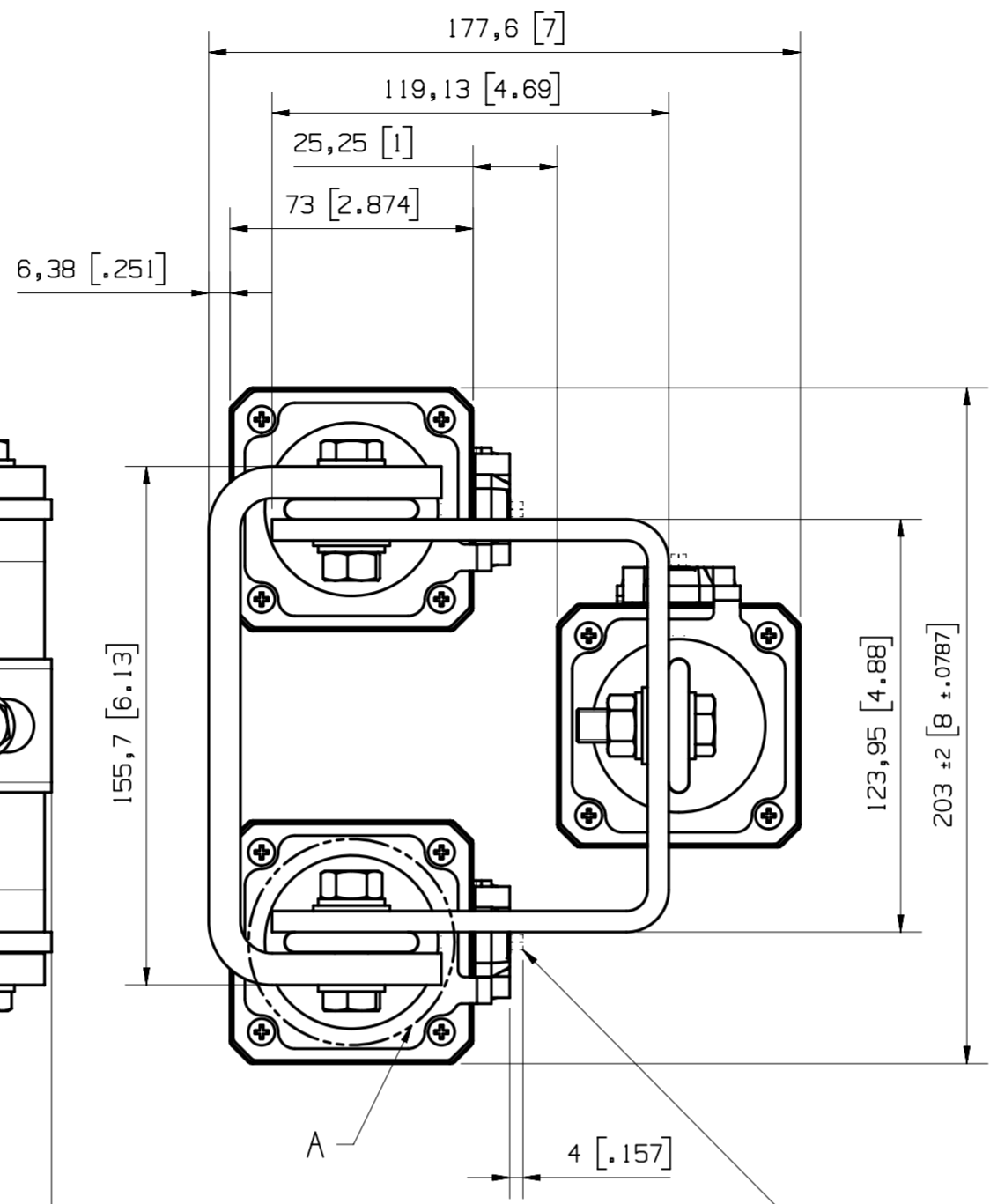
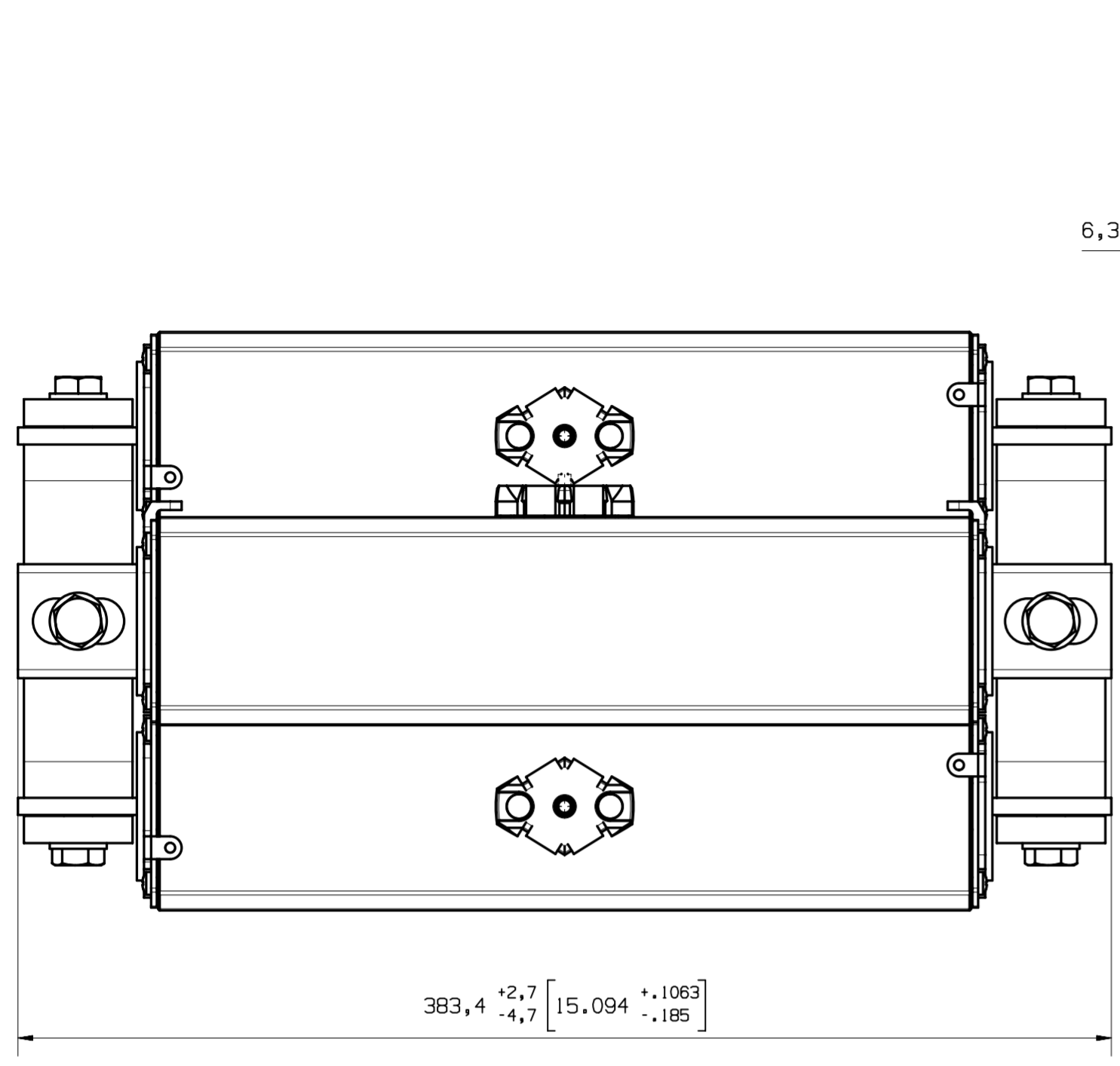
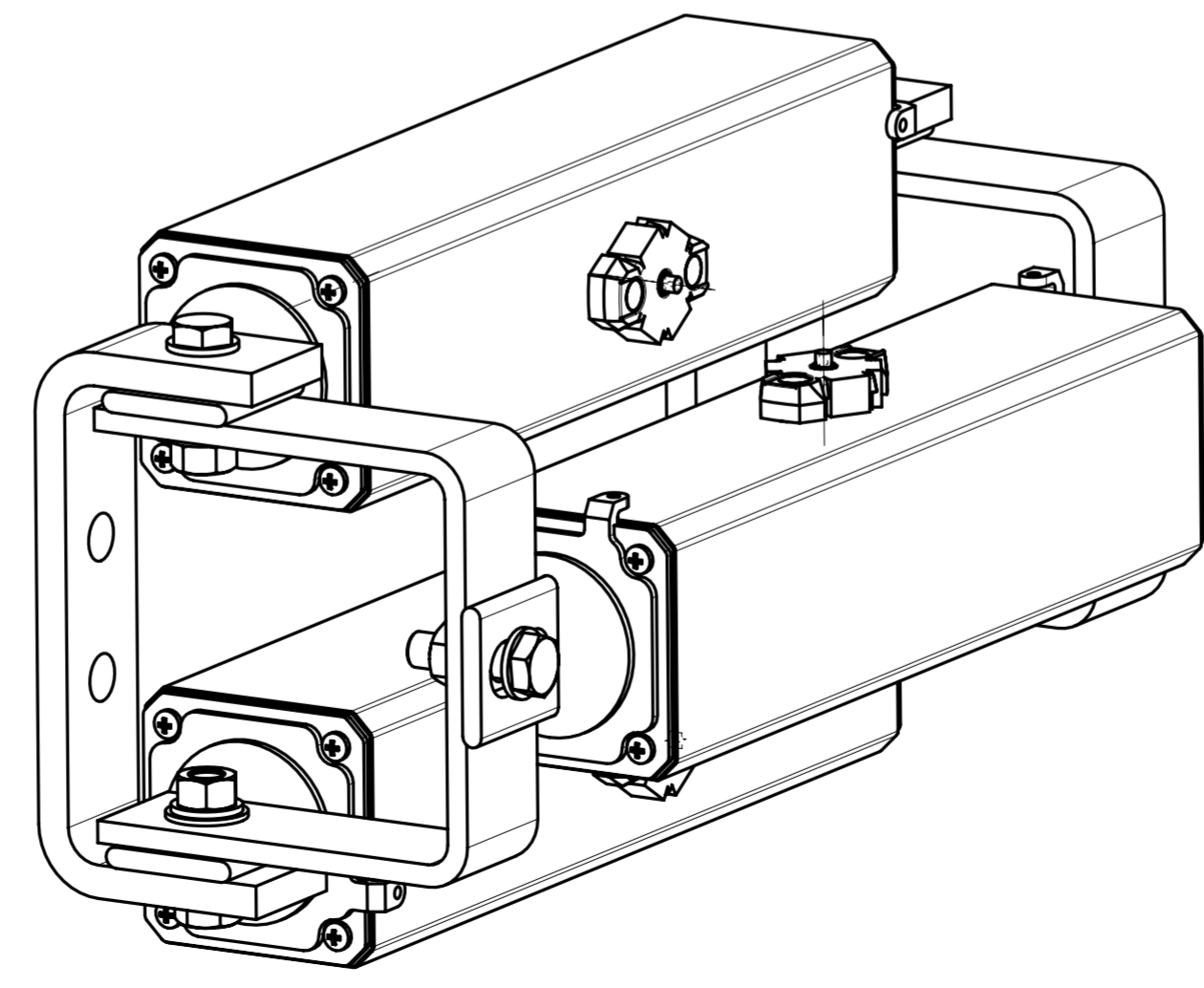
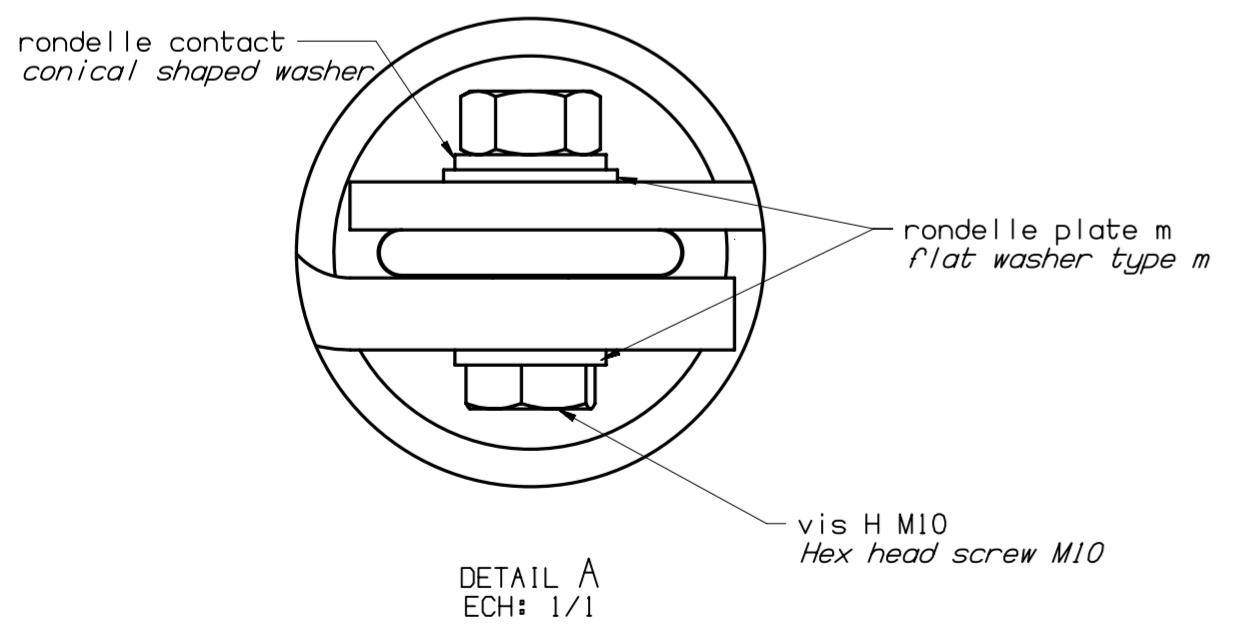


Date	Indice Rev	Désignation de la modification Modification description	N° modif Modif. N°	Realise par Operated by	Verif par Check by
		PLAN CAO MODIFICATION MANUELLE INTERDITE			



Indicateur percuteur declanche apres fusion
Trip indicator when the fuse has blown

Couple de serrage : 15 a 26Nm
Torque : 11 to 19 FT-LBS



Matiere: - Material:		Tolerances generales sauf specifie General tolerances unless specified:	
Protection: - Finish:		Masse: - Weight:	Ech: 1:2 Scale:
Date 23/05/12	Dessine par: V. ADAM Drawn by:	Verifie par: M. VIENNOIS Checked by:	
Ce plan strictement confidentiel est la propriété exclusive de la société MERSEN sans l'autorisation écrite de laquelle il ne peut être ni reproduit, ni copié, ni communiqué à des tiers. This drawing and specifications there on is property of MERSEN and shall not be reproduced or copied or used in whole or in part as the base for manufacture or sale of item without written permission			Ancien numero dessin: Old drawing number:

CARTOUCHE PORTE FUSIBLE
FUSE CARTRIDGE
3 X 303 Qsp

MERSEN

1012270

Format / Size: A2