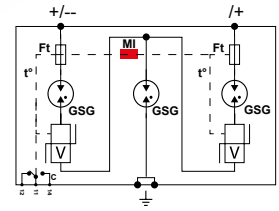
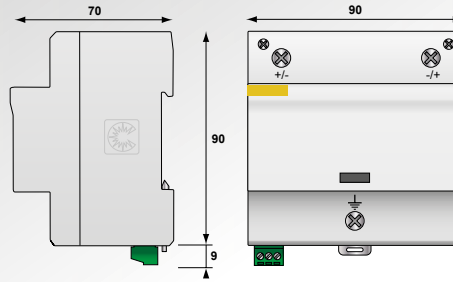


Type 1+2 PV Surge Protector DS60VGPV/51 series



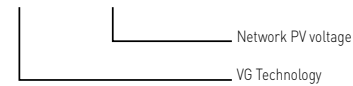
CITEL



GSG: Gas-filled spark gap
V : High energy MOV
Mi : Disconnection indicator
Ft : Thermal fuse
t° : Thermal disconnection mechanism
C : Contact for remote signal

- Type 1+2 Surge Protector for Photovoltaic
- VG-Technology
- No leakage, no operating currents
- Improved life expectancy
- Impulse currents I_{limp}/I_{total} : 12.5/25 kA @ 10/350 μ s
- Common and Differential mode protection
- Remote Signaling
- EN 50539-11 compliance
- VDE and OVE approved

DS60VGPV-xxxG/51



Characteristics

CITEL Model	DS60VGPV-600G/51	DS60VGPV-1000G/51	DS60VGPV-1500G/51
Description	Type 1+2 PV surge protector		
Network	Uocstc PV network 600 Vdc	PV network 1000 Vdc	PV network 1250 Vdc
Connection mode	+/-/PE	+/-/PE	+/-/PE
Protection mode(s)	CM/DM	CM/DM	CM/DM
Max. PV operating voltage	Ucpv 720 Vdc	1200 Vdc	1500 Vdc
Permanente operating current - Leakage current at Ucpv	Icpv None	None	None
Residual current - Leakage current at Ucpv	Ipe None	None	None
Nominal discharge current - 15 x 8/20 μ s impulses	In 20 kA	20 kA	20 kA
Max. discharge current - max. withstand @ 8/20 μ s by pole	I _{max} 40 kA	40 kA	40 kA
Impulse current by pole - max. withstand 10/350 μ s	I _{limp} 12.5 kA	12.5 kA	12.5 kA
Total lightning current - max. total withstand @ 8/20 μ s	I _{total} 25 kA	25 kA	25 kA
Protection level CM/DM @In (8/20 μ s) and @ 6kV (1.2/50 μ s)	Up 2.2/2.8 kV	4.7/5.4 kV	4.7/5.4 kV
Current withstand short circuit PV	Iscpv 15000 A	15000 A	15000 A
Associated disconnectors			
Thermal disconnector	internal		
Fuses	without		
Mechanical characteristics			
Dimensions	see diagram		
Connection to Network	screw terminals: 6-35mm ²		
Disconnection indicator	1 mechanical indicator		
Remote signaling of disconnection	Output on changeover contact - 250 Vac/0.5 A (AC) - 30 Vdc /3 A (DC)		
Mounting	Symmetrical rail 35 mm (EN60715)		
Operating temperature	-40/+85°C		
Protection rating	IP20		
Housing material	Thermoplastic UL94-V0		
Standards compliance	EN50539-11 / UTE C61740-51		
Certification	EAC	VDE / OVE / EAC	EAC
Part number	3963	3958	3956

*) CM = Common mode (+/PE or -/PE) - DM = Differential mode (+/-)

