

NH fuse switch-disconnector size 2, 400 A, busbar mounted, connection top / bottom (33602)



Description

Part No.: 33602

QUADRON® 60Classic

NH fuse switch-disconnector size 2, 400 A, busbar mounted, connection top / bottom
screw M10

for busbars 12, 20, 30 x 10 and section busbars

System

60Classic

Product group 09

Subgroup 30

pack size 1

EAN 4021267336028

Advantages of the product

Disconnectors are equipped with arc chambers.

The shock protection is split into 2 for safe connection of the conductors.

Self-closing inspection holes are available in the cover.

catalog page 2020 : 3.23

eCl@ss 6.1 27142108

eCl@ss 7.1 27142108

ETIM 4.0 EC001040

ETIM 5.0 EC001040

Approvals

Standards

IEC 60947-1:2007 + A1:2010 + A2:2014

IEC 60947-3:2008 + A1:2012 + A2:2015

GB/T 14048.3

Approvals

IEC (CB) , UL , KEMA , CCC , DNV GL



for UL feeder circuits >250V

type number: LTS-2

UL file: E230163, UL category (for USA): IZLT2 <http://www.ul.com>

CCC certificate: 2004010302117262

Product data

for fuse-links size: NH 2

fuse-link acc. to standard: IEC / HD 60269-2

permitted power dissipation of the fuse-link: 34 W

Details IEC

Standards

IEC 60947-1:2007 + A1:2010 + A2:2014

IEC 60947-3:2008 + A1:2012 + A2:2015

GB/T 14048.3

Electrical data IEC

Rated current (IEC): 400 A

rated voltage (IEC) AC: 690 V

rated voltage (IEC) DC: 440 V

rated isolation voltage U_i AC: 800 V

rated isolation voltage U_i DC: 500 V

rated surge voltage U_{imp} : 6 kV

Utilisation category AC (IEC 60947-3) : AC-23B (400V)
AC-22B (690V)
AC-21B (690V)
AC-20B (1000V) at pollution degree 2

visible information required if used at more than 690V AC: do not switch under load

Utilisation category DC (IEC 60947-3) : DC specifications: 2 current paths (L1,L3) in series
DC-22B (440 V)
DC-21B (440 V)
DC-20B (1000V) at pollution degree 2

visible information required if used at more than 440V DC: do not switch under load

cond. short-circuit current with fuses (AC): 100 kA / 690 V (400 A)

approved with fuse links of operation class: gG

rated short-time withstand current I_{CW} (1.0 s) max.: 13.2 kA

power dissipation of the article:

The power dissipation at a typical load of 80% of the rated current results to 28.8 W.

(The power dissipation for operation with rated current would be 45 W.)

Supplementary data IEC

The following values have been verified with tests under certain conditions. Please ask Wöhner for this conditions before designing your panel.

max. permitted voltage (IEC) DC: 800 V

A fuse-combination unit acc. to IEC 60947-3 can only be operated at a higher voltage than its rated voltage, if it is used as a fuse-disconnector without breaking capacity, up to its max. rated insulation voltage and labelled as such.

rated peak withstand current I_{pk} max.: 27.2 kA

Entsprechend den angegebenen AC- und DC- Schalteigenschaften und unter Berücksichtigung der Überlastbedingungen, sind gewisse Abstände zu geerdeten Metallteilen einzuhalten. Nähere Informationen auf Anfrage.

Bei Verwendung als Trennschalter ist die Einhaltung der Abstände nicht erforderlich

Degree of protection IP30 at front, degree of protection near terminal depends on installation

Details UL

Standards

UL 4248-1

for UL feeder circuits >250V

Electrical data UL

rated current (UL): 400 A

rated voltage (UL) AC: 600 V

SCCR: 100 kA

Mechanical data

W x H x D: 210 x 288 x 145

weight: 522 kg/100

poles: 3-pole

for busbars: 12, 20, 30 x 10 and section busbars

front degree of protection: IP30

Type of fastening: patented click mechanism

Terminal points

screw M10 :

Md 30 - 35 Nm

Accessories:

Clamp connection: Cu 120-240mm² s(r), f+AE; lam. Cu 21x1-14; 6-8Nm torque

single wedge clamp terminal: Cu, Al* 50-150/120-240mm² s(r), s(s), f, f+AE; 6-8Nm torque

double wedge clamp terminal: Cu 2x 70-120mm² s(r), s(s), f+AE; 6-8Nm torque

*Connections are not maintenance-free if aluminium conductors are used.

Material properties

Main body: temperature stability 125°C,
self-extinguishing in acc. to UL 94,
creepage resistance CTI 200,
halogen-free

Shock protection cover: temperature stability 125°C,
self-extinguishing in acc. to UL 94,
creepage resistance CTI 600,
halogen-free

Handle: temperature stability 125°C,
self-extinguishing in acc. to UL 94,
creepage resistance CTI 200,
halogen-free

Adapter plate: temperature stability 125°C,
self-extinguishing in acc. to UL 94,
creepage resistance CTI 200,
halogen-free

Contacts: spring-loaded copper contacts, silver plated

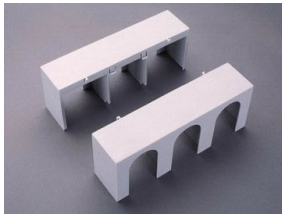
Connecting screws: screw M10, galvanized, chromized

Version

Variant with electronic fuse monitoring: 33 326

Variant with electromechanical fuse monitoring: 33 161

Accessories



33143

cover for cable lugs, top / bottom attachable
for QCB-NH2



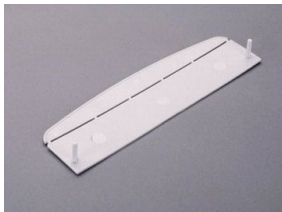
33146

prism terminal, double, for Cu cables
2x 70 - 120 mm²
size 2



33148

conversion kit
for 5 mm busbars
size 2



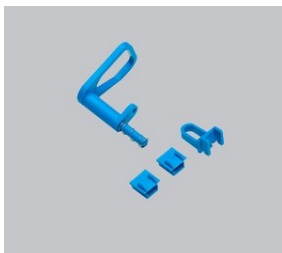
33155

barrier for handle for NH fuse-switch disconnectors size 1-3
for closing of handle area from rear



33156

pilot switch
changeover 250 V AC / 5 A, 30 V DC / 4 A



33157

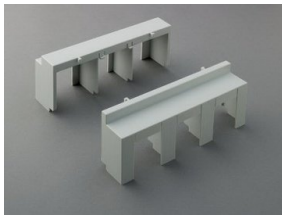
lid interlock
for sealing wire or 3 padlocks with shackle of 4 - 7 mm
Size 1 - 3



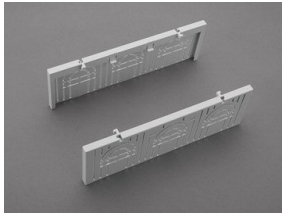
33164
clamp connector for Cu cables
120 - 240 mm²
QCB-NH2, LTS-F 400, LTS 630



33167
prism terminal, single, for Cu and Al cables
50 - 240 mm²



33316
trim cover, 2 parts
for NH-LTS size 2
size 2



33418
connection shroud
for NH fuse-switch-disconnector size 2