

---

## BETAETIGER-S-WQT-SN (ORDER NO. 095740)

Actuator S, bent, for safety switch SGA/SGP/STA/STP/STM

- ▶ Two safety screws included



### Description

#### Notice

Type S actuators must not be used in conjunction with insertion funnels. L actuators must be used for insertion funnels.

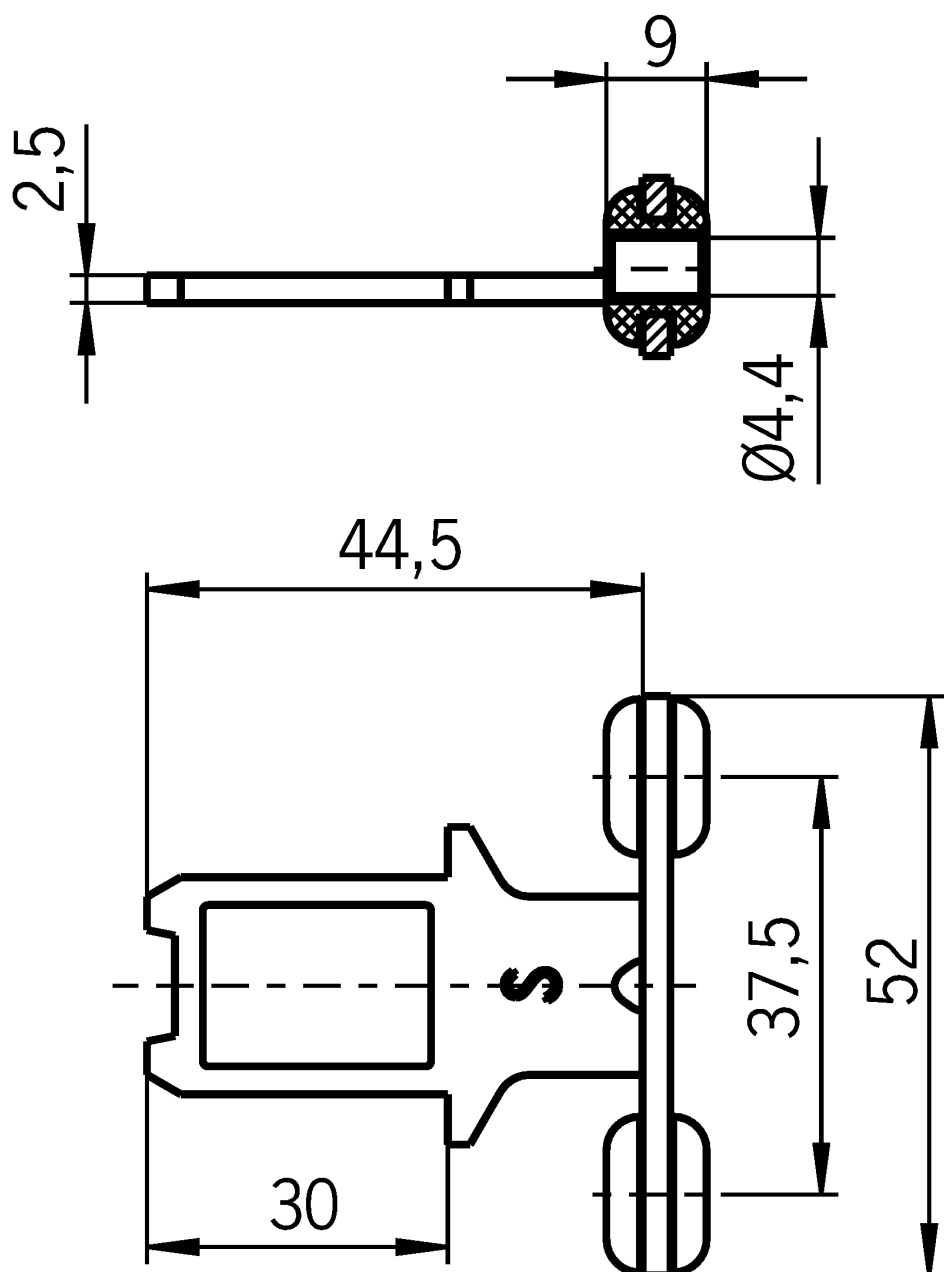
#### Bent actuator

Suitable for a maximum tensile force of 1000 N.

#### Screws made of stainless steel

The safety screws included can be inserted with a normal tool, but cannot be removed again.

#### Dimension drawings



## Technical data

### Mechanical values and environment

Door radius	min. 300 mm
Locking force $F_{\max}$	max. 1000 N reduced locking force by actuator
Material	
Actuator	Stainless steel
Rubber bush	NBR
Screw	Stainless steel
Overtravel	max. 5 mm

### Miscellaneous

Usability of insertion funnel	no
-------------------------------	----

## Accessories

### Mounting accessories

## Safety screws M4 x 14

---

**074063**  
M4X14/V100

- ▶ Safety screws M4 x 14
- ▶ Packaging unit 100 pieces

## Safety screws M4 x 14, large head

---

**086232**  
M4X14-NIRO/V100

- ▶ Safety screws M4 x 14 (large head)
- ▶ Packaging unit 100 pieces

## Contacts

🏠 EUCHNER GmbH + Co. KG  
Kohlhammerstraße 16  
70771 Leinfelden-Echterdingen

☎ +49 711 7597-0

📠 +49 711 753316

✉ [info\(at\)euchner.de](mailto:info(at)euchner.de)