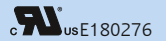
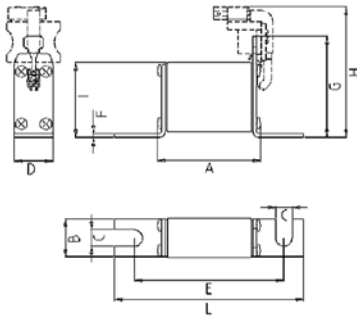


690/700 V NH 000 DIN 80



Verpackungseinheit / Packing unit: 6 Stück / 6 pieces



| | |
|-------------------------------------|--|
| Betriebsklasse / Class aR | IEC 60 269-4 VDE 0636-4 UL 248-13 |
|-------------------------------------|--|

| Artikel Nr. Article No. | Größe Size | Länge Length | | | | | | | | | | |
|----------------------------|---------------|-----------------|----|----|-----|------|----|----|----|----|----|-----|
| | | In/A | A | B | C | D | E | F | G | H | I | L |
| | | A | mm | mm | mm | mm | mm | mm | mm | mm | mm | mm |
| 20 282 20 | NH000/DIN 80 | 32-315 | 55 | 20 | 8,5 | 20,5 | 78 | 2 | - | 70 | 39 | 100 |
| 20 558 20* | | 350-400 | | 20 | 8,5 | 20,5 | | 2 | | 70 | | 100 |
| 20 282 20 | | | | | | | | | | | | |
| 20 558 20* | | | | | | | | | | | | |

Bemessungsausschaltvermögen / Rated breaking capacity 200 kA @ 700 V

| Bemessungsstrom Rated Current | Artikel Nr. Article No. | | Gewicht Weight | Bemessungs- spannung Rated Voltage | | Schmelz- integral Pre-Arcing- I ² t-Value | Ausschalt- integral Total I ² t-Value @ AC 660 V | Leistungs- abgabe Power Loss |
|----------------------------------|----------------------------------|--|-------------------|--|--------------|---|--|------------------------------------|
| | mit Kennmelder with indicator | für ext. Meldeschalter/ for ext. switch* | | IEC 60269-4 | UL 248-13 | | | |
| | A | | | kg / 1 | V | | | |
| 32 | 20 282 20.32 | 20 558 20.32 | 0,14 | 690 | 700 | 52 | 290 | 8 |
| 35 | 20 282 20.35 | 20 558 20.35 | 0,14 | 690 | 700 | 66 | 360 | 9 |
| 40 | 20 282 20.40 | 20 558 20.40 | 0,14 | 690 | 700 | 90 | 500 | 10 |
| 50 | 20 282 20.50 | 20 558 20.50 | 0,14 | 690 | 700 | 140 | 770 | 12 |
| 63 | 20 282 20.63 | 20 558 20.63 | 0,14 | 690 | 700 | 250 | 1.400 | 14 |
| 80 | 20 282 20.80 | 20 558 20.80 | 0,14 | 690 | 700 | 470 | 2.600 | 18 |
| 100 | 20 282 20.100 | 20 558 20.100 | 0,14 | 690 | 700 | 730 | 4.000 | 22 |
| 110 | 20 282 20.110 | 20 558 20.110 | 0,14 | 690 | 700 | 890 | 4.900 | 24 |
| 125 | 20 282 20.125 | 20 558 20.125 | 0,14 | 690 | 700 | 1.300 | 7.200 | 26 |
| 150 | 20 282 20.150 | 20 558 20.150 | 0,14 | 690 | 700 | 2.000 | 11.000 | 29 |
| 160 | 20 282 20.160 | 20 558 20.160 | 0,14 | 690 | 700 | 2.800 | 15.400 | 32 |
| 180 | 20 282 20.180 | 20 558 20.180 | 0,14 | 690 | 700 | 3.700 | 20.400 | 35 |
| 200 | 20 282 20.200 | 20 558 20.200 | 0,14 | 690 | 700 | 4.500 | 25.000 | 39 |
| 225 | 20 282 20.225 | 20 558 20.225 | 0,14 | 690 | 700 | 6.600 | 37.000 | 44 |
| 250 | 20 282 20.250 | 20 558 20.250 | 0,14 | 690 | 700 | 8.000 | 44.000 | 47 |
| 315 | 20 282 20.315 | 20 558 20.315 | 0,14 | 690 | 700 | 14.000 | 77.000 | 58 |
| 350 | 20 282 20.350 | 20 558 20.350 | 0,14 | 500 | - | 23.800 | @ AC 550 V 76.000 | 56 |
| 400 | 20 282 20.400 | 20 558 20.400 | 0,14 | 500 | - | 32.100 | @ AC 550 V 106.000 | 70 |

* Optional: GL-Meldeschalter siehe Seiten 43-44
GL-switch see pages 43-44

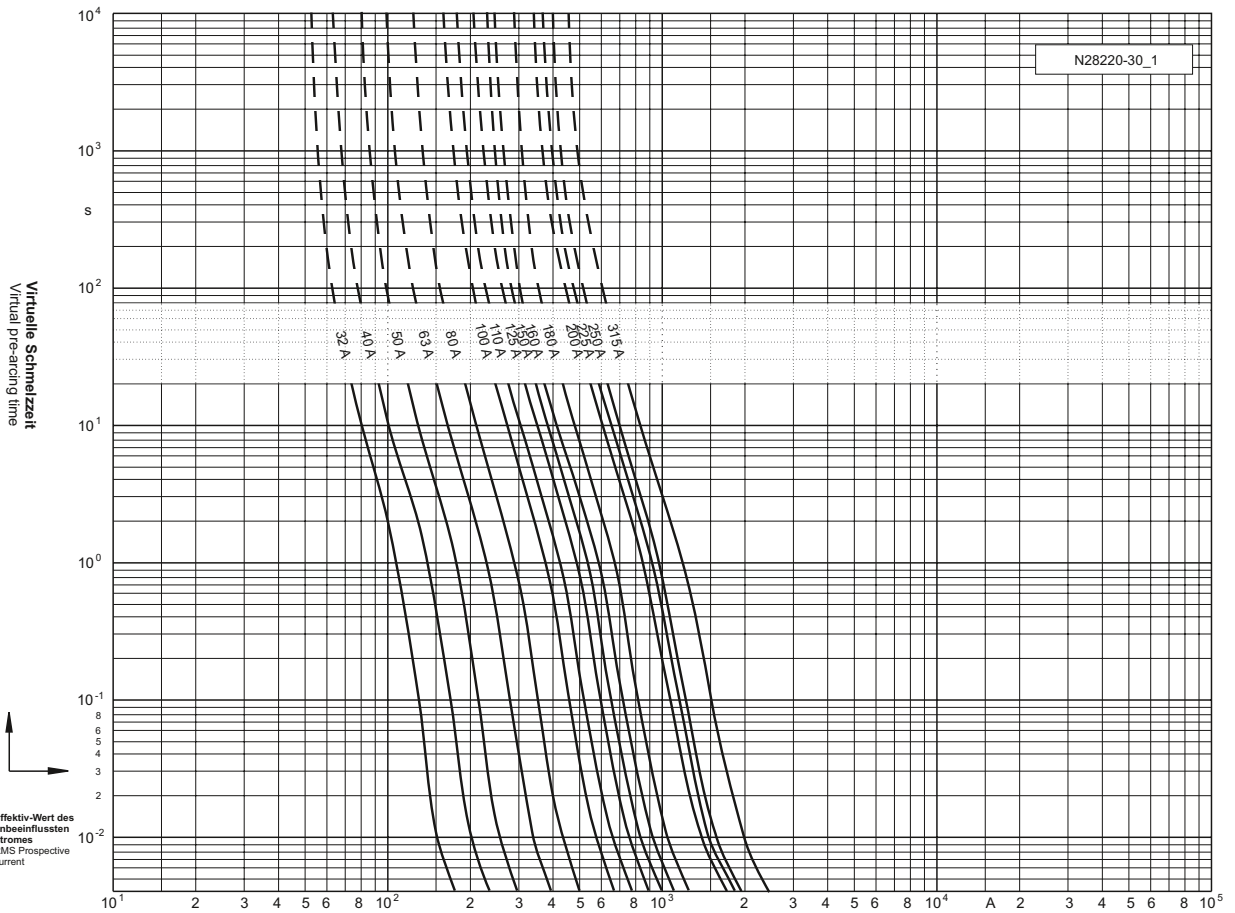
Sicherungshalter siehe Seite 40
Fuse-holder see page 40

| Applikationskoeffizienten / Application coefficients (Weiterführende Informationen siehe Seite 13 / for more information see page 13) | | | | |
|---|-----|---------|-----|-----|
| a | A2 | B1 max. | B2 | Cf3 |
| 130 | 0,6 | 1,25 | 0,6 | 0,8 |

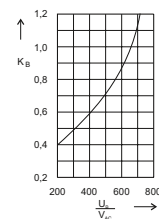
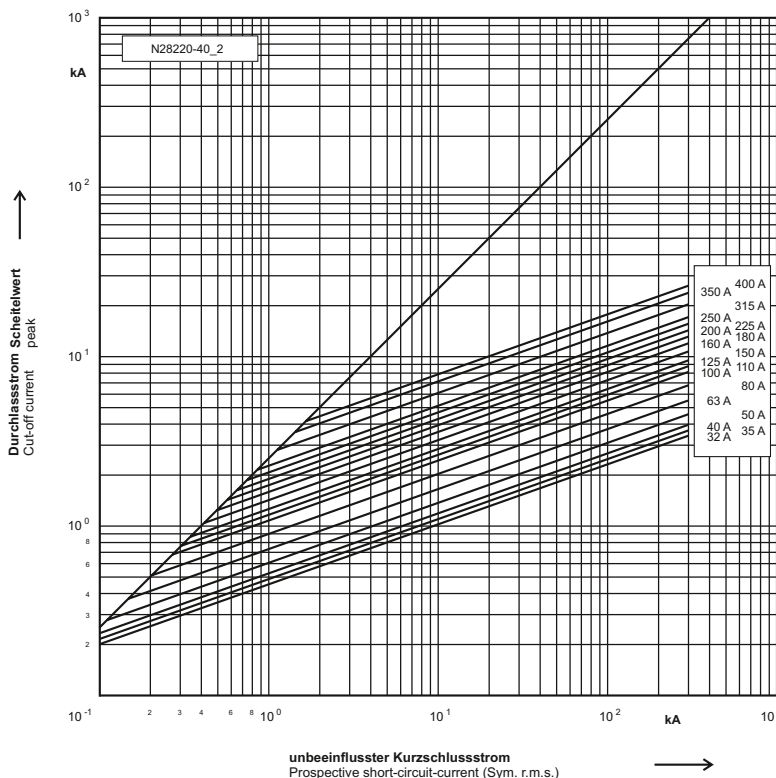
690/700 V NH 000 DIN 80

RU usE180276

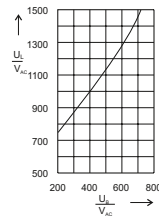
Zeit/Strom-Kennlinien
Time-current characteristics



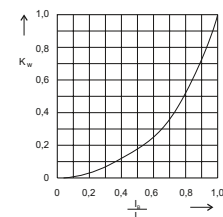
Durchlass-Strom
Cut-off current



Umrechnungsfaktor für den Ausschalt i^2t -Wert
Reduction factor for total i^2t -value



Schaltspannungsdiagramm
Arc Voltage-Diagram



Umrechnungsfaktor der Leistungsabgabe
Reduction factor for power loss