

ENERGY METERS



 **Lovato**
electric

ENERGY AND AUTOMATION

For efficient management of energy consumption |

In a global scenario in which energy must be monitored and managed efficiently, LOVATO Electric presents its updated series of energy meters for single and three-phase systems. Compatibility with the EXM... type expansion modules and the availability of a data concentrator allow LOVATO Electric energy meters to connect with the most common communication systems (USB, RS232, RS485, M-BUS and Ethernet).



EXPANDABILITY

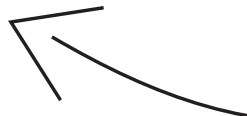
Input/output and communication modules

COMMUNICATION

Modbus via RS232 or RS485, Ethernet or M-BUS

DME

Series



Street lighting



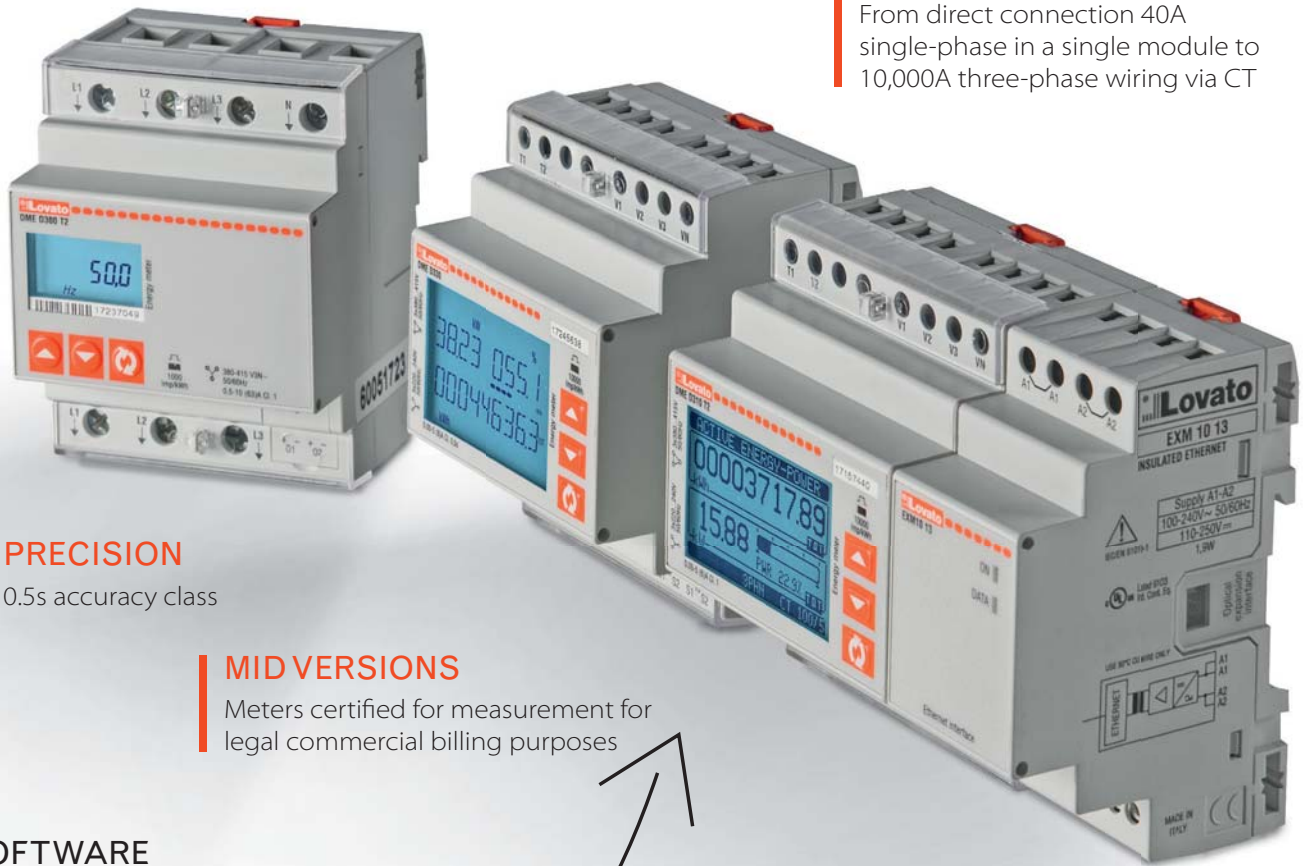
Retail



Industry

COMPLETE RANGE

From direct connection 40A single-phase in a single module to 10,000A three-phase wiring via CT



PRECISION

0.5s accuracy class

MID VERSIONS

Meters certified for measurement for legal commercial billing purposes

SOFTWARE

Monitoring, configuration and remote control for energy management

EASE OF USE

Backlight graphic display



Xpress
Synergy

- total and partial energy meters (resettable)
- expandable versions with memory device for data logger, Ethernet communication and relay outputs for load disconnection
- versions with programmable output for energy pulses or alarm thresholds
- tariff selection input
- 4-quadrant measurements
- MID, RCM and EAC certified versions.

Photovoltaic

220...
240
VAC

> SINGLE-PHASE



- rated supply voltage: 220...240VAC
- operating limit: 187...264VAC
- active energy measurement and accuracy:
 - standard version: class 1 (IEC/EN 62053-21)
 - MID-certified version: class B (EN 50470-3)
- reactive energy measurement and accuracy: class 2 (IEC/EN 62053-23)
- flashing metrological LED for energy consumption indication
- terminal covers that can be sealed included
- protection rating: IP40 on front, IP20 on terminals
- multi-measurement.



SINGLE-PHASE WITH DIRECT WIRING		DME D100 T1	DME D110 T1	DME D115 T1	DME D120 T1	DME D121	DME D122	DME D130 LM
Maximum current		40A	40A	40A	63A	63A	63A	63A
Display	Vertical, not backlight	■	■					
	Horizontal, backlight			■	■	■	■	■
Measurement	kWh	■						
	kWh, kW with average and max. demand			■				
	kWh, kvarh, kW with average and max. demand, kvar, V, I, Hz, PF, total and partial hour counter		■		■	■	■	■
Interface	Pulse output	■						
	Programmable output (pulses/thresholds)		■	■	■			
	Built-in Modbus RTU (RS485)					■		
	Built-in M-BUS						■	
MID version availability		■	■		■	■	■	
Load management								■
Compatibility with Synergy, Synergy Cloud and Xpress software						■		

380...
415
VAC

> THREE-PHASE



- rated supply voltage: 380...415VAC (L-L)
- operating limit: 323...456VAC (L-L)
- active energy measurement and accuracy:
 - standard version, direct connection: class 1 (IEC/EN 62053-21)
 - standard version, connection via CT: class 0.5s (IEC/EN 62053-22)
 - MID-certified version: class B (EN 50470-3)
- reactive energy measurement and accuracy: class 2 (IEC/EN 62053-23)
- flashing metrological LED for energy consumption indication
- terminal covers that can be sealed included
- protection rating: IP40 on front, IP20 on terminals
- multi-measurement
- tariff selection input.

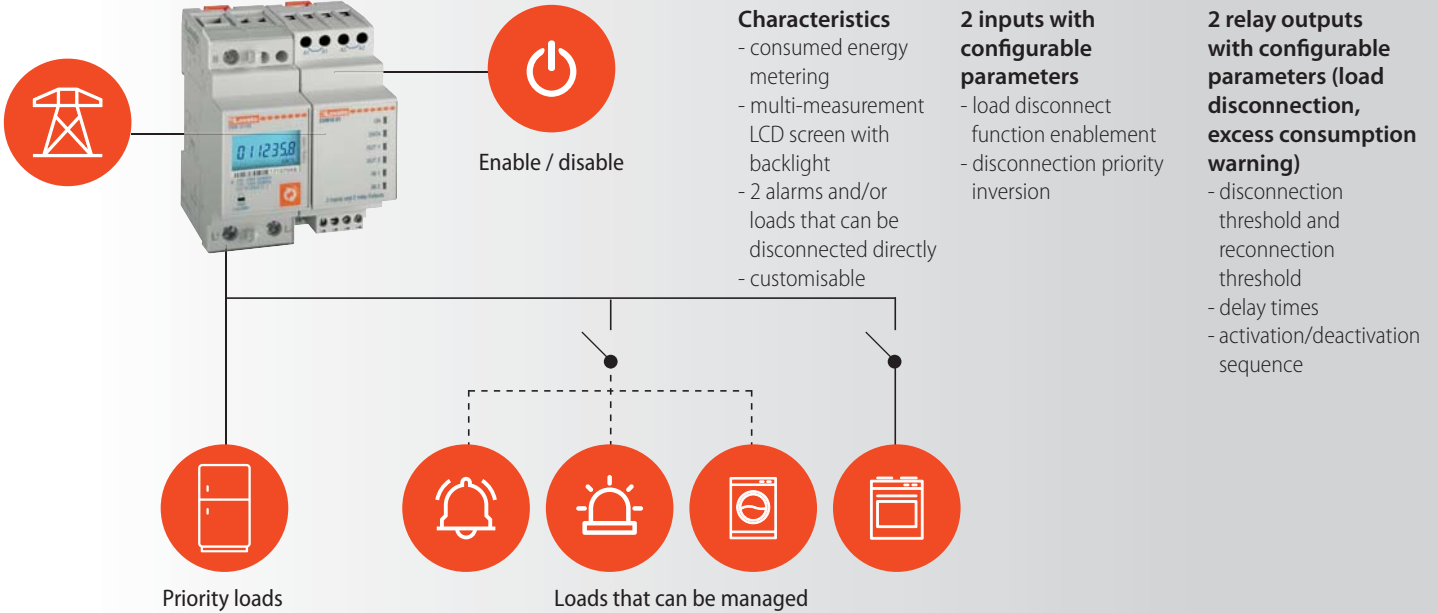


THREE-PHASE		DME D300 T2	DME D301	DME D302	DME D305 T2	DME D330	DME D332	DME D310 T2
Maximum current		80A	80A	80A	CT /5 or CT /1	CT /5 or CT /1	CT /5 or CT /1	CT /5
Connection type	Direct	■	■	■				
	Via CT				■	■	■	■
Interface	Programmable output (pulses/thresholds)	■			■			■
	Built-in Modbus RTU (RS485)		■			■		
	Built-in M-BUS			■			■	
Expandability	Communication (RS485, Ethernet, USB)							■
	Relay outputs for load disconnection							■
	Data memory (data logger)							■
MID version availability*		■	■	■	■	■	■	■
Compatibility with Synergy, Synergy Cloud and Xpress software			■			■		■

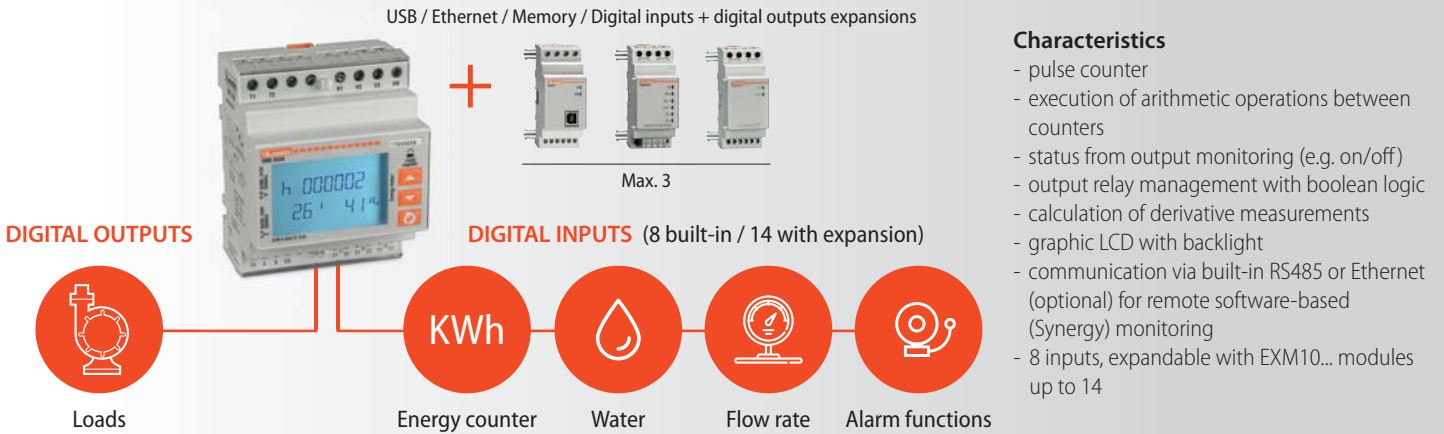
* UTF-certified versions are available on request

APPLICATION EXAMPLES

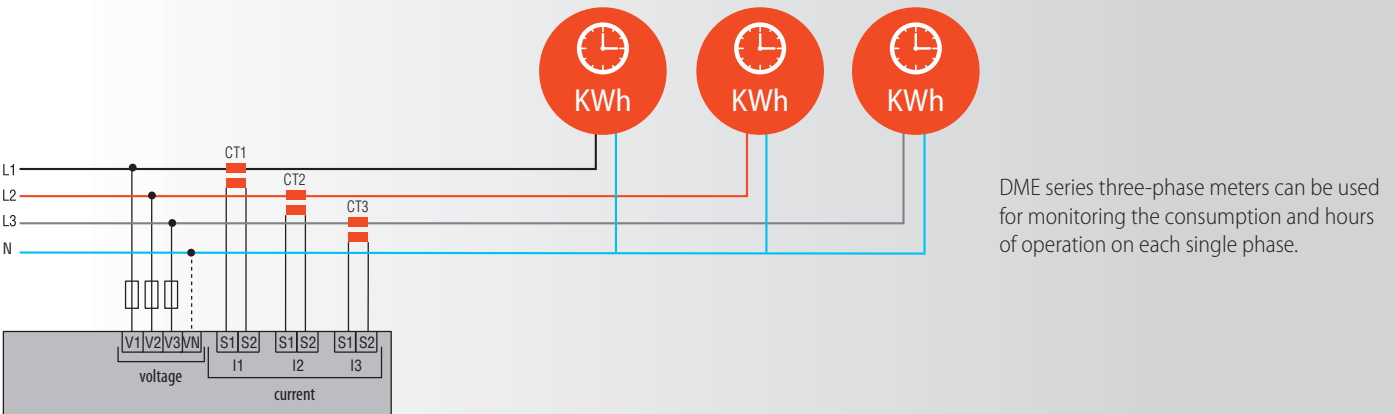
DME D130 LM multi-measurement for load management: avoid disconnection due to excess consumption



DME CD: smart expandable data concentrator with built-in RS485



THREE-PHASE VERSIONS: monitoring energies of each phase with dedicated hour counters



ORDER CODES

Single-phase

Order code	Maximum current	Size	Accuracy class	Interface
DME D100 T1	40A	1U	1	1 pulse output
DME D110 T1	40A	1U	1	1 programmable output
DME D115 T1	40A	2U	1	1 programmable output
DME D120 T1	63A	2U	1	1 programmable output
DME D121	63A	2U	1	RS485
DME D122	63A	2U	1	M-BUS
DME D130 LM	63A	4U	1	Relay outputs

MID versions

DME D100 T1MID	40A	1U	B	1 pulse output
DME D110 T1MID	40A	1U	B	1 programmable output
DME D120 T1MID	63A	2U	B	1 programmable output
DME D121 MID*	63A	2U	B	RS485
DME D122 MID*	63A	2U	B	M-BUS

* Certification in progress

Three-phase

Order code	Maximum current	Size	Accuracy class	Interface
DME D300 T2	80A	4U	1*	2 programmable outputs
DME D301	80A	4U	1*	RS485
DME D302	80A	4U	1*	M-BUS
DME D305 T2	CT /5 or /1	4U	0.5s	2 programmable outputs
DME D330	CT /5 or /1	4U	0.5s	RS485
DME D332	CT /5 or /1	4U	0.5s	M-BUS
DME D310 T2	CT /5	4U	0.5s	2 programmable outputs

MID versions

DME D300 T2MID	80A	4U	B	2 programmable outputs
DME D301 MID	80A	4U	B	RS485
DME D302 MID	80A	4U	B	M-BUS
DME D305 T2MID	CT /5 or /1	4U	B	2 programmable outputs
DME D330 MID	CT /5 or /1	4U	B	RS485
DME D332 MID	CT /5 or /1	4U	B	M-BUS
DME D310 T2MID	CT /5	4U	B	2 programmable outputs

* Class 1 according to IEC/EN 62053-21, accuracy measured in the 0.75A-80A range: **0.5%**

Certifications



UTF-certified versions are available on request

Data concentrator

Order code	Size	Interface	Input number	Expandability
DME CD	4U	RS485	8 built-in	max. 3 EXM expansions

Expansions for DME D310 T2 and DME CD

Order code	Description
EXM10 00	2 digital inputs and 2 static outputs, opto-isolated
EXM10 01	2 opto-isolated digital inputs and 2 relay outputs 5A 250VAC
EXM10 02	4 opto-isolated digital inputs and 2 relay outputs 5A 250VAC
EXM10 10	Opto-isolated USB interface
EXM10 11	Opto-isolated RS232 interface
EXM10 12	Opto-isolated RS485 interface
EXM10 13	Ethernet interface with Web server function
EXM10 20	Opto-isolated RS485 interface and 2 relay outputs 5A 250VAC
EXM10 30	Data storage, RTC with backup battery for data logging



EXM10 00 | EXM10 01
EXM10 02
Digital inputs and outputs



EXM10 10 | EXM10 11
EXM10 12 | EXM10 20
USB, RS232, RS485
communication



EXM10 13
Ethernet communication



EXM1030
Data logger

Accessories



DM
Current transformers
50A to 4000A



EXC M3G 01
2G/3G modem



EXC CON 01
RS485-Ethernet converter

SOFTWARE



Software for energy monitoring and efficiency.

Read the energy efficiency brochure to find out more!
Scan this QR code with your smartphone.



Configuration and remote control software.



Energy
Management



DMG



Visit EM.LOVATOELECTRIC.COM



ENERGY AND AUTOMATION

www.LovatoElectric.com

LOVATO ELECTRIC S.P. A.

Via Don E. Mazza, 12
24020 Gorle (Bergamo), Italy

tel. +39 035 4282111
info@LovatoElectric.com



Follow us on

The products described in this document are subject to updates or modifications at any time. The descriptions, technical and functional information, illustrations and instructions in the leaflet are to be considered as purely illustrative, and consequently have no contractual relevance. Remember also that the products themselves must be used by qualified personnel, in compliance with current plant engineering and installation standards, in order to avoid injury to persons or damage to property.