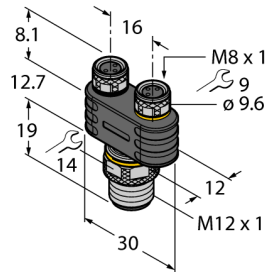
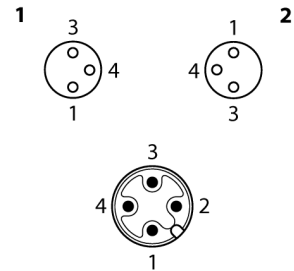


**2-port Junction Systems**  
**Y-Splitter without Cable, Male M12 x 1 - 2 x Female M8 x 1**  
**YB2-FSM4.4-2PKG3M**

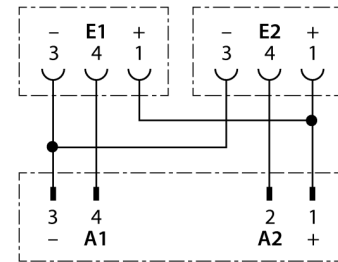


- Male M12, 4-pin
- Female M8, 3-pin
- RoHS conform
- Protection class IP67

**Pin Assignment**



**Circuit Diagram**



<b>Type designation</b>	YB2-FSM4.4-2PKG3M
<b>Ident no.</b>	6930549
<b>Splitter</b>	Male Connector, 2 x Female Connector, M12x1, M8x1 - M12x1
<b>Number of pins</b>	4/3
<b>Contacts</b>	Brass, CuZn, Gold-plated
<b>Contact carriers</b>	Plastic, TPU, Black
<b>Connector body</b>	Plastic, TPU, Black
<b>Coupling nut/screw</b>	Brass, CuZn, Nickel-plated
<b>Seal</b>	Plastic, FKM/FPM
<b>Protection class</b>	IP67, A + B side screwed together
<b>Mechanical lifespan</b>	> 100 Mating cycles
<b>Pollution degree</b>	3/2
<b>Tightening torque</b>	0.5 ... 0.6 Nm (observe max. torque of mating connector!)
<b>Electrical properties at +20 °C</b>	
<b>Current</b>	4 A
<b>Rated voltage</b>	30 V
<b>Forward resistance</b>	≤ 5 mΩ
<b>Insulation resistance</b>	≥ 10 <sup>8</sup> Ω
<b>Ambient temperature</b>	
<b>In motion</b>	-30...+80°C

**2-port Junction Systems**  
**Y-Splitter without Cable, Male M12 x 1 - 2 x Female M8 x 1**  
**YB2-FSM4.4-2PKG3M**

**TURCK**

Industrial  
Automation

**Accessories**

Type code	Ident no.	Description	
TORQUE-WRENCH-SET-AS	6936170	Torque wrench set; handles with adjustable torque 0.4-1.0 Nm, torque wrench for M8 (SW9), fork wrench for M12 (SW 14)	