

Catalogue

Spare parts and accessories

Danfoss Commercial Compressors
for hermetic reciprocating and scroll
compressors (AC/HP & REF)



Introduction	4	Spare parts and accessory for MLZ / MLM / LLZ 18	
Packaging types.....	4	Solder sleeve adapter sets	18
Single pack	4	Rotolock nuts and sleeves kit	18
Mutipack	4	Magnetic discharge non return valve	18
Industry pack	4	Run capacitors for PSR wiring.....	18
Ordering quantities	4	Start capacitors for CSR wiring.....	19
Spare parts and accessory for all compressors ... 5		Starting relays for CSR wiring.....	19
Rotolock adapters	6	IP54 upgrade kits.....	19
Gaskets and gasket sets.....	6	Mounting kits	19
Solder sleeves & Rotolock connector.....	6	Acoustic hoods.....	20
Rotolock nuts.....	6	Terminal box and accessories	20
Rotolock service valves and valve sets (without gasket).....	7	Manifolding service kit.....	20
Surface sump heater.....	7	Spare parts and accessory for VSH / VZH..... 21	
Crankcase heater	8	Solder sleeve adapter sets	21
PTC heater.....	8	Discharge thermostats and sensors.....	21
Discharge thermostat kit.....	8	Coil.....	21
Lubricants / oils.....	9	Valve Body	21
Miscellaneous.....	9	Acoustic hoods	22
Spare parts and accessory for SH / DSH / SM / SY / SZ / WSH / PSH..... 10		Mounting kits	22
Solder sleeve adapter sets	10	Terminal boxes and accessories.....	22
3 phase soft start equipment	10	Oil level switch	22
Motor protection modules and transformers	10	LCP's	23
Acoustic hoods	11	Fans	23
Mounting kits	11	Control card	23
Terminal boxes and accessories.....	12	Accessory bags.....	23
Suction header restrictors for tandem	12	Relays card	23
Suction washers for tandem	12	Decoupling plate	23
Tandem kits including suction header restrictor and suction and discharge tees.....	13	Spare parts and accessory for MT / MTZ / NTZ .. 24	
Tandem kits including suction washer, rigid spacers and oil connection sleeves	13	Single phase PSC starting kits	24
tandem solid kits	13	Single phase CSR starting kits	24
Trio kits	14	Single phase CSR starting kits, prewired box.....	24
trio solid kits.....	14	3 phase soft start equipment	25
Quadro kits	14	Relays and capacitors	25
Oil equalisation adapters	14	Acoustic hoods	25
Sensors & cables	15	Mounting kits (Grommets, sleeves, bolts, washers, Ebox cover, Solder sleeves and gaskets).....	25
Spare parts and accessory for H / HHP..... 16		Terminal boxes, covers & T-block connectors	25
Solder sleeve adapter sets	16	Tandem kits.....	25
Run capacitors for PSR wiring.....	16	Spare parts and accessory for VTZ..... 26	
Start capacitors for CSR wiring.....	16	Acoustic hoods	26
Starting relays for CSR wiring.....	17	Mounting kits	26
Mounting kits	17	Terminal boxes, covers & T-block connectors	26
Acoustic hoods.....	17	LCP's	26
IP54 upgrade kit.....	17	Control card	27
Terminal box and accessories	17	Relays card	27
		Converters.....	27
		Alpha Numeric	28

Packaging types

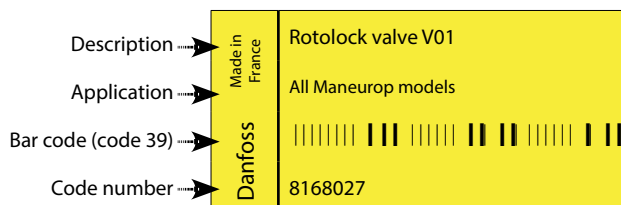
Accessories and spare parts from Danfoss Commercial Compressors (DCC) are

distributed as Single packs, Multipacks and Industry packs.

Single pack

One part (or not set of parts) in a cardboard box or blister.

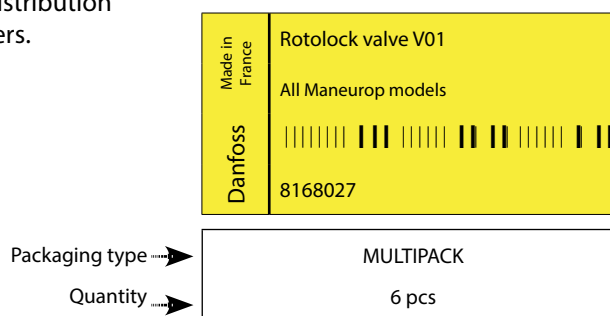
Code number 77xxxxx or 81xxxxx or 120Zxxxx or 118Uxxxx



Multipack

A quantity of Single packs packed together. Code number 77xxxxx or 81xxxxx or 120Zxxxx or 118Uxxxx. Mainly dedicated to Danfoss Distribution Centers and wholesale customers.

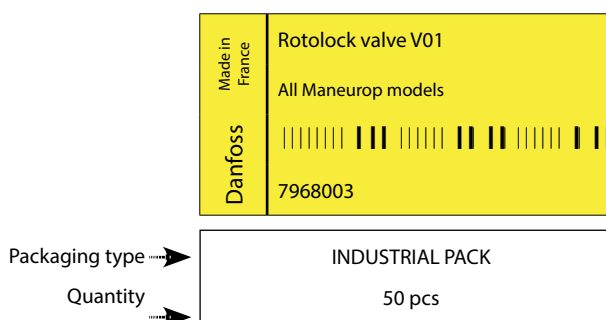
Danfoss Distribution centers or wholesalers can break up a multipack into Single packs, each having the appropriate label.



Industry pack

A quantity of identically product in bulk packaging. Code number 79xxxxx or 120Zxxxx or 118Uxxxx.

Mainly dedicated to OEM customers. Industry packs can not be broken up into Single packs.



Ordering quantities

The pack sizes as listed in this catalogue are relevant for customers ordering directly from the DCC factory. DCC strictly applies the indicated pack sizes for multipacks and industry packs.

E.g; a multipack with a pack size of 6 can be ordered from the DCC factory only in quantities of 6, 12, 18...



SH / DSH / SM / SY / SZ & WSH ranges



PSH range



H & HHP ranges



MLZ & MLM range



LLZ range



VSH & VZH ranges



MT / MTZ & NTZ ranges



VTZ range

SH/SM/SY/SZ/WSH/PSH All compressors

H/HHP

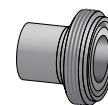
MLZ/MLM/LLZ

VSH/VZH

MT/MTZ/NTZ

VTZ

ALPHA NUMERIC

Rotolock adapters


Code n°	Description	Application	Packaging	Pack size
120Z0365	Rotolock adapter (1" Rotolock, 1/2" ODF)	Models with 1/2" ODF on Danfoss scroll models	Multipack	10
120Z0366	Rotolock adapter (1"1/4 Rotolock, 3/4" ODF)	Models with 3/4" ODF on Danfoss scroll models	Multipack	10
120Z0367	Rotolock adapter (1"1/4 Rotolock, 7/8" ODF)	Models with 7/8" ODF on Danfoss scroll models	Multipack	10
120Z0364	Rotolock adapter (1"3/4 Rotolock, 1"1/8 ODF)	Models with 1"1/8 ODF on Danfoss scroll models	Multipack	10
120Z0431	Rotolock adapter (1"3/4 Rotolock, 1"3/8 ODF)	Models with 1"3/8 ODF on Danfoss scroll models	Multipack	10
120Z0432	Rotolock adapter (2"1/4 Rotolock, 1"5/8 ODF)	Models with 1"5/8 ODF on Danfoss scroll models	Multipack	10

Gaskets and gasket sets


Code n°	Description	Application	Packaging	Pack size
8156130	Gasket, G01, 1"	Models with 1" rotolock connection on all models	Multipack	10
7956001	Gasket, G01, 1"	Models with 1" rotolock connection on all models	Industry pack	50
8156131	Gasket, G09, 1"1/4	Models with 1"1/4 rotolock connection on all models	Multipack	10
7956002	Gasket, G09, 1"1/4	Models with 1"1/4 rotolock connection on all models	Industry pack	50
8156132	Gasket, G07, 1"3/4	Models with 1"3/4 rotolock connection on all models	Multipack	10
7956003	Gasket, G07, 1"3/4	Models with 1"3/4 rotolock connection on all models	Industry pack	50
8156133	Gasket, G08, 2"1/4	Models with 2"1/4 rotolock connection on Danfoss scroll models	Multipack	10
7956004	Gasket, G08, 2"1/4	Models with 2"1/4 rotolock connection on Danfoss scroll models	Industry pack	50
8156009	Gasket set, 1", 1"1/4, 1"3/4, OSG gaskets black & white	All 1-2-4 cylinder models	Multipack	10
8156013	Gasket set, 1"1/4, 1"3/4, 2"1/4, OSG gaskets black & white	All rotolock models on Danfoss scroll models	Multipack	10

Solder sleeves & Rotolock connector


Code n°	Description	Application	Packaging	Pack size
8153010	Solder sleeve, P01, (1" Rotolock, 3/8" ODF)	Models with 1" rotolock connection	Multipack	10
8153007	Solder sleeve, P06, (1" Rotolock, 1/2" ODF)	Models with 1" rotolock connection	Multipack	10
8153008	Solder sleeve, P04, (1"1/4 Rotolock, 3/4" ODF)	Models with 1"1/4 rotolock connection	Multipack	10
8153012	Rotolock connector, P05, (1"1/4 Rotolock, 7/8" ODS)	Models with 1"1/4 rotolock connection	Multipack	10
8153011	Solder sleeve, P09, (1"1/4 Rotolock, 5/8" ODF)	Models with 1"1/4 rotolock connection	Multipack	10
8153004	Solder sleeve, P02, (1"3/4 Rotolock, 1"1/8 ODF)	Models with 1"3/4 rotolock connection	Multipack	10
8153013	Solder sleeve, P07, (1"3/4 Rotolock, 7/8" ODF)	Models with 1"3/4 rotolock connection	Multipack	10
8153003	Solder sleeve, P10, (1"3/4 Rotolock, 1"3/8 ODF)	Models with 1"3/4 rotolock connection	Multipack	10
8153006	Solder sleeve, P03, (2"1/4 Rotolock, 1"5/8 ODF)	Models with 2"1/4 rotolock connection	Multipack	10
8153005	Solder sleeve, P08, (2"1/4 Rotolock, 1"3/8 ODF)	Models with 2"1/4 rotolock connection	Multipack	10

Rotolock nuts


Code n°	Description	Application	Packaging	Pack size
8153122	Rotolock nut, 1"	Models with 1" rotolock connection	Multipack	10
8153123	Rotolock nut, 1"1/4	Models with 1"1/4 rotolock connection	Multipack	10
8153124	Rotolock nut, 1"3/4	Models with 1"3/4 rotolock connection	Multipack	10
8153126	Rotolock nut, 2"1/4	Models with 2"1/4 rotolock connection	Multipack	10

Rotolock service valves and valve sets (without gasket)



Code n°	Description	Application	Packaging	Pack size
8168027	Rotolock valve, V01, (1" Rotolock, 3/8" ODF)	Models with 1" rotolock connection	Multipack	6
8168031	Rotolock valve, V06, (1" Rotolock, 1/2" ODF)	Models with 1" rotolock connection	Multipack	6
7968006	Rotolock valve, V04, (1"1/4 Rotolock, 3/4" ODF)	Models with 1"1/4 rotolock connection	Industry pack	42
8168029	Rotolock valve, V04, (1"1/4 Rotolock, 3/4" ODF)	Models with 1"1/4 rotolock connection	Multipack	6
7968007	Rotolock valve, V05, (1"1/4 Rotolock, 7/8" ODF)	Models with 1"1/4 rotolock connection	Industry pack	36
8168030	Rotolock valve, V05, (1"1/4 Rotolock, 7/8" ODF)	Models with 1"1/4 rotolock connection	Multipack	6
7968005	Rotolock valve, V09, (1"1/4 Rotolock, 5/8" ODF)	Models with 1"1/4 rotolock connection	Industry pack	50
8168033	Rotolock valve, V09, (1"1/4 Rotolock, 5/8" ODF)	Models with 1"1/4 rotolock connection	Multipack	6
7968009	Rotolock valve, V02, (1"3/4 Rotolock, 1"1/8 ODF)	Models with 1"3/4 rotolock connection	Industry pack	24
8168028	Rotolock valve, V02, (1"3/4 Rotolock, 1"1/8 ODF)	Models with 1"3/4 rotolock connection	Multipack	6
7968008	Rotolock valve, V07, (1"3/4 Rotolock, 7/8" ODF)	Models with 1"3/4 rotolock connection	Industry pack	36
8168032	Rotolock valve, V07, (1"3/4 Rotolock, 7/8" ODF)	Models with 1"3/4 rotolock connection	Multipack	6
8168022	Rotolock valve, V10, (1"3/4 Rotolock, 1"3/8 ODF)	Models with 1"3/4 rotolock connection	Single pack	1
8168026	Rotolock valve, V03, (2"1/4 Rotolock, 1"5/8 ODF)	Models with 2"1/4 rotolock connection	Multipack	6
8168025	Rotolock valve, V08, (2"1/4 Rotolock, 1"3/8 ODF)	Models with 2"1/4 rotolock connection	Multipack	6
7703009	Valve set, V02 (1"3/4~1"1/8), V04 (1"1/4~3/4")	SM/SZ084-100.110* to 161* & SH/DSH090-161 & SH/DSH 184 MT(Z)80-160 & NTZ136-271 SH/DSH090 & WSH090 & VSH088 PSH019	Multipack	6
7703008	Valve set, V02(1"3/4~1"1/8), V05(1"1/4~7/8")	H/CJ090.105.120 MLZ/MLM058.066.076	Multipack	6
7703392	Valve set, V10 (1"3/4~1"3/8), V05 (1"1/4~7/8")	SM110.112.120.124.147.148.161 & SZ110.120.148.161 & SH/DSH105.120.140.161.184 (R410A) & WSH105.120.140.161.184 & VSH117 PSH023.026.030.034.039	Multipack	6
7703383	Valve set, V03 (2"1/4~1"5/8), V02 (1"3/4~1"1/8)	SM/SY/SZ175.185.240.300.380 & SH180.240.300.380 & DSH240.295.381(R410A) & VSH170 & PSH051.064.077	Multipack	4
7703010*	Valve set, V08 (2"1/4~1"3/8), V07 (1"3/4~7/8")	SM/SZ175.185	Multipack	6
120Z0547	Valve set, V03 (2"1/4~1"5/8), V10 (1"3/4~1"3/8)	SH/DSH485(R410A)	Multipack	4
7703004	Valve set, V06 (1"~1/2"), V01 (1"~3/8")	MT(Z)18-28 (except 22-1 & 28-1)	Multipack	4
7703006	Valve set, V07 (1"3/4~7/8"), V04 (1"1/4~3/4")	MT(Z)44-72 & NTZ096-108	Multipack	6
7703005	Valve set, V09 (1"1/4~5/8"), V06 (1"~1/2")	MT(Z)32-40 & 22-1 & 28-1 & NTZ048-068	Multipack	4

* diameter restriction

Surface sump heater



Code n°	Description	Application	Packaging	Pack size
120Z0361	Surface sump heater + Bottom insulation, 48W, 24V, CE, UL		Multipack	6
120Z0380	Surface sump heater + Bottom insulation, 48W, 230V, CE, UL		Multipack	6
120Z0381	Surface sump heater + Bottom insulation, 48W, 400V, CE, UL	SM/SZ084-161 excluding SM112.124.147	Multipack	6
120Z0382	Surface sump heater + Bottom insulation, 48W, 460V, CE, UL		Multipack	6
120Z0383	Surface sump heater + Bottom insulation, 48W, 575V, CE, UL		Multipack	6
120Z0388	Surface sump heater, 80W, 24V, CE, UL		Multipack	8
120Z0389	Surface sump heater, 80W, 230V, CE, UL	SM112.124.147 & SH/DSH090-184 & WSH090-184 & DSF090-200	Multipack	8
120Z0390	Surface sump heater, 80W, 400V, CE, UL	PSH019.023.026.030.034.039	Multipack	8
120Z0391	Surface sump heater, 80W, 460V, CE, UL	VSH088.117 & VZH088.117	Multipack	8
120Z0402	Surface sump heater, 80W, 575V, CE, UL		Multipack	8
120Z0667	Surface sump heater, 48W, 24V, CE, UL		Single pack	1
120Z0668	Surface sump heater, 48W, 230V, CE, UL		Single pack	1
120Z0669	Surface sump heater, 48W, 400V, CE, UL	DSH090-184, DSF090-200	Single pack	1
120Z0670	Surface sump heater, 48W, 460V, CE, UL		Single pack	1
120Z0671	Surface sump heater, 48W, 575V, CE, UL		Single pack	1
120Z0360	Surface sump heater + Bottom insulation, 56W, 24V, CE, UL	SM/SZ175.185, SY185, SH180 - 240 to 485 PSH051.064.077	Multipack	6
120Z0376	Surface sump heater + Bottom insulation, 56W, 230V, CE, UL	VSH170 & VZH170	Multipack	6
120Z0377	Surface sump heater + Bottom insulation, 56W, 400V, CE, UL	SM/SZ175.185, SY185, SH180 - 240 to 485	Multipack	6
120Z0378	Surface sump heater + Bottom insulation, 56W, 460V, CE, UL	VSH170 & VZH170	Multipack	6
120Z0379	Surface sump heater + Bottom insulation, 56W, 575V, CE, UL		Multipack	6
120Z0372	Surface sump heater + Bottom insulation, 80W, 230V, CE, UL		Multipack	4
120Z0373	Surface sump heater + Bottom insulation, 80W, 400V, CE, UL	SY/SZ240 to 380	Multipack	4
120Z0375	Surface sump heater + Bottom insulation, 80W, 575V, CE, UL		Multipack	4
120Z0769	Surface sump heater + bottom insulation, 56W, 24V, CE & UL	DSH240-600, DSF270-530	Industry pack	12
120Z0770	Surface sump heater + bottom insulation, 56W, 230V, CE & UL	DSH240-600, DSF270-530	Industry pack	12
120Z0771	Surface sump heater + bottom insulation, 56W, 400V, CE & UL	DSH240-600, DSF270-530	Industry pack	12
120Z0772	Surface sump heater + bottom insulation, 56W, 460V, CE & UL	DSH240-600, DSF270-530	Industry pack	12
120Z0773	Surface sump heater + bottom insulation, 56W, 575V, CE & UL	DSH240-600, DSF270-530	Industry pack	12

Crankcase heater


Code n°	Description	Application	Packaging	Pack size
120Z0055	Belt type crankcase heater, 40W, 230V, CE mark, UL	HRM025-047, HRP025-047, HRH029-050	Multipack	6
120Z0056	Belt type crankcase heater, 40W, 400V, CE mark, UL		Multipack	6
120Z5038	Belt type crankcase heater, 40W, 460V, CE mark, UL	HRM025-047, HRP025-047, HRH029-050	Multipack	6
120Z5039	Belt type crankcase heater, 40W, 575V, CE mark, UL		Multipack	6
120Z0057	Belt type crankcase heater, 50W, 230V, CE mark, UL	HRM048-060, HLM068-081, HRP048-060, HLP068-081,	Multipack	6
120Z0058	Belt type crankcase heater, 50W, 400V, CE mark, UL	HRH041-056, HLH061-068, HLJ072-083	Multipack	6
120Z5040	Belt type crankcase heater, 70W, 240V, CE mark, UL	MLZ/MLM 015-019-021-026	Multipack	6
120Z5041	Belt type crankcase heater, 55/70W, 400/460V, CE mark, UL	LLZ all models VZH028-035-044	Multipack	6
120Z0059	Belt type Crankcase heaters, 65W, 230V, CE mark, UL	HCM094-120, HCP094-120, HCJ091-121, DCJ091-121	Multipack	6
120Z0060	Belt type Crankcase heaters, 65W, 400V, CE mark, UL	MLZ/MLM 030.038.045.058.066.076 LLZ all models	Multipack	6
120Z5012	Belt type crankcase heater, 70W, 460V, CE mark, UL	HCM094-120, HCP094-120	Multipack	4
120Z5013	Belt type crankcase heater, 70W, 575V, CE mark, UL	HCJ091-121, DCJ091-121 MLZ/MLM030.038.045.058.066.076	Multipack	4
120Z5042	Belt type crankcase heater, 70W, 575V, CE mark, UL	MLZ/MLM 015-019-021-026 LLZ all models	Multipack	4
7773106	Belt type crankcase heater, 54W, 230V, CE mark, UL		Multipack	4
7773013	Belt type crankcase heater, 54W, 400V, UL	All recip 1 cyl	Multipack	4
7773109	Belt type crankcase heater, 65W, 110V, CE mark, UL		Multipack	6
7773107	Belt type crankcase heater, 65W, 230V, CE mark, UL		Multipack	6
7973002	Belt type crankcase heater, 65W, 230V, CE mark, UL	SM/SZ084-161 VSH088.117 & VZH088.117	Industry pack	50
7773117	Belt type crankcase heater, 65W, 400V, CE mark, UL	All recip 2 cyl	Multipack	6
120Z0466	Belt type crankcase heater, 65W, 460V, CE mark, UL		Multipack	6
120Z0467	Belt type crankcase heater, 65W, 575V, CE mark, UL		Multipack	6
120Z0039	Belt type crankcase heater, 65W, 400V, CE mark, UL	SM/SZ084-161 VSH088.117 & VZH088.117	Multipack	8
120Z0038	Belt type crankcase heater, 65W, 230V, CE mark, UL	VSH088.117 & VZH088.117	Multipack	8
7773110	Belt type crankcase heater, 75W, 110V, CE mark, UL		Multipack	6
7773108	Belt type crankcase heater, 75W, 230V, CE mark, UL		Multipack	6
7973005	Belt type crankcase heater, 75W, 230V, CE mark, UL	SM/SZ175-185 & SH180 to 485 & DSH240 to 600 VSH170 & VZH170 All recip 4 cyl	Industry pack	50
7773118	Belt type crankcase heater, 75W, 400V, CE mark, UL		Multipack	6
120Z0464	Belt type crankcase heater, 75W, 460V, CE mark, UL		Multipack	6
120Z0465	Belt type crankcase heater, 75W, 575V, CE mark, UL	SM/SZ175-185 & SH180 to 485 & DSH240 to 600 All recip 4 cyl	Multipack	6
7773121	Belt type crankcase heater, 130W, 110V, CE mark, UL		Multipack	4
7773122	Belt type crankcase heater, 130W, 230V, CE mark, UL		Multipack	4
7973007	Belt type crankcase heater, 130W, 230V, CE mark, UL	SY/SZ240-380	Industry pack	50
7773123	Belt type crankcase heater, 130W, 400V, CE mark, UL		Multipack	4

PTC heater


Code n°	Description	Application	Packaging	Pack size
120Z0459	PTC heater 27W	All MTZ/MT/NTZ/VTZ models	Multipack	10
120Z0460	PTC heater 27W	All MTZ/MT/NTZ/VTZ models	Industry pack	50

Discharge thermostat kit


Code n°	Description	Application	Packaging	Pack size
7750009	Discharge thermostat kit	All models (except DSF)	Multipack	10
7973008	Discharge thermostat kit	All models (except DSF)	Industry pack	50

Lubricants / oils


Code n°	Description	Application	Packaging	Pack size
7754001	Mineral oil, 160P, 2 litre can	SM, MT, MLM116	Multipack	8
7754002	Mineral oil, 160P, 5 litre can	SM, MT, MLM116	Multipack	4
120Z0639	POE lubricant, 175PZ, 2.5 litre can	MTZ, NTZ, VTZ	Multipack	4
120Z0638	POE lubricant, 175PZ, 1 litre can	MTZ, NTZ, VTZ	Multipack	12
7754023	POE lubricant, 160SZ, 1 litre can	SZ, SH, DSH, PSH, WSH, VZH088-117-170, VSH088-117-170	Multipack	12
120Z0571	POE lubricant, 160SZ, 2.5 litre can	SZ, SH, DSH, PSH, WSH, VZH088-117-170, VSH088-117-170	Multipack	4
7754121	POE lubricant, 320SZ, 1 litre can	SY	Multipack	12
120Z0572	POE lubricant, 320SZ, 2.5 litre can	SY	Multipack	4
120Z0648	POE lubricant 215PZ (RL46HB), 1 liter can	MLZ evolution index A LLZ evolution index A VLZ028-035-044	Multipack	12
120Z0750	POE lubricant 185sL, 1 liter can	DSF	Multipack	12
120Z5034	PVE lubricant, 320HV (FVC68D), 1 litre can	HRP, HLP, HCP, HRH, HLH, HLJ, HCJ, DCJ MLZ / MLM / LLZ VZH028-035-044-052-065	Single pack	1

Miscellaneous


Code n°	Description	Application	Packaging	Pack size
8154001	Danfoss CC blue spray paint	SM, SY, SZ, SH, DSH VSH088-117-170 & VZH088-117-170 All models	Single pack	1
8156019	Oil sight glass with gaskets (black & white)	SM, SY, SZ, SH, DSH VSH088-117-170 & VZH088-117-170 1-2-4 cylinder VE versions	Multipack	4
8156129	Gasket for oil sight glass (white teflon)	SM, SY, SZ, SH, DSH VSH088-117-170 & VZH088-117-170 1-2-4 cylinder VE versions	Multipack	10
8156145	Gasket for oil sight glass (black chloroprene)	Custom products 1-2-4 cylinder models produced since 2002	Multipack	10


SH / DSH / SM / SY / SZ & WSH ranges

PSH range
Solder sleeve adapter sets


Code n°	Description	Application	Packaging	Pack size
7765005	Solder sleeve adapter set (1"3/4 Rotolock, 1"1/8 ODF), (1"1/4 Rotolock, 3/4" ODF)	SM084.090.100 & SZ084.090.100	Multipack	6
120Z0125	Solder sleeve adapter set (1"3/4 Rotolock, 1"1/8 ODF), (1"1/4 Rotolock, 7/8" ODF)	SH/DSH090 & WSH090 & PSH019	Multipack	8
7765006*	Solder sleeve adapter set (1"3/4 Rotolock, 1"3/8 ODF), (1"1/4 Rotolock, 7/8" ODF)	SM110.112.120.124.147.148.161 & SZ110.120.148.161 & SH/DSH105.120.140.161.184 & WSH105.120.140.161.184 & PSH023.026.030.034.039	Multipack	6
120Z0405	Solder sleeve adapter set (1"3/4 Rotolock, 1"3/8 ODF), (1"1/4 Rotolock, 7/8" ODF)	SM/SY/SZ160.175.185.240.300 & SH180.240.295.300.380 & DSH240.295.381(R410A) & PSH051.064.077	Multipack	8
7765028	Solder sleeve adapter set, (2"1/4 Rotolock, 1"5/8 ODF), (1"3/4 Rotolock, 1"1/8 ODF)	SM/SY/SZ160.175.185.240.300 & SH180.240.295.300.380 & DSH240.295.381(R410A) & PSH051.064.077	Multipack	6
120Z0504	Solder sleeve adapter set, (2"1/4 Rotolock, 1"5/8 ODF), (1"3/4 Rotolock, 1"3/8 ODF)	SH/DSH485(R410A)	Single pack	1

* Diameter restriction

3 phase soft start equipment


Code n°	Description	Application	Packaging	Pack size
7705006	Electronic soft start kit, MCI 15 C	SM/SZ084-110 & SH/DSH090 & WSH090 & PSH019	Single pack	1
7705007	Electronic soft start kit, MCI 25 C	SM/SZ115-185 & SH/DSH105-184 & WSH105-184 & PSH023.026.030.034.039	Single pack	1
037N0401	Electronic soft start kit, MCI 50 CM	SY/SZ240-380 & SH180 to 380 & DSH240 to 381(R410A) & PSH051.064.077	Single pack	1
175G5205	Electronic soft starter MCD 201-055-T6-CVI	SH/DSH485* (R410A)	Single pack	1
175G5510	Electronic softstart kit MCD5-0195B-T5	DSH485 code3	Single pack	1
175G5173	Electronic softstart kit MCD201-075-T4-CV3	DSH600	Single pack	1

* except code 3

Motor protection modules and transformers


Code n°	Description	Application	Packaging	Pack size
120Z0584	Electronic motor protection module, 24 V AC	SM/SZ115-185 & SH180, SH/DSH240-600 (except 485-3) , DSF270-530	Single pack	1
120Z0585	Electronic motor protection module, 115/240 V AC	SY/SZ240-380 & SH/DSH240-600 (except 485 code3), DSF270-530	Single pack	1
120Z0624	Electronic motor protection module, 24V AC	DSH485 code3	Single pack	1
120Z0802	Electronic motor protection module, 110/240V	DSH485 code3	Single pack	1

Acoustic hoods


Code n°	Description	Application	Packaging	Pack size
7755011	Acoustic hood for scroll compressor	SM/SZ084.090.100	Single pack	1
7755010	Acoustic hood for scroll compressor	SM/SZ110.120	Single pack	1
120Z0035	Acoustic hood for scroll compressor	SM112.124.147* & SH/DSH105.120.140*.161* & WSH105.120.140*.161*	Single pack	1
120Z0135	Acoustic hood for scroll compressor	SM147-3 & SH/DSH140-3.SH/DSH161-3 & SH/DSH184 & WSH140-3.WSH161-3 & WSH184	Single pack	1
7755017	Acoustic hood for scroll compressor	SM/SZ148*.161*	Single pack	1
7755007	Acoustic hood for scroll compressor	SM/SZ175.185	Single pack	1
7755016	Acoustic hood for scroll compressor	SY/SZ240.300	Single pack	1
7755022	Acoustic hood for scroll compressor	SY/SZ380	Single pack	1
120Z0034	Acoustic hood for scroll compressor	SH/DSH090 & WSH090	Single pack	1
120Z0022	Acoustic hood for scroll compressor	SH180.240.295.300.380*.485* & DSH240.295.381*.485*	Single pack	1
120Z0579	Acoustic hood for scroll compressor	SH/DSH380-3 & PSH051.064.077	Single pack	1
120Z0353	Bottom insulation for scroll compressor	SH180 & SH/DSH240-485	Single pack	1
120Z0768	Acoustic hood DSF Large scroll	DSF270-530	Single pack	1

* except code 3

Mounting kits


Code n°	Description	Application	Packaging	Pack size
8156138	Mounting kit for 1 scroll compressor. Grommets, sleeves, bolts, washers	SM/SZ084-185 (excluding SM112.124.147) & SH180-240 to 485 & PSH051.064.077 in single installation	Single pack	1
120Z0066	Mounting kit for 1 scroll compressor. Grommets, sleeves, bolts, washers	SM112-124-147 & SH/DSH090-184 & PSH019.023.026.030.034.039 & DSF090-200	Single pack	1
8156147	Mounting kit for 1 scroll compressor. Grommets, sleeves, bolts, washers, rotolock nuts, solder sleeves, gaskets	SM/SZ148-185	Single pack	1
8156144	Mounting kit for 1 scroll compressor. Grommets, sleeves	SY/SZ240-380	Single pack	1
8156007	Mounting kit for 4 cylinder compressor & MS, including 4 grommets, 4 bolts Ebox: 96 x 115 mm; Sleeves 1"1/8 - 3/4"	MS/MSE/MSZ115.125.175.185	Single pack	1
8156003	Mounting kit for 1 scroll tandem, including 4 rubber grommets	SM/SZ350 - 370 Tandem & MS Tandem	Single pack	1
120Z0495	Mounting kit for 1 scroll compressor including 4 triangle rigid spacers, 4 sleeves, 4 bolts, 4 washers	SH180 - 240 to 485 in parallel installation PSH051.064.077	Single pack	1
7777045	Mounting kit for 1 scroll compressor including 4 hexagonal rigid spacers, 4 sleeves, 4 bolts, 4 washers	SH180 - 240 to 485 in parallel installation PSH051.064.077	Single pack	1

Terminal boxes and accessories


Code n°	Description	Application	Packaging	Pack size
8173230	T-block connector 52 x 57 mm, 3 screws H10-32 UNF9.5	SM084.090.100.110.112*.120.124*.147*.148*.161* SZ084.090.100.110.120.148*.161* SH/DSH090.105.120.140*.161*	Multipack	10
8173021	T block connector 60 x 75 mm	SM147-3.148-3.161-3.175.185 & SY240*.300*.380 SZ175.185.240*.300*.380 SH/DSH140-3.161-3.180.184 WSH140-3.161-3.184 & PSH051.064.077	Multipack	10
120Z0774	T block connector 80 x 80 mm	SY240-380, SH180-485 ,DSH240-600 DSF270-530,CH485	Multipack	10
8156135	Service kit for terminal box 96 x 115 mm, including 1 cover, 1 clamp	SM084.090.100.110.112.120.124.147.148*.161* SZ084.090.100.110.120.148*.161* SH/DSH090.105.120.140*.161* WSH090.105.120.140*.161*	Multipack	10
8156139	Terminal box 186 x 198 mm, incl cover	SM/SZ148-3.161-3.175.185	Single pack	1
120Z0458	Terminal box 210 x 190 incl. cover	SH180.240.295.300.380*.485* & DSH240.295.381*.485*, DSF270-530 SY/SZ240.300.380 - SY/SZ185 with module	Single pack	1
120Z0462	Terminal box 210 x 190 incl. cover and module wiring For 258 x 208 terminal box replacement	SH180.240.295.300.380*.485* SY/SZ240.300.380 - SY/SZ185 with module	Single pack	1
120Z0604	Terminal box 210x340mm , incl cover	DSH485 code 3	Single pack	1
120Z0483	Terminal box with 230V OCS	PSH051	Single pack	1
120Z0563	Terminal box with 230V OCS	PSH064	Single pack	1
120Z0565	Terminal box with 230V OCS	PSH077	Single pack	1
120Z0486	OCS connectors	PSH051.064.077	Single pack	1
120Z0689	Control board (OCS)	PSH019 to PSH039	Single pack	1
120Z0698	PSH019 to PSH034 Ebox assembly with OCS	Old version PSH019 to PSH034 field replacement	Single pack	1
120Z0699	PSH039 Ebox assembly with OCS	Old version PSH039 field replacement	Single pack	1
120Z0413	Terminal box cover	SM147-3 & SH/DSH140-3.SH/DSH161-3 & SH/DSH184 & WSH140-3 WSH161-3 & WSH184	Single pack	1
120Z0150	Terminal box cover	SH380-3 & DSH381	Single pack	1
120Z0485	Terminal box cover for OCS version	PSH051.064.077	Single pack	1

* except code 3

Suction header restrictors for tandem


Code n°	Description	Application	Packaging	Pack size
7765012	Suction header restrictor	SM/SZ170.180.200	Single pack	1
7765025	Suction header restrictor	SM/SZ220.242.268.271.281.296.322	Single pack	1
7765013	Suction header restrictor	SM/SZ350.370	Single pack	1
7765027	Suction header restrictor	SZ425.485	Single pack	1

Suction washers for tandem


Code n°	Description	Application	Packaging	Pack size
7777023	Suction washer	SY/SZ540	Single pack	1
7777036	Suction washer	SY/SZ680	Single pack	1

Tandem kits including suction header restrictor and suction and discharge tees


Code n°	Description	Application	Packaging	Pack size
7703251	Restrictor + suction/discharge Tees	SM/SZ170.180.200	Single pack	1
7703384	Restrictor + suction/discharge Tees	SM/SZ220.242	Single pack	1
7703390	Restrictor + suction/discharge Tees	SM/SZ268.271.281.296.322	Single pack	1
7703371	Restrictor + suction/discharge Tees	SM/SZ350.370	Single pack	1

Tandem kits including suction washer, rigid spacers and oil connection sleeves


Code n°	Description	Application	Packaging	Pack size
7777044	Suction washer, rigid spacer, sleeve for oil connect	SH182.212.242.282.322 & SM248	Single pack	1
7777050	Suction washer, rigid spacer, sleeve for oil connect	SM272	Single pack	1
7777054	Suction washer, rigid spacer, sleeve for oil connect	SM294, SH368 & even tandem PSH019.023.026.030.034.039	Single pack	1
7777043	Suction washer, rigid spacer, sleeve for oil connect	SH195.210.230	Single pack	1
7777042	Suction washer, rigid spacer, sleeve for oil connect	SH260.281.301	Single pack	1
7777052	Suction washer, rigid spacer, sleeve for oil connect	SH304.324.345	Single pack	1
7777041	Suction washer, grommets, sleeve for oil connect	SH360.482.590.600.760 & even tandem PSH051.064.077	Single pack	1
7777037	Suction washer, grommets, sleeve for oil connect	SH420.540.680 & SH/DSH535.675 & PSH051.064.077	Single pack	1
7777038	Suction washer, grommets, sleeve for oil connect	SH475.480.560	Single pack	1
7777048	Suction washer, grommets, sleeve for oil connect	SH/DSH620 & PSH051.064.077	Single pack	1
120Z0550	Suction washer, grommets, sleeve for oil connect	SH/DSH865	Single pack	1
120Z0551	Suction washer, grommets, sleeve for oil connect	SH/DSH780	Single pack	1
120Z0569	Suction washer, grommets, sleeve for oil connect	SH/DSH725	Single pack	1
120Z0578	Suction washer, grommets, sleeve for oil connect	SH/DSH970	Single pack	1
120Z0634	Suction washer, rigid spacer, organ pipe, gasket	DSH180E-210E-240E-280E-322E-368E & DSF180E-200E-230E-260E-310E-350E-400E	Single pack	1
120Z0692	Suction washer, rigid spacer, organ pipe, gasket	DSH260U-281U-301U & DSF285U-305U-330U	Single pack	1
120Z0693	Suction washer, rigid spacer, organ pipe, gasket	DSH274U-289U & DSF300U-315U & DSF215U-230U-255U-275U-331U-355U-375U	Single pack	1
120Z0694	Suction washer, rigid spacer, organ pipe, gasket	DSH195U-210U-230U-251U-304U-324U-345U	Single pack	1
120Z0660	Suction washer, rigid spacer, organ pipe, gasket	DSH274	Single pack	1
120Z0709	Suction washer, rigid spacer, grommets, organ pipe, sleeve, gasket	DSH360X-424X-456X-479X-565X & DSF400X-470X-500X-525X	Single pack	1

tandem solid kits

Code n°	Description	Application	Packaging	Pack size
120Z0781	Kit tandem crossplatform, solid	DSH360X-424X-456X-479X-565X	Single pack	1
120Z0785	Kit Tandem, Solid,OEL 1"5/8	DSH485+DSH485 DSF485+DSF485 / DSF530+DSF530	Single pack	1
120Z0786	Kit Tandem, Solid, washer 24mm,OEL 1"5/8	DSH240+DSH485 DSF270+DSF530	Single pack	1
120Z0787	Kit Tandem, Solid, washer 27mm,OEL 1"5/8	DSH295+DSH485 DSF325+DSF530	Single pack	1
120Z0788	Kit Tandem, Solid, washer 30mm,OEL 1"5/8	DSH381+DSH485	Single pack	1
120Z0791	Kit Tandem,Solid, washer 29mm, OEL 1"3/8	DSH240+DSH381 SH240+ SH380	Single pack	1
120Z0792	Kit Tandem, Solid, OEL 1" 3/8	DH240+DSH240 / DSH295+DSH295 /DSH381+DSH381 SH180+SH180 / SH240+SH240 / SH295+SH295 / SH380+SH380 DSF270+DSF270 / DSF325+DSF325	Single pack	1
120Z0795	Kit Tandem,solid,washer 26mm, OEL 1"3/8	SH180+SH295 / SH180+SH380 DSH240+DSH295 / DSH295+DSH381	Single pack	1
120Z0796	Kit Tandem, solid, washer 31mm, OEL 1" 3/8	SH180+SH240 / SH240+SH295 / SH295+SH380 DSF270+DSF325	Single pack	1

Trio kits


Code n°	Description	Application	Packaging	Pack size
7777012	Restrictors, Tees, sleeves, gaskets & oil fittings for trio mounting (copper pipes not included)	3 x SM/SZ185	Single pack	1
7777016	Restrictors, sleeves, gaskets & oil fittings for trio mounting (copper pipes & Tees not included)	3 x SM/SZ185	Single pack	1
7777039	Suction washer, grommets, sleeve for oil connect	SH/DSH550.720.885 (right suction) & PSH051.064.077 trios (right suction)	Single pack	1
7777040	Suction washer, grommets, sleeve for oil connect	SH550 (left suction) & SH/DSH1455 (left and right suction) & PSH051.064.077 trios (left suction)	Single pack	1
7777049	Suction washer, grommets, sleeve for oil connect	SH1140 (right suction)	Single pack	1
120Z0673	Suction washer, grommets, sleeve for oil connect	DSH720.885 (left suction)	Single pack	1
120Z0688	Suction washer, grommets, sleeve for oil connect	DSH1140 (right suction)	Single pack	1
120Z0686	Suction washer, grommets, sleeve for oil connect	DSH1140 (left suction)	Single pack	1
7777063	Suction washer, grommets, sleeve for oil connect	DSH1245.1350	Single pack	1
120Z0714	Organ pipe, sleeves, rigid spacer, gaskets, rubber grommet	DSH552T	Single pack	1

trio solid kits

Code n°	Description	Application	Packaging	Pack size
120Z0782	Kit Trio,solid,washer 31mm, OEL 1"5/8	3 x DSH381 right suction	Single pack	1
120Z0783	Kit Trio,solid,washer 29/31mm,OEL 1"5/8	3 x DSH381 left suction	Single pack	1
120Z0784	Kit Trio,solid,washer 30mm, OEL 1"5/8	3 x DSH240 left suction / 3 x DSH295 left suction 3 x SH240 left suction / 3 x SH295 left suction 3 x DSF270 left suction / 3 x DSF325 left suction	Single pack	1
120Z0789	Kit Trio,solid,washer 29mm, OEL 1"5/8	DSH381+DSH381+DSH485 / DSH485+DSH485+DSH381	Single pack	1
120Z0790	Kit Trio,solid, OEL 1"5/8	3 x SH380 right suction	Single pack	1
120Z0793	Kit Trio,solid,washer 33mm, OEL 1"5/8	3 x DSH485 3 x SH180 left suction / 3 x SH485 3 x DSF530	Single pack	1
120Z0794	Kit Trio,solid,washer 34,5mm, OEL 1"5/8	3 x DSH240 right suction / 3 x DSH295 right suction 3 x SH180 right suction / 3 x SH240 right suction / 3 x SH295 right suction 3 x DSF270 right suction / 3 x DSF325 right suction	Single pack	1

Quadro kits


Code n°	Description	Application	Packaging	Pack size
7777011	Restrictors, Tees, sleeves, gaskets & oil fittings for quadro mounting (copper pipes not included)	4 x SM/SZ185	Single pack	1
7777017	Restrictors, sleeves, gaskets & oil fittings for quadro mounting (copper pipes & Tees not included)	4 x SM/SZ185	Single pack	1

Oil equalisation adapters


Code n°	Description	Application	Packaging	Pack size
120Z0164	Oil equalisation adapter. To connect 7/8" tube on 22 mm oil sight glass connection. Includes 1 adapter 22 mm to 7/8", 2 gaskets.	SM, SY, SZ, SH, DSH	Single pack	1
120Z0165	Oil equalisation adapter. To connect 1/2" tube on 22 mm oil sight glass connection. Includes 1 adapter 22 mm to 1/2", 2 gaskets.	SM, SY, SZ, SH, DSH	Single pack	1
7773112	Oil equalisation adapter kit for trio mounting. Includes oil fittings, gaskets & adapters (copper pipes not included)	3 x SM/SZ160 or 3 x SM/SZ185 4 x SM/SZ160 or 4 x SM/SZ185	Single pack	1
120Z0430	Oil fittings & adapters for quadro mounting (copper pipes not included)	4 x SM/SZ185	Single pack	1

Sensors & cables


Code n°	Description	Application	Packaging	Pack size
120Z0534	Discharge temperature sensor PT100	PSH019.023.026.030.034.039	Single pack	1
060G5707	HP sensor including plug	PSH models	Single pack	1
060G0090 060G0008	LP sensor including plug	PSH models	Single pack	1
120Z0482	DGT sensor with cable	PSH051.064.077	Single pack	1
061L4223	Liquid injections valve coil with cable	PSH051.064.077	Single pack	1
120Z0487	Liquid injection valve body	PSH051.064.077	Single pack	1
120Z0478	Can Bus cable with cable glands	PSH051.064.077 tandem	Single pack	1
120Z0479	Can Bus cable with cable glands	PSH051.064.077 trio	Single pack	1


H ranges
Solder sleeve adapter sets


Code n°	Description	Application	Packaging	Pack size
120Z0126	Solder sleeve adapter set (1"1/4 Rotolock, 3/4" ODF), (1" Rotolock, 1/2" ODF)	HRM032-042, HRP034-042, HRH029-038	Multipack	6
120Z0127	Solder sleeve adapter set (1"1/4 Rotolock, 7/8" ODF), (1" Rotolock, 1/2" ODF)	HRM045-060, HRP045-060, HLM068-075, HLP068-075, HRH040-056, HLH061-068, HLJ072-083	Multipack	6
120Z0128	Solder sleeve adapter set (1"1/4 Rotolock, 7/8" ODF), (1"1/4 Rotolock, 3/4" ODF)	HLM078-81, HLP078-081	Multipack	6
120Z0129	Solder sleeve adapter set (1"3/4 Rotolock, 1"1/8 ODF), (1"1/4 Rotolock, 7/8" ODF)	HCM094-120, HCP094-120, HCJ091-121, DCJ091-121	Multipack	6

Run capacitors for PSR wiring


Code n°	Description	Application	Packaging	Pack size
120Z0052	PSC wiring Run Capacitor 80 µF,	60Hz, Motor Code 1 : HLM068-081/HLP068-081/HRH054-HLJ083	Multipack	10
120Z0051	PSC wiring Run Capacitor 70 µF,	"50Hz, Motor Code 5: HRM025-042/HRP025-042/HRH029-036 60Hz, Motor Code 1 : HRM051-054/HRP051/HRH041-HRH051"	Multipack	10
120Z0050	PSC wiring Run Capacitor 60 µF,	"50Hz, Motor Code 5: HRM045-047/HRP045-047/HRH038-040 60Hz, Motor Code 1 : HRM040-048/HRH038-HRH040"	Multipack	10
8173234	PSC wiring Run Capacitor 55 µF,	"50Hz, Motor Code 5: HRM054-HLM081/HRP054-HLP081/HRH051-HLJ083 60Hz, Motor Code 1 : HRM058-060/HRH036"	Multipack	10
8173233	PSC wiring Run Capacitor 50 µF,	"50Hz, Motor Code 5: HRM051/HRP051 60Hz, Motor Code 1 : HRH032-034"		
8173232	PSC wiring Run Capacitor 45 µF,	60Hz, Motor Code 1 : HRM025-034/HRH031		
8173231	PSC wiring Run Capacitor 40 µF,		Multipack	10

Start capacitors for CSR wiring


Code n°	Description	Application	Packaging	Pack size
120Z0399	CSR wiring Start Capacitor 145-175 µF,	"50Hz, Motor Code 5: HRM025-047/HRP025-047/HRH029-040 60Hz, Motor Code 1 : HRM025-034/HRH031"	Multipack	10
120Z0400	CSR wiring Start Capacitor 161-193 µF,	"50Hz, Motor Code 5: HRM051-054/HRP051-054 60Hz, Motor Code 1 : HRM048-054/HRP051/HRH041-HRH051"	Multipack	10
8173001	CSR wiring Start Capacitor 88-108 µF,	"50Hz, Motor Code 5: HRM058-HLM081/HRP058-HLP081/HRH051-HLJ083 60Hz, Motor Code 1 : HRM038-047/HRM058-060/HRH032-40"	Multipack	10

Starting relays for CSR wiring



Code n°	Description	Application	Packaging	Pack size
120Z0393	CSR wiring Starting Relay, motor voltage code 5 - 220-240V / 1 / 50Hz	"HRM/P032-034-038-040-042- 045-047 HRH031-032-036-038-040	Multipack	10
120Z0394	CSR wiring Starting Relay, motor voltage code 5 - 220-240V / 1 / 50Hz	HRM/P051-054	Multipack	10
120Z0395	CSR wiring Starting Relay, motor voltage code 5 - 220-240V / 1 / 50Hz	HRM/P058-060 HLM/P068- 072-075-081 HRH051-054-056 HLH068 HLJ072-083	Multipack	10
120Z0396	CSR wiring Starting Relay, motor voltage code 1 -208-230V / 1 / 60Hz	HRM/P032-034 HRH031	Multipack	10
120Z0397	CSR wiring Starting Relay, motor voltage code 1 -208-230V / 1 / 60Hz	HRM/P038-040-042- 045-047-048-051-054-058U-060U HLM/068- 072-075-081 HRH032-034-038-040-041-044-048-049-050-051--054-056,HLH068,HLJ072-083	Multipack	10
120Z038	CSR wiring Starting Relay, motor voltage code 1 -208-230V / 1 / 60Hz	HRM058T1-060T1	Multipack	10

Mounting kits



Code n°	Description	Application	Packaging	Pack size
120Z5064	Mounting kit for 1 scroll compressor including 4 grommets, 4 sleeves, 4 bolts, 4 washers	HRM, HLM, HCM, HRP, HLP, HCP, HRH, HLH, HLJ, HCJ, DCJ	Single pack	1

Acoustic hoods



Code n°	Description	Application	Packaging	Pack size
120Z5083	Acoustic hood	HRM032-047, HRP 032-047, HRH 031-040, HRH047, HRH048, HRH050	Single pack	1
120Z5084	Acoustic hood	HRM048-081, HRP048-081, HRH044, HRH049, HRH051-056, HLH061-068, HLJ072-083	Single pack	1
120Z5085	Acoustic hood	HRM094-120, HCP094-120, HCJ091-121, DCJ091-121	Single pack	1

IP54 upgrade kit



Code n°	Description	Application	Packaging	Pack size
118U0056	IP54 upgrade kit for round terminal box	HRM, HLM, HCM, HRP, HLP, HCP, HRH, HLH, HLJ, HHP, HCJ,DCJ	Multipack	6
118U0057	IP54 upgrade kit for square terminal box	HRM, HLM, HCM, HRP, HLP, HCP, HRH, HLH, HLJ, HHP, HCJ,DCJ	Multipack	6

Terminal box and accessories



Code n°	Description	Application	Packaging	Pack Size
120Z5015	Round terminal box (P & T version)	HRM, HLM, HCM, HRP, HLP, HCP, HRH, HLH, HLJ, HCJ,DCJ	Multipack	10
120Z5018	Square terminal box (C & Q version)	HRM, HLM, HCM, HRP, HLP, HCP, HRH, HLH, HLJ, HCJ,DCJ	Multipack	10

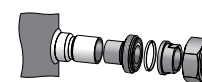


MLZ & MLM range



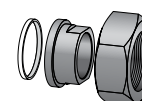
LLZ range

Solder sleeve adapter sets



Code n°	Description	Application	Packaging	Pack size
120Z0126	Solder sleeve adapter set (1"1/4 Rotolock, 3/4" ODF), (1" Rotolock, 1/2" ODF)	MLZ/MLM015.019.021.026	Multipack	6
120Z0127	Solder sleeve adapter set (1"1/4 Rotolock, 7/8" ODF), (1" Rotolock, 1/2" ODF)	MLZ/MLM030.038.042.045	Multipack	6
120Z0128	Solder sleeve adapter set (1"1/4 Rotolock, 7/8" ODF), (1"1/4 Rotolock, 3/4" ODF)	MLZ/MLM048	Multipack	6
120Z0129	Solder sleeve adapter set (1"3/4 Rotolock, 1"1/8 ODF), (1"1/4 Rotolock, 7/8" ODF)	MLZ/MLM058.066.076	Multipack	6

Rotolock nuts and sleeves kit



Code n°	Description	Application	Packaging	Pack size
120Z5074	Rotolock nuts 1"1/4 and 1" with sleeves and gaskets	MLZ/MLM015.019.021.026.030.038.042.045	Multipack	6
120Z5076	2 rotolock nuts 1"1/4 and 1" with sleeves and gaskets	MLZ/MLM048	Multipack	6
120Z5075	Rotolock nuts 1"1/4 and 1"3/4 with sleeves and gaskets	MLZ/MLM058.066.076	Multipack	6

Magnetic discharge non return valve



Code n°	Description	Application	Packaging	Pack size
120Z5046	Magnetic discharge non return valve	MLZ/MLM058.066.076 & LLZ	Multipack	6

Run capacitors for PSR wiring



Code n°	Description	Application	Packaging	Pack size
120Z0052	PSC wiring Run Capacitor 80 µF,	60HZ, Motor Code 1 : MLZ/MLM042	Multipack	10
120Z0051	PSC wiring Run Capacitor 70 µF,	"50Hz, Motor Code 5: MLZ/MLM019-021-26 60HZ, Motor Code 1 : MLZ/MLM030"	Multipack	10
120Z0050	PSC wiring Run Capacitor 60 µF,	60HZ, Motor Code 1 : MLZ/MLM026	Multipack	10
8173234	PSC wiring Run Capacitor 55 µF,	"50Hz, Motor Code 5: MLZ/MLM038-042 60HZ, Motor Code 1: MLZ/MLM038"	Multipack	10
8173233	PSC wiring Run Capacitor 50 µF,	50Hz, Motor Code 5: MLZ/MLM030	Multipack	10
8173232	PSC wiring Run Capacitor 45 µF,	60HZ, Motor Code 1 : MLZ/MLM015-019-021	Multipack	10
8173231	PSC wiring Run Capacitor 40 µF,	50Hz, Motor Code 5: MLZ/MLM015	Multipack	10

Start capacitors for CSR wiring



Code n°	Description	Application	Packaging	Pack size
120Z0399	CSR wiring Start Capacitor 145-175 µF,	50Hz, Motor Code 5: MLZ/MLM015-019-021-026 60HZ, Motor Code 1 : MLZ/MLM015-019-021	Multipack	10
120Z0400	CSR wiring Start Capacitor 161-193 µF,	50Hz, Motor Code 5: MLZ/MLM030 60HZ, Motor Code 1 : MLZ/MLM030	Multipack	10
8173001	CSR wiring Start Capacitor 88-108 µF,	"50Hz, Motor Code 5: MLZ/MLM038-042 60HZ, Motor Code 1 : MLZ/MLM026 ,MLZ/MLM038"	Multipack	10

Starting relays for CSR wiring



Code n°	Description	Application	Packaging	Pack size
120Z0394	CSR wiring Starting Relay, motor voltage code 5 - 220-240V / 1 / 50Hz	MLZ/MLM015-019-021-026-30	Multipack	10
120Z0395	CSR wiring Starting Relay, motor voltage code 5 - 220-240V / 1 / 50Hz	MLZ/MLM038-042	Multipack	10
120Z0396	CSR wiring Starting Relay, motor voltage code 1 -208-230V / 1 / 60Hz	MLZ/MLM015-019-021	Multipack	10
120Z0397	CSR wiring Starting Relay, motor voltage code 1 -208-230V / 1 / 60Hz	MLZ/MLM026-030,MLZ/MLM042	Multipack	10
120Z0398	CSR wiring Starting Relay, motor voltage code 1 -208-230V / 1 / 60Hz	MLZ/MLM038	Multipack	10

IP54 upgrade kits



Code n°	Description	Application	Packaging	Pack size
118U0056	IP54 upgrade kit for round terminal box	MLZ/MLM015.019.021.026	Multipack	6
118U0057	IP54 upgrade kit for square terminal box	MLZ/MLM030.038.042.045.058.066.076 All LLZ models	Multipack	6

Mounting kits



Code n°	Description	Application	Packaging	Pack size
120z0661	Mounting kit for 1 scroll compressor including 4 grommets, 4 sleeves, 4 bolts, 4 washers	MLZ/MLM	Single pack	1
120Z0662	Mounting kit for 1 scroll compressor including 4 grommets, 4 sleeves, 4 bolts, 4 washers, rotolock connection kit for suction, discharge and economizer fitting for 1 scroll compressor including 3 Teflon seals, 2 nuts, 3 sleeves	LLZ013.015.018	Single pack	1
120Z0663	Mounting kit for 1 scroll compressor including 4 grommets, 4 sleeves, 4 bolts, 4 washers, rotolock connection kit for suction, discharge and economizer fitting for 1 scroll compressor including 3 Teflon seals, 2 nuts, 3 sleeves	LLZ024.034	Single pack	1
120Z0407	Rigid grommets and washers for tandem / rack assembly. Set for 8 compressors	MLZ/MLM	Single pack	1

All compressors
 SH/SM/SY/SZ/WSH/PSH
 H/HHP
 MLZ/MLM/LLZ
 VSH/VZH
 MT/MTZ/NTZ
 VTZ
 ALPHA NUMERIC

Acoustic hoods


Code n°	Description	Application	Packaging	Pack size
120Z5083	Acoustic hood	MLZ/MLM015.019.021.026	Single pack	1
120Z5084	Acoustic hood	MLZ/MLMM030.038.042.045.048	Single pack	1
120Z5085	Acoustic hood	MLZ/MLM058.066.076	Single pack	1
120Z5052	Acoustic hood	LLZ013.015.018	Single pack	1
120Z5053	Acoustic hood	LLZ024	Single pack	1
120Z5055	Acoustic hood	LLZ034	Single pack	1

Terminal box and accessories


Code n°	Description	Application	Packaging	Pack Size
120Z5015	Round terminal box (P & T version)	MLZ/MLM015.019.021.026	Multipack	10
120Z5018	Square terminal box (C & Q version)	MLZ/MLM030.038.042.045.058.066.076	Multipack	10

Manifolding service kit


Code n°	Description	Application	Packaging	Pack Size
120Z5073	Oil equalisation kit including 2 oil sight glass adaptors, rotolock nuts, sleeves and gaskets, feet spacers and washers for 2 compressors	MLZ/MLM015.019.021.026	Multipack	6



VSH & VZH ranges

Solder sleeve adapter sets



Code n°	Description	Application	Packaging	Pack size
120Z0125	Solder sleeve adapter set (1"3/4 Rotolock, 1"1/8 ODF), (1"1/4 Rotolock, 7/8" ODF)	VSH088 & VZH088	Multipack	8
120Z0405	Solder sleeve adapter set (1"3/4 Rotolock, 1"3/8 ODF), (1"1/4 Rotolock, 7/8" ODF)	VSH117 & VZH117	Multipack	8
7765028	Solder sleeve adapter set, (2"1/4 Rotolock, 1"5/8 ODF), (1"3/4 Rotolock, 1"1/8 ODF)	VSH170 & VZH170	Multipack	6
120Z0126	Solder sleeve adapter set(1"1/4 Rotolock,3/4"ODF), (1" Rotolock, 1/2" ODF)	VZH028-035-044	Multipack	6
120Z0128	Rotolock adaptor set (1-1/4" ~ 7/8") , (1-1/4" ~ 3/4")	VZH052-065	Multipack	6

Discharge thermostats and sensors



Code n°	Description	Application	Packaging	Pack size
120Z0157	Discharge temperature sensor / converter kit	VSH088-117-170 & VZH088-117-170	Single pack	1
120Z0158	Discharge temperature sensor	VSH088-117-170 & VZH088-117-170	Single pack	1
120Z0159	Discharge temperature converter	VSH088-117-170 & VZH088-117-170	Single pack	1
7750009	Discharge thermostat kit	VSH088-117-170 & VZH088-117-170	Multipack	10

Coil



Code n°	Description	Application	Packaging	Pack size
120Z0143	Coil / 230V	VSH all models	Single pack	1
120Z0144	Coil / 24V	VSH all models	Single pack	1
120Z0521	Coil / 208-240V and adaptor	VZH088-117-170	Single pack	1
120Z0522	Coil / 24V and adaptor	VZH088-117-170	Single pack	1

Valve Body



Code n°	Description	Application	Packaging	Pack size
120Z0145	Valve body	VSH088-117-170 & VZH088-117-170	Single pack	1

Acoustic hoods


Code n°	Description	Application	Packaging	Pack size
120Z0152	Acoustic hood for Inverter Scroll compressors	VSH088-G/H	Single pack	1
120Z0153	Acoustic hood for Inverter Scroll compressors	VSH117-G/H	Single pack	1
120Z0154	Acoustic hood for Inverter Scroll compressors	VSH170-G/H/J	Single pack	1
120Z0155	Acoustic hood for Inverter Scroll compressors	VSH088-J	Single pack	1
120Z0156	Acoustic hood for Inverter Scroll compressors	VSH117-J	Single pack	1
120Z0509	Acoustic hood for Inverter Scroll compressors	VZH088-G/H	Single pack	1
120Z0510	Acoustic hood for Inverter Scroll compressors	VZH088-J	Single pack	1
120Z0511	Acoustic hood for Inverter Scroll compressors	VZH088-G/H manifolding	Single pack	1
120Z0512	Acoustic hood for Inverter Scroll compressors	VZH088-J manifolding	Single pack	1
120Z0513	Acoustic hood for Inverter Scroll compressors	VZH117-G/H	Single pack	1
120Z0514	Acoustic hood for Inverter Scroll compressors	VZH117-J	Single pack	1
120Z0515	Acoustic hood for Inverter Scroll compressors	VZH117-G/H manifolding	Single pack	1
120Z0516	Acoustic hood for Inverter Scroll compressors	VZH117-J manifolding	Single pack	1
120Z0517	Acoustic hood for Inverter Scroll compressors	VZH170-G/H	Single pack	1
120Z0519	Acoustic hood for Inverter Scroll compressors	VZH170-J	Single pack	1
120Z0518	Acoustic hood for Inverter Scroll compressors	VZH170-G/H manifolding	Single pack	1
120Z0520	Acoustic hood for Inverter Scroll compressors	VZH170-J manifolding	Single pack	1
120Z5083	Acoustic hood for Inverter Scroll compressors	VZH028-035-044	Single pack	1
120Z5084	Acoustic hood for Inverter Scroll compressors	VZH052-065	Single pack	1

Mounting kits


Code n°	Description	Application	Packaging	Pack size
120Z0066	Mounting kit for 1 scroll compressor. Grommets, sleeves, bolts, washers	VSH088.117 & VZH088.117	Single pack	1
8156138	Mounting kit for 1 scroll compressor. Grommets, sleeves, bolts, washers	VSH170 & VZH170	Single pack	1
120Z0622	Mounting kit for 1 scroll compressor including 4 grommets, 4 sleeves, 4 bolts, 4 washers, 2 grounding screws	VZH028-035-044-052-065	Single pack	1

Terminal boxes and accessories


Code n°	Description	Application	Packaging	Pack size
8173230	T-block connector 52 x 57 mm, 3 screws H10-32 UNF9.5	VSH088-G/H.117-G/H & VZH088-G/H.117-G/H	Multipack	10
8173021	T block connector 60 x 75 mm	VSH088-J.117-J.170-G/H & VZH088-J.117-J.170-G/H	Multipack	10
8173331	T block connector 80 x 80 mm	VSH170-J & VZH170-J	Multipack	10
120Z0146	Electrical box	VSH088-G/H.117-G/H & VZH088-G/H.117-G/H	Single pack	1
120Z0147	Electrical box	VSH170-G/H/J & VZH170-J	Single pack	1
120Z0148	Electrical box	VSH088-J.117-J & VZH088-J.117-J	Single pack	1
120Z0538	Electrical box	VZH170-G/H	Single pack	1
120Z0149	Electrical box cover	VSH088-G/H.117-G/H & VZH088-G/H.117-G/H	Single pack	1
120Z0150	Terminal box cover	VSH170-G/H/J & VZH170-J	Single pack	1
120Z0537	Electrical box cover	VZH170-G/H	Single pack	1
120Z0151	Electrical box cover	VSH088-J.117-J & VZH088-J.117-J	Single pack	1
120Z5015	Electrical box cover	VZH028-035-044	Multipack	10
120Z0151	Electrical box cover	VSH088-J.117-J & VZH088-J.117-J	Single pack	1

Oil level switch


Code n°	Description	Application	Packaging	Pack size
120Z0560	Oil level switch screw in-mechanical part	VZH088-117-170 & VZH028-035-044 & VZH052-065	Single pack	1
120Z0561	Oil level switch screw - electrical part(24V AC/DC)	VZH088-117-170 & VZH028-035-044 & VZH052-065	Single pack	1
120Z0562	Oil level switch screw - electrical part(230V AC)	VZH088-117-170 & VZH028-035-044 & VZH052-065	Single pack	1

LCP's



Code n°	Description	Application	Packaging	Pack size
120Z0326	LCP	VSH088-117-170 & VZH088-117-170 & VZH052-065	Single pack	1
175Z0929	RS cable to LCP	Frequency converter / VSH088-117-170 & VZH088-117-170 & VZH052-065	Single pack	1
130B1088	LCP Blind cover	Frequency converter IP20/IP21 / VSH models	Single pack	1
130B1077	LCP Blind cover	Frequency converter IP55/IP66 / VSH models	Single pack	1
130B0264	LCP cradle, required to mount the LCP on IP55 casings	Frequency converter IP55/VSH088-117-170& VZH088-117-170	Single pack	1
120Z0581	LCP	Frequency converter / VZH028-035-044	Single pack	1
120Z0617	LCP kit for remote mounting	Frequency converter / VZH028-035-044	Single pack	1

Fans



Code n°	Description	Application	Packaging	Pack size
130B3406	Fan 1 (main) IP55	VSH117.170 & VZH117.170	Single pack	1

Control card



Code n°	Description	Application	Packaging	Pack size
130B1109	Control card	VSH088-117-170 & VZH088-117-170	Single pack	1

Accessory bags



Code n°	Description	Application	Packaging	Pack size
130B0980	Accessory bag IP20	VSH088.117 & VZH088-G	Single pack	1
130B1300	Accessory bag IP20	VZH088-J.117-G.170-G	Single pack	1

Relays card



Code n°	Description	Application	Packaging	Pack size
120Z0350	Relays card	VSH088-117-170 & VZH088-117-170	Single pack	1

Decoupling plate



Code n°	Description	Application	Packaging	Pack size
120Z0582	Decoupling plate H3	VZH028.035-G	Single pack	1
120Z0583	Decoupling plate H4 & H5	VZH028.035.044-J & VZH044-G	Single pack	1

All compressors
 SH/SM/SY/SZ/WSH/PSH
 H/HHP
 MLZ/MLM/LLZ
 VSH/VZH
 MT/MTZ/NTZ
 VTZ
 ALPHA NUMERIC


MT / MTZ & NTZ ranges
Single phase PSC starting kits


Code n°	Description	Application	Packaging	Pack size
7701026	Permanent capacitors 440V, 20 µF, 10 µF	MT(Z)18-5, 22-5, 28-5 & NTZ 048-5, 068-5	Multipack	4
7701035	Permanent capacitors 440V, 30 µF, 15 µF	MT(Z)22-1, 44-1, 45-1, 50-1, 51-1, 50-5 & NTZ096-1, 108-1, 136-1	Multipack	4

Single phase CSR starting kits


Code n°	Description	Application	Packaging	Pack size
7701021	Relay + Capacitors: run (15 + 10 µF), start (98 µF)	MT(Z)18-1 & NTZ 048-1	Multipack	4
7701022	Relay + Capacitors: run (20 + 10 µF), start (98 µF)	MT(Z)18-5, 22-5, 28-5 & NTZ 048-5, 068-5	Multipack	4
7701038	Relay + Capacitors: run (30 + 15 µF), start (98 µF)	MT(Z)22-1	Multipack	4
7701154	Relay + Capacitors: run (25 + 25 µF), start (140 µF)	MT(Z)28-1 & NTZ 068-1	Multipack	4
7701155	Relay + Capacitors: run (25 + 20 µF), start (98 µF)	MT(Z)32-1, 36-1	Multipack	4
7701023	Relay + Capacitors: run (25 + 10 µF), start (140 µF)	MT(Z)32-5, 36-5	Multipack	4
7701156	Relay + Capacitors: run (35 + 20 µF), start (98 µF)	MT(Z)40-1	Multipack	4
7701042	Relay + Capacitors: run (30 + 15 µF), start (140 µF)	MT(Z)44-1, 45-1, 50-1, 51-1 & NTZ096-1, 108-1, 136-1	Multipack	6
7701043	Relay + Capacitors: run (30 + 20 µF), start (98 + 98 µF)	MT(Z)56-1, 57-1	Multipack	6
7701044	Relay + Capacitors: run (30 + 25 µF), start (98 + 140 µF)	MT(Z)64-1, 65-1	Multipack	6

Single phase CSR starting kits, prewired box


Code n°	Description	Application	Packaging	Pack size
7701028	Relay + Capacitors: run (20 + 10 µF), start (98 µF)	MT(Z)18-5, 22-5, 28-5 & NTZ 048-5, 068-5	Single pack	1
7701147	Relay + Capacitors: run (30 + 15 µF), start (98 µF)	MT(Z)22-1	Single pack	1
7701029	Relay + Capacitors: run (25 + 10 µF), start (140 µF)	MT(Z)32-5, 36-5	Single pack	1

3 phase soft start equipment


Code n°	Description	Application	Packaging	Pack size
7705006	Electronic soft start kit, MCI 15 C	MT(Z)18-81	Single pack	1
7705007	Electronic soft start kit, MCI 25 C	MT(Z)100-160	Single pack	1

Relays and capacitors


Code n°	Description	Application	Packaging	Pack size
8173022	Starting relay type RVA6AMKL	All Single pack phase models (code 1 & 5)	Single pack	1
8173001	Start capacitor 330V, 88-108 µF (98 µF)	CSR starting kits	Multipack	10
8173002	Start capacitor 330V, 140 µF	CSR starting kits	Multipack	10

Acoustic hoods

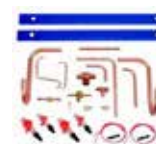

Code n°	Description	Application	Packaging	Pack size
120Z0575	Slim acoustic hood for 1 cyl	MT(Z)18-40 & NTZ048-068	Single pack	1
120Z0576	Slim acoustic hood for 2 cyl	MT(Z)44-81 & NTZ096-136	Single pack	1
120Z0577	Slim acoustic hood for 2 cyl	MT(Z)100-160 & NTZ215-271	Single pack	1

Mounting kits (Grommets, sleeves, bolts, washers, Ebox cover, Solder sleeves and gaskets)


Code n°	Description	Application	Packaging	Pack size
8156001	Mounting kit 1 cyl high	MT(Z) 22-28(1), 32-40, NTZ 048 - 068	Single pack	1
120Z0760	Mounting kit 1 cyl low	MT(Z) 18, 22-28 (except code 1)	Single pack	1
120Z0761	Mounting kit 2 cyl hp	MT(Z) 80(3, 6), NTZ 136(1)	Single pack	1
120Z0762	Mounting kit 2 cyl except HP	MT(Z) 50-64(1), 44-72(6)	Single pack	1
120Z0763	Mounting kit 2 cyl	MT(Z) 44(1), 44-72(3, 4, 6, 7, 9), NTZ 096-108	Single pack	1
120Z0764	Mounting kit 2 cyl HP	MT(Z) 80(4,9), NTZ 136(3,4,9)	Single pack	1
8156007	Mounting kit 4 cyl	MT/MTZ100-160 & NTZ215-271	Single pack	1

Terminal boxes, covers & T-block connectors


Code n°	Description	Application	Packaging	Pack size
8156134	Cover 80 x 96 mm ; clamp	MT/MTZ18-44(1),18-73(3), 18-81(4), 18-50(5), 18-40(6), 32-56(7), 22-80(9) & NTZ048-136 (except 136-1)	Industry pack	10
8173230	T-block connector 52 x 57 mm, 3 screws H10-32 UNF9.5	MT/MTZ50-64(1), 80-160(3), 100-160(4), 44-160(6), 100-160(7), 100-160(9) & NTZ136-1, NTZ215-271	Multipack	10
8156135	Service kit for terminal box 96 x 115 mm, including 1 cover, 1 clamp	MT/MTZ50-64(1), 80-160(3), 100-160(4), 44-160(6), 100-160(7), 100-160(9) & NTZ136-1, NTZ215-271	Industry pack	10

Tandem kits


Code n°	Description	Application	Packaging	Pack size
7702004	Tandem kit	MTM/MTZ200-250 & NTZ430-542	Single pack	1
7702005	Tandem kit	MTM/MTZ288-320	Single pack	1



VTZ range

Acoustic hoods



Code n°	Description	Application	Packaging	Pack size
120Z0575	Slim acoustic hood for 1 cyl	VTZ038.054	Single pack	1
120Z0576	Slim acoustic hood for 2 cyl	VTZ086.121	Single pack	1
7755202	Acoustic hood for 2 cylinder(UL Approved)	VTZ086.121	Single pack	1
120Z0577	Slim acoustic hood for 4 cyl	VTZ171.215.242	Single pack	1

Mounting kits



Code n°	Description	Application	Packaging	Pack size
8156001	Mounting kit 1 cyl	VTZ038.054	Single pack	1
8156007	Mounting kit for 4 cylinder compressor	VTZ171.215	Single pack	1

Terminal boxes, covers & T-block connectors



Code n°	Description	Application	Packaging	Pack size
8173230	T-block connector 52 x 57 mm, 3 screws H10-32 UNF9.5	All VTZ models	Multipack	10
120Z0149	Electrical box cover + clamp	All VTZ models	Single pack	1

LCP's



Code n°	Description	Application	Packaging	Pack size
130B1107	LCP	Frequency converter / all models	Single pack	1
175Z0929	RS cable to LCP	Frequency converter / all models	Single pack	1
130B1088	LCP Blind cover	Frequency converter IP20/IP21	Single pack	1
130B1077	LCP Blind cover	Frequency converter IP55/IP66	Single pack	1

MT/MTZ/NTZ

VTZ

Control card



Code n°	Description	Application	Packaging	Pack size
130B1109	Control card	Frequency converter / all models	Single pack	1

Relays card



Code n°	Description	Application	Packaging	Pack size
130B1110	Relays card	Frequency converter	Single pack	1

Converters



Code n°	Description	Application	Packaging	Pack size
192L0929	RS232/RS485 Converter	Frequency converter	Single pack	1
192L0930	USB/RS485 Converter	Frequency converter	Single pack	1

Code n°	Description	All Compressors	SH/SM/SY/ SZ/WSH/PSH	H/HHP	MLZ/ MLM/LLZ	VSH/VZH	MT/MTZ/ NTZ	VTZ
7701021	Relay + Capacitors: run (15 + 10 µF), start (98 µF)						page 23	
7701022	Relay + Capacitors: run (20 + 10 µF), start (98 µF)						page 23	
7701023	Relay + Capacitors: run (25 + 10 µF), start (140 µF)						page 23	
7701026	Permanent capacitors 440V, 20 µF, 10 µF						page 23	
7701028	Relay + Capacitors: run (20 + 10 µF), start (98 µF)						page 23	
7701029	Relay + Capacitors: run (25 + 10 µF), start (140 µF)						page 23	
7701035	Permanent capacitors 440V, 30 µF, 15 µF						page 23	
7701038	Relay + Capacitors: run (30 + 15 µF), start (98 µF)						page 23	
7701042	Relay + Capacitors: run (30 + 15 µF), start (140 µF)						page 23	
7701043	Relay + Capacitors: run (30 + 20 µF), start (98 + 98 µF)						page 23	
7701044	Relay + Capacitors: run (30 + 25 µF), start (98 + 140 µF)						page 23	
7701147	Relay + Capacitors: run (30 + 15 µF), start (98 µF)						page 23	
7701154	Relay + Capacitors: run (25 + 25 µF), start (140 µF)						page 23	
7701155	Relay + Capacitors: run (25 + 20 µF), start (98 µF)						page 23	
7701156	Relay + Capacitors: run (35 + 20 µF), start (98 µF)						page 23	
7702004	Tandem kit						page 24	
7702005	Tandem kit						page 24	
7703004	Valve set, V06 (1"~1/2"), V01 (1"~3/8")	page 7						
7703005	Valve set, V09 (1"1/4~5/8"), V06 (1"~1/2")	page 7						
7703006	Valve set, V07 (1"3/4~7/8"), V04 (1"1/4~3/4")	page 7						
7703008	Valve set, V02(1"3/4~1"1/8), V05(1"1/4~7/8")	page 7						
7703009	Valve set, V02 (1"3/4~1"1/8), V04 (1"1/4~3/4")	page 7						
7703010	Valve set, V08 (2"1/4~1"3/8), V07 (1"3/4~7/8")	page 7						
7703251	Restrictor + suction/discharge Tees		page 13					
7703371	Restrictor + suction/discharge Tees		page 13					
7703383	Valve set, V03 (2"1/4~1"5/8), V02 (1"3/4~1"1/8)	page 7						
7703384	Restrictor + suction/discharge Tees		page 13					
7703390	Restrictor + suction/discharge Tees		page 13					
7703392	Valve set, V10 (1"3/4~1"3/8), V05 (1"1/4~7/8")	page 7						
7705006	Electronic soft start kit, MCI 15 C		page 10				page 24	
7705007	Electronic soft start kit, MCI 25 C		page 10				page 24	
7750009	Discharge thermostat kit	page 8				page 20		
7754001	Mineral oil, 160P, 2 litre can	page 9						
7754002	Mineral oil, 160P, 5 litre can	page 9						
7754019	POE lubricant, 160PZ, 1 litre can	page 9						
7754023	POE lubricant, 160SZ, 1 litre can	page 9						
7754121	POE lubricant, 320SZ, 1 litre can	page 9						
7755007	Acoustic hood for scroll compressor		page 11					
7755010	Acoustic hood for scroll compressor		page 11					
7755011	Acoustic hood for scroll compressor		page 11					
7755016	Acoustic hood for scroll compressor		page 11					
7755017	Acoustic hood for scroll compressor		page 11					
7755022	Acoustic hood for scroll compressor		page 11					
7755202	Acoustic hood for 2 cylinder(UL Approved)							page 25
7765005	Solder sleeve adapter set (1"3/4 Rotolock, 1"1/8 ODF), (1"1/4 Rotolock, 3/4" ODF)		page 10					
7765006	Solder sleeve adapter set (1"3/4 Rotolock, 1"3/8 ODF), (1"1/4 Rotolock, 7/8" ODF)		page 10					
7765012	Suction header restrictor		page 12					
7765013	Suction header restrictor		page 12					
7765025	Suction header restrictor		page 12					
7765027	Suction header restrictor		page 12					
7765028	Solder sleeve adapter set, (2"1/4 Rotolock, 1"5/8 ODF), (1"3/4 Rotolock, 1"1/8 ODF)		page 10			page 20		
7773013	Belt type crankcase heater, 54W, 400V, UL	page 8						
7773106	Belt type crankcase heater, 54W, 230V, CE mark, UL	page 8						
7773107	Belt type crankcase heater, 65W, 230V, CE mark, UL	page 8						
7773108	Belt type crankcase heater, 75W, 230V, CE mark, UL	page 8						
7773109	Belt type crankcase heater, 65W, 110V, CE mark, UL	page 8						
7773110	Belt type crankcase heater, 75W, 110V, CE mark, UL	page 8						
7773112	Oil equalisation adapter kit for trio mounting. Includes oil fittings, gaskets & adapters (copper pipes not included)		page 14					
7773117	Belt type crankcase heater, 65W, 400V, CE mark, UL	page 8						
7773118	Belt type crankcase heater, 75W, 400V, CE mark, UL	page 8						
7773121	Belt type crankcase heater, 130W, 110V, CE mark, UL	page 8						
7773122	Belt type crankcase heater, 130W, 230V, CE mark, UL	page 8						
7773123	Belt type crankcase heater, 130W, 400V, CE mark, UL	page 8						
7777011	Restrictors, Tees, sleeves, gaskets & oil fittings for quadro mounting (copper pipes not included)		page 13					
7777012	Restrictors, Tees, sleeves, gaskets & oil fittings for trio mounting (copper pipes not included)		page 13					
7777016	Restrictors, sleeves, gaskets & oil fittings for trio mounting (copper pipes & Tees not included)		page 13					
7777037	Suction washer, grommets, sleeve for oil connect		page 13					

Code n°	Description	All Compressors	SH/SM/SY/SZ/WSH/PSH	H/HHP	MLZ/MLM/LLZ	VSH/VZH	MT/MTZ/NTZ	VTZ
7777017	Restrictors, sleeves, gaskets & oil fittings for quadro mounting (copper pipes & Tees not included)		page 13					
7777023	Suction washer		page 12					
7777036	Suction washer		page 12					
7777038	Suction washer, grommets, sleeve for oil connect		page 13					
7777039	Suction washer, grommets, sleeve for oil connect		page 13					
7777040	Suction washer, grommets, sleeve for oil connect		page 13					
7777041	Suction washer, grommets, sleeve for oil connect		page 13					
7777042	Suction washer, rigid spacer, sleeve for oil connect		page 13					
7777043	Suction washer, rigid spacer, sleeve for oil connect		page 13					
7777044	Suction washer, rigid spacer, sleeve for oil connect		page 13					
7777045	Mounting kit for 1 scroll compressor including 4 hexagonal rigid spacers, 4 sleeves, 4 bolts, 4 washers		page 11					
7777048	Suction washer, grommets, sleeve for oil connect		page 13					
7777049	Suction washer, grommets, sleeve for oil connect		page 13					
7777050	Suction washer, rigid spacer, sleeve for oil connect		page 13					
7777052	Suction washer, rigid spacer, sleeve for oil connect		page 13					
7777054	Suction washer, rigid spacer, sleeve for oil connect		page 13					
7956001	Gasket, G01, 1"	page 6						
7956002	Gasket, G09, 1"1/4	page 6						
7956003	Gasket, G07, 1"3/4	page 6						
7956004	Gasket, G08, 2"1/4	page 6						
7968005	Rotolock valve, V09, (1"1/4 Rotolock, 5/8" ODF)	page 7						
7968006	Rotolock valve, V04, (1"1/4 Rotolock, 3/4" ODF)	page 7						
7968007	Rotolock valve, V05, (1"1/4 Rotolock, 7/8" ODF)	page 7						
7968008	Rotolock valve, V07, (1"3/4 Rotolock, 7/8" ODF)	page 7						
7968009	Rotolock valve, V02, (1"3/4 Rotolock, 1"1/8 ODF)	page 7						
7973002	Belt type crankcase heater, 65W, 230V, CE mark, UL	page 8						
7973005	Belt type crankcase heater, 75W, 230V, CE mark, UL	page 8						
7973007	Belt type crankcase heater, 130W, 230V, CE mark, UL	page 8						
7973008	Discharge thermostat kit	page 8						
8153003	Solder sleeve, P10, (1"3/4 Rotolock, 1"3/8 ODF)	page 6						
8153004	Solder sleeve, P02, (1"3/4 Rotolock, 1"1/8 ODF)	page 6						
8153005	Solder sleeve, P08, (2"1/4 Rotolock, 1"3/8 ODF)	page 6						
8153006	Solder sleeve, P03, (2"1/4 Rotolock, 1"5/8 ODF)	page 6						
8153007	Solder sleeve, P06, (1" Rotolock, 1/2" ODF)	page 6						
8153008	Solder sleeve, P04, (1"1/4 Rotolock, 3/4" ODF)	page 6						
8153010	Solder sleeve, P01, (1" Rotolock, 3/8" ODF)	page 6						
8153011	Solder sleeve, P09, (1"1/4 Rotolock, 5/8" ODF)	page 6						
8153012	Rotolock connector, P05, (1"1/4 Rotolock, 7/8" ODS)	page 6						
8153013	Solder sleeve, P07, (1"3/4 Rotolock, 7/8" ODF)	page 6						
8153122	Rotolock nut, 1"	page 6						
8153123	Rotolock nut, 1"1/4	page 6						
8153124	Rotolock nut, 1"3/4	page 6						
8153126	Rotolock nut, 2"1/4	page 6						
8154001	Danfoss CC blue spray paint	page 9						
8156001	Mounting kit 1 cylinder MT(Z) 22-28(1), 32-40, NTZ 048 - 068						page 24	page 25
8156003	Mounting kit for 1 scroll tandem, including 4 rubber grommets		page 11					
8156007	Mounting kit for 4 cylinder MT/MTZ100-160 & NTZ215-271		page 11				page 24	page 25
8156009	Gasket set, 1", 1"1/4, 1"3/4, OSG gaskets black & white	page 6						
8156013	Gasket set, 1"1/4, 1"3/4, 2"1/4, OSG gaskets black & white	page 6						
8156019	Oil sight glass with gaskets (black & white)	page 9						
8156129	Gasket for oil sight glass (white teflon)	page 9						
8156130	Gasket, G01, 1"	page 6						
8156131	Gasket, G09, 1"1/4	page 6						
8156132	Gasket, G07, 1"3/4	page 6						
8156133	Gasket, G08, 2"1/4	page 6						
8156134	Cover 80 x 96 mm ; clamp						page 24	
8156135	Service kit for terminal box 96 x 115 mm, including 1 cover, 1 clamp		page 12				page 24	
8156138	Mounting kit for 1 scroll compressor. Grommets, sleeves, bolts, washers		page 11			page 21		
8156139	Terminal box 186 x 198 mm, incl cover		page 12					
8156144	Mounting kit for 1 scroll compressor. Grommets, sleeves		page 11					
8156145	Gasket for oil sight glass (black chloroprene)	page 9						
8156147	Mounting kit for 1 scroll compressor. Grommets, sleeves, bolts, washers, rotolock nuts, solder sleeves, gaskets		page 11					
8168022	Rotolock valve, V10, (1"3/4 Rotolock, 1"3/8 ODF)	page 7						
8168025	Rotolock valve, V08, (2"1/4 Rotolock, 1"3/8 ODF)	page 7						
8168026	Rotolock valve, V03, (2"1/4 Rotolock, 1"5/8 ODF)	page 7						
8168027	Rotolock valve, V01, (1" Rotolock, 3/8" ODF)	page 7						
8168028	Rotolock valve, V02, (1"3/4 Rotolock, 1"1/8 ODF)	page 7						
8168029	Rotolock valve, V04, (1"1/4 Rotolock, 3/4" ODF)	page 7						
8168030	Rotolock valve, V05, (1"1/4 Rotolock, 7/8" ODF)	page 7						

Code n°	Description	All Compressors	SH/SM/SY/SZ/WSH/PSH	H/HHP	MLZ/MLM/LLZ	VSH/VZH	MT/MTZ/NTZ	VTZ
8168031	Rotolock valve, V06, (1" Rotolock, 1/2" ODF)	page 7						
8168032	Rotolock valve, V07, (1"3/4 Rotolock, 7/8" ODF)	page 7						
8168033	Rotolock valve, V09, (1"1/4 Rotolock, 5/8" ODF)	page 7						
8173001	Start capacitor 330V, 88-108 µF (98 µF)			page 15	page 18		page 24	
8173002	Start capacitor 330V, 140 µF						page 24	
8173021	T block connector 60 x 75 mm		page 12			page 21		
8173022	Starting relay type RVA6AMKL						page 24	
8173230	T-block connector 52 x 57 mm, 3 screws H10-32 UNF9.5		page 12			page 21	page 24	page 25
8173231	Run capacitor 440V, 40 µF			page 15	page 17			
8173233	Run capacitor 440V, 50 µF			page 15	page 17			
8173234	Run capacitor 440V, 55 µF			page 15	page 17			
8173331	T block connector 80 x 80 mm		page 12			page 21		
037N0401	Electronic soft start kit, MCI 50 CM		page 10					
060G0008	LP sensor including plug		page 14					
060G0090	HP sensor including plug		page 14					
060G5707			page 14					
061L4223	Liquid injections valve coil with cable		page 14					
080G0073	MMIMYK		page 14					
080G0075	RJ11 cable		page 14					
080G0294	MMIGRS		page 14					
118U0056	IP54 upgrade kit for round terminal box			page 16	page 18			
118U0057	IP54 upgrade kit for square terminal box			page 16	page 18			
120Z0022	Acoustic hood for scroll compressor		page 11					
120Z0034	Acoustic hood for scroll compressor		page 11					
120Z0035	Acoustic hood for scroll compressor		page 11					
120Z0038	Belt type crankcase heater, 65W, 230V, CE mark, UL	page 8						
120Z0039	Belt type crankcase heater, 65W, 400V, CE mark, UL	page 8						
120Z0040	Start capacitor 250V, 161-193 µF			page 15	page 18			
120Z0050	Run capacitor 440V, 60 µF			page 15				
120Z0051	Run capacitor 440V, 70 µF			page 15	page 17			
120Z0055	Belt type crankcase heater, 40W, 230V, CE mark, UL	page 8						
120Z0056	Belt type crankcase heater, 40W, 400V, CE mark, UL	page 8						
120Z0057	Belt type crankcase heater, 50W, 230V, CE mark, UL	page 8						
120Z0058	Belt type crankcase heater, 50W, 400V, CE mark, UL	page 8						
120Z0059	Belt type Crankcase heaters, 65W, 230V, CE mark, UL	page 8						
120Z0060	Belt type Crankcase heaters, 65W, 400V, CE mark, UL	page 8						
120Z0066	Mounting kit for 1 scroll compressor.Grommets, sleeves, bolts, washers		page 11			page 21		
120Z0125	Solder sleeve adapter set (1"3/4 Rotolock, 1"1/8 ODF), (1"1/4 Rotolock, 7/8" ODF)		page 10			page 20		
120Z0126	Solder sleeve adapter set(1"1/4 Rotolock,3/4"ODF);;(1" Rotolock, 1/2" ODF)			page 15	page 17	page 20		
120Z0127	Solder sleeve adapter set (1"1/4 Rotolock, 7/8" ODF), (1" Rotolock, 1/2" ODF)			page 15	page 17			
120Z0128	Solder sleeve adapter set (1"1/4 Rotolock, 7/8" ODF), (1"1/4 Rotolock, 3/4" ODF)			page 15	page 17			
120Z0129	Solder sleeve adapter set (1"3/4 Rotolock, 1"1/8 ODF), (1"1/4 Rotolock, 7/8" ODF)			page 15	page 17			
120Z0135	Acoustic hood for scroll compressor		page 11					
120Z0143	Coil / 230V					page 20		
120Z0144	Coil / 24V					page 20		
120Z0145	Valve body					page 20		
120Z0146	Electrical box					page 21		
120Z0147	Electrical box					page 21		
120Z0148	Electrical box					page 21		
120Z0149	Electrical box cover + clamp					page 21		page 25
120Z0150	Terminal box cover		page 12			page 21		
120Z0151	Electrical box cover					page 21		
120Z0152	Acoustic hood for Inverter Scroll compressors					page 21		
120Z0153	Acoustic hood for Inverter Scroll compressors					page 21		
120Z0154	Acoustic hood for Inverter Scroll compressors					page 21		
120Z0155	Acoustic hood for Inverter Scroll compressors					page 21		
120Z0156	Acoustic hood for Inverter Scroll compressors					page 21		
120Z0157	Discharge temperature sensor / converter kit					page 20		
120Z0158	Discharge temperature sensor					page 20		
120Z0159	Discharge temperature converter					page 20		
120Z0164	Oil equalisation adapter. To connect 7/8" tube on 22 mm oil sight glass connection. Includes 1 adapter 22 mm to 7/8", 2 gaskets.		page 14					
120Z0165	Oil equalisation adapter. To connect 1/2" tube on 22 mm oil sight glass connection. Includes 1 adapter 22 mm to 1/2", 2 gaskets.		page 14					
120Z0326	LCP					page 22		
120Z0350	Relays card					page 22		
120Z0353	Bottom insulation for scroll compressor		page 11					

Code n°	Description	All Compressors	SH/SM/SY/SZ/WSH/PSH	H/HHP	MLZ/MLM/LLZ	VSH/VZH	MT/MTZ/NTZ	VTZ
120Z0360	Surface sump heater + Bottom insulation, 56W, 24V, CE, UL	page 7						
120Z0361	Surface sump heater + Bottom insulation, 48W, 24V, CE, UL	page 7						
120Z0364	Rotolock adapter (1"3/4 Rotolock, 1"1/8 ODF)	page 6						
120Z0365	Rotolock adapter (1" Rotolock, 1/2" ODF)	page 6						
120Z0366	Rotolock adapter (1"1/4 Rotolock, 3/4" ODF)	page 6						
120Z0367	Rotolock adapter (1"1/4 Rotolock, 7/8" ODF)	page 6						
120Z0372	Surface sump heater + Bottom insulation, 80W, 230V, CE, UL	page 7						
120Z0373	Surface sump heater + Bottom insulation, 80W, 400V, CE, UL	page 7						
120Z0375	Surface sump heater + Bottom insulation, 80W, 575V, CE, UL	page 7						
120Z0376	Surface sump heater + Bottom insulation, 56W, 230V, CE, UL	page 7						
120Z0377	Surface sump heater + Bottom insulation, 56W, 400V, CE, UL	page 7						
120Z0378	Surface sump heater + Bottom insulation, 56W, 460V, CE, UL	page 7						
120Z0379	Surface sump heater + Bottom insulation, 56W, 575V, CE, UL	page 7						
120Z0380	Surface sump heater + Bottom insulation, 48W, 230V, CE, UL	page 7						
120Z0381	Surface sump heater + Bottom insulation, 48W, 400V, CE, UL	page 7						
120Z0382	Surface sump heater + Bottom insulation, 48W, 460V, CE, UL	page 7						
120Z0383	Surface sump heater + Bottom insulation, 48W, 575V, CE, UL	page 7						
120Z0388	Surface sump heater, 80W, 24V, CE, UL	page 7						
120Z0389	Surface sump heater, 80W, 230V, CE, UL	page 7						
120Z0390	Surface sump heater, 80W, 400V, CE, UL	page 7						
120Z0391	Surface sump heater, 80W, 460V, CE, UL	page 7						
120Z0393	Starting relay RVA9CKL			page 16	page 18			
120Z0394	Starting relay type RVA3EKL			page 16	page 18			
120Z0395	Starting relay type RVA4GKL			page 16	page 18			
120Z0399	Start capacitor 250V, 145-175 µF			page 15	page 18			
120Z0402	Surface sump heater, 80W, 575V, CE, UL	page 7						
120Z0405	Solder sleeve adapter set (1"3/4 Rotolock, 1"3/8 ODF), (1"1/4 Rotolock, 7/8" ODF)		page 10			page 20		
120Z0407	Rigid grommets and washers for tandem / rack assembly. Set for 8 compressors				page 18			
120Z0413	Terminal box cover		page 12					
120Z0430	Oil fittings & adapters for quadro mounting (copper pipes not included)		page 14					
120Z0431	Rotolock adapter (1"3/4 Rotolock, 1"3/8 ODF)	page 6						
120Z0432	Rotolock adapter (2"1/4 Rotolock, 1"5/8 ODF)	page 6						
120Z0458	Terminal box 210 x 190 incl. cover		page 12					
120Z0459	PTC heater 27W	page 8						
120Z0460	PTC heater 27W	page 8						
120Z0462	Terminal box 210 x 190 incl. cover and module wiring For 258 x 208 terminal box replacement		page 12					
120Z0464	Belt type crankcase heater, 75W, 460V, CE mark, UL	page 8						
120Z0465	Belt type crankcase heater, 75W, 575V, CE mark, UL	page 8						
120Z0466	Belt type crankcase heater, 65W, 460V, CE mark, UL	page 8						
120Z0467	Belt type crankcase heater, 65W, 575V, CE mark, UL	page 8						
120Z0478	Can Bus cable with cable glands		page 14					
120Z0479	Can Bus cable with cable glands		page 14					
120Z0482	DGT sensor with cable		page 14					
120Z0483	Terminal box with 230V OCS		page 12					
120Z0485	Terminal box cover for OCS version		page 12					
120Z0486	OCS connectors		page 12					
120Z0487	Liquid injection valve body		page 14					
120Z0495	Mounting kit for 1 scroll compressor including 4 triangle rigid spacers, 4 sleeves, 4 bolts, 4 washers		page 11					
120Z0504	Solder sleeve adapter set, (2"1/4 Rotolock, 1"5/8 ODF), (1"3/4 Rotolock, 1"3/8 ODF)		page 10					
120Z0509	Acoustic hood for Inverter Scroll compressors					page 21		
120Z0510	Acoustic hood for Inverter Scroll compressors					page 21		
120Z0511	Acoustic hood for Inverter Scroll compressors					page 21		
120Z0512	Acoustic hood for Inverter Scroll compressors					page 21		
120Z0513	Acoustic hood for Inverter Scroll compressors					page 21		
120Z0514	Acoustic hood for Inverter Scroll compressors					page 21		
120Z0515	Acoustic hood for Inverter Scroll compressors					page 21		
120Z0516	Acoustic hood for Inverter Scroll compressors					page 21		
120Z0517	Acoustic hood for Inverter Scroll compressors					page 21		
120Z0518	Acoustic hood for Inverter Scroll compressors					page 21		
120Z0519	Acoustic hood for Inverter Scroll compressors					page 21		
120Z0520	Acoustic hood for Inverter Scroll compressors					page 21		
120Z0521	Coil / 208-240V and adaptor					page 20		
120Z0522	Coil / 24V and adaptor					page 20		
120Z0530	Control board		page 12					
120Z0534	Discharge temperature sensor PT100		page 14					
120Z0537	Electrical box cover					page 21		
120Z0538	Electrical box					page 21		
120Z0547	Valve set, V03 (2"1/4~1"5/8), V10 (1"3/4~1"3/8)	page 7						
120Z0550	Suction washer, grommets, sleeve for oil connect		page 13					
120Z0551	Suction washer, grommets, sleeve for oil connect		page 13					

Code n°	Description	All Compressors	SH/SM/SY/SZ/WSH/PSH	H/HHP	MLZ/MLM/LLZ	VSH/VZH	MT/MTZ/NTZ	VTZ
120Z0560	Oil level switch screw in - mechanical part					page 21		
120Z0561	Oil level switch screw - electrical part (24V AC/DC)					page 21		
120Z0562	Oil level switch screw - electrical part (230V AC)					page 21		
120Z0563	Terminal box with 230V OCS		page 12					
120Z0565	Terminal box with 230V OCS		page 12					
120Z0569	Suction washer, grommets, sleeve for oil connect		page 13					
120Z0571	POE lubricant, 160SZ, 2.5 litre can	page 9						
120Z0572	POE lubricant, 320SZ, 2.5 litre can	page 9						
120Z0573	POE lubricant, 160PZ, 2.5 litre can	page 9						
120Z0575	Slim acoustic hood for 1 cyl						page 24	page 25
120Z0576	Slim acoustic hood for 2 cyl						page 24	page 25
120Z0577	Slim acoustic hood for 4 cyl						page 24	page 25
120Z0578	Suction washer, grommets, sleeve for oil connect		page 13					
120Z0579	Acoustic hood for scroll compressor		page 11					
120Z0581	LCP					page 22		
120Z0582	Decoupling plate H3					page 22		
120Z0583	Decoupling plate H4					page 22		
120Z0584	Electronic motor protection module, 24 V AC		page 10					
120Z0585	Electronic motor protection module, 115/240 V AC		page 10					
120Z0617	LCP kit for remote mounting					page 22		
120Z0622	Mounting kit for 1 scroll compressor including 4 grommets, 4 sleeves, 4 bolts, 4 washers, 2 grounding screws					page 21		
120Z0760	Mounting kit 1 cylinder MT(Z) 18, 22-28 (except code 1)						page 24	
120Z0761	Mounting kit 2 cylinder MT(Z) 80(3, 6), NTZ 136(1)						page 24	
120Z0762	Mounting kit 2 cylinder MT(Z) 50-64(1), 44-72(6)						page 24	
120Z0763	Mounting kit 2 cylinder MT(Z) 80(4,9), NTZ 136(3,4,9)						page 24	
120Z0764	Mounting kit 2 cylinder MT/MTZ100-160 & NTZ215-271						page 24	
120Z5012	Belt type crankcase heater, 70W, 460V, CE mark, UL	page 8						
120Z5013	Belt type crankcase heater, 70W, 575V, CE mark, UL	page 8						
120Z5015	Round terminal box (P & T version)			page 16	page 19	page 21		
120Z5018	Square terminal box (C & Q version)			page 16	page 19			
120Z5034	PVE lubricant, 320HV (FVC68D), 1 litre can	page 9						
120Z5038	Belt type crankcase heater, 40W, 460V, CE mark, UL	page 8						
120Z5039	Belt type crankcase heater, 40W, 575V, CE mark, UL	page 8						
120Z5040	Belt type crankcase heater, 70W, 240V, CE mark, UL	page 8						
120Z5041	Belt type crankcase heater, 55/70W, 400/460V, CE mark, UL	page 8						
120Z5042	Belt type crankcase heater, 70W, 575V, CE mark, UL	page 8						
120Z5083	Acoustic hood			page 16	page 19	page 21		
120Z5084	Acoustic hood			page 16	page 19	page 21		
120Z5085	Acoustic hood			page 16	page 19			
120Z5046	Magnetic discharge non return valve				page 17			
120Z5052	Acoustic hood				page 19			
120Z5053	Acoustic hood				page 19			
120Z5055	Acoustic hood				page 19			
120Z5064	Mounting kit for 1 scroll compressor including 4 grommets, 4 sleeves, 4 bolts, 4 washers			page 16				
120Z5073	Oil equalisation kit including 2 oil sight glass adaptors, rotolock nuts, sleeves and gaskets, feet spacers and washers for 2 compressors				page 19			
120Z5074	Rotolock nuts 1"1/4 and 1" with sleeves and gaskets				page 17			
120Z5075	Rotolock nuts 1"1/4 and 1"3/4 with sleeves and gaskets				page 17			
120Z5076	2 rotolock nuts 1"1/4 and 1" with sleeves and gaskets				page 17			
130B0264	LCP cradle, required to mount the LCP on IP55 casings					page 22		
130B0980	Accessory bag IP20					page 22		
130B1077	LCP Blind cover					page 22		page 25
130B1088	LCP Blind cover					page 22		page 25
130B1107	LCP							page 25
130B1109	Control card					page 22		page 26
130B1110	Relays card							page 26
130B1300	Accessory bag IP20					page 22		
130B3406	Fan 1 (main) IP55					page 22		
175G5205	Electronic soft starter MCD 201-055-T6-CVI		page 10					
175Z0929	RS cable to LCP					page 22		page 25
192L0929	RS232/RS485 Converter							page 26
192L0930	USB/RS485 Converter							page 26

Danfoss Commercial Compressors

is a worldwide manufacturer of compressors and condensing units for refrigeration and HVAC applications. With a wide range of high quality and innovative products we help your company to find the best possible energy efficient solution that respects the environment and reduces total life cycle costs.

We have 40 years of experience within the development of hermetic compressors which has brought us amongst the global leaders in our business, and positioned us as distinct variable speed technology specialists. Today we operate from engineering and manufacturing facilities spread across three continents.



Danfoss Scrolls



Danfoss Inverter Scrolls



Danfoss Turbocor Compressors



Danfoss Light Commercial Refrigeration Compressors



Danfoss Maneurop Reciprocating Compressors



Danfoss Optyma Condensing Units

Our products can be found in a variety of applications such as rooftops, chillers, residential air conditioners, heatpumps, coldrooms, supermarkets, milk tank cooling and industrial cooling processes.

[HTTP://CC.DANFOSS.COM](http://cc.danfoss.com)

Danfoss Commercial Compressors, BP 331, 01603 Trévoux Cedex, France | +334 74 00 28 29



Danfoss can accept no responsibility for possible errors in catalogues, brochures and other printed material. Danfoss reserves the right to alter its products without notice. This also applies to products already on order provided that such alterations can be made without subsequential changes being necessary in specifications already agreed. All trademarks in this material are property of the respective companies. Danfoss and the Danfoss logotype are trademarks of Danfoss A/S. All rights reserved.