

# Series 2 manually operated console minivalves

3/2 NC, NO  
Ports M5, Cartridge Ø 4



This series of miniature valves has been especially designed to satisfy all the application requirements of the controls industry with particular attention paid to the operating characteristics required from these components:

- short operational stroke
- small dimensions

## GENERAL DATA

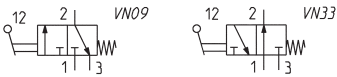
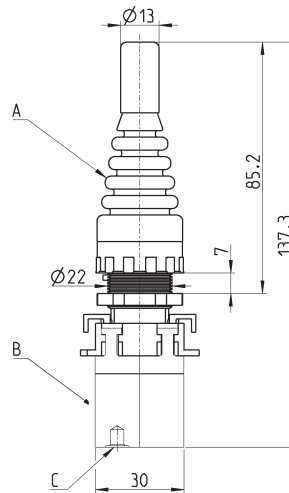
<b>Construction</b>	poppet-type (closed centres)
<b>Valve group</b>	3/2 NC, NO 5/2 and 5/3 CO
<b>Materials</b>	aluminium body, brass plunger, NBR seals
<b>Mounting</b>	panel
<b>Ports</b>	M5 or cartridge dia. 4
<b>Ambient temperature</b>	0°C + 60°C
<b>Medium temperature</b>	0°C + 50°C
<b>Operating pressure</b>	see models

**CODING EXAMPLE**

<b>2</b>	<b>3</b>	<b>4</b>	<b>-</b>	<b>97</b>	<b>5</b>
<b>2</b>	SERIES				
<b>3</b>	FUNCTION: 3 = 3/2-way NC 4 = 3/2-way NO 8 = 5/3-way CO (function realized with 2x 3/2-way NC valves)				
<b>4</b>	PORTS: 4 = cartridge $\varnothing$ 4 5 = M5				
<b>97</b>	MODE OF OPERATION: 87 = 3 position selector 89 = push button 97 = palm switch 90 = joystick 99 = 2 position selector 92 = pedal 904 = key				
<b>5</b>	RESETTING: 5 = spring return 0 = stable 2 = latching-twist to release 54 = joystick				

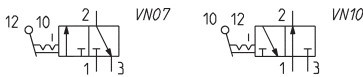
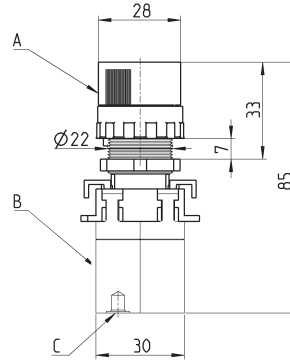
SERIES 2 MANUALLY OPERATED CONSOLE MINIVALVES

**Minivalves Mod. 23..-905, 24..-905**



Mod.	Operating pressure (bar)	Flow (NL/min)	A	B	C (Supply/port)	Symbols
234-905	2 ÷ 8	60	200-905	234-000	$\varnothing$ 4/2	VN09
235-905	2 ÷ 8	60	200-905	235-000	M5	VN09
244-905	2 ÷ 8	60	200-905	244-000	$\varnothing$ 4/2	VN33
245-905	2 ÷ 8	60	200-905	245-000	M5	VN33

**Minivalves Mod. 23...-990, 24...-990**

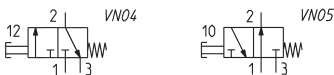
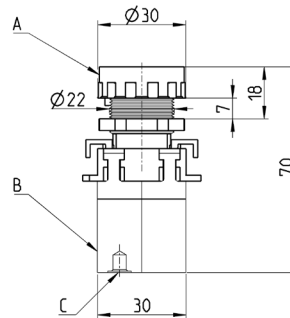


Mod.	Operating pressure (bar)	Flow (NL/min)	A	B	C (Supply/port)	Symbols
234-990	2 ÷ 8	60	200-990	234-000	Ø4/2	VN07
235-990	2 ÷ 8	60	200-990	235-000	M5	VN07
244-990	2 ÷ 8	60	200-990	244-000	Ø4/2	VN10
245-990	2 ÷ 8	60	200-990	245-000	M5	VN10

**Minivalves Mod. 23...-895, 24...-895**

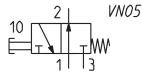
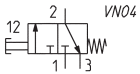
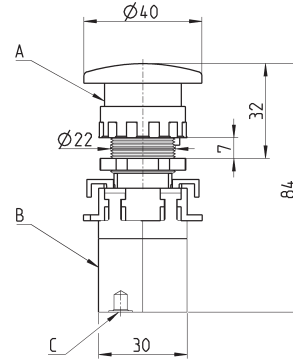


The packaging of the button includes 3 interchangeable disks in the colours red, black and green.



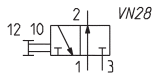
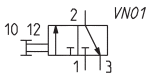
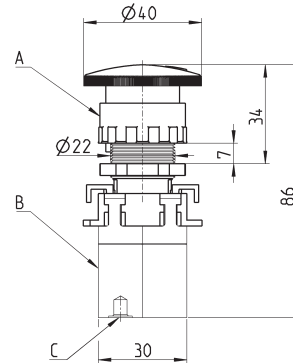
Mod.	Operating pressure (bar)	Flow (NL/min)	Actuating force at 6 bar (N)	A	B	C (Supply/port)	Symbols
234-895	2 ÷ 8	60	7	200-895	234-000	Ø4/2	VN04
235-895	2 ÷ 8	60	7	200-895	235-000	M5	VN04
244-895	2 ÷ 8	60	7	200-895	244-000	Ø4/2	VN05
245-895	2 ÷ 8	60	7	200-895	245-000	M5	VN05

**Minivalves Mod. 23...-975, 24...-975**



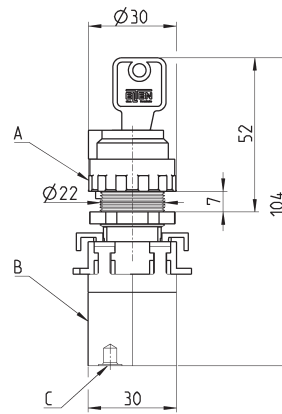
Mod.	Operating pressure (bar)	Flow (NL/min)	Actuating force at 6 bar (N)	A	B	C (Supply/port)	Symbols
234-975	2 ÷ 8	60	7	200-975	234-000	Ø4/2	VN04
235-975	2 ÷ 8	60	7	200-975	235-000	M5	VN04
244-975	2 ÷ 8	60	7	200-975	244-000	Ø4/2	VN05
245-975	2 ÷ 8	60	7	200-975	245-000	M5	VN05

**Minivalves Mod. 23...-972, 24...-972**



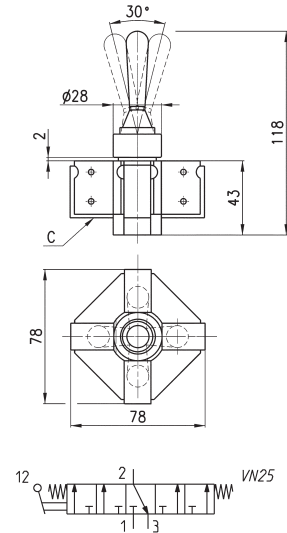
Mod.	Operating pressure (bar)	Flow (NL/min)	Actuating force at 6 bar (N)	A	B	C (Supply/port)	Symbols
234-972	2 ÷ 8	60	7	200-972	234-000	Ø4/2	VN01
235-972	2 ÷ 8	60	7	200-972	235-000	M5	VN01
244-972	2 ÷ 8	60	7	200-972	244-000	Ø4/2	VN28
245-972	2 ÷ 8	60	7	200-972	245-000	M5	VN28

## Minivalves Mod. 23...-904, 24...-904



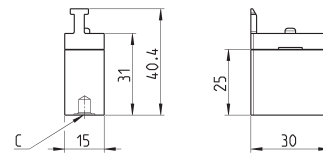
Mod.	Operating pressure (bar)	Flow (NL/min)	A	B	C (Supply/port)	Symbols
234-904	2 ÷ 8	60	200-904	234-000	Ø4/2	VN02
235-904	2 ÷ 8	60	200-904	235-000	M5	VN02
244-904	2 ÷ 8	60	200-904	244-000	Ø4/2	VN31
245-904	2 ÷ 8	60	200-904	245-000	M5	VN31

**Joystick valves Mod. 234-9054, 235-9054**

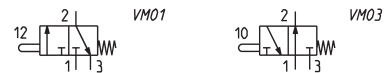


Mod.	Minimum pressure (bar)
234-9054	2
235-9054	2

**Minivalves Mod. 234-000, 235-000, 244-000, 245-000**



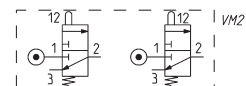
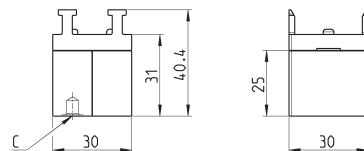
Mod.	Operating pressure (bar)	Flow (Nl/min)	Symbols
234-000	2 ÷ 8	60	VM01
235-000	2 ÷ 8	60	VM01
244-000	2 ÷ 8	60	VM03
245-000	2 ÷ 8	60	VM03



**Minivalves Mod. 284-000, 285-000**

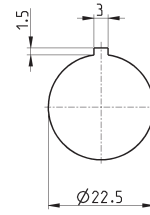


The codes shown in the table are composed by two 3/2-way valves NC which can be operated with the control device Mod. 200-870 only.



Mod.	Operating pressure (bar)	Flow (Nl/min)	Symbols
284-000	2 ÷ 8	60	VM21
285-000	2 ÷ 8	60	VM21

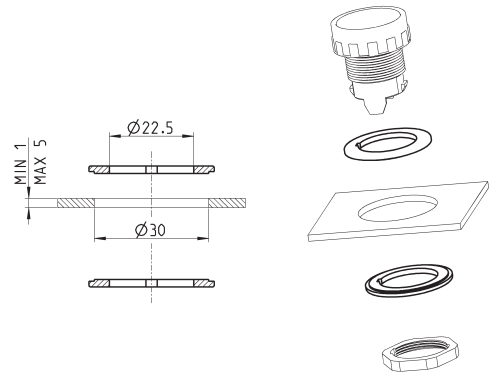
## Drilling for mounting



## Adaptor

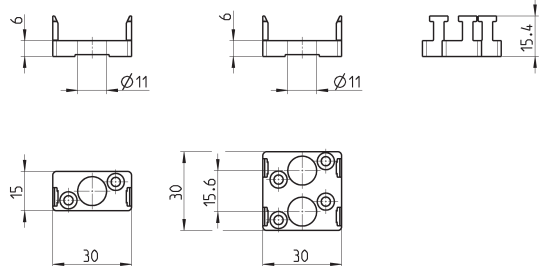


Panel hole adaptor Ø30  
 Supplied with:  
 2x reduction rings



Mod.  
 200-2230

## End cover



Mod.  
 210-000  
 220-000