

General application valves for dry or lubricated air, neutral gases and liquids

2/2

Applications

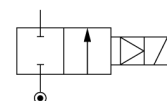
Pilot operated valves are ideally suited to shut-off applications of liquids with high flow and pressure. A minimum operating pressure is required: refer to tables.



Pilot operated

Port size	Orifice (mm)	Flow factors (L/min)			Admissible differential pressure bar			Fluid temp. °C			Seat disc	Reference numbers				Power consumption (W)		Wt. (g)	El. Part Group *	Dim ref.
		Liquids kv	Gases Qmax	Qn	Min	Max DC	AC	Gas	Liquid	Oil		Global valve reference	Valve reference no.	Housing	Coil	DC	AC			

Normally closed



Brass body/Pipe mounting

1/4	8	36	36	-	0.3	25	40	-	100	100	FKM	7321HBG2SV00	E321H21	1	2995	481865	9	8	800	2	9
	8	36	36	-	0.3	30	40	-	100	100	FKM				4270	481000	8	8	920	2	
	8	36	36	-	0.3	40	40	-	100	100	FKM				4270	486265	14	14	930	2	
	8	36	36	1600	0.3	25	40	100	75	100	NBR	7321HBG2SN00	E321H11	1	2995	481865	9	8	800	2	9
	8	36	36	1600	0.3	30	40	100	75	100	NBR				4270	481000	8	8	920	2	
	12	30	30	2150	0.3	10	10	100	100	100	FKM	-	321K3106		8993	481180	5	4	380	1	72
	12	30	30	2150	0.3	7	10	75	75	75	FKM				8993	488980	2.5	2	380	1	
3/8	11	50	50	-	0.3	25	40	-	100	100	FKM	7321HBG3TV00	E321H23	1	2995	481865	9	8	780	2	9
	11	50	50	-	0.3	30	40	-	100	120	FKM				4270	481000	8	8	900	2	
	11	50	50	-	0.3	40	40	-	100	140	FKM				4270	486265	14	14	910	2	
	11	50	50	2800	0.3	25	40	100	75	100	NBR	7321HBG3TN00	E321H13	1	2995	481865	9	8	780	2	9
	11	50	50	2800	0.3	30	40	100	75	100	NBR				4270	481000	8	8	900	2	
	12	45	45	3050	0.3	10	10	100	100	100	FKM	-	321K3306		8993	481180	5	4	380	1	72
	12	45	45	3050	0.3	7	10	75	75	75	FKM				8993	488980	2.5	2	380	1	
1/2	12	50	50	3400	0.3	10	10	100	100	100	FKM	-	321K3506		8993	481180	5	4	380	1	72
	12	50	50	3400	0.3	7	10	75	75	75	FKM				8993	488980	2.5	2	380	1	
	12	50	50	3400	0.3	10	10	100	75	100	NBR	-	321K35		8993	481180	5	4	380	1	72
	12	50	50	3400	0.3	7	10	75	75	75	NBR				8993	488980	2.5	2	380	1	
	14.5	60	60	-	0.3	25	40	-	100	100	FKM	7321HBG4UV00	E321H25	1	2995	481865	9	8	740	2	9
	14.5	60	60	-	0.3	30	40	-	100	120	FKM				4270	481000	8	8	860	2	
	14.5	60	60	-	0.3	40	40	-	100	140	FKM				4270	486265	14	14	870	2	
14.5	60	60	3150	0.3	10	-	75	75	-	NBR	-	321H1590	3	-	483580.01	4	0.4	-	715	7	75

Table continued on page 24

Notes:

- * See Electrical Parts Group table at end of section
- 1. Pilot seat discs from ruby (synthetic)
- 2. Minimum pressure differential = 0.3 bar for opening and 0 bar for closing
- 3. Other coil-housing available: 488650.01, 488660.01, 4888670.01 (refer to electrical parts at end of this section)
- 4. This reference no. is for the complete electrical part (coil + housing)

Valves for oil (hydraulic) and neutral liquids

2/2

Applications

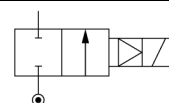
Pilot operated valves are ideally suited to shut-off applications of liquids with high flow and pressure. A minimum operating pressure is required: refer to tables.



Pilot operated

Port size	Orifice (mm)	Flow factors (L/min)		Admissible differential pressure bar			Fluid temp. °C	Seat disc	Reference numbers				Power consumption (W)		Wt. (g)	El. Part Group *	Dim ref.
		kv	Qmax	Min	Max				Global valve reference	Valve reference no.	Housing	Coil	DC	AC			

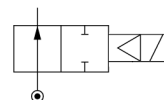
Normally closed



Brass body/Pipe mounting

1/4	8	36	36	0.3 ²	25	40	100	FKM	7321HBG2SV00	E321H21 ¹	2995	481865	9	8	800	2	9
	8	36	36	0.3	30	40	100	FKM			4270	481000	8	8	920	2	
	8	36	36	0.3 ²	40	40	100	FKM			4270	486265	14	14	930	2	
8	36	36	36	0.3 ²	25	40	100	NBR	7321HBG2SN00	E321H11 ¹	2995	481865	9	8	800	2	9
	36	36	36	0.3 ²	30	40	100	NBR			4270	481000	8	8	920	2	
	36	36	36	0.3 ²	40	40	100	NBR			4270	486265	14	14	910	2	
3/8	11	50	50	0.3 ²	25	40	100	FKM	7321HBG3TV00	E321H23 ¹	2995	481865	9	8	780	2	9
	11	50	50	0.3 ²	30	40	120	FKM			4270	481000	8	8	900	2	
	11	50	50	0.3 ²	40	40	140	FKM			4270	486265	14	14	910	2	
11	50	50	50	0.3 ²	25	40	100	NBR	7321HBG3TN00	E321H13 ¹	2995	481865	9	8	780	2	9
	50	50	50	0.3 ²	30	40	100	NBR			4270	481000	8	8	900	2	
	50	50	50	0.3 ²	40	40	100	NBR			4270	486265	14	14	910	2	
1/2	14.5	60	60	0.3 ²	25	40	100	FKM	7321HBG4UV00	E321H25 ¹	2995	481865	9	8	740	2	9
	14.5	60	60	0.3 ²	30	40	120	FKM			4270	481000	8	8	860	2	
	14.5	60	60	0.3 ²	40	40	140	FKM			4270	486265	14	14	870	2	
14.5	60	60	60	0.3 ²	25	40	100	NBR	7321HBG4UN00	E321H15 ¹	2995	481865	9	8	740	2	9
	60	60	60	0.3 ²	30	40	100	NBR			4270	481000	8	8	860	2	

Normally open



Brass body/Pipe mounting

1/4	8	36	36	0.3 ²	40	40	100	FKM	7322HBG2SV00	322H7106 ¹	2995	481865	9	8	820		9
	8	36	36	0.3 ²	40	40	120	FKM			4270	481000	8	8	940		
	8	36	36	0.3 ²	40	40	140	FKM			4270	486265	14	14	950		

Table continued on page 92

Notes:

- * See Electrical Parts Group table at end of section
- 1. Pilot seat discs from ruby (synthetic)
- 2. Minimum pressure differential = 0.3 bar for opening and 0 bar for closing

Oil burner valves 2/2 - Pilot operated

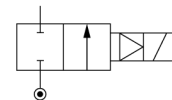
2/2



Pilot operated

Port size	Orifice (mm)	Flow factors (L/min)		Admissible differential pressure bar			Fluid temp. °C	Seat disc	Reference numbers				Power consumption (W)		Wt. (g)	Dim ref.
		kv	Qmax	Min	Max				Global valve reference	Valve reference no.	Housing	Coil	DC	AC		
G						DC	AC									

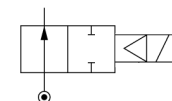
Normally closed



Brass body/Pipe mounting

1/4	8	36	36	0.3	2	25	40	100	FKM	7321HBG2SV00	E321H21 ¹	2995	481865	9	8	800	9
	8	36	36	0.3		30	40	100	FKM			4270	481000	8	8	920	
	8	36	36	0.3	2	40	40	100	FKM			4270	486265	14	14	930	
3/8	11	40	40	0.3	2	-	30	160	FKM	7321HBG3TVT0	321H2322 ³	8760.23	483541	-	20	1070	104
	11	40	40	0.3	2	-	30	160	FKM			8520.23	483541	-	20	1010	
	11	50	50	0.3	2	25	40	100	FKM	7321HBG3TV00	E321H23 ¹	2995	481865	9	8	780	9
	11	50	50	0.3	2	30	40	120	FKM			4270	481000	8	8	900	
	11	50	50	0.3	2	40	40	140	FKM			4270	486265	14	14	910	
1/2	14.5	60	60	0.3	2	25	40	100	FKM	7321HBG4UV00	E321H25 ¹	2995	481865	9	8	740	9
	14.5	60	60	0.3	2	30	40	120	FKM			4270	481000	8	8	860	
	14.5	60	60	0.3	2	40	40	140	FKM			4270	486265	14	14	870	
	15	60	60	0.3		-	30	160	FKM	7321HBG4UVT0	321H2522 ³	8760.23	483541	-	20	870	104
	15	60	60	0.3	2	-	30	160	FKM			8520.23	483541	-	20	870	

Normally open



Brass body/Pipe mounting

1/4	8	36	36	0.3	2	40	40	100	FKM	7322HBG2SV00	322H7106 ¹	2995	481865	9	8	820	9
	8	36	36	0.3	2	40	40	120	FKM			4270	481000	8	8	940	
	8	36	36	0.3	2	40	40	140	FKM			4270	486265	14	14	950	
3/8	11	50	50	0.3	2	40	40	100	FKM	7322HBG3TV00	322H7306 ¹	2995	481865	9	8	800	9
	11	50	50	0.3	2	40	40	100	FKM			4270	481000	8	8	920	
	11	50	50	0.3	2	40	40	140	FKM			4270	486265	14	14	930	

Table continued on page 110

Notes:

1. Pilot seat discs from ruby (synthetic)
2. Minimum pressure differential = 0.3 bar for opening and 0 bar for closing
3. TUV approved for oil burners