

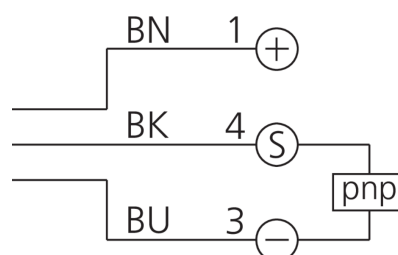
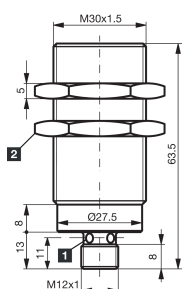
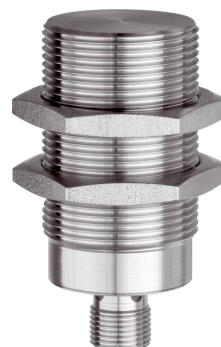


200081

D7C 30 V 20 PSK-IBSL

Inductive proximity sensor

- Closed, all-steel sleeve
- 3-times the standard operating distance
- Same operating distance to steel and aluminum
- Housing and sensing face made of stainless steel
- Insensitive to aggressive cleaning agents, environmental influences and hot filings
- Metal connector
- Integrated amplifier
- Short-circuit protection
- Starting pulse suppression
- LED



1) LED 4 x 90° (yellow)

2) Width over flats 36 mm

BK: black

BN: brown

BU: blue

Function



Technical data (typ.)

+20°C, 24 V DC

Service voltage	10 ... 30 V DC
No-load current (max.)	12 mA
Voltage drop (max.)	2,0 V
Insulation voltage endurance	500 V
Installation type	Flush
Thread	M30 x 1,5
Housing material	Stainless steel
Tightening torque (max.)	150 Nm
Protection class	III, operation on protective low voltage
Operating principle	inductive
Evaluation	digital
Design	Thread
Characteristics	extremely high operating distance, < 40 bar, Full-metal casing closed
Product family	Solid metal housing
Switching output	pnp, 200 mA, NO
Switching distance (SN)	20 mm
Standardized measuring plate	60 x 60 x 1 mm
Switching hysteresis (max.)	15 % (5 % typ.)
Switching frequency	100 Hz
Ambient temperature during operation	-25 ... +70 °C
Protection type	IP 68
Connection	Connector, M12, 4-pin
Connection cable	VK ...

More information / accessories

<https://www.di-soric.com/200081>