

Rittal – The System.

Faster – better – everywhere.

► **Base/plinth corner pieces with base/plinth trim panels, front and rear, optimised design, 100 mm for VX, VX IT, VX SE, TE, TS, TS IT, SE, CM, TP, PC, IW – VX 8640.003**

Date : Sep 10, 2020

ENCLOSURES

POWER DISTRIBUTION

CLIMATE CONTROL

IT INFRASTRUCTURE

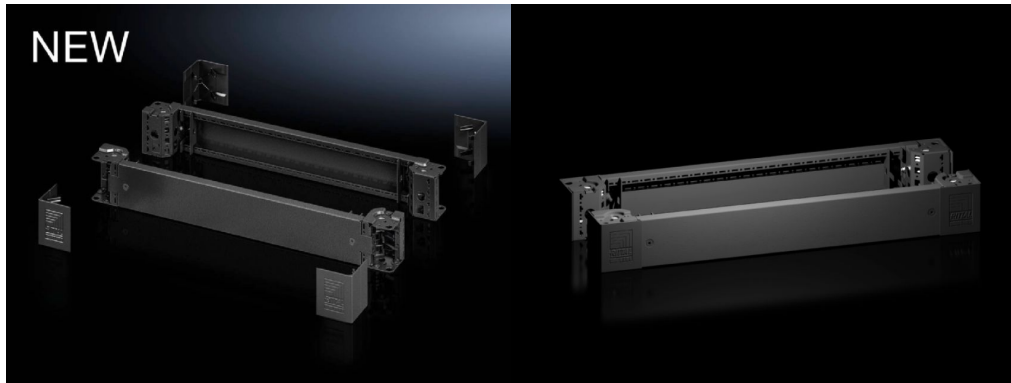
SOFTWARE & SERVICES

FRIEDHELM LOH GROUP



Base/plinth corner pieces with base/plinth trim panels, front and rear, optimised design, 100 mm for VX, VX IT, VX SE, TE, TS, TS IT, SE, CM, TP, PC, IW – VX 8640.003

created: 10.09.2020 build on www.rittal.com/uk-en



Product description

Design:	optimised design
Description:	Optimised version of the VX base/plinth system with improved stability and easy handling due to trim panels screw-fastened from the front. The existing advantages of the base/plinth are retained.
Material:	Base/plinth corner piece: Sheet steel Base/plinth trim panel front/rear: Sheet steel Corner and baying cover: Plastic
Colour:	RAL 9005
Supply includes:	4 base/plinth corner pieces, 100 mm high 4 corner covers 1 baying cover 2 base/plinth trim panels, front/rear, 100 mm high Assembly parts
Note:	Base/plinth trim panels, sides to finish off a unit, for additional stabilisation between base/plinths, or for interior configuration

Product features

To fit:	Width: = 800 mm
Dimensions:	Height: 100 mm

Packs of:	2 pc(s).
Weight/pack:	4.84 kg
Copper weight (kg per piece):	0
EAN:	4028177958753
Customs tariff number:	94039010
ETIM 7.0:	EC000721
ETIM 6.0:	EC000721
eCl@ss 8.0/8.1:	27182003
eCl@ss 6.0/6.1:	27182003
Product description:	VX Base/plinth corner piece, with base/plinth trim panel, front and rear, H: 100 mm, for W: 800 mm, sheet steel
Approvals	
Approvals:	UL + C-UL
Certificates:	EAC