



MVH 330-11Y-AUNI-M20-991-1

- Metal enclosure
- Long life
- 40 mm x 76 mm x 40 mm (basic component)
- Suitable for low actuating speeds
- 1 Cable entry M 20 x 1.5
- free of silicon
- proved in power station applications
- Actuator head can be repositioned in steps 4 x 90°
- Continuous adjustment of lever position 360°
- Lever can be transposed by 180°

Data

Ordering data

Product type description	MVH 330-11Y-AUNI-M20-991-1
Article number (order number)	131159717
EAN (European Article Number)	8905236106958
eCl@ss number, version 12.0	27-27-06-01
eCl@ss number, version 11.0	27-27-06-01
eCl@ss number, version 9.0	27-27-06-01
ETIM number, version 7.0	EC000030
ETIM number, version 6.0	EC000030

General data

Standards	EN IEC 60947-5-1
Working principle	mechanical
Slide form	Castor
Housing material	Light-alloy diecast, paint finish
Housing coating material	painted

Gross weight 435 g

Safety classification - Safety outputs

B_{10D} Normally-closed contact (NC) 20,000,000 Operations

Mechanical data

Actuating element Roller lever
Roller material Plastic
Actuating speed, minimum 1 mm/min
Actuating torque 0.5 Nm

Mechanical data - Connection technique

Wire cross-section 13 AWG

Mechanical data - Dimensions

Length of sensor 40 mm
Width of sensor 40 mm
Height of sensor 136.5 mm
Width of Castor 8.5 mm
Diameter of Castor 20 mm

Ambient conditions

Degree of protection IP65
Ambient temperature -30 ... +90 °C
Resistance to shock 50 g / 6 ms

Ambient conditions - Insulation values

Rated insulation voltage U_i 250 VAC
Rated impulse withstand voltage U_{i,imp} 4 kV

Electrical data

Thermal test current	6 A
Utilisation category AC-15	230 VAC
Utilisation category AC-15	2.5 A
Bounce duration, maximum	1.5 ms
Material of the contacts, electrical	Silver

Pictures

Product picture (catalogue individual photo)



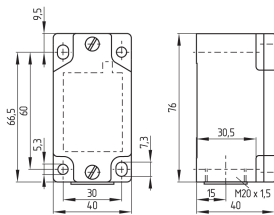
ID: km330f14

| 707.6 kB | .jpg | 167.922 x 420.158 mm - 476 x 1191 px - 72 dpi

| 145.4 kB | .png | 74.083 x 185.208 mm - 210 x 525 px - 72 dpi

| 44.8 kB | .jpg | 49.389 x 123.472 mm - 140 x 350 px - 72 dpi

Dimensional drawing basic component



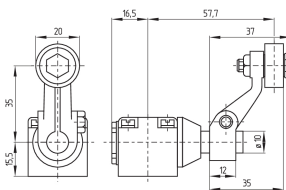
ID: 1m330g01

| 24.6 kB | .cdr |

| 4.0 kB | .png | 74.083 x 51.858 mm - 210 x 147 px - 72 dpi

| 107.3 kB | .jpg | 352.778 x 247.297 mm - 1000 x 701 px - 72 dpi

Dimensional drawing actuator

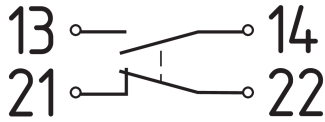


ID: 1m330b14

| 4.9 kB | .png | 74.083 x 52.211 mm - 210 x 148 px - 72 dpi

| 117.7 kB | .jpg | 352.778 x 248.003 mm - 1000 x 703 px - 72 dpi

Diagram



ID: 1t015k04

| 53.3 kB | .jpg | 352.778 x 170.392 mm - 1000 x 483 px - 72 dpi

| 2.6 kB | .png | 74.083 x 35.631 mm - 210 x 101 px - 72 dpi

Operating principle



ID: 235hz05

| 15.2 kB | .cdr |

| 180.5 kB | .jpg | 352.778 x 749.3 mm - 1000 x 2124 px - 72 dpi

| 3.4 kB | .png | 74.083 x 157.339 mm - 210 x 446 px - 72 dpi

Schmersal Ltd., Sparrowhawk Close, WR14 1GL Malvern

The details and data referred to have been carefully checked. Images may diverge from original. Further technical data can be found in the manual. Technical amendments and errors possible.

Generated on: 27/02/2024, 12:48