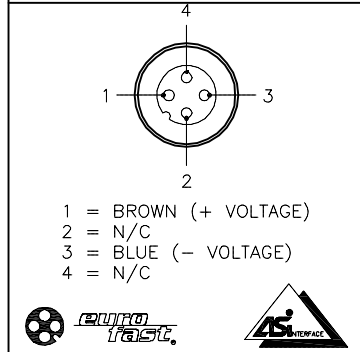


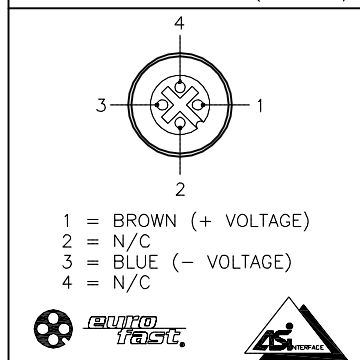
SPECIFICATIONS

HOUSING MATERIAL	DIE-CAST ALUMINUM ALLOY
HOUSING FINISH/COLOR	POWDER COAT/BLACK
RECEPTACLE HOUSING MATERIAL/FINISH	STAINLESS STEEL/PASSIVATED
CONTACT CARRIERS/COLOR	NYLON OR TPU/BLACK
CONTACT MATERIAL/FINISH	BRASS/GOLD
SHORT-CIRCUIT PROTECTION	280 mA
OPEN CIRCUIT VOLTAGE	33 VDC
CURRENT CONSUMPTION (NO LOAD)	11 mA
CURRENT CONSUMPTION (FULL LOAD)	45 mA (ALL PORTS ACTIVE)
PROTECTION CLASS to DIN 40050	IP 67 - ONLY WHEN ALL RECEPTACLES ARE COVERED WITH PLUGS OR CONNECTED
OPERATING TEMPERATURE	-30°C to +80°C (-22°F to +176°F)
LED, INDICATION: GREEN	BUS POWER (CENTER TOP)
LED, INDICATION: GREEN	SHORT-CIRCUIT INDICATION (S1-S8)

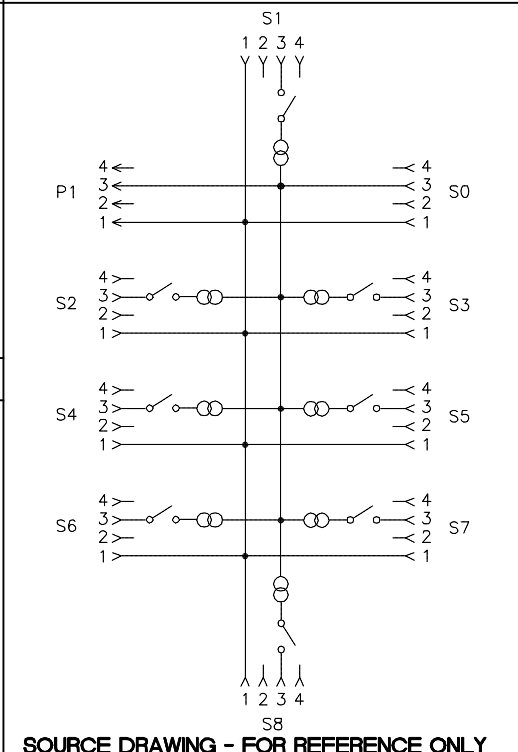
MALE END VIEW (P1)



FEMALE END VIEW (S0-S8)



WIRING DIAGRAM



SOURCE DRAWING - FOR REFERENCE ONLY

- NOTE:
- THIS DEVICE HAS AN IMPEDANCE EQUIVALENT TO TWO (2) SINGLE AS-i SLAVES ON THE NETWORK.
 - "↘" DESIGNATES RIGHT-ANGLE CONNECTOR ORIENTATION.

RELATED DOCUMENTS	3RD ANGLE PROJECTION	THIS DRAWING IS CONFIDENTIAL AND THE PROPERTY OF TURCK INC. USE OF THIS DOCUMENT WITHOUT WRITTEN PERMISSION IS PROHIBITED.	DRFT GB	DATE 04/02/08	DESCRIPTION
1.			APVD	SCALE 1=2.0	JBBS-25SC-E813/S0
2.			UNIT OF MEASUREMENT		IDENTIFICATION NO.
3.			MILLIMETER [INCH]		U3-10779
4.			CONTACT TURCK FOR MORE INFORMATION		REV H
MATERIAL	ALL DIMENSIONS DISPLAYED ON THIS DRAWING ARE FOR REFERENCE ONLY	DO NOT SCALE THIS DRAWING	FILE: U3-10779		
FINISH			SHEET 1 OF 1		

3000 CAMPUS DRIVE MINNEAPOLIS, MN 55441 1-800-544-7769 (763) 553-7300 (763) 553-0708 fax turck.com	TURCK IAC High Technology Sensors and Automation Controls			
H	UPDATE CURRENT CONSUMPTION SPECIFICATIONS PER ECO	KMY	11/06/13	43885
REV	DESCRIPTION	BY	DATE	ECO NO.