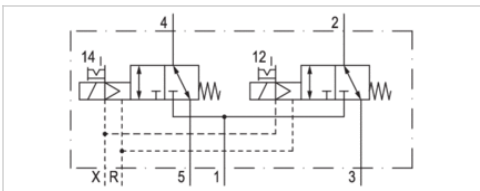





2x3/2-directional valve, Series HF04

- For series : HF04, LP04, HF04-XF
- 2x3/2
- Qn = 400 l/min
- Pilot valve width : 10 mm
- NC/NC
- Plate connection
- Manual override : with detent
- Pilot : External, Internal



Version	Spool valve, positive overlapping
Activation	Electrically
Pilot	External, Internal
Sealing principle	Soft sealing
Blocking principle	Double base plate principle
Working pressure min./max.	-0,9 ... 10 bar
Control pressure min./max.	3 ... 8 bar
Ambient temperature min./max.	-5 ... 50 °C
Medium temperature min./max.	0 ... 50 °C
Medium	Compressed air
Max. particle size	5 µm
Oil content of compressed air	0 ... 5 mg/m ³
Nominal flow Qn	400 l/min
Pilot control exhaust	With collective pilot air exhaust
Protection class with connection	IP65
Protective circuit	Z-diode
Reverse polarity protection	Protected against polarity reversal
LED status display	Yellow
Duty cycle	100 %
Typ. switch-on time	13 ms
Typ. switch-off time	20 ms
mounting screws	cross recessed DIN EN ISO 4757-Z0
Mounting screw tightening torque	0,25 Nm
Weight	0,048 kg

Technical data

Part No.	MO	Operational voltage	Voltage tolerance	
			DC	DC
0820062101		24 V	-10%	+10%
0820062201		24 V	-10%	+10%
0820062301		24 V	-10%	+10%

Part No.	Power consumption
	DC
0820062101	0,55 W
0820062201	0,55 W
0820062301	0,55 W

Technical information

The min. control pressure must be adhered to, since otherwise faulty switching and valve failure may result!

The pressure dew point must be at least 15 °C under ambient and medium temperature and may not exceed 3 °C .

The oil content of compressed air must remain constant during the life cycle.

Use only the approved oils from AVENTICS. Further information can be found in the "Technical information" document (available in the MediaCentre).

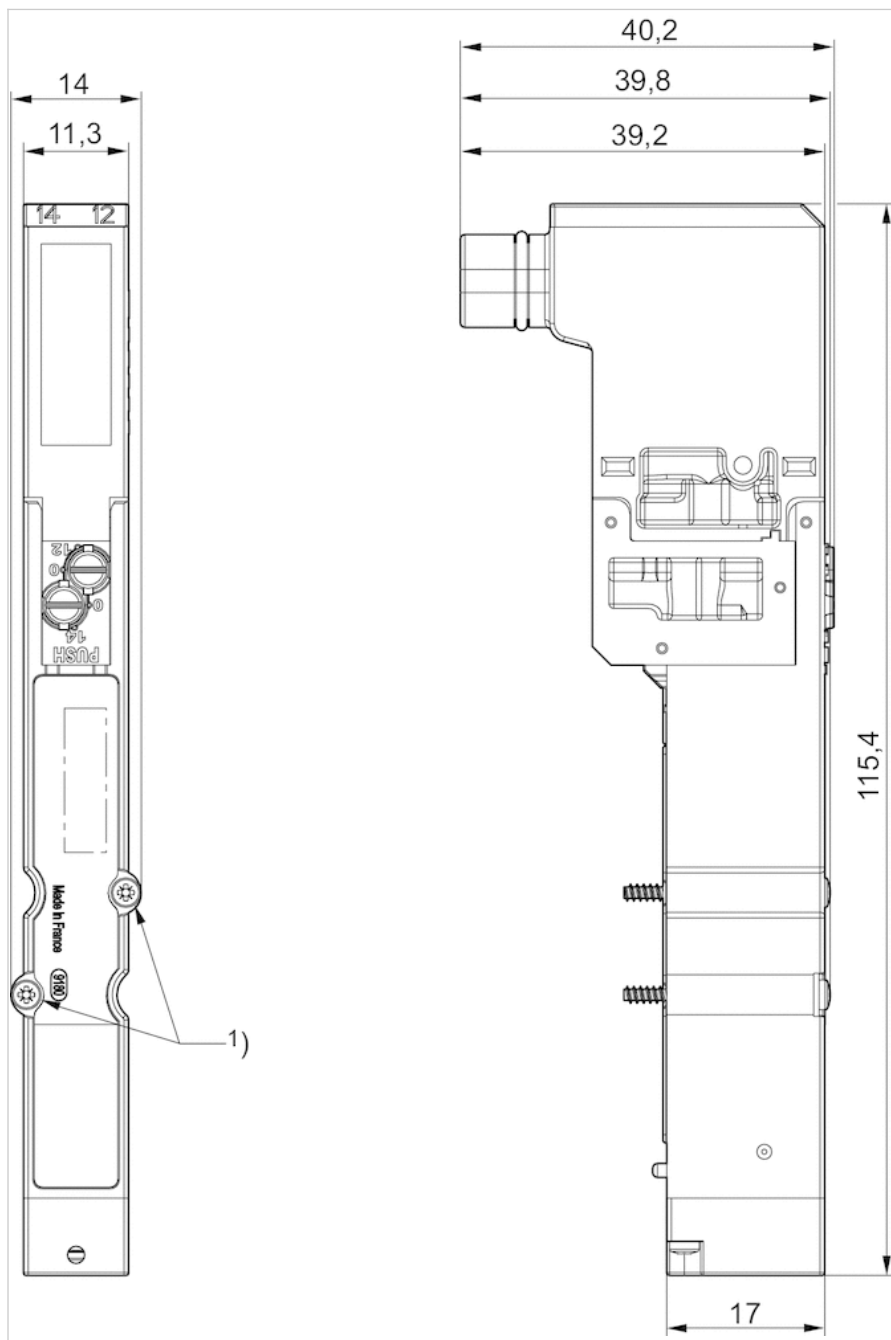
The pilot type (external/internal) is not implemented in the valve, but in the end plate of the valve system.

Technical information

Material	
Housing	Polyamide
Seals	Acrylonitrile butadiene rubber Polyurethane

Dimensions

Dimensions



1) Mounting screw: X-slot DIN EN ISO 4757-Z0
tightening torque for mounting screw [Nm]: 0.25