

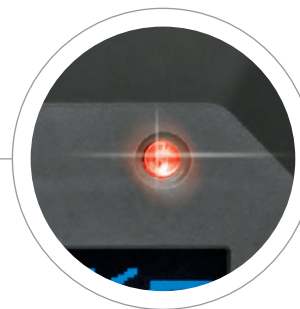
# AHP 700-L

Drive unit for crimping, cutting  
and punching operations

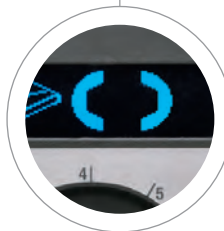


Battery powered hydraulic drive unit with 700 bar

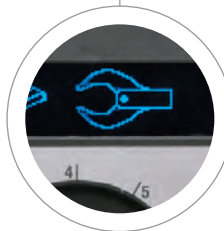
LED for maintenance control,  
charge level indication of batteries and  
for data transmission via USB adapter



Large display indicates function  
selection, pressure readings, battery  
condition and diagnosis information.



Crimping with MRS+  
("teach in")



Cutting with manual retract stop  
(MRS) and automatic retraction



Punching with automatic stop func-  
tion of the ram once the hole has  
been completed.

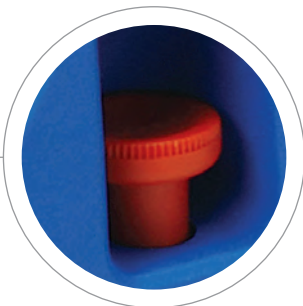


Direct read-out of logged data.

Coupling 180° rotatable

Selector switch for crimping, cutting,  
punching operations and for displaying  
logged data values on the screen.





Manual retract override button



Two powerful 18V Li-Ion batteries of high capacity



**Klauke**  
**AHP 700-L**  
 Battery-hydraulic Pump  
 Nennspannung (Nominal voltage): 18V DC  
 Betriebsdruck (Operating pressure): 700 bar max.  
 Guten Klauke GmbH • Auf dem Knapp 48 • D-42699 Remscheid



The new AHP 700-L features an integrated pressure sensor which automatically identifies the achieved crimping force during every crimping operation:  
**Intelligent Pressing System.**  
 If a deviation from the set operation pressure is identified, an acoustic signal sounds and a red LED flashes.



- 
- 
- 
- easy**
- 18V Li-Ion**
- 
- Energy Save**
- 
- AUTO**
- MAN**
- MRS**
- MRS+**
- 
- BIO**

Shock proof housing made of fibreglass reinforced Polyamid

Integrated storage pocket for remote control

AHP 700-L with crimping head PK 1000



AHP 700-L with cutting head SDK 65



## AHP 700-L for operating single acting crimping-, cutting- and punching tools



- Selector switch for crimping, cutting and punching operations
- Shock proof housing made of fibreglass reinforced Polyamid
- Large display indicates function selection, pressure readings, battery condition and diagnosis information.
- Two powerful 18V Li-Ion batteries of high capacity
- Powerful motor for maximum operating speed
- Manual retract override button
- Manual retraction stop with „teach in“ (MRS+)
- Remote control with cable for easy operation of the drive unit
- Integrated storage pocket for remote control
- LED for maintenance control, charge level indication of batteries and for data transmission via USB adapter
- Environmentally friendly hydraulic oil, quickly biodegradable
- All high pressure hoses are supplied with coupling plug and coupling sleeve, filled with oil
- Cushioned shoulder strap for optimum wearing comfort

Technical data	
Operating pressure:	max. 700 bar
Oil volume:	approx. 800 ml
Flow rate low pressure range:	up to 0.9 l/min
Flow rate high pressure range:	0.3 l/min
Battery voltage:	18 V
Battery capacity:	3.0 Ah, Li-Ion
Charging time:	22 min.
Weight with two batteries:	approx. 6.4 kg
Type of protection:	IP 43
Ambient temperature:	-15°C up to +40°C
Dimension (L x W x H):	330 x 160 x 280 mm

Item	Part No.
Hydraulic drive unit with Ceijn coupling	<b>AHP700L</b>
Hydraulic drive unit with China coupling	<b>AHP700LC</b>
Scope of supply	Part No.
2 Batteries 18 V / 3.0 Ah, Li-ion (54 Wh)	RAL2
Quick charger for 18 V Li-Ion-batteries	LGL1
High pressure hose, 2 m, filled with oil	HSOEL2*
Adjustable cushioned shoulder strap	TG3
Carrying bag for batteries and charger	TT2
Remote control with 1.5 m cable	HTA4

Accessories	Part No.
High pressure hose, 3 m, filled with oil	HSOEL3*
High pressure hose, 4 m, filled with oil	HSOEL4*
High pressure hose, 5 m, filled with oil	HSOEL5*
High pressure hose, 6 m, filled with oil	HSOEL6*
High pressure hose, 8 m, filled with oil	HSOEL8*
High pressure hose, 10 m, filled with oil	HSOEL10*
18 V mains adapter for 230 V	NG2230
USB adapter	PGA1
Digital meter for force and pressure measurement	TC1U
Two-hand safety control	ZST4
Foot switch	FTA4
Pressure sensor 1000 bar	TP1000

\* for AHP700LC part number appendix "C"

### Gustav Klauke GmbH

Auf dem Knapp 46  
D-42855 Remscheid

Phone: +49 (0) 2191 / 907 - 0  
Fax: +49 (0) 2191 / 907 - 141

E-Mail: [info@klauke.textron.com](mailto:info@klauke.textron.com)  
Internet: [www.klauke.com](http://www.klauke.com)