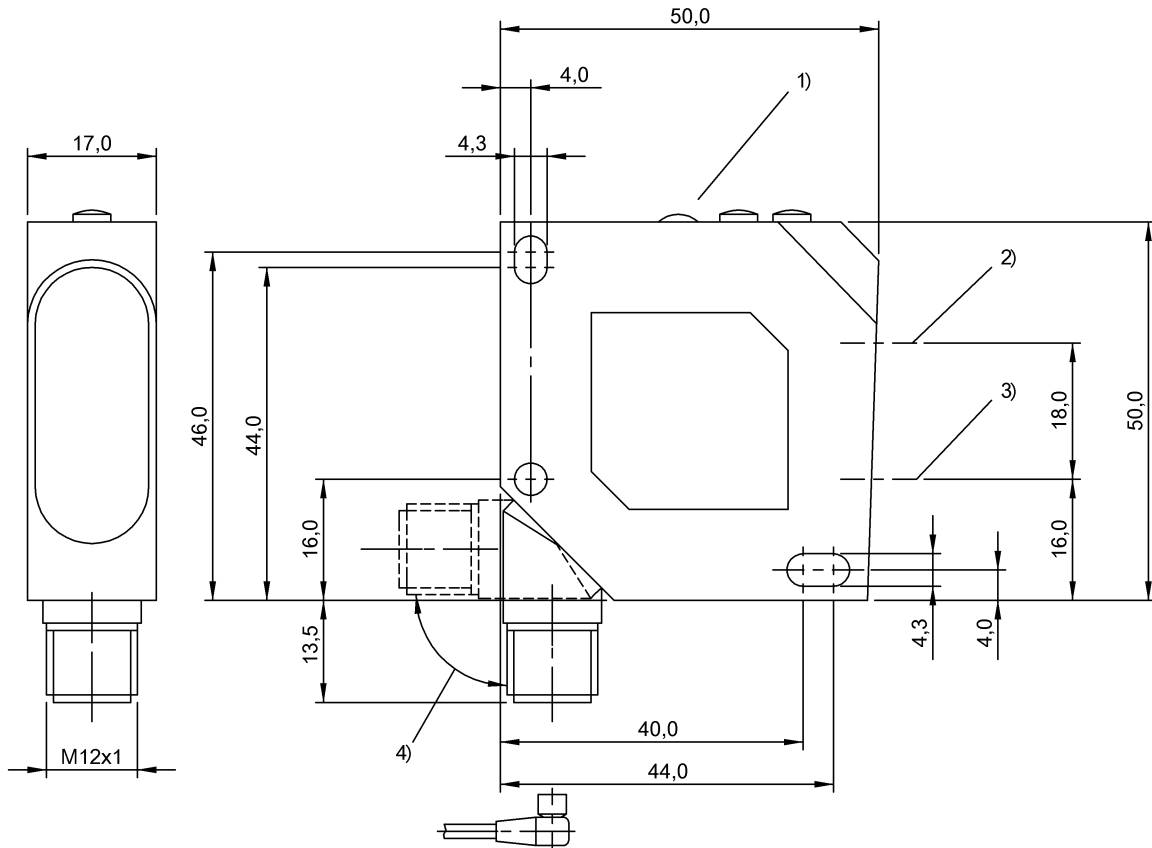
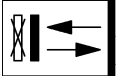


BOS 26K-PA-1HC-S4-C
Order code: BOS0089

Photoelectric sensor
 Series 26K
 Light scanner, triangulation
 Sn = 300 mm

DC, direct current
 PNP (2x)
 NO light-on - NC dark-on
 1.000 Hz
 LED, red light

BALLUFF
sensors worldwide



1) Display and control panel 2) Optical axis receiver 3) Optical axis emitter 4) 270° rotatable

Basic data

Operating voltage UB DC 10,0 V... 30,0 V
 Eff. operating voltage Ue DC 24,0 V
 Ripple max. (% of Ue) 10 %
 No-load current max. Io at Ue 35 mA
 Polarity reversal protected yes
 Protection Class II
 Rated insulation voltage Ui 75 V DC
 Indicator Stability - LED GN
 Output function - LED YE
 Error - LED RD
 Switching dist. - dig. disp. Potentiometer 2-turn (1x)
 Ambient temperature Ta -20 °C... 60 °C

Optical data

Principle of optical operation Light scanner, triangulation
 Optical special feature Background suppression
 Detection range Sd 30...300 mm
 Light type LED, red light
 Wavelength 660 nm
 Light spot size, typical Ø8 mm at 200 mm

Ambient light max. 5,000 Lux

Electrical data

Eff. operating distance Sr 300 mm
 Minimum operating distance 30 mm
 Dist. dev. 18% max. (% of Sr) 8 % with 90 % rem.
 Switching output PNP (2x)
 Switching function NO-NC (pins 4-2)
 Eff. operating current Ie 200 mA
 Switching freq. f max. (at Ue) 1.000 Hz
 Turn on time ton max. 0,50 ms
 Turn off time toff max. 0,50 ms
 Voltage drop Ud max. (at Ie) 2,4 V
 Short circuit protected yes
 Load capacitance max. (at Ue) 1,00 µF

Mechanical data

Dimensions 17,0 mm x 50,0 mm x 50,0 mm
 Mounting type Screw M4
 Housing material ABS
 Sensing face material PMMA
 Enclosure Type per IEC 60529 IP67
 Connection type Connector
 Connector type M12x1-S04

00000011125/11715/20100204

BOS 26K-PA-1HC-S4-C
Order code: BOS0089

Photoelectric sensor
 Series 26K
 Light scanner, triangulation
 Sn = 300 mm

DC, direct current
 PNP (2x)
 NO light-on - NC dark-on
 1.000 Hz
 LED, red light

BALLUFF
sensors worldwide

Approval

Approvals / Conformity CE
 cULus

Remarks

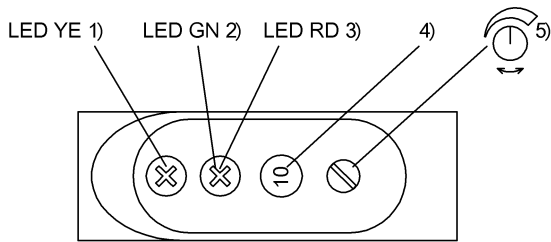
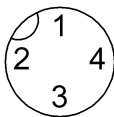
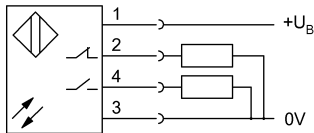
Basic standard IEC 60947-5-2
 The sensor is functional again after the overload has been eliminated.

Reference object (target): Gray card, 200 x 200,
 90 % remission, axial approach.
 With connector, e.g. BKS-S 20-... total length = switch length +18 mm.
 Only for NFPA 79 applications (machines with a supply voltage of maximum 600 volts). Device shall be connected only by using any R/C (CYJV2) cord, having suitable ratings.
 For additional information, refer to user's guide.
 Order accessories separately.



Definitions see general catalog

Subject to change without notice.



1) Output function 2) Stability 3) Error 4) Switching dist. dig. displ. 5) Sensitivity

00000011125/11715/20100204