



SHGV/ESS21S2/xxx/103

Data

Ordering data

Product type description	SHGV/ESS21S2/xxx/103
Note (Ordering data)	Note: In the order/inquiry the requested lock number "xxx" must be specified (e.g. SHGV/ESS21S2/125/103)! If no lock number is indicated in the order/inquiry, we will supply a lock number at our discretion. The user must ensure that lock numbers are not assigned twice in a single plant (factory site)! The user must ensure that no double key bit numbers are allocated on one site (company site)!

General data

Product name	Key selector switch
Standards	IEC 60947-5-1 ISO 14119 IEC/EN 60947-1
Versions	Key - Selector switch - Front plate mounting
Installation conditions (mechanical)	arbitrarily
Sealing type	Membrane Lip gaskets Form seals
Enclosure material	Plastic, glass-fibre reinforced thermoplastic, self-extinguishing
Material of the contacts, electrical	Silver
Material of the cylinder lock	Steel
Material of the front ring	Aluminium
Colour of the cylinder lock	Silver

Colour of the Contact element	Black
Colour of the front ring	Silver
Colour of key head	Silver

General data - Features

Latching	Yes
Fully insulated	Yes
Number of auxiliary contacts	1
Number of plunger	1
Number of switch positions	2

Mechanical data

Unlocking	Rotating unlatcher
Key withdrawal position	Position I 90°
Latching position	right
Mounting	mounting flange
Mechanical life, minimum	1,000,000 Operations 300,000 Operations
Tightening torque of the screw	0.6 Nm
Key number	xxx

Mechanical data - Connection technique

Terminal Connector	Screw connection
Cable section, minimum	0.5 mm ² , rigid 0.5 mm ² , flexible
Cable section, maximum	2.5 mm ² , rigid 2.5 mm ² , flexible
Note (Cable section)	All indications about the cable section are including the conductor ferrules.
Tightening torque of Clips	1 Nm

Mechanical data - Dimensions

Length x Width x Height	Height with key (and contact element): 60 mm (119 mm)
Diameter of the front ring	29.5 mm
diameters for the cylinder lock	22 mm

Diameter hole	22.3 mm
Diameter hole, with tolerance indication	22.3 + 0.4 mm
Thickness, of the front panel, minimum	1 mm
Thickness of the front panel, maximum	6 mm
Spacing	40 x 50 mm

Ambient conditions

Protection class	IP65
Protection class of the Switch rooms	IP40
Protection class of Clips or Terminals	IP20
Ambient temperature, minimum	-25 °C
Ambient temperature, maximum	+75 °C
Resistance to shock	110 g / 4 ms
Resistant to vibration	Resistance to vibration: 20 g / 10...200 Hz

Electrical data

Thermal test current	10 A
Utilisation category AC-15	230 VAC
Utilisation category AC-15	8 A
Utilisation category DC-13	24 VDC
Utilisation category DC-13	5 A
Suitable for low- voltages	$\geq 5 \text{ V} / \geq 3.2 \text{ mA}$
Switching element	NC contact, NO contact
Switching principle	Creep circuit element
Bounce duration, maximum	5 ms

Switching frequency 5 /h

Ordering code

Product type description:

SHGV(1)(2)/ESS21S2/(3)(4)/
(5)

(1)

without Standard locking system

-Z/ Central locking system

(2)

without Standard Silver

/SR coloured key heads

(3)

xxx Key number(s) 100 ... 999

(4)

oo/oo Colour of the key grip>#Picture#Bilddata/Interface/Tools/k__bry01.eps#/Picture#
(BR)>#Picture#Bilddata/Interface/Tools/k__gey01.eps#/Picture#
(GB)>#Picture#Bilddata/Interface/Tools/k__roy01.eps#/Picture#
(RT)>#Picture#Bilddata/Interface/Tools/k__bly01.eps#/Picture#
(BL)>#Picture#Bilddata/Interface/Tools/k__wey02.eps#/Picture#
(WS)>#Picture#Bilddata/Interface/Tools/k__guy01.eps#/Picture#
(GR)>#Picture#Bilddata/Interface/Tools/k__gry01.eps#/Picture#
(GN)>#Picture#Bilddata/Interface/Tools/k__swy01.eps#/Picture# (SW)>All colour combinations are therefore possible.

(5)

103 1 NC contacts / 1 NO contact

Documents

Operating instructions and Declaration of conformity

(2,2 MB, 10.05.2019, Revision D)

TÜV certification

(593,3 kB, 23.03.2020)

CCC certification

Pictures

Product picture (catalogue individual photo)

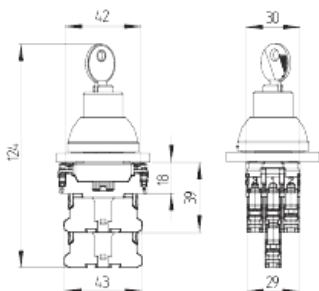


ID: kshgvf02

| 81,3 kB | .png | 74.083 x 173.919 mm - 210 x 493
Pixel - 72 dpi

| 1.000,3 kB | .jpg | 352.778 x 828.675 mm - 1000 x
2349 Pixel - 72 dpi

Dimensional drawing basic component



ID: kshgvg10

| 6,4 kB | .png | 74.083 x 67.381 mm - 210 x 191 Pixel
- 72 dpi

| 132,6 kB | .jpg | 352.425 x 358.422 mm - 999 x 1016
Pixel - 72 dpi

K.A. Schmersal GmbH & Co. KG, Möddinghofe 30, D-42279 Wuppertal

The details and data referred to have been carefully checked. Images may diverge from original. Further technical data can be found in the manual. Technical amendments and errors possible.

Generated on 28.10.2020 12:26:32