

22MM PLASTIC ROUND ACTUATOR: CES KEY-OPER.SWITCH WITH 2 KEYS 2 SWITCH POSITIONS O-I LATCHING LOCK NO SSG 10, REMOVAL POS. O WITH HOLDER !!! Phased-out product !!! SIRIUS ACT 3SU1 is successor Preferred successor type is >>3SU1000-5BF01-0AA0 + 3SU1500-0AA10-0AA0<<



Figure similar

Design of the product	Single device round
<b>Enclosure</b>	
Number of command points	1
<b>Actuator</b>	
Design of the operating mechanism	Key-operated switch
Manner of function of the actuating element	Latching
Product extension optional Light source	No
Color	
• of the actuating element	Silver
Material of the actuating element	metal
Outer diameter of the actuating element	28.5 mm
Type of unlocking device	key unlatching
Number of switching positions	2
Switch position for key distraction	O
Actuating angle	
• clockwise	50°
Lock make	CES

Front ring	
Product component front ring	Yes
Design of the front ring	Standard
Material of the front ring	plastic
Color of the front ring	black

Holder	
Material of the holder	Plastic

General technical data	
<b>Product function</b>	
<ul style="list-style-type: none"> <li>EMERGENCY OFF function</li> <li>EMERGENCY STOP function</li> </ul>	No
<b>Protection class IP</b>	IP66
<b>Vibration resistance</b>	
<ul style="list-style-type: none"> <li>acc. to IEC 60068-2-6</li> </ul>	20 ... 200 Hz: 5g
<b>Operating frequency maximum</b>	1 000 1/h
<b>Mechanical service life (switching cycles)</b>	
<ul style="list-style-type: none"> <li>typical</li> </ul>	300 000
<b>Reference code acc. to DIN 40719 extended according to IEC 204-2 acc. to IEC 750</b>	S

Connections/Terminals	
<b>Tightening torque of the screws in the bracket</b>	1 ... 1.2 N·m






Safety related data	
<b>B10 value</b>	
<ul style="list-style-type: none"> <li>with high demand rate acc. to SN 31920</li> </ul>	50 000
<b>Proportion of dangerous failures</b>	
<ul style="list-style-type: none"> <li>with low demand rate acc. to SN 31920</li> <li>with high demand rate acc. to SN 31920</li> </ul>	20 %
<b>Failure rate [FIT]</b>	
<ul style="list-style-type: none"> <li>with low demand rate acc. to SN 31920</li> </ul>	100 FIT
<b>T1 value for proof test interval or service life acc. to IEC 61508</b>	20 y




Ambient conditions	
<b>Ambient temperature</b>	
<ul style="list-style-type: none"> <li>during operation</li> <li>during storage</li> </ul>	-25 ... +70 °C
Environmental category during operation acc. to IEC 60721	3K6

Installation/ mounting/ dimensions	
<b>Mounting type</b>	front mounting
<b>Shape of the installation opening</b>	round
<b>Mounting diameter</b>	22 mm

Mounting height	64 mm
Installation width	28.5 mm
Installation depth	29 mm

#### Certificates/approvals

General Product Approval		Declaration of Conformity	Test Certificates	Marine / Shipping
				
CSA	UL	EG-Konf.	<a href="#">Special Test Certificate</a>	ABS

Marine / Shipping	other				
			<a href="#">Miscellaneous</a>	<a href="#">Confirmation</a>	<a href="#">Environmental Confirmations</a>
LRS	PRS	RINA			

#### Further information

**Information- and Downloadcenter (Catalogs, Brochures,...)**

<http://www.siemens.com/industrial-controls/catalogs>

**Industry Mall (Online ordering system)**

<https://mall.industry.siemens.com/mall/en/en/Catalog/product?mlfb=3SB3000-4LD01>

**Cax online generator**

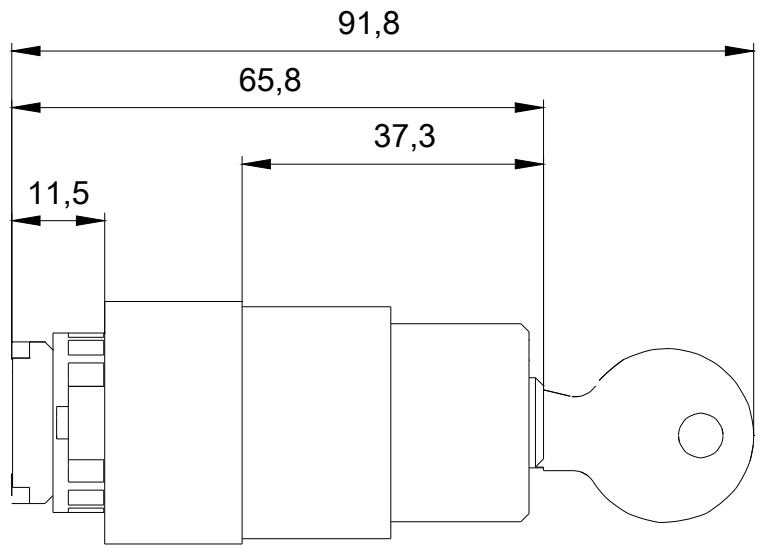
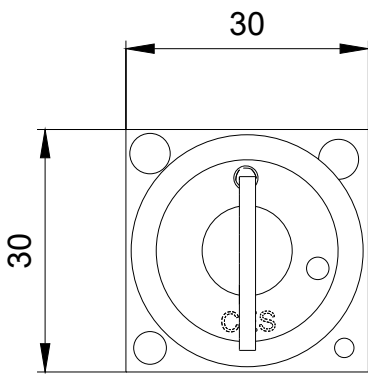
<http://support.automation.siemens.com/WW/CAXorder/default.aspx?lang=en&mlfb=3SB3000-4LD01>

**Service&Support (Manuals, Certificates, Characteristics, FAQs,...)**

<https://support.industry.siemens.com/cs/ww/en/ps/3SB3000-4LD01>

**Image database (product images, 2D dimension drawings, 3D models, device circuit diagrams, EPLAN macros, ...)**

[http://www.automation.siemens.com/bilddb/cax\\_de.aspx?mlfb=3SB3000-4LD01&lang=en](http://www.automation.siemens.com/bilddb/cax_de.aspx?mlfb=3SB3000-4LD01&lang=en)



last modified:

10/17/2018