

## Directional valves ► Mechanically operated

### 3/2-directional valve, Series ST

► With spring return ► Qn= 280 l/min ► pipe connection ► compressed air connection output: G 1/8



00108044

#### Version

Sealing principle  
Working pressure min./max.  
Ambient temperature min./max.  
Medium temperature min./max.  
Medium  
Max. particle size  
Oil content of compressed air  
Mounting screw  
Mounting screw tightening torque

#### Spool valve

not lockable  
metal/metal sealing  
-0.95 bar / 10 bar  
-15°C / +80°C  
-15°C / +80°C  
Compressed air  
5 µm  
5 mg/m³ - 25 mg/m³  
M4 with hexagon socket  
2.5 Nm

#### Materials:

Housing

Stainless steel, hardened

### Technical Remarks

- Notice: This product may only be operated with oiled compressed air.

	Actuating element	Compressed air connection			Qn	Actuating force Min.	Actuating torque Min.	Part No.
		Input	Output	Exhaust				
					[l/min]	[N]	[Nm]	
	Plunger	G 1/8	G 1/8	G 1/8	280	11	-	<b>0820402001</b>
	Roller	G 1/8	G 1/8	G 1/8	280	6.5	-	<b>0820402002</b>
	Roller lever, one-way trip	G 1/8	G 1/8	G 1/8	280	6.5	-	<b>0820402003</b>
	Push button	G 1/8	G 1/8	G 1/8	280	6.5	-	<b>0820402004</b>
	Lever	G 1/8	G 1/8	G 1/8	280	-	0.02	<b>0820402005</b>
	Roller with single-action lever	G 1/8	G 1/8	G 1/8	280	10	-	<b>0820402016</b>
	Roller with articulated lever	G 1/8	G 1/8	G 1/8	280	25	-	0820402017
	Plunger	G 1/8	G 1/8	G 1/8	280	5	-	0820402019
	panel installation	G 1/8	G 1/8	G 1/8	280	11	-	<b>R422002211</b>

Part numbers marked in bold are available from the central warehouse in Germany, see the shopping basket for more detailed information

Pneumatics catalog, online PDF, as of 2016-07-24, ©AVENTICS S.à r.l., subject to change

### 3/2-directional valve, Series ST

► With spring return ► Qn= 280 l/min ► pipe connection ► compressed air connection output: G 1/8

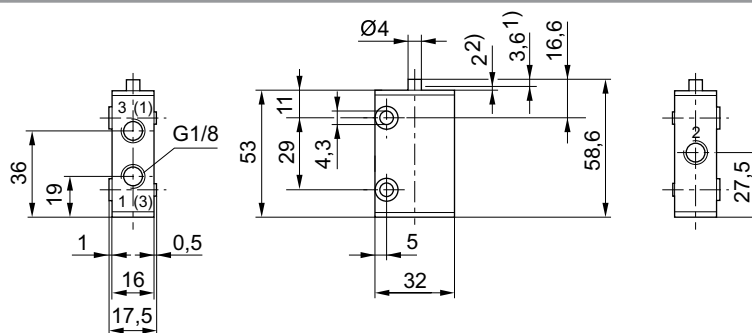
Part No.	Material: Actuating control	Weight	Fig.	Note
		[kg]		
<b>0820402001</b>	Stainless steel	0.17	Fig. 1	-
<b>0820402002</b>	Polyoxymethylene	0.18	Fig. 2	-
<b>0820402003</b>	Polyoxymethylene	0.18	Fig. 3	-
<b>0820402004</b>	Polyamide	0.18	Fig. 4	-
<b>0820402005</b>	Polyamide	0.17	Fig. 5	-
<b>0820402016</b>	Polyoxymethylene	0.29	Fig. 6	-
0820402017	Polyoxymethylene	0.29	Fig. 7	-
0820402019	Stainless steel	0.17	Fig. 8	1)
<b>R422002211</b>	Polyoxymethylene	0.18	Fig. 9	2)

1) horizontal installation position

2) Please order control button separately.

Nominal flow Qn at 6 bar and  $\Delta p = 1$  bar

Dimensions, Fig. 1, Basic valve



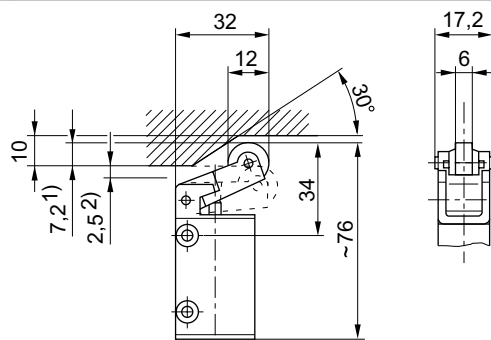
00108045

1) Actuating stroke 2) overstroke

connection via 2 through-holes in housing

Dimensions of basic valve apply to all types of actuation.

Dimensions, Fig. 2



00108046

1) Actuating stroke 2) overstroke

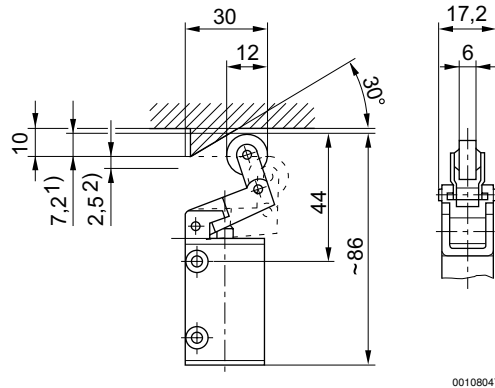
connection via 2 through-holes in housing

## Directional valves ▶ Mechanically operated

### 3/2-directional valve, Series ST

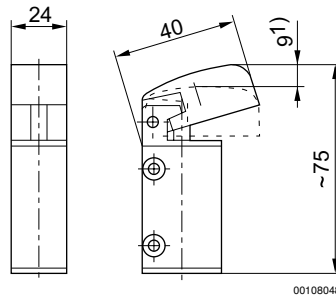
▶ With spring return ▶ Qn= 280 l/min ▶ pipe connection ▶ compressed air connection output: G 1/8

Dimensions, Fig. 3



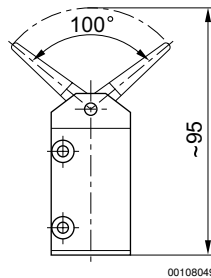
- 1) actuating stroke
- 2) overstroke

Dimensions, Fig. 4



- 1) actuating stroke
- connection via 2 through-holes in housing

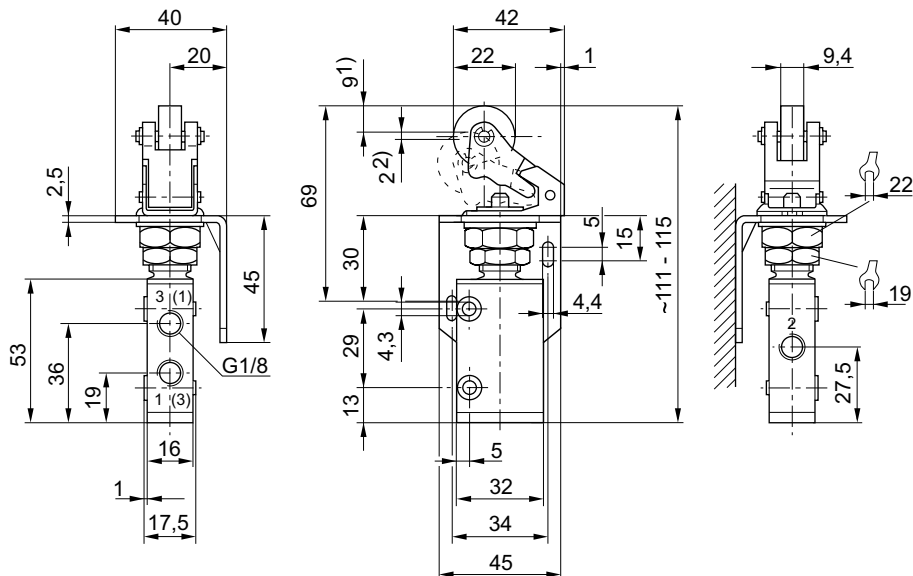
Dimensions, Fig. 5



### 3/2-directional valve, Series ST

► With spring return ► Qn= 280 l/min ► pipe connection ► compressed air connection output: G 1/8

Dimensions, Fig. 6

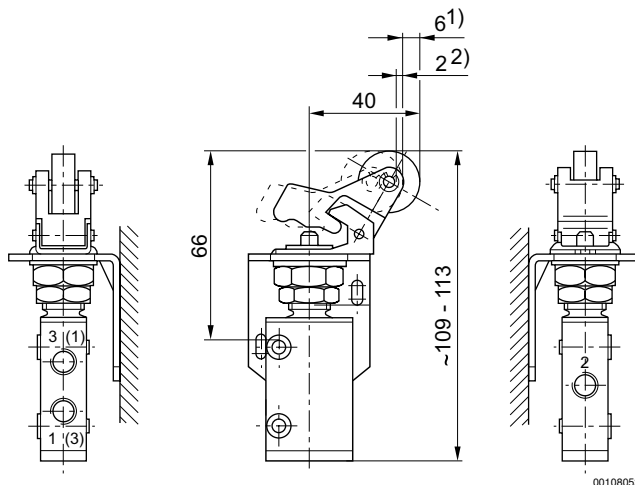


00108051

1) Actuating stroke 2) Overstroke

Can be adjusted by 90°, thereby providing 4 different angles of approach

Dimensions, Fig. 7



00108052

1) Actuating stroke 2) Overstroke

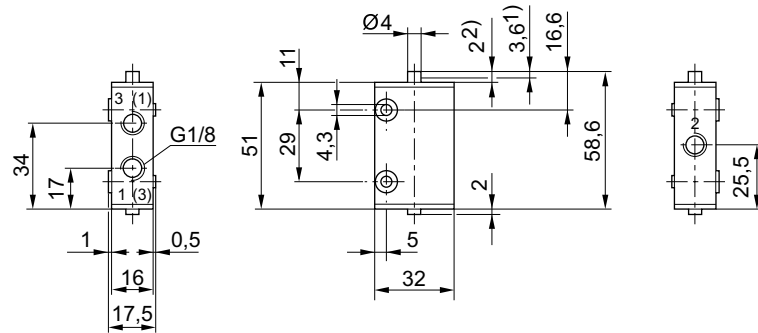
Can be adjusted by 90°, thereby providing 4 different angles of approach

## Directional valves ▶ Mechanically operated

### 3/2-directional valve, Series ST

▶ With spring return ▶ Qn= 280 l/min ▶ pipe connection ▶ compressed air connection output: G 1/8

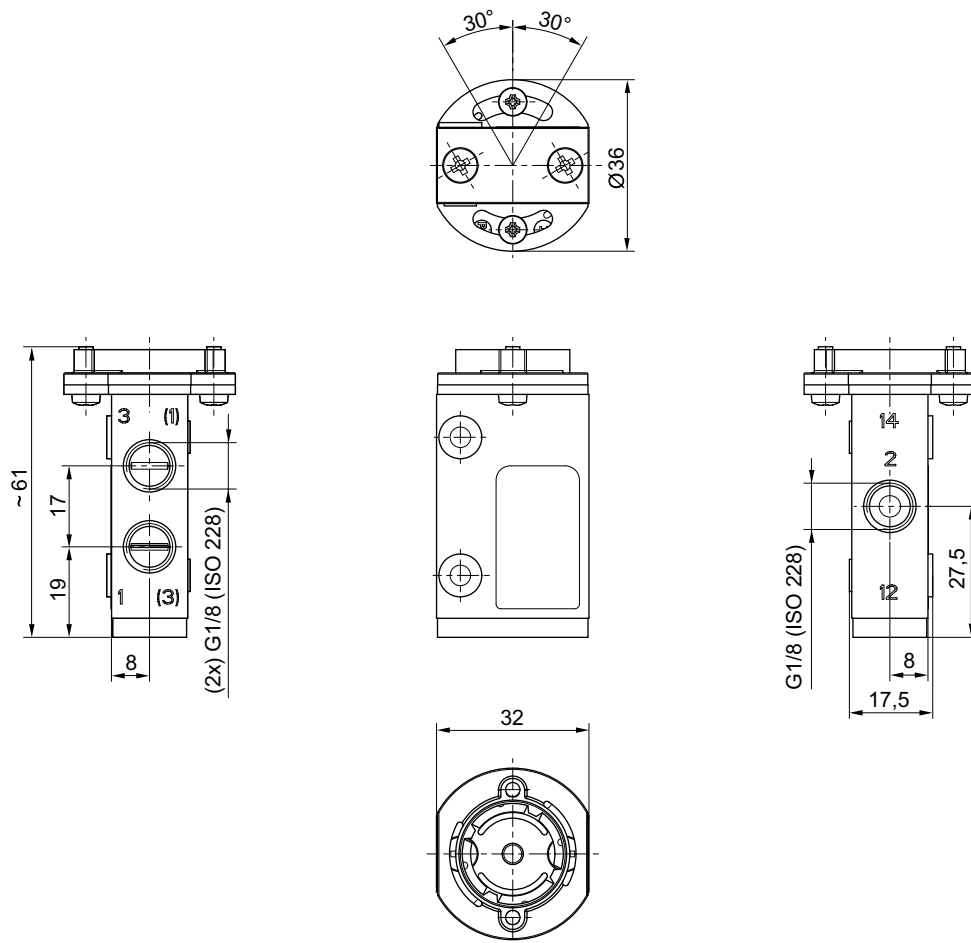
Dimensions, Fig. 8



00133529

- 1) actuating stroke
- 2) overstroke

Dimensions, Fig. 9

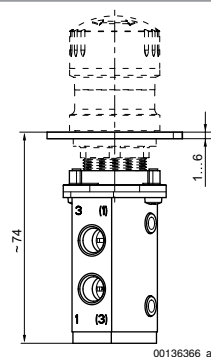


00136366

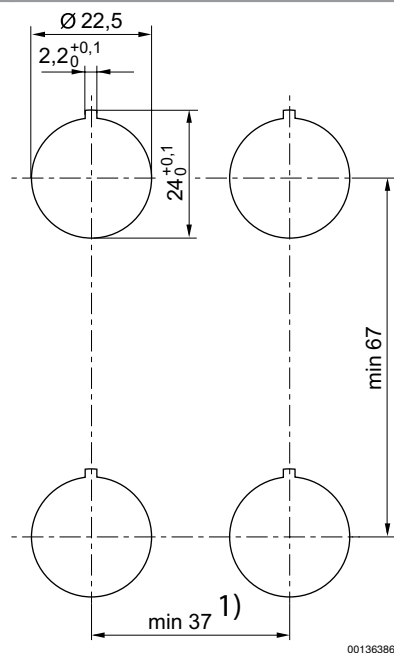
**3/2-directional valve, Series ST**

► With spring return ► Qn= 280 l/min ► pipe connection ► compressed air connection output: G 1/8

Dimensions, Fig. 9, Overview drawing



Dimensions, cut-out in the front plate



angle of approach for 0820402016 and 0820402017

