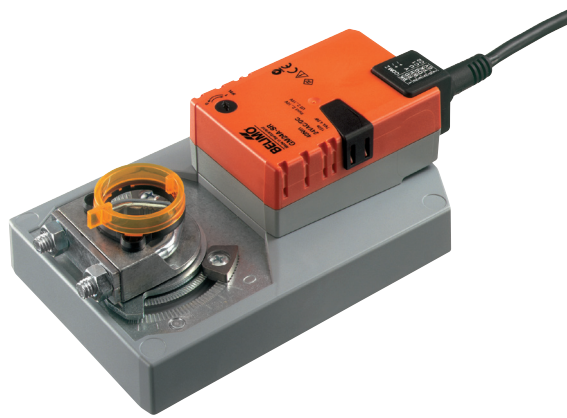


Modulating damper actuator for adjusting dampers in technical building installations

- Air damper size up to approx. 8 m²
- Nominal torque 40 Nm
- Nominal voltage AC/DC 24 V
- Control modulating DC 0 ... 10 V
- Position feedback DC 2...10 V


Technical data

Electrical data	Nominal voltage	AC/DC 24 V
	Nominal voltage frequency	50/60 Hz
	Nominal voltage range	AC 19.2...28.8 V / DC 19.2...28.8 V
	Power consumption in operation	4.5 W
	Power consumption at rest	2 W
	Power consumption for wire sizing	6.5 VA
	Sensor element	Cable 1 m, 4 x 0.75 mm ²
Functional data	Torque motor	min. 40 Nm
	Control positioning signal Y	DC 0...10 V
	Control positioning signal Y note	Typical input impedance 100 kΩ
	Control operating range	DC 2...10 V
	Position feedback (measuring voltage U)	DC 2...10 V
	Position feedback measuring voltage U note	Max. 1 mA
	Position accuracy	±5%
	Direction of rotation motor	Can be selected with switch 0/1
	Running direction	Y = 0 V: At switch position 0 (counter-clockwise rotation) / 1 (clockwise rotation)
	Manual override	Gear disengagement with push-button, can be locked
	Angle of rotation	max. 95°
	Running time motor	150 s / 90°
	Sound power level motor max.	45 dB(A)
	Spindle driver	Universal spindle clamp reversible 12...26 mm
Position indication	Mechanical, pluggable	
Safety	Protection class IEC/EN	III Safety extra-low voltage
	Protection class UL	UL Class 2 Supply
	Degree of protection IEC/EN	IP54 in all mounting positions
	Degree of protection NEMA/UL	NEMA 2, UL Enclosure Type 2
	Electromagnetic compatibility	CE according to 89/336/EC
	Certification IEC/EN	Certified to IEC/EN 60730-1 and IEC/EN 60730-2-14
	Certification UL	cULus according to UL 60730-1A, UL 60730-2-14 and CAN/CSA E60730-1:02
	Mode of operation	Type 1
	Rated current voltage motor	0.8 kV
	Control pollution degree	3
	Ambient temperature	-30...50 °C
Non-operating temperature	-40...80 °C	
Ambient humidity	95% r.h., non-condensing	
Maintenance	Maintenance-free	
Weight	Weight approx.	1.7 kg

Safety notes


- The actuator is not allowed to be used outside the specified field of application, especially not in aircraft or in any other airborne means of transport.

Safety notes

- Only authorised specialists may carry out installation. All applicable legal or institutional installation regulations must be complied during installation.
- The device may only be opened at the manufacturer's site. It does not contain any parts that can be replaced or repaired by the user.
- The cables must not be removed from the device.
- When calculating the torque required, the specifications supplied by the damper manufacturers (cross-section, construction, place of installation), and the ventilation conditions must be observed.
- The device contains electrical and electronic components and is not allowed to be disposed of as household refuse. All locally valid regulations and requirements must be observed.

Product features

Mode of operation	The actuator is connected with a standard modulating signal of DC 0 ... 10V and travels to the position defined by the positioning signal. Measuring voltage U serves for the electrical display of the damper position 0 ... 100% and as slave control signal for other actuators.
Direct mounting	Simple direct mounting on the damper spindle with a universal spindle clamp, supplied with a universal mounting bracket to prevent the actuator from rotating.
Manual override	Manual override with push-button possible (the gear is disengaged for as long as the button is pressed or remains locked).
High functional reliability	The actuator is overload-proof, requires no limit switches and automatically stops when the end stop is reached.
Adjustable angle of rotation	Adjustable angle of rotation with mechanical end stops.

Accessories

	Description	Type
Electrical accessories	Auxiliary switch, add-on, 1 x SPDT	S1A
	Auxiliary switch, add-on, 2 x SPDT	S2A
	Feedback potentiometer 140 Ohm, add-on	P140A
	Feedback potentiometer 200 Ohm, add-on	P200A
	Feedback potentiometer 500 Ohm, add-on	P500A
	Feedback potentiometer 1 kOhm, add-on	P1000A
	Feedback potentiometer 2.8 kOhm, add-on	P2800A
	Feedback potentiometer 5 kOhm, add-on	P5000A
	Feedback potentiometer 10 kOhm, add-on	P10000A
	Range controller for wall mounting, adjustable electron. Min./max. angle of rotation limitation	SBG24
	Positioner for wall mounting, range 0...100%	SGA24
	Positioner for front-panel mounting, range 0...100%	SGF24
	Positioner in a conduit box, range 0...100%	SGE24
	Positioner for wall mounting, range 0...100%	CRP24-B1
	Signal converter voltage/current, supply AC/DC 24V	Z-UIC
Digital position indicator for front-panel mounting, 0...99%, front mass 72 x 72 mm	ZAD24	
Mechanical accessories	Actuator arm, for standard spindle clamp (reversible) K-SA	AH-GMA
	Mounting kit for linkage operation, GM..A	ZG-GMA
	Base plate extension from GM..A to GM..	Z-GMA
	Straight ball joint with M8, suitable for damper crank arms KH8	KG10A
	Damper crank arm, for damper spindles	KH10

Electrical installation

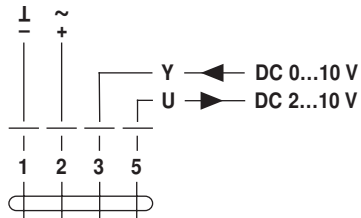


Notes

- Connection via safety isolating transformer.
- Parallel connection of other actuators possible. Observe the performance data.

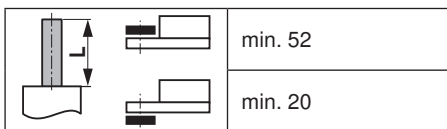
Wiring diagrams

AC/DC 24 V, modulating



Cable colours:
 1 = black
 2 = red
 3 = white
 5 = orange

Dimensions [mm]



Clamping ranges

	12...22	12...18
	22...26.7	12...18

Dimensional drawings

