

Air preparation unit, 2-part, Series AS2-ACC

- G 1/4 G 3/8
- filter porosity 5 µm
- lockable
- for padlocks
- with pressure gauge
- suitable for ATEX



Version	2-part, Can be assembled into blocks
Parts	Shut-off valve, Filter pressure regulator, Pressure gauge, Silencer, Mountings
Mounting orientation	vertical
Working pressure min./max.	1.5 ... 16 bar
Ambient temperature min./max.	-10 ... 50 °C
Medium temperature min./max.	-10 ... 50 °C
Medium	Compressed air Neutral gases
Regulator type	Diaphragm-type pressure regulator
Regulator function	with relieving air exhaust
Adjustment range min./max.	0.5 ... 8 bar
Pressure supply	single
Filter reservoir volume	28 cm ³
Filter element	exchangeable
Weight	See table below

Technical data

Part No.	Port	filter porosity	Condensate drain	Pressure gauge
R412027667	G 1/4	5 µm	semi-automatic, open without pressure	with pressure gauge
R412027669	G 1/4	5 µm	fully automatic, open without pressure	with pressure gauge
R412027670	G 3/8	5 µm	semi-automatic, open without pressure	with pressure gauge

Part No.	Weight	Fig.
R412027667	1.25 kg	Fig. 1
R412027669	1.3 kg	Fig. 2
R412027670	1.3 kg	Fig. 3

Technical information

The pressure dew point must be at least 15 °C under ambient and medium temperature and may not exceed 3 °C .

Note: Polycarbonate reservoirs are susceptible to solvents, supplementary information can be found at "Customer information".

Suitable for use in Ex zones 1, 2, 21, 22.

A change in the flow direction (from air supply on the left to air supply on the right) occurs by rotating installation by 180° about the vertical axis. Please see the operating instructions for further details.

Also suitable for separation of fluid oil or water due to the design.

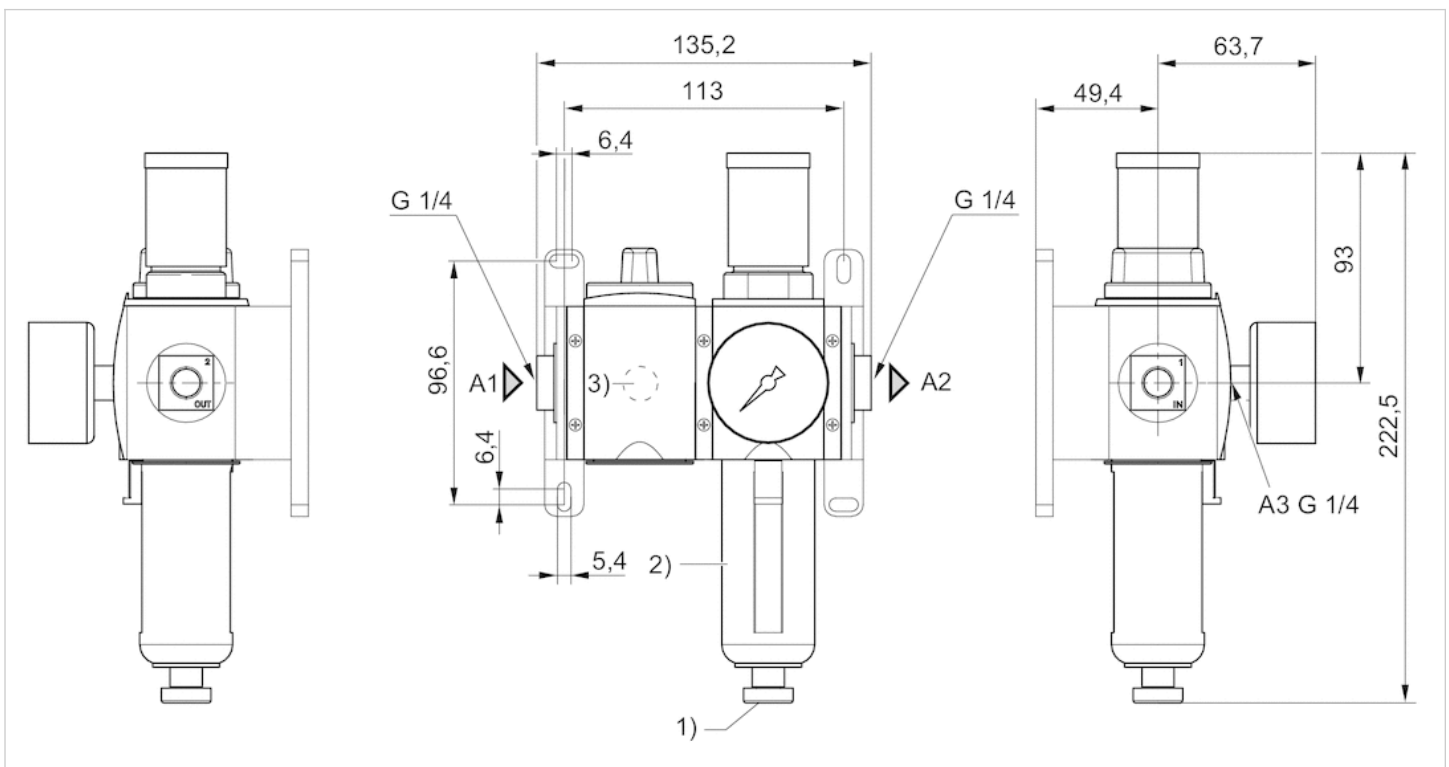
Max. achievable compressed air class acc. to ISO 8573-1:2010 6 : 7 : -

Technical information

Material	
Housing	Polyamide
Front plate	Acrylonitrile butadiene styrene
Seals	Acrylonitrile butadiene rubber
Threaded bushing	Die cast zinc
Reservoir	Polycarbonate
Protective guard	Polyamide
Filter insert	Polyethylene

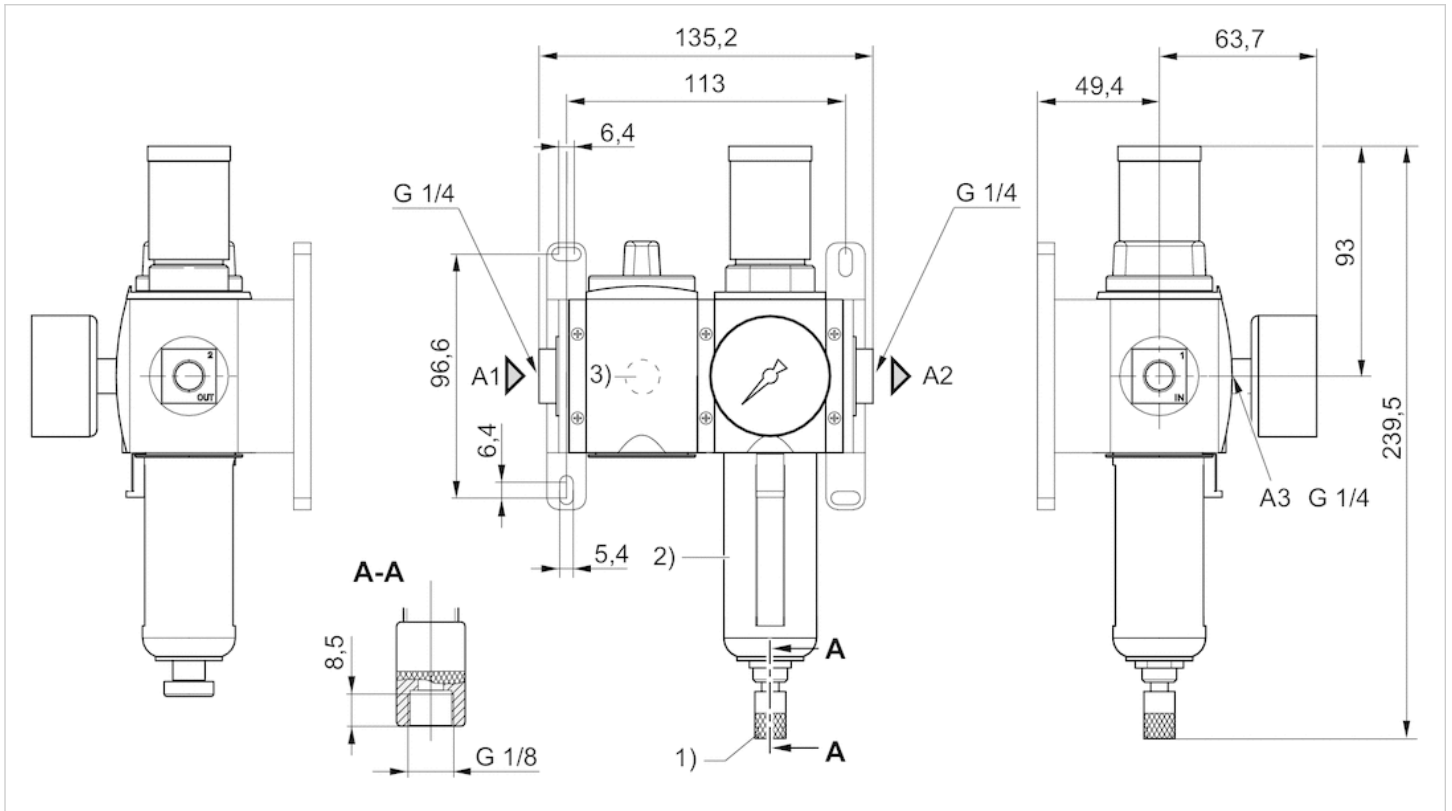
Dimensions

Dimensions in mm, Fig. 1



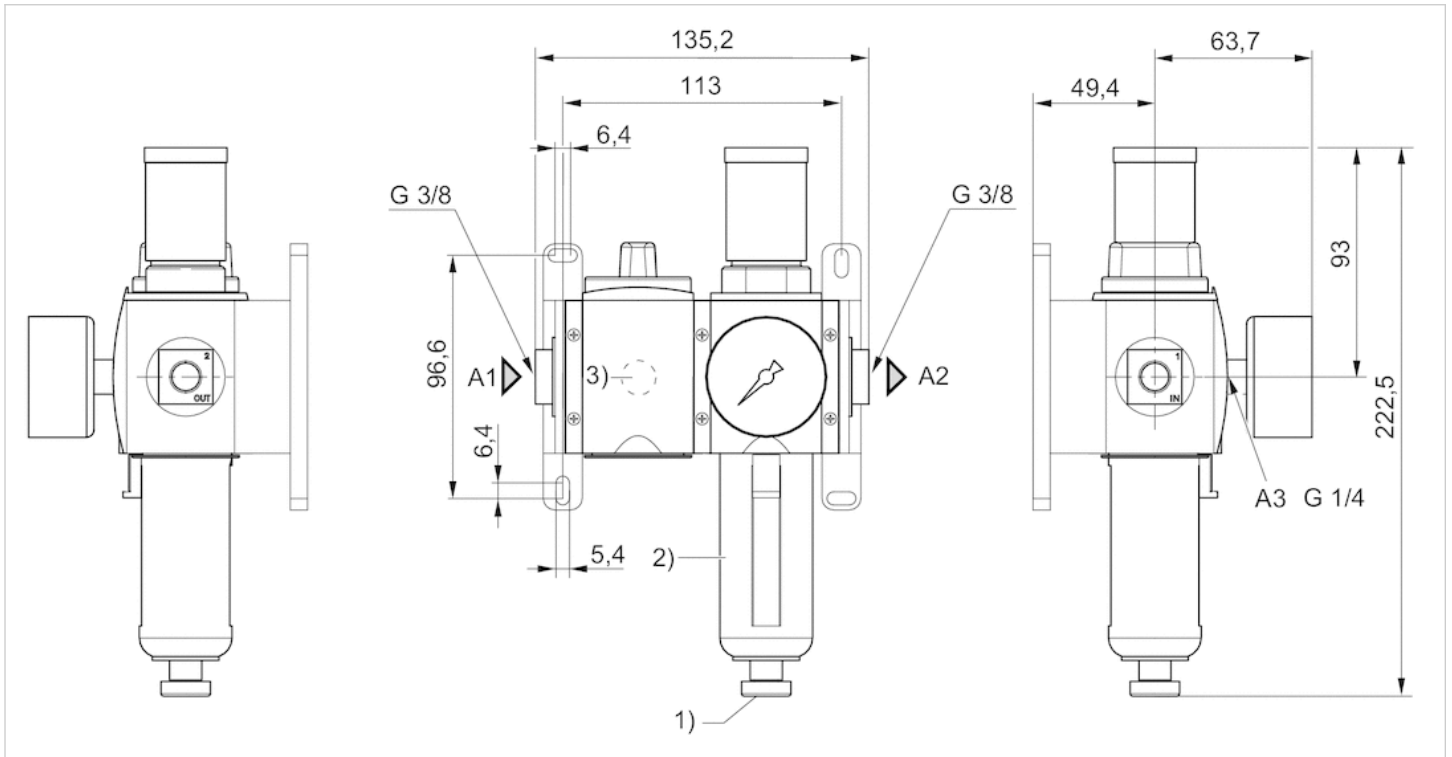
- A1 = input
- A2 = output
- A3 = pressure gauge connection
- 1) Semi-automatic condensate drain
- 2) Plastic reservoir and protective guard with window
- 3) Silencer

Dimensions in mm, Fig. 2



- A1 = input
- A2 = output
- A3 = pressure gauge connection
- A7 = condensate drain
- 1) Fully automatic condensate drain
- 2) Plastic reservoir and protective guard with window
- 3) Silencer

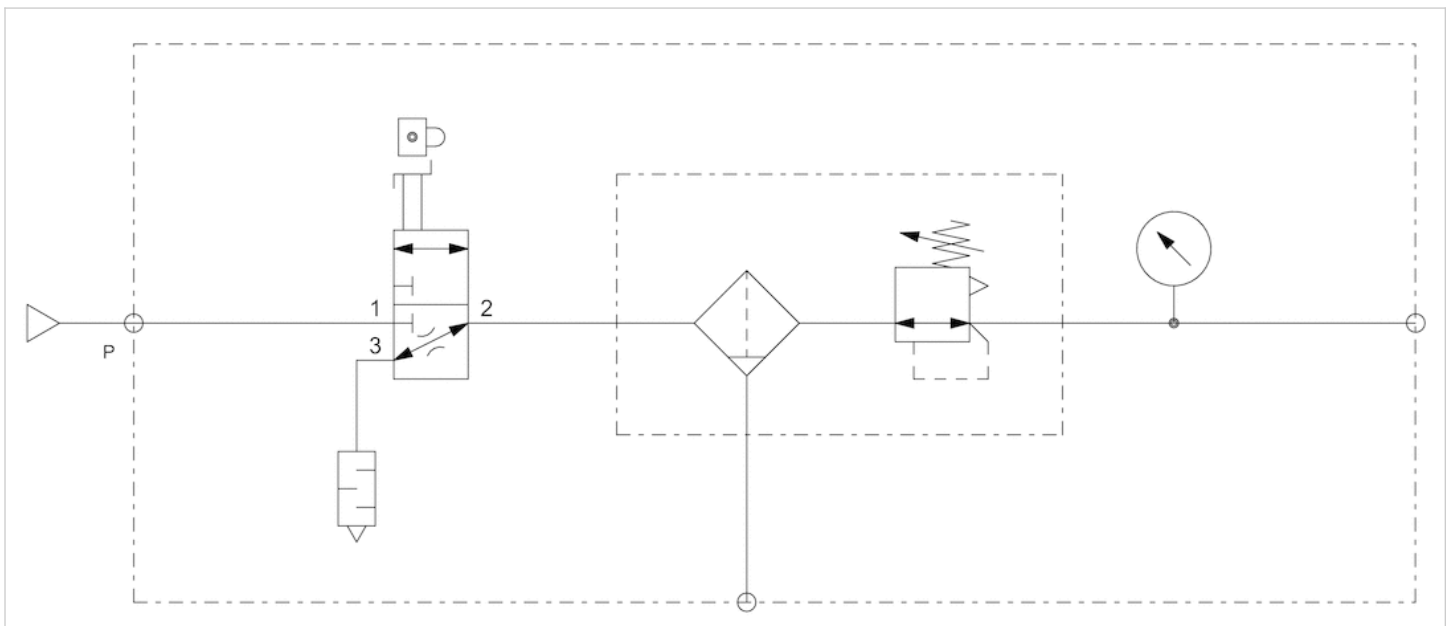
Dimensions in mm, Fig. 3



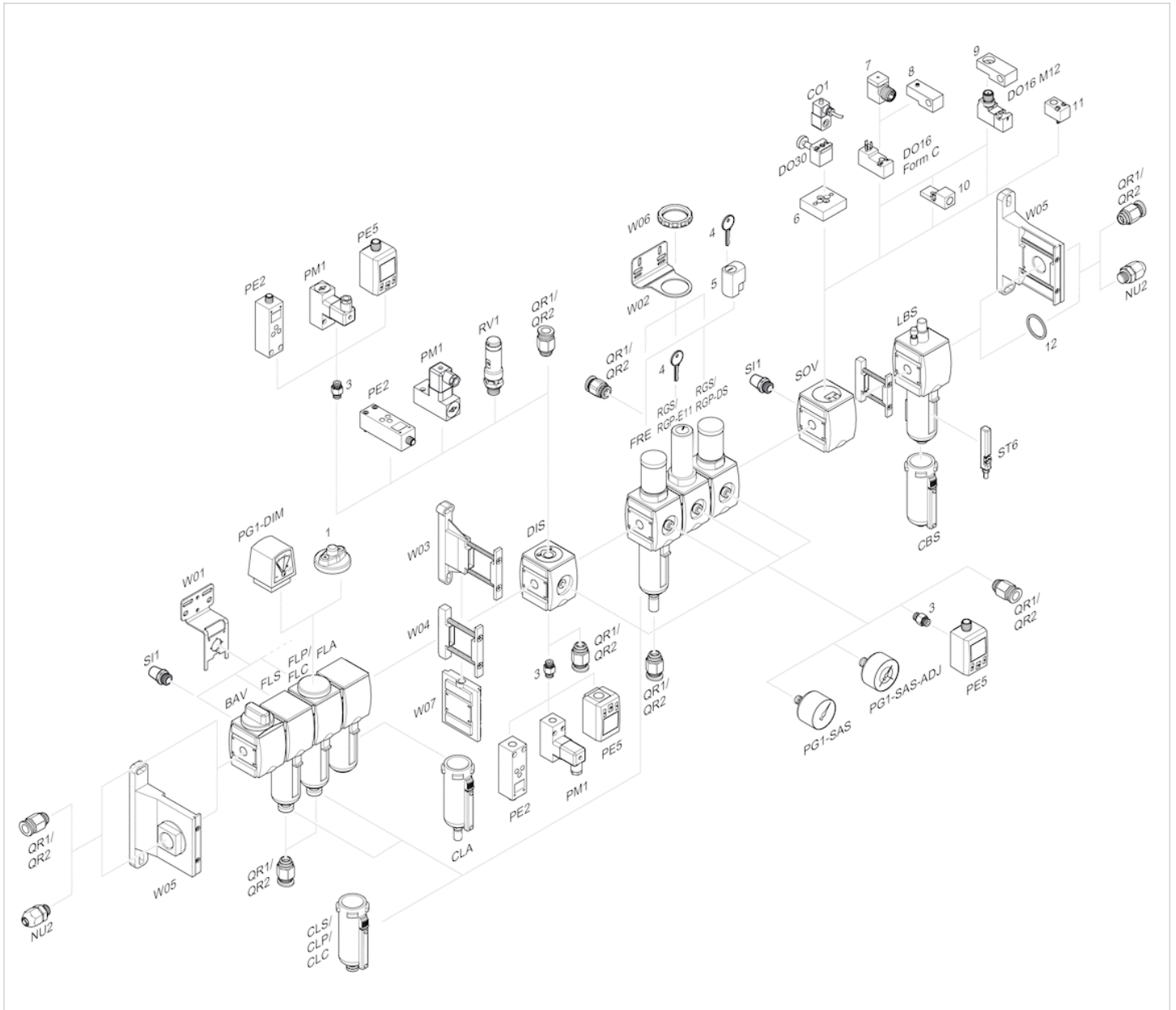
- A1 = input
- A2 = output
- A3 = pressure gauge connection
- 1) Semi-automatic condensate drain
- 2) Plastic reservoir and protective guard with window
- 3) Silencer

Circuit diagram

Block diagram



Accessories overview



- 1 = contamination display
- 3 = Double nipple
- 4 = Key for E11 locking
- 5 = mortise lock
- 6 = Transition plate DO30
- 7 = Adapter, Series CON-VP
- 8 = Mounting aid DO16, form C
- 9 = Mounting aid DO16, M12
- 10 = Adapter for external pilot air
- 11 = Adapter pneumatic operation
- 12 = Sealing ring

Air preparation unit, 2-part, Series AS2-ACC

- filter porosity 5 µm
- lockable
- for padlocks
- with pressure gauge
- suitable for ATEX



Version	2-part, Can be assembled into blocks
Parts	Shut-off valve, Filter pressure regulator, Pressure gauge, Silencer, Mountings
Mounting orientation	vertical
Working pressure min./max.	1.5 ... 16 bar
Ambient temperature min./max.	-10 ... 50 °C
Medium temperature min./max.	-10 ... 50 °C
Medium	Compressed air Neutral gases
Regulator type	Diaphragm-type pressure regulator with relieving air exhaust
Regulator function	
Adjustment range min./max.	0.5 ... 8 bar
Pressure supply	single
Filter reservoir volume	28 cm ³
Filter element	exchangeable
Condensate drain	semi-automatic, open without pressure
Weight	0.841 kg

Technical data

Part No.	filter porosity	Condensate drain	Pressure gauge
R412027668	5 µm	semi-automatic, open without pressure	with pressure gauge

Technical information

The pressure dew point must be at least 15 °C under ambient and medium temperature and may not exceed 3 °C .

Note: Polycarbonate reservoirs are susceptible to solvents, supplementary information can be found at "Customer information".

Suitable for use in Ex zones 1, 2, 21, 22.

A change in the flow direction (from air supply on the left to air supply on the right) occurs by rotating installation by 180° about the vertical axis. Please see the operating instructions for further details.

Also suitable for separation of fluid oil or water due to the design.

Max. achievable compressed air class acc. to ISO 8573-1:2010 6 : 7 : -

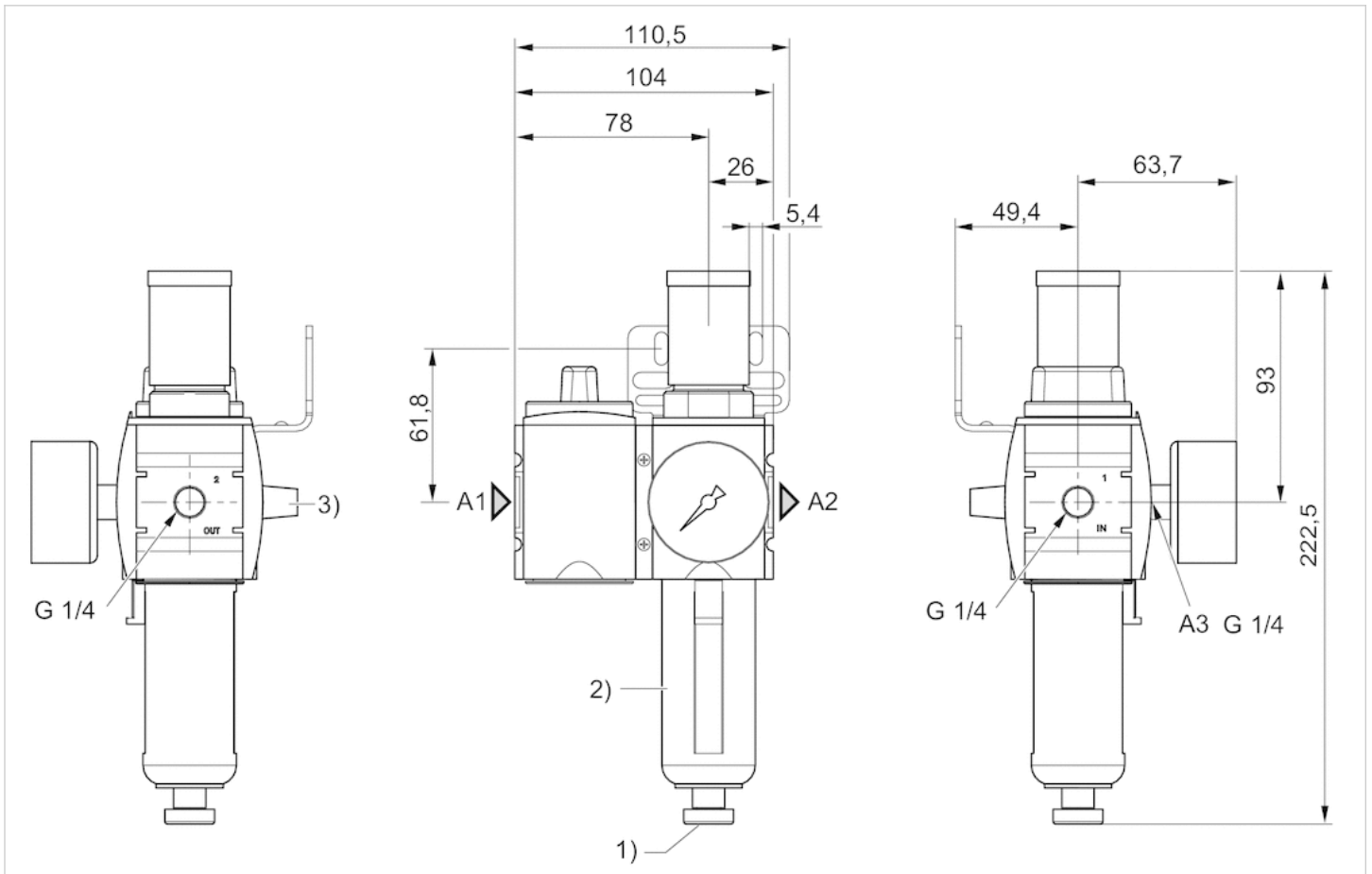
Technical information

Material	
Housing	Polyamide
Front plate	Acrylonitrile butadiene styrene
Seals	Acrylonitrile butadiene rubber
Threaded bushing	Die cast zinc

Material	
Reservoir	Polycarbonate
Protective guard	Polyamide
Filter insert	Polyethylene

Dimensions

Dimensions in mm



A1 = input

A2 = output

A3 = pressure gauge connection

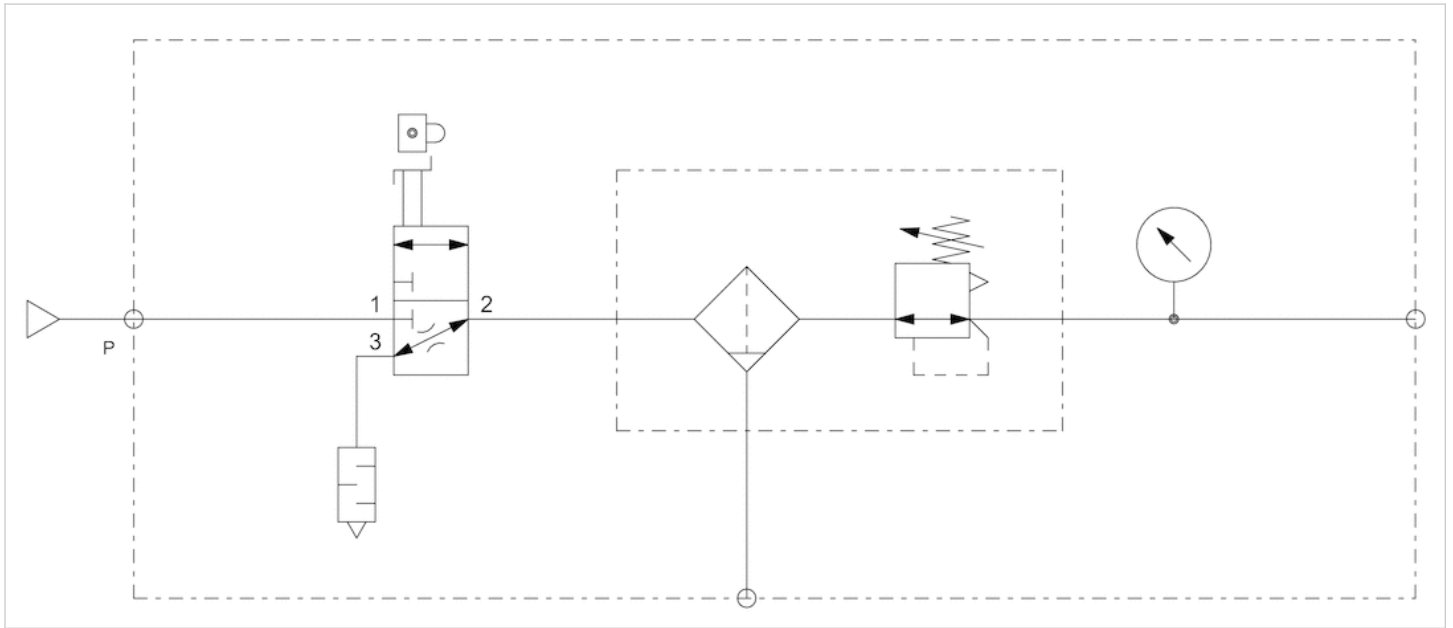
1) semi-automatic condensate drain

2) Plastic reservoir and protective guard with window

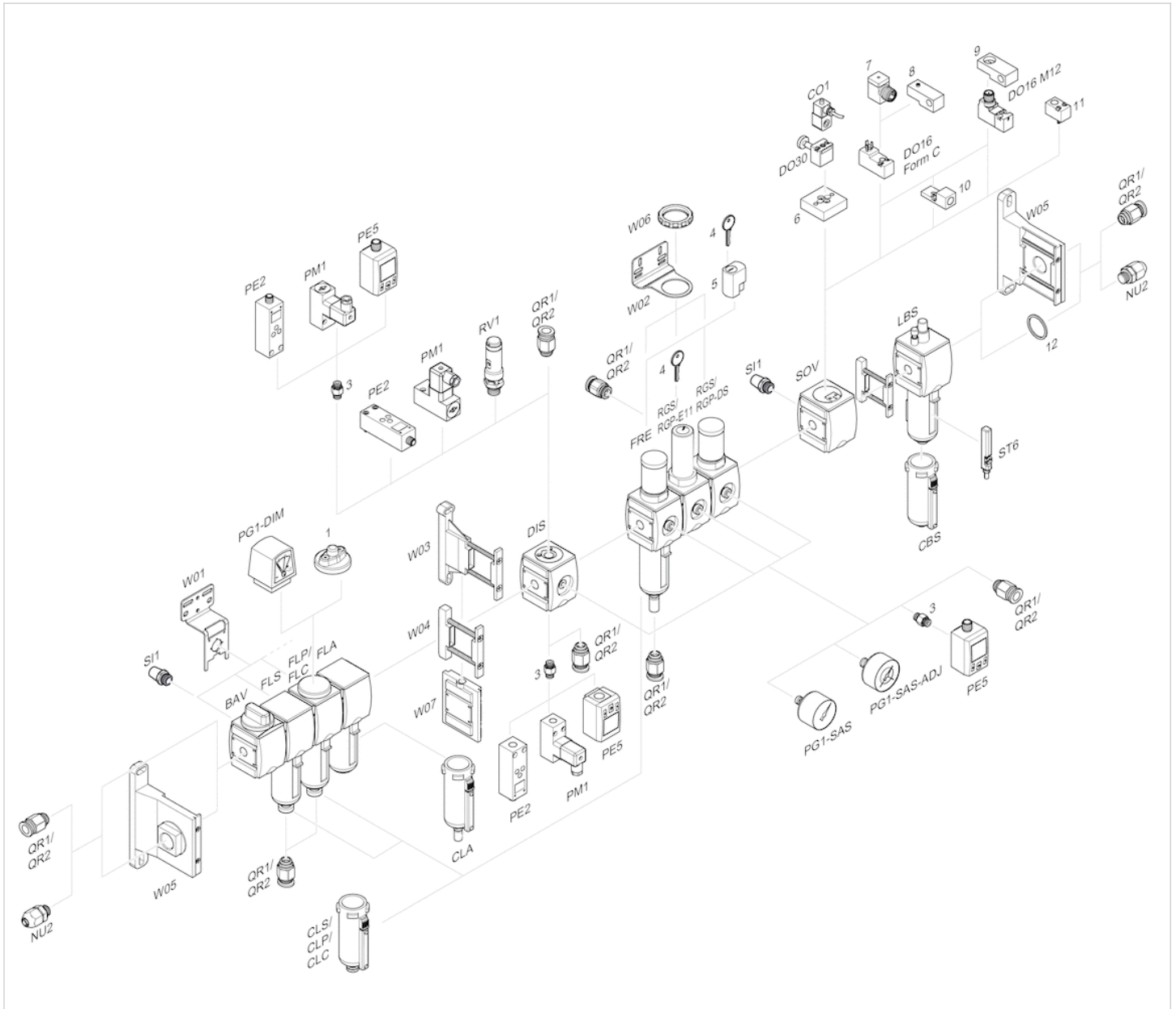
3) Silencer

Circuit diagram

Block diagram



Accessories overview



- 1 = contamination display
- 3 = Double nipple
- 4 = Key for E11 locking
- 5 = mortise lock
- 6 = Transition plate DO30
- 7 = Adapter, Series CON-VP
- 8 = Mounting aid DO16, form C
- 9 = Mounting aid DO16, M12
- 10 = Adapter for external pilot air
- 11 = Adapter pneumatic operation
- 12 = Sealing ring