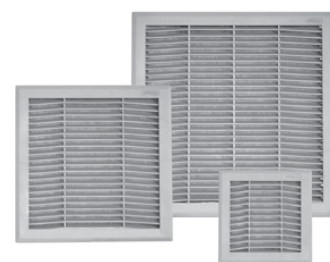




FIL - EXHAUST FILTERS

Part Number (RAL 7035)	Part Number (RAL 7032)	Part Number (Black)	Dimensions (mm) Width x Height x Depth	Used In Conjunction With
FIL08XNOB	FIL08XNOA		114 x 114 x 21 Cut-out 92 x 92	FAN08 Range
FIL12XNOB	FIL12XNOA	FIL12XNOE	150 x 150 x 24 Cut-out 125 x 125	FAN12 Range
FIL25XNOB	FIL25XNOA		250 x 250 x 26 Cut-out 219 x 219	FAN23/FAN25/ FAN28 Range
FIL35XNOB	FIL35XNOA		325 x 325 x 28 Cut-out 292 x 292	FAN35/FAN39/DLK Range
FIL35TXNOB	FIL35TXNOA		325 x 325 x 28 Cut-out 292 x 292	FAN39T Range



FM - REPLACEMENT FILTER MATS

Part Number	Quantity	Used In Conjunction With
FM08	Pack of 10	FAN08 Range
FM12	Pack of 10	FAN12 Range
FM25	Pack of 10	FAN23/FAN25/ FAN28 Range
FM35	Pack of 10	FAN35/FAN39 Range

IP55FC - IP55 FAN COWLS

Part Number (RAL 7035)	Part Number (RAL 7032)	Dimensions (mm) Height x Width x Depth	Used In Conjunction With
IP55FC12B	IP55FC12A	275 x 182 x 53	FAN12/FIL12 Range
IP55FC25B	IP55FC25A	458 x 282 x 75	FAN23/FAN25/FAN28/FIL25 Range
IP55FC35B	IP55FC35A	531 x 358 x 97	FAN35/FAN39/FIL35 Range



DLK/DLR - ROOF MOUNT FANS

Part Number (RAL 7035)	Part Number (RAL 7032)	Power Supply (Voltage)	Free Air Flow Rate Cubic Metres Per Hour	Dimensions (mm) Width x Height x Depth
DLR19XXOB	DLR19XXOA		No Fan Fitted	375 x 122 x 375
DLK19BXOB	DLK19BXOA	(230 1~50-60)	600/625	375 x 122 x 375
DLK19CXOB	DLK19CXOA	(115 1~50-60)	600/625	375 x 122 x 375
DLK22BXOB	DLK22BXOA	(230 1~50-60)	1050/1085	375 x 122 x 375
DLK22CXOB	DLK22CXOA	(115 1~50-60)	1050/1085	375 x 122 x 375
DLK42BXOB	DLK42BXOA	(230 1~50-60)	2300/2530	637 x 315 x 637
DLK45BXOB	DLK45BXOA	(230 1~50-60)	3000/3370	637 x 315 x 637
DLK48BXOB	DLK48BXOA	(230 1~50-60)	4000/4520	637 x 315 x 637



FAN - FILTER FANS

Part Number (RAL 7035)	Part Number (RAL 7032)	Part Number (Black)	Power Supply (Voltage)	Air Flow Rate Cubic Metres Per Hour	Dimensions (mm) Width x Height x Depth	Direction of Airflow
FAN08BNOB	FAN08BNOA		(230 1~50-60)	36/41	114 x 114 x 64 Cut-out 92 x 92	Standard and Reversible
FAN08CNOB	FAN08CNOA		(115 1~50-60)	36/41	114 x 114 x 64 Cut-out 92 x 92	Standard and Reversible
FAN08UNOB	FAN08UNOA		24VDC	44	114 x 114 x 64 Cut-out 92 x 92	Standard and Reversible
FAN08VNOB	FAN08VNOA		48VDC	44	114 x 114 x 64 Cut-out 92 x 92	Standard and Reversible
FAN12BNOB	FAN12BNOA	FAN12BNOE	(230 1~50-60)	57/61	150 x 150 x 67 Cut-out 125 x 125	Standard and Reversible
FAN12CNOB	FAN12CNOA	FAN12CNOE	(115 1~50-60)	57/61	150 x 150 x 67 Cut-out 125 x 125	Standard and Reversible
FAN12JNOB	FAN12JNOA	FAN12JNOE	(24VAC 1~50-60)	57/61	150 x 150 x 67 Cut-out 125 x 125	Standard and Reversible
FAN12UNOB	FAN12UNOA	FAN12UNOE	24VDC	60	150 x 150 x 67 Cut-out 125 x 125	Standard and Reversible
FAN12VNOB	FAN12VNOA	FAN12VNOE	48VDC	60	150 x 150 x 67 Cut-out 125 x 125	Standard and Reversible
FAN23BNOB	FAN23BNOA		(230 1~50-60)	115/125	250 x 250 x 102 Cut-out 219 x 219	Standard and Reversible
FAN23CNOB	FAN23CNOA		(115 1~50-60)	115/125	250 x 250 x 102 Cut-out 219 x 219	Standard and Reversible
FAN23JNOB	FAN23JNOA		(24VAC 1~50-60)	115/125	250 x 250 x 102 Cut-out 219 x 219	Standard and Reversible
FAN23UNOB	FAN23UNOA		24VDC	120	250 x 250 x 102 Cut-out 219 x 219	Standard and Reversible
FAN23VNOB	FAN23VNOA		48VDC	120	250 x 250 x 102 Cut-out 219 x 219	Standard and Reversible
FAN25BNOB	FAN25BNOA		(230 1~50-60)	230/262	250 x 250 x 114 Cut-out 219 x 219	Standard and Reversible
FAN25CNOB	FAN25CNOA		(115 1~50-60)	230/262	250 x 250 x 114 Cut-out 219 x 219	Standard and Reversible
FAN25UNOB	FAN25UNOA		24VDC	230	250 x 250 x 114 Cut-out 219 x 219	Standard and Reversible
FAN25VNOB	FAN25VNOA		48VDC	230	250 x 250 x 114 Cut-out 219 x 219	Standard and Reversible
FAN28BNOB	FAN28BNOA		(230 1~50-60)	400/440	250 x 250 x 98 Cut-out 219 x 219	Standard and Reversible
FAN28CNOB	FAN28CNOA		(115 1~50-60)	400/440	250 x 250 x 98 Cut-out 219 x 219	Standard and Reversible
FAN28LNOB	FAN28LNOA		(400 3~50-60)	400/440	250 x 250 x 98 Cut-out 219 x 219	Standard and Reversible
FAN35BNOB	FAN35BNOA		(230 1~50-60)	520/580	325 x 325 x 153 Cut-out 292 x 292	Standard and Reversible
FAN35CNOB	FAN35CNOA		(115 1~50-60)	520/580	325 x 325 x 153 Cut-out 292 x 292	Standard and Reversible
FAN35LNOB	FAN35LNOA		(400 3~50-60)	520/580	325 x 325 x 153 Cut-out 292 x 292	Standard and Reversible
FAN39BNOB	FAN39BNOA		(230 1~50-60)	920/940	325 x 325 x 118 Cut-out 292 x 292	Standard and Reversible
FAN39CNOB	FAN39CNOA		(115 1~50-60)	920/940	325 x 325 x 118 Cut-out 292 x 292	Standard and Reversible
FAN39TNOB	FAN39TNOA		(230 1~50-60)	965/985	325 x 325 x 118 Cut-out 292 x 292	Standard and Reversible
FAN39TCNOB	FAN39TCNOA		(115 1~50-60)	965/985	325 x 325 x 118 Cut-out 292 x 292	Standard and Reversible



WID - ANTI-CONDENSATION HEATERS

Part Number	Description Manufacturer TEXA	Used in Conjunction With
WID 01 ZXOX	10W 110-250V AC/DC ANTICONDENSATE HEATER	AAWTC 10 / NCT
WID 02 ZXOX	20W 110-250V AC/DC ANTICONDENSATE HEATER	AAWTC 10 / NCT
WID 03 ZXOX	30W 110-250V AC/DC ANTICONDENSATE HEATER	AAWTC 10 / NCT
WID 05 ZXOX	45W 110-250V AC/DC ANTICONDENSATE HEATER	AAWTC 10 / NCT
WID 10 ZXOX	100W 110-250V AC/DC ANTICONDENSATE HEATER	AAWTC 10 / NCT
WID 15 ZXOX	150W 110-250V AC/DC ANTICONDENSATE HEATER	AAWTC 10 / NCT
WID 05 ZXOP	50W 110-250V AC/DC ANTI-CONDENSATION HEATER	AAWTC 10 / NCT
WID 10 ZXOP	100W 110-250V AC/DC ANTI-CONDENSATION HEATER	AAWTC 10 / NCT
WID 15 ZXOP	150W 110-250V AC/DC ANTI-CONDENSATION HEATER	AAWTC 10 / NCT
WID 10 BLOC	100W 230V 50-60Hz FANNED ANTI- CONDENSATE HEATER	AAWTC 10 / NCT
WID 15 BLOC	150W 230V 50-60Hz FANNED ANTI-CONDENSATE HEATER	AAWTC 10 / NCT
WID 20 BLOC	200W 230V 50-60Hz FANNED ANTI-CONDENSATE HEATER	AAWTC 10 / NCT
WID 30 BLOC	300W 230V 50-60Hz FANNED ANTI-CONDENSATE HEATER	AAWTC 10 / NCT
WID 40 BLOC	400W 230V 50-60Hz FANNED ANTI-CONDENSATE HEATER	AAWTC 10 / NCT
WID 35 BLOT	350W 230V 50-60Hz FANNED ANTI-CONDENSATE HEATER WITH THERMOSTAT	AAWTC 10 / NCT
WID 55 BLOT	550W 230V 50-60Hz FANNED ANTI-CONDENSATE HEATER WITH THERMOSTAT	AAWTC 10 / NCT



THERMOSTATS & ACCESSORIES

Part Number	Description Manufacturer TEXA	Used In Conjunction With
AAFTO 12	Normally Open Thermostat	Filter Fans / DLK Range / MIX Range
AAWTC 10	Normally Closed Thermostat	Heaters
AAWTS 10	0-60° C 250AC CHANGEOVER CONTACT	Filter Fans / Heaters
AAWFT 10	MOUNTING SUPPORT FOR THERMOSTATS (5 Pieces)	Thermostats
C16000385	Dual Thermostat	Filter Fans / Heaters / DLK Range



FLY: the new generation of ultra slim cooling units

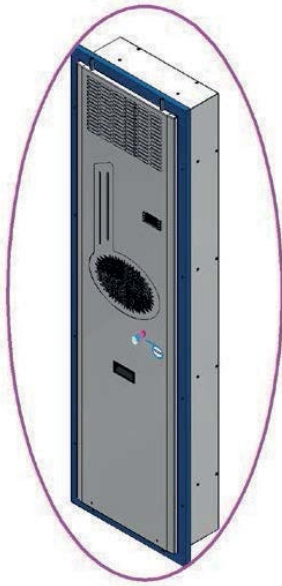
From the **TEXA** research team, working in the industrial cooling sector, we introduce the new, revolutionary and universal assembly system of cooling units to electrical enclosures. One single cut-out template for the whole range. One single assembly frame with **IP55** protection degree for all three assembly types, **External, Semi-Recessed and Recessed**.

Standard features

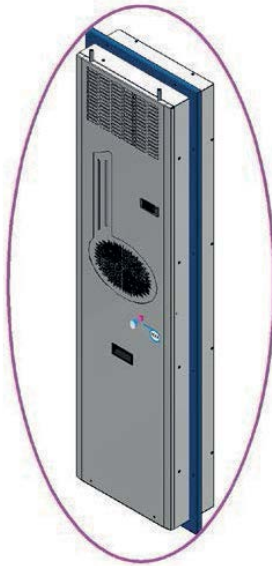
- Maximum security with **IP55** protection degree at enclosure side
- **CE** and **UL** test approvals for all models
- Hydrophilic nano treatment of heat exchanger to guarantee less maintenance and long lasting performances
- Integrated condensation evaporating system
- Ringbolts fitted to all models for **safety** assembly

FLY Smart - flexible - secure





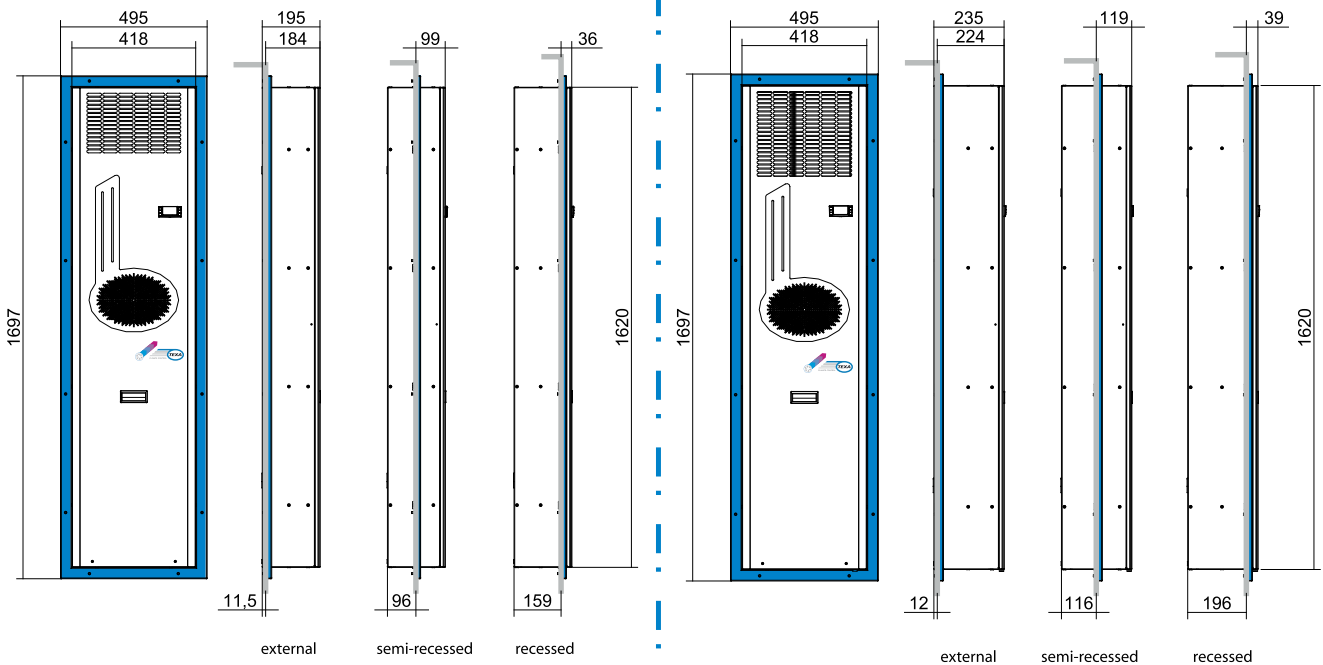
Recessed



Semi-Recessed



External



Model	Cooling power A35-A35	Power supply	Dimensions	Type approval
FLY11BTUB	1100 W	230V ~ 50-60Hz	495 x 1697 x 195	CE; UL
FLY11KTUB	1100 W	400/460V 2~ 50-60Hz	495 x 1697 x 195	CE; UL
FLY15BTUB	1500 W	230V ~ 50-60Hz	495 x 1697 x 195	CE; UL
FLY15KTUB	1500 W	400/460V 2~ 50-60Hz	495 x 1697 x 195	CE; UL
FLY20BTUB	2000 W	230V ~ 50-60Hz	495 x 1697 x 195	CE; UL
FLY20HTUB	2000 W	400V 3~ 50Hz 460V 3~ 60Hz	495 x 1697 x 195	CE; UL
FLY25BTUB	2500 W	230V ~ 50-60Hz	495 x 1697 x 235	CE; UL
FLY25HTUB	2500 W	400V 3~ 50Hz 460V 3~ 60Hz	495 x 1697 x 235	CE; UL
FLY32BTUB	3200 W	230V ~ 50-60Hz	495 x 1697 x 235	CE; UL
FLY32HTUB	3200 W	400V 3~ 50Hz 460V 3~ 60Hz	495 x 1697 x 235	CE; UL

EGO - COOLING UNITS FOR SIDE OR DOOR MOUNTING (INDOOR)

Part Number (RAL 7035)	Part Number (RAL 7032)	Part Number (Stainless Steel)	Power Supply (Voltage A.C)	Cooling Capacity (W) EN814 - A35A35	Cooling Capacity (W) EN814 - A35A50	Dimensions (mm) Width x Height x Depth
EGOS3BT1B	EGOS3BT1A	EGOS3BT19	(230 1~50-60)	300	150	525 x 345 x 136
EGO04BT1B	EGO04BT1A	EGO04BT19	(230 1~50-60)	380	240	285 x 460 x 180
EGO04CT1B	EGO04CT1A	EGO04CT19	(115 1~50-60)	380	240	285 x 460 x 180
EGO06BT1B	EGO06BT1A	EGO06BT19	(230 1~50-60)	640	470	316 x 606 x 212
EGO06CT1B	EGO06CT1A	EGO06CT19	(115 1~50-60)	640	470	316 x 606 x 212 (+42**)
EGO06GT1B	EGO06GT1A	EGO06GT19	(400/440 2~50-60)	640	470	316 x 606 x 212 (+58**)
EGO08BT1B	EGO08BT1A	EGO08BT19	(230 1~50-60)	820	680	348 x 783 x 216
EGO08CT1B	EGO08CT1A	EGO08CT19	(115 1~50-60)	820	680	348 x 783 x 216 (+42**)
EGO08GT1B	EGO08GT1A	EGO08GT19	(400/440 2~50-60)	820	680	348 x 783 x 216 (+58**)
EGO10BT1B	EGO10BT1A	EGO10BT19	(230 1~50-60)	1000	790	348 x 783 x 216
EGO10CT1B	EGO10CT1A	EGO10CT19	(115 1~50-60)	1000	790	348 x 783 x 216 (+42**)
EGO10GT1B	EGO10GT1A	EGO10GT19	(400/440 2~50-60)	1000	790	348 x 783 x 216 (+58**)
EGO12BT1B	EGO12BT1A	EGO12BT19	(230 1~50-60)	1250	910	405 x 999 x 237
EGO12CT1B	EGO12CT1A	EGO12CT19	(115 1~50-60)	1250	910	405 x 999 x 237
EGO12GT1B	EGO12GT1A	EGO12GT19	(400/440 2~50-60)	1250	910	405 x 999 x 237
EGO16BT1B	EGO16BT1A	EGO16BT19	(230 1~50-60)	1600	1230	405 x 999 x 237
EGO16CT1B	EGO16CT1A	EGO16CT19	(115 1~50-60)	1600	1230	405 x 999 x 237
EGO16GT1B	EGO16GT1A	EGO16GT19	(400/440 2~50-60)	1600	1230	405 x 999 x 237
EGO20BT1B	EGO20BT1A	EGO20BT19	(230 1~50-60)	2000	1510	405 x 999 x 237
EGO20CT1B	EGO20CT1A	EGO20CT19	(115 1~50-60)	2000	1510	405 x 999 x 237
EGO20LT1B	EGO20LT1A	EGO20LT19	(400 3~50-60)	2000	1510	405 x 999 x 237
EGO30BT1B	EGO30BT1A	EGO30BT19	(230 1~50-60)	2900	2250	500 x 1270 x 336
EGO30LT1B	EGO30LT1A	EGO30LT19	(400 3~50-60)	2900	2250	500 x 1270 x 336
EGO40BT1B	EGO40BT1A	EGO40BT19	(230 1~50-60)	3850	2870	500 x 1270 x 336
EGO40LT1B	EGO40LT1A	EGO40LT19	(400 3~50-60)	3850	2870	500 x 1270 x 336
EGO60MTEB	EGO60MTEA	EGO60MTE9	(400 3~50)	5800	4350	600 x 2000 x 387
EGO60NTEB	EGO60NTEA	EGO60NTE9	(460 3~60)	6050	4530	600 x 2000 x 387
EGO80MTEB	EGO80MTEA	EGO80MTE9	(400 3~50)	7600	5700	800 x 2000 x 387
EGO80NTEB	EGO80NTEA	EGO80NTE9	(460 3~60)	7950	5930	800 x 2000 x 387
EGOA0MTEB	EGOA0MTEA	EGOA0MTE9	(400 3~50)	9400	7000	800 x 2000 x 387
EGOA0NTEB	EGOA0NTEA	EGOA0NTE9	(460 3~60)	9850	7350	800 x 2000 x 387
EGOA5MTEB	EGOA5MTEA	EGOA5MTE9	(400 3~50)	14800	11300	800 x 2000 x 550
EGOA5NTEB	EGOA5NTEA	EGOA5NTE9	(460 3~60)	15150	11600	800 x 2000 x 550



** Depth increases due to external mounting of the autotransformer

All EGO units have an Electronic Thermostat fitted as standard.

EGO units from EGO04 to EGO40 are available in External Mounted and Semi - Recessed versions.

Other colours available upon request

EMO - COOLING UNITS FOR SIDE OR DOOR MOUNTING (OUTDOOR)

Part Number (RAL 7035)	Part Number (RAL 7032)	Part Number (Stainless Steel)	Power Supply (Voltage A.C)	Cooling Capacity (W) EN814 - A35A35	Cooling Capacity (W) EN814 - A35A50	Dimensions (mm) Width x Height x Depth
EMO04BT1B	EMO04BT1A	EMO04BT19	(230 1~50-60)	380	240	300 x 572 x 205
EMO04CT1B	EMO04CT1A	EMO04CT19	(115 1~50-60)	380	240	300 x 572 x 205 (+35**)
EMO06BT1B	EMO06BT1A	EMO06BT19	(230 1~50-60)	640	470	331 x 718 x 235
EMO06CT1B	EMO06CT1A	EMO06CT19	(115 1~50-60)	640	470	331 x 718 x 235 (+42**)
EMO06GT1B	EMO06GT1A	EMO06GT19	(400/440 2~50-60)	640	470	331 x 718 x 235 (+58**)
EMO08BT1B	EMO08BT1A	EMO08BT19	(230 1~50-60)	820	680	363 x 895 x 239
EMO08CT1B	EMO08CT1A	EMO08CT19	(115 1~50-60)	820	680	363 x 895 x 239 (+42**)
EMO08GT1B	EMO08GT1A	EMO08GT19	(400/440 2~50-60)	820	680	363 x 895 x 239 (+58**)
EMO10BT1B	EMO10BT1A	EMO10BT19	(230 1~50-60)	1000	790	363 x 895 x 239
EMO10CT1B	EMO10CT1A	EMO10CT19	(115 1~50-60)	1000	790	363 x 895 x 239 (+42**)
EMO10GT1B	EMO10GT1A	EMO10GT19	(400/440 2~50-60)	1000	790	363 x 895 x 239 (+58**)
EMO12BT1B	EMO12BT1A	EMO12BT19	(230 1~50-60)	1250	910	415 x 1109 x 261
EMO12CT1B	EMO12CT1A	EMO12CT19	(115 1~50-60)	1250	910	415 x 1109 x 261
EMO12GT1B	EMO12GT1A	EMO12GT19	(400/440 2~50-60)	1250	910	415 x 1109 x 261
EMO16BT1B	EMO16BT1A	EMO16BT19	(230 1~50-60)	1600	1230	415 x 1109 x 261
EMO16CT1B	EMO16CT1A	EMO16CT19	(115 1~50-60)	1600	1230	415 x 1109 x 261
EMO16GT1B	EMO16GT1A	EMO16GT19	(400/440 2~50-60)	1600	1230	415 x 1109 x 261
EMO20BT1B	EMO20BT1A	EMO20BT19	(230 1~50-60)	2000	1510	415 x 1109 x 261
EMO20CT1B	EMO20CT1A	EMO20CT19	(115 1~50-60)	2000	1510	415 x 1109 x 261
EMO20LT1B	EMO20LT1A	EMO20LT19	(400 3~50-60)	2000	1510	415 x 1109 x 261
EMO30BT1B	EMO30BT1A	EMO30BT19	(230 1~50-60)	2900	2250	512 x 1417 x 365
EMO30LT1B	EMO30LT1A	EMO30LT19	(400 3~50-60)	2900	2250	512 x 1417 x 365
EMO40BT1B	EMO40BT1A	EMO40BT19	(230 1~50-60)	3850	2870	512 x 1417 x 365
EMO40LT1B	EMO40LT1A	EMO40LT19	(400 3~50-60)	3850	2870	512 x 1417 x 365
EMO60MTEB	EMO60MTEA	EMO60MTE9	(400 3~50)	5800	4350	600 x 2000 x 387
EMO60NTEB	EMO60NTEA	EMO60NTE9	(460 3~60)	6050	4530	600 x 2000 x 387
EMO80MTEB	EMO80MTEA	EMO80MTE9	(400 3~50)	7600	5700	800 x 2000 x 387
EMO80NTEB	EMO80NTEA	EMO80NTE9	(460 3~60)	7950	5930	800 x 2000 x 387
EMOA0MTEB	EMOA0MTEA	EMOA0MTE9	(400 3~50)	9400	7000	800 x 2000 x 387
EMOA0NTEB	EMOA0NTEA	EMOA0NTE9	(460 3~60)	9850	7350	800 x 2000 x 387



** Depth increases due to external mounting of the autotransformer
All EMO units have a Mechanical Thermostat fitted as standard.

Other colours available upon request

DEK - COOLING UNITS FOR ROOF MOUNTING (INDOOR)

Part Number (RAL 7035)	Part Number (RAL 7032)	Part Number (Stainless Steel)	Power Supply (Voltage A.C)	Cooling Capacity (W) EN814 - A35A35	Cooling Capacity (W) EN814 - A35A50	Dimensions (mm) Width x Height x Depth
DEK04BTOB	DEK04BTOA	DEK04BTO9	(230 1~50-60)	410	240	259 x 260 x 481
DEK04CTOB	DEK04CTOA	DEK04CTO9	(115 1~50-60)	410	240	259 x 260 x 481
DEK08BTOB	DEK08BTOA	DEK08BTO9	(230 1~50-60)	820	680	341 x 339 x 600
DEK08CTOB	DEK08CTOA	DEK08CTO9	(115 1~50-60)	820	680	341 x 339 x 600
DEK08GTOB	DEK08GTOA	DEK08GTO9	(400/440 2~50-60)	820	680	341 x 339 x 600
DEK12BTOB	DEK12BTOA	DEK12BTO9	(230 1~50-60)	1150	900	401 x 415 x 572
DEK12CTOB	DEK12CTOA	DEK12CTO9	(115 1~50-60)	1150	900	401 x 415 x 572
DEK12GTOB	DEK12GTOA	DEK12GTO9	(400/440 2~50-60)	1150	900	401 x 415 x 572
DEK15BTOB	DEK15BTOA	DEK15BTO9	(230 1~50-60)	1550	1200	401 x 415 x 572
DEK15CTOB	DEK15CTOA	DEK15CTO9	(115 1~50-60)	1550	1200	401 x 415 x 572
DEK15GTOB	DEK15GTOA	DEK15GTO9	(400/440 2~50-60)	1550	1200	401 x 415 x 572
DEK20BTOB	DEK20BTOA	DEK20BTO9	(230 1~50-60)	2050	1560	401 x 415 x 572
DEK20CTOB	DEK20CTOA	DEK20CTO9	(115 1~50-60)	2050	1560	401 x 415 x 572
DEK20LTOB	DEK20LTOA	DEK20LTO9	(400 3~50-60)	2050	1560	401 x 415 x 572
DEK30BTOB	DEK30BTOA	DEK30BTO9	(230 1~50-60)	2900	2250	492 x 496 x 784
DEK30LTOB	DEK30LTOA	DEK30LTO9	(400 3~50-60)	2900	2250	492 x 496 x 784
DEK40BTOB	DEK40BTOA	DEK40BTO9	(230 1~50-60)	3850	2870	492 x 496 x 784
DEK40LTOB	DEK40LTOA	DEK40LTO9	(400 3~50-60)	3850	2870	492 x 496 x 784

All DEK units have an Electronic Thermostat fitted as standard.

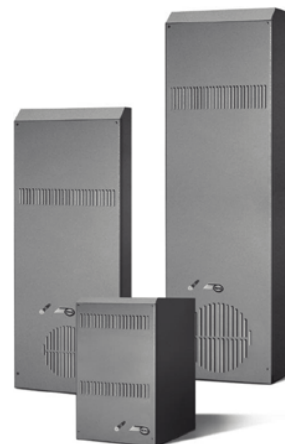
Other colours available upon request



MIX - AIR-AIR HEAT EXCHANGERS

Part Number (RAL 7035)	Part Number (RAL 7032)	Part Number (Stainless Steel)	Power Supply (Voltage)	Specific Cooling Power W/K	Dimensions (mm) Width x Height x Depth	Direction of Airflow
MIX14BXOB	MIX14BXOA	MIX14BXO9	(230 1~50-60)	14	188 x 363 x 165	Standard and Reversible
MIX14CXOB	MIX14CXOA	MIX14CXO9	(115 1~50-60)	14	188 x 363 x 165	Standard and Reversible
MIX36BXOB	MIX36BXOA	MIX36BXO9	(230 1~50-60)	36	316 x 771 x 93	Standard and Reversible
MIX36CXOB	MIX36CXOA	MIX36CXO9	(115 1~50-60)	36	316 x 771 x 93	Standard and Reversible
MIX50BXOB	MIX50BXOA	MIX50BXO9	(230 1~50-60)	50	316 x 771 x 93	Standard and Reversible
MIX50CXOB	MIX50CXOA	MIX50CXO9	(115 1~50-60)	50	316 x 771 x 93	Standard and Reversible
MIX80BXOB	MIX80BXOA	MIX80BXO9	(230 1~50-60)	80	317 x 1260 x 108	Standard and Reversible
MIX80CXOB	MIX80CXOA	MIX80CXO9	(115 1~50-60)	80	317 x 1260 x 108	Standard and Reversible

Other colours available upon request



BLU/BIT - AIR WATER HEAT EXCHANGERS

Part Number (RAL 7035)	Part Number (RAL 7032)	Part Number (Stainless Steel)	Power Supply (Voltage)	Cooling Capacity (W) W10A35	Dimensions (mm) Width x Height x Depth
BIT25BXOB	BIT25BXOA	BIT25BXO9	(230 1~50-60)	2500	400 x 270 x 540
BIT25CXOB	BIT25CXOA	BIT25CXO9	(115 1~50-60)	2500	400 x 270 x 540
BLU10BXOB	BLU10BXOA	BLU10BXO9	(230 1~50-60)	1000	311 x 453 x 115
BLU10CXOB	BLU10CXOA	BLU10CXO9	(115 1~50-60)	1000	311 x 453 x 115
BLU18BXOB	BLU18BXOA	BLU18BXO9	(230 1~50-60)	1750	398 x 901 x 137
BLU18CXOB	BLU18CXOA	BLU18CXO9	(115 1~50-60)	1750	398 x 901 x 137
BLU25BXOB	BLU25BXOA	BLU25BXO9	(230 1~50-60)	2500	398 x 901 x 137
BLU25CXOB	BLU25CXOA	BLU25CXO9	(115 1~50-60)	2500	398 x 901 x 137
BLU35BXOB	BLU35BXOA	BLU35BXO9	(230 1~50-60)	3500	398 x 1148 x 163
BLU35CXOB	BLU35CXOA	BLU35CXO9	(115 1~50-60)	3500	398 x 1148 x 163
BLU45BXOB	BLU45BXOA	BLU45BXO9	(230 1~50-60)	4500	398 x 1148 x 163
BLU45CXOB	BLU45CXOA	BLU45CXO9	(115 1~50-60)	4500	398 x 1148 x 163
BLU60BXOB	BLU60BXOA	BLU60BXO9	(230 1~50-60)	6000	450 x 1502 x 163
BLU60CXOB	BLU60CXOA	BLU60CXO9	(115 1~50-60)	6000	450 x 1502 x 163
BLU60GXOB	BLU60GXOA	BLU60GXO9	(400/440 2~50-60)	6000	450 x 1502 x 163
BLUA0BXOB	BLUA0BXOA	BLUA0BXO9	(230 1~50-60)	10000	797 x 1935 x 206
BLUA0GXOB	BLUA0GXOA	BLUA0GXO9	(400/440 2~50-60)	10000	797 x 1935 x 206
BLUA5BXOB	BLUA5BXOA	BLUA5BXO9	(230 1~50-60)	15000	797 x 1935 x 206
BLUA5GXOB	BLUA5GXOA	BLUA5GXO9	(400/440 2~50-60)	15000	797 x 1935 x 206

Other colours available upon request



LED PANEL LIGHTS

AALGT10

LED-lamp with magnetic fixing

The AALGT10 led-lamp is suitable for all types of panels and enclosures, especially where space is limited.

The magnetic fixing, the integrated power unit, the input and output snap-lock connectors make the installation flexible, quick and safe.

It is possible to connect in series up to 10 lamps. The led technology ensure a longer service life of the lamps.

Characteristics	M.U.	AALGT10
Operating voltage	V - Hz	100-240 V AC, 50/60 Hz (min. 90 V AC, max. 265 V AC)
Power consumption	W	Max. 5
Luminosity	Lm	290 Lm a 120° (870Lm at 360° or equivalent 75W light bulb)
Lamp type	-	LED, angle of radiation 120°
Service life	h	60.000 h a +20 °C (+68 °F)
Connection	-	2-pole connector with snap lock AC: max. 2,5 A / 240 V AC, color: white
Mounting	-	magnet fixing
Casing	-	Plastic, transparent
Dimensions	mm	351 x 34 x 32
Weight	kg	0.2
Operating temperature	°C - °F	-30 °C ... +60 °C (-22 °F ... +140 °F)
Storage temperature	°C - °F	-40 °C ... +85 °C (-40 °F ... +185 °F)
Operating / Storage humidity	% RH	max. 90% RH (non-condensing)
Protection type/Protection class	IP	IP20 / II (double insulated)

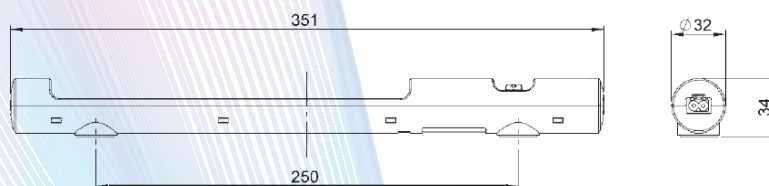


Female connector
For power supply cable.



Male connector
Only for daisy chain connection (max. 10 lamps).

LED-lamp
AALGT10



All information could be subjected to modifications without any previous notice.

For Product Selection Go To www.texaclimatecontrol.com