



CONTACTOR, AC-3 30 KW/400 V, AC 110 V,  
50 HZ, 3-POLE, SIZE S3, SCREW CONNECTION

General details:		
Product brand name		SIRIUS
product designation		power contactor
Size of the contactor		S3
Protection class IP / on the front		IP20
Degree of pollution		3
Installation altitude / at a height over sea level / maximum	m	2,000
Ambient temperature / during operating	°C	-25 ... 60
Active power loss / per conductor / typical	W	4.6
Item designation		
<ul style="list-style-type: none"> <li>• according to DIN EN 61346-2</li> </ul>		Q
<ul style="list-style-type: none"> <li>• according to DIN 40719 extendable after IEC 204-2 / according to IEC 750</li> </ul>		K
Mechanical operating cycles as operating time		
<ul style="list-style-type: none"> <li>• of the contactor / typical</li> </ul>		10,000,000
<ul style="list-style-type: none"> <li>• of the contactor with added auxiliary switch block / typical</li> </ul>		10,000,000
<ul style="list-style-type: none"> <li>• of the contactor with added electronics-compatible auxiliary switch block / typical</li> </ul>		5,000,000
Main circuit:		
Number of poles / for main current circuit		3

<b>Number of NC contacts / for main contacts</b>		0
<b>Number of NO contacts / for main contacts</b>		3
<b>Operating current / at AC-1 / at 400 V / at 40 °C ambient temperature / rated value</b>	A	100
<b>Operating current / at AC-1 / at 400 V / at 60 °C ambient temperature / rated value</b>	A	90
<b>Operating current</b>		
• at AC-3 / at 400 V / rated value	A	65
• with 1 current path		
• at DC-1		
• at 24 V / rated value	A	90
• at 110 V / rated value	A	4.5
• at DC-3 / at DC-5		
• at 24 V / rated value	A	40
• at 110 V / rated value	A	2.5
• with 2 current paths in series		
• at DC-1		
• at 24 V / rated value	A	90
• at 110 V / rated value	A	90
• at DC-3 / at DC-5		
• at 24 V / rated value	A	90
• at 110 V / rated value	A	90
• with 3 current paths in series		
• at DC-1		
• at 24 V / rated value	A	90
• at 110 V / rated value	A	90
• at DC-3 / at DC-5		
• at 24 V / rated value	A	90
• at 110 V / rated value	A	90
<b>Service power</b>		
• at AC-1 / at 400 V / rated value	kW	59
• at AC-2 / at 400 V / rated value	kW	30
• at AC-3		
• at 400 V / rated value	kW	30
• at 500 V / rated value	kW	37
• at 690 V / rated value	kW	45
<b>Control circuit:</b>		
<b>Design of activation</b>		conventional
<b>Type of voltage / of the controlled supply voltage</b>		AC
<b>Control supply voltage frequency</b>		

• 1 / rated value	Hz	50
<b>Control supply voltage / 1</b>		
• at 50 Hz / for AC		
• rated value	V	110

#### Auxiliary circuit:

<b>Contact reliability / of the auxiliary contacts</b>		1 faulty switching per 100 million (17 V, 1 mA)
<b>Number of NC contacts / for auxiliary contacts</b>		
• instantaneous switching		0
• lagging switching		0
<b>Number of NO contacts / for auxiliary contacts</b>		
• instantaneous switching		0
• leading switching		0
<b>Operating current / of the auxiliary contacts</b>		
• at AC-12 / maximum	A	10
• at AC-15		
• at 230 V	A	6
• at 400 V	A	3
• at DC-12		
• at 60 V	A	6
• at 110 V	A	3
• at 220 V	A	1
• at DC-13		
• at 24 V	A	10
• at 60 V	A	2
• at 110 V	A	1
• at 220 V	A	0.3

#### Short-circuit:

<b>Design of the fuse link</b>		
• for short-circuit protection of the auxiliary switch / required		fuse gL/gG: 10 A
• for short-circuit protection of the main circuit		
• with type of assignment 1 / required		fuse gL/gG: 250 A
• at type of coordination 2 / required		fuse gL/gG: 125 A

#### Installation/mounting/dimensions:




<b>Type of mounting</b>		screw and snap-on mounting onto 35 mm and 75 mm standard mounting rail
<b>series installation</b>		Yes
<b>Width</b>	mm	70
<b>Height</b>	mm	146

Depth	mm	139
Distance, to be maintained, to earthed part / sideways	mm	6

**Connection type:**

<b>Design of the electrical connection</b>		
<ul style="list-style-type: none"> <li>• for main current circuit</li> <li>• for auxiliary and control current circuit</li> </ul>		screw-type terminals screw-type terminals

**Certificates/approvals:**

<b>General Product Approval</b>	<b>Functional Safety / Safety of Machinery</b>	<b>Test Certificates</b>
 CQC  CSA <a href="#">ROSTEST</a>  UL	<a href="#">SUVA</a>	<a href="#">Manufacturer</a>

**Shipping Approval**

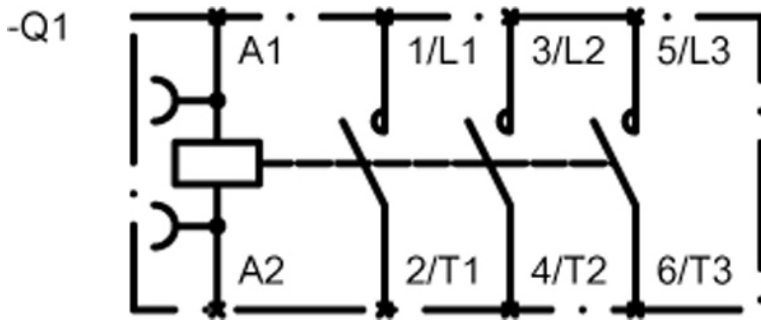
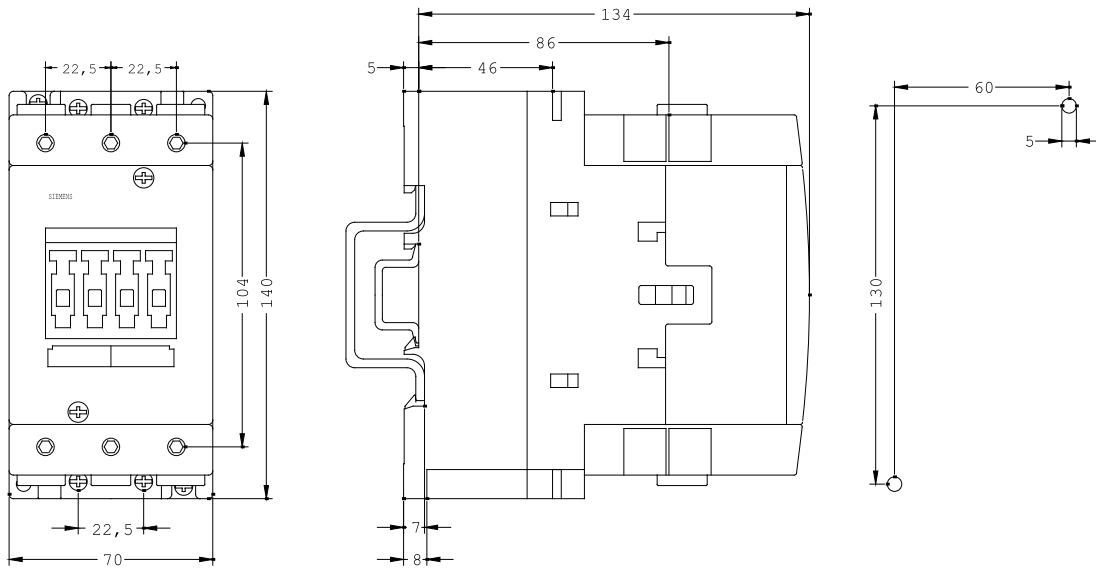
 ABS  BUREAU VERITAS  GL  LRS  RINA  RMRS
---

**other**

<a href="#">Manufacturer</a> <a href="#">other</a>
--

**Further information:**

<b>Information- and Downloadcenter (Catalogs, Brochures,...)</b> <a href="http://www.siemens.com/industrial-controls/catalogs">http://www.siemens.com/industrial-controls/catalogs</a>
<b>Industry Mall (Online ordering system)</b> <a href="http://www.siemens.com/industrial-controls/mall">http://www.siemens.com/industrial-controls/mall</a>
<b>CAX-Online-Generator</b> <a href="http://www.siemens.com/cax">http://www.siemens.com/cax</a>
<b>Service&amp;Support (Manuals, Certificates, Characteristics, FAQs,...)</b> <a href="http://support.automation.siemens.com/WWW/view/en/3RT1044-1AF00/all">http://support.automation.siemens.com/WWW/view/en/3RT1044-1AF00/all</a>
<b>Image database (product images, 2D dimension drawings, 3D models, device circuit diagrams, ...)</b> <a href="http://www.automation.siemens.com/bilddb/cax_en.aspx?mlfb=3RT1044-1AF00">http://www.automation.siemens.com/bilddb/cax_en.aspx?mlfb=3RT1044-1AF00</a>



last change:

Sep 30, 2011