



2/2 way solenoid valve with servo diaphragm

Diagram 93

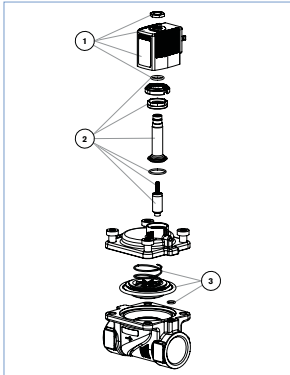
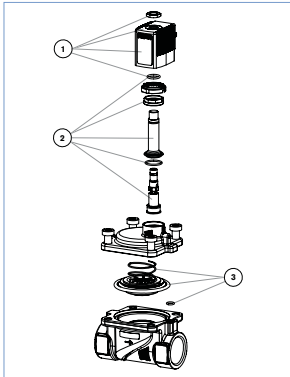


Diagram 94



Ordering Chart

Article No. Complete unit	Diagram no.	Pos. 1 Spool set Order no.	Pos. 2 Plug set Order no.	Pos. 3 Consumable parts Order no.	Order / Material		
221841	93	126434	240C 8 W	210513	WWA NBR Br	224329	DN13 NBR
221842	93	645596	2406 8 W	210513	WWA NBR Br	224329	DN13 NBR
221843	93	645596	23056 8 W	210513	WWA NBR Br	224329	DN13 NBR
221844	93	126434	240C 8 W	210513	WWA NBR Br	224329	DN13 NBR
221845	93	645596	2406 8 W	210513	WWA NBR Br	224329	DN13 NBR
221846	93	645596	23056 8 W	210513	WWA NBR Br	224329	DN13 NBR
221847	93	126434	240C 8 W	210513	WWA NBR Br	224329	DN13 NBR
221848	93	645596	2406 8 W	210513	WWA NBR Br	224329	DN13 NBR
221849	93	645596	23056 8 W	210513	WWA NBR Br	224329	DN13 NBR
221850	93	126434	240C 8 W	210513	WWA NBR Br	224329	DN13 NBR
221851	93	645596	2406 8 W	210513	WWA NBR Br	224329	DN25 NBR
221852	93	645596	23056 8 W	210513	WWA NBR Br	224329	DN25 NBR
221853	93	126434	240C 8 W	210513	WWA NBR Br	224329	DN25 NBR
221854	93	645596	2406 8 W	210513	WWA NBR Br	224329	DN25 NBR
221855	93	645596	23056 8 W	210513	WWA NBR Br	224329	DN25 NBR
221856	93	126434	240C 8 W	210513	WWA NBR Br	224329	DN25 NBR
221857	93	645596	2406 8 W	210513	WWA NBR Br	224332	DN25 NBR
221858	93	645596	23056 8 W	210513	WWA NBR Br	224332	DN25 NBR
221859	93	126434	240C 8 W	210513	WWA NBR Br	224332	DN25 NBR
221860	93	645596	2406 8 W	210513	WWA NBR Br	224332	DN25 NBR
221861	93	645596	23056 8 W	210513	WWA NBR Br	224332	DN25 NBR
221862	93	126434	240C 8 W	210513	WWA NBR Br	224332	DN25 NBR
221863	93	645596	2406 8 W	210513	WWA NBR Br	224335	DN40 NBR
221864	93	645596	23056 8 W	210513	WWA NBR Br	224335	DN40 NBR
221865	93	126434	240C 8 W	210513	WWA NBR Br	224335	DN40 NBR
221866	93	645596	2406 8 W	210513	WWA NBR Br	224335	DN40 NBR
221867	93	645596	23056 8 W	210513	WWA NBR Br	224335	DN40 NBR
221868	93	645596	2406 8 W	210514	WWA FKM Br	224326	DN13 FKM
221869	93	645596	2406 8 W	210514	WWA FKM Br	224326	DN13 FKM
221870	93	645596	23056 8 W	210514	WWA FKM Br	224326	DN13 FKM
221871	93	645596	2406 8 W	210514	WWA FKM Br	224326	DN13 FKM
221872	93	645596	2406 8 W	210514	WWA FKM Br	224326	DN13 FKM
221873	93	645596	23056 8 W	210514	WWA FKM Br	224326	DN13 FKM
221874	93	645596	2406 8 W	210514	WWA FKM Br	224326	DN13 FKM
221875	93	645596	2406 8 W	210514	WWA FKM Br	224326	DN13 FKM
221876	93	647360	23056 8 W	210514	WWA FKM Br	224326	DN13 FKM
221877	93	647360	2406 8 W	210514	WWA FKM Br	224329	DN25 FKM
221878	93	645596	2406 8 W	210514	WWA FKM Br	224329	DN25 FKM
221879	93	647360	23056 8 W	210514	WWA FKM Br	224329	DN25 FKM
221880	93	647360	2406 8 W	210514	WWA FKM Br	224329	DN25 FKM
221881	93	647360	23056 8 W	210514	WWA FKM Br	224329	DN25 FKM
221882	93	647360	2406 8 W	210514	WWA FKM Br	224329	DN25 FKM
221883	93	647360	2406 8 W	210514	WWA FKM Br	224333	DN25 FKM
221884	93	646837	2406 8 W	210514	WWA FKM Br	224333	DN25 FKM
221885	93	647360	23056 8 W	210514	WWA FKM Br	224333	DN25 FKM
221886	93	647360	2406 8 W	210514	WWA FKM Br	224333	DN25 FKM
221887	93	646837	2406 8 W	210514	WWA FKM Br	224333	DN25 FKM
221888	93	647360	23056 8 W	210514	WWA FKM Br	224333	DN25 FKM
221889	93	647360	2406 8 W	210514	WWA FKM Br	224336	DN40 FKM
221890	93	646837	2406 8 W	210514	WWA FKM Br	224336	DN40 FKM
221891	93	647360	23056 8 W	210514	WWA FKM Br	224336	DN40 FKM
221892	93	646837	2406 8 W	210514	WWA FKM Br	224336	DN40 FKM
221893	93	647360	23056 8 W	210514	WWA FKM Br	224336	DN40 FKM
221894	93	646837	2406 8 W	210514	WWA FKM Br	224336	DN40 FKM
221895	93	126434	240C 8 W	210515	WWA EPDM Br	224327	DN13 EPDM
221896	93	645596	2406 8 W	210515	WWA EPDM Br	224327	DN13 EPDM
221897	93	645596	23056 8 W	210515	WWA EPDM Br	224327	DN13 EPDM
221898	93	126434	240C 8 W	210515	WWA EPDM Br	224327	DN13 EPDM
221899	93	645596	2406 8 W	210515	WWA EPDM Br	224327	DN13 EPDM
221900	93	645596	23056 8 W	210515	WWA EPDM Br	224327	DN13 EPDM

Ordering Chart

Article No. Complete unit	Diagram no.	Pos. 1 Spool set Order no.	Pos. 2 Plug set Order no.	Pos. 3 Consumable parts Order no.	Order / Material		
221901	93	126434	240C 8 W	210515	WWA EPDM Br	224327	DN13 EPDM
221902	93	645596	2406 8 W	210515	WWA EPDM Br	224327	DN13 EPDM
221903	93	645596	23056 8 W	210515	WWA EPDM Br	224327	DN13 EPDM
221904	93	126434	240C 8 W	210515	WWA EPDM Br	224327	DN20 EPDM
221905	93	645596	2406 8 W	210515	WWA EPDM Br	224331	DN20 EPDM
221906	93	645596	23056 8 W	210515	WWA EPDM Br	224331	DN20 EPDM
221907	93	126434	240C 8 W	210515	WWA EPDM Br	224331	DN20 EPDM
221908	93	645596	2406 8 W	210515	WWA EPDM Br	224331	DN20 EPDM
221909	93	645596	23056 8 W	210515	WWA EPDM Br	224331	DN20 EPDM
221910	93	126434	240C 8 W	210515	WWA EPDM Br	224334	DN25 EPDM
221911	93	645596	2406 8 W	210515	WWA EPDM Br	224334	DN25 EPDM
221912	93	645596	23056 8 W	210515	WWA EPDM Br	224334	DN25 EPDM
221913	93	126434	240C 8 W	210515	WWA EPDM Br	224334	DN25 EPDM
221914	93	645596	2406 8 W	210515	WWA EPDM Br	224337	DN40 EPDM
221915	93	645596	23056 8 W	210515	WWA EPDM Br	224337	DN40 EPDM
221916	93	126434	240C 8 W	210515	WWA EPDM Br	224337	DN40 EPDM
221917	93	645596	2406 8 W	210515	WWA EPDM Br	224337	DN40 EPDM
221918	93	645596	23056 8 W	210515	WWA EPDM Br	224337	DN40 EPDM
221919	93	126434	240C 8 W	210515	WWA EPDM Br	224337	DN40 EPDM
221920	93	645596	2406 8 W	210515	WWA EPDM Br	224337	DN40 EPDM
221921	93	645596	23056 8 W	210515	WWA EPDM Br	224337	DN40 EPDM
221922	94	646743	240C 8 W	210516	WWB FKM-NBR Br	224325	DN13 NBR
221923	94	189226	240C 8 W	210516	WWB FKM-NBR Br	224325	DN13 NBR
221924	94	189226	240C 8 W	210516	WWB FKM-NBR Br	224325	DN13 NBR
221925	94	189226	23050 7 W	210516	WWB FKM-NBR Br	224325	DN13 NBR
221926	94	646743	240C 8 W	210516	WWB FKM-NBR Br	224325	DN13 NBR
221927	94	189226	240C 8 W	210516	WWB FKM-NBR Br	224325	DN13 NBR
221928	94	189226	23050 7 W	210516	WWB FKM-NBR Br	224325	DN13 NBR
221929	94	646743	240C 8 W	210516	WWB FKM-NBR Br	224325	DN13 NBR
221930	94	189226	240C 8 W	210516	WWB FKM-NBR Br	224325	DN13 NBR
221931	94	189226	240C 8 W	210516	WWB FKM-NBR Br	224325	DN13 NBR
221932	94	189226	23050 7 W	210516	WWB FKM-NBR Br	224325	DN13 NBR
221933	94	189226	240C 8 W	210516	WWB FKM-NBR Br	224325	DN13 NBR
221934	94	646743	240C 8 W	210516	WWB FKM-NBR Br	224325	DN13 NBR
221935	94	189226	240C 8 W	210516	WWB FKM-NBR Br	224325	DN13 NBR
221936	94	189226	23050 7 W	210516	WWB FKM-NBR Br	224325	DN13 NBR
221937	94	646743	240C 8 W	210516	WWB FKM-NBR Br	224325	DN13 NBR
221938	94	189226	240C 8 W	210516	WWB FKM-NBR Br	224325	DN13 NBR
221939	94	189226	23050 7 W	210516	WWB FKM-NBR Br	224325	DN13 NBR
221940	94	646743	240C 8 W	210516	WWB FKM-NBR Br	224325	DN13 NBR
221941	94	189226	240C 8 W	210516	WWB FKM-NBR Br	224325	DN13 NBR
221942	94	189226	23050 7 W	210516	WWB FKM-NBR Br	224325	DN13 NBR
221943	94	646743	240C 8 W	210516	WWB FKM-NBR Br	224325	DN13 NBR
221944	94	189226	240C 8 W	210516	WWB FKM-NBR Br	224325	DN13 NBR
221945	94	189226	23050 7 W	210516	WWB FKM-NBR Br	224325	DN13 NBR
221946	94	646743	240C 8 W	210516	WWB FKM-NBR Br	224325	DN13 NBR
221947	94	189226	240C 8 W	210516	WWB FKM-NBR Br	224325	DN13 NBR
221948	94	189226	23050 7 W	210516	WWB FKM-NBR Br	224325	DN13 NBR
221949	94	646743	240C 8 W	210516	WWB FKM-NBR Br	224325	DN13 NBR
221950	94	189226	240C 8 W	210516	WWB FKM-NBR Br	224325	DN13 NBR
221951	94	189226	23050 7 W	210516	WWB FKM-NBR Br	224325	DN13 NBR
221952	93	126434	240C 8 W	210517	WWA NBR Br	224325	DN13 NBR
221953	93	645596	23056 8 W	210517	WWA NBR Br	224325	DN13 NBR
221954	93	126434	240C 8 W	210517	WWA NBR Br	224325	DN13 NBR
221955	93	645596	2406 8 W	210517	WWA NBR Br	224325	DN13 NBR
221956	93	645596	23056 8 W	210517	WWA NBR Br	224325	DN13 NBR
221957	93	126434	240C 8 W	210517	WWA NBR Br	224325	DN13 NBR
221958	93	645596	2406 8 W	210517	WWA NBR Br	224325	DN13 NBR
221959	93	645596	23056 8 W	210517	WWA NBR Br	224325	DN13 NBR
221960	93	126434	240C 8 W	210517	WWA NBR Br	224325	DN13 NBR
221961	93	645596	2406 8 W	210517	WWA NBR Br	224325	DN13 NBR
221962	93	645596	23056 8 W	210517	WWA NBR Br	224325	DN13 NBR
221963	93	126434	240C 8 W	210517	WWA NBR Br	224325	DN13 NBR
221964	93	645596	2406 8 W	210517	WWA NBR Br	224325	DN13 NBR

2/2 way solenoid valve with servo diaphragm

