

Panel mounting frames - VS-PPC-F2-MSTB-MNNA-1C-SPSA5 - 1405248


Please be informed that the data shown in this PDF Document is generated from our Online Catalog. Please find the complete data in the user's documentation. Our General Terms of Use for Downloads are valid (<http://phoenixcontact.com/download>)



MSTB panel mounting frame, IP67, for push-pull interlocking, metal, with integrated contact insert for conductor connection, spring-cage connection, 24 V, for round mounting cutout, with seal, without mounting screws



Key Commercial Data

Packing unit	1 pc
GTIN	 4 046356 334808
GTIN	4046356334808
Weight per Piece (excluding packing)	118.200 g
Custom tariff number	85366990
Country of origin	Germany
Sales Key	ABNHBB

Technical data

Mechanical characteristics

Connection method	Spring-cage connection
AWG solid min.	18
AWG solid max.	13
Degree of pollution	2
Locking type	Push Pull
Conductor cross section	0.75 mm ² ... 2.5 mm ²
Weight	118.2 g
Flammability rating according to UL 94	V0

Ambient conditions

Ambient temperature (operation)	-40 °C ... 70 °C
---------------------------------	------------------

Material data

Panel mounting frames - VS-PPC-F2-MSTB-MNNA-1C-SPSA5 - 1405248

Technical data

Material data

Contact surface material	Au/Ni
Housing material	Zinc die-cast
Housing surface material	Nickel-plated
Width	46 mm
Height	50 mm
Length	41.8 mm
Housing material	Zinc die-cast
Housing surface material 1	Cu/Ni

Electrical characteristics

Number of positions	5
Degree of pollution	2
Rated voltage (III/3)	24 V

Standards and Regulations

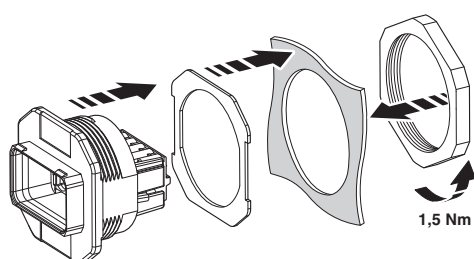
Flammability rating according to UL 94	V0
--	----

Environmental Product Compliance

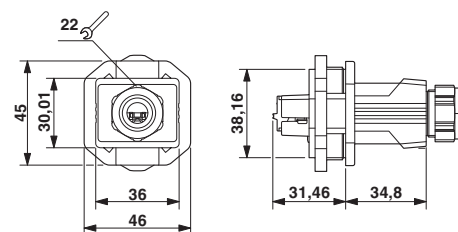
REACH SVHC	Lead 7439-92-1
China RoHS	Environmentally Friendly Use Period = 50 years
	For details about hazardous substances go to tab "Downloads", Category "Manufacturer's declaration"

Drawings

Schematic diagram



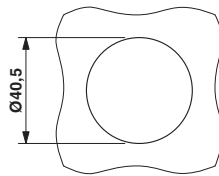
Dimensional drawing



Push-Pull MSTB panel mounting frame

Panel mounting frames - VS-PPC-F2-MSTB-MNNA-1C-SPSA5 - 1405248

Dimensional drawing



Mounting cutout

Classifications

eCl@ss

eCl@ss 10.0.1	27440210
eCl@ss 11.0	27440210
eCl@ss 4.0	27260700
eCl@ss 4.1	27260700
eCl@ss 5.0	27260700
eCl@ss 5.1	27260700
eCl@ss 6.0	27261200
eCl@ss 7.0	27440210
eCl@ss 9.0	27440210

ETIM

ETIM 3.0	EC002310
ETIM 4.0	EC002310
ETIM 6.0	EC002310
ETIM 7.0	EC002310

UNSPSC

UNSPSC 6.01	31261501
UNSPSC 7.0901	31261501
UNSPSC 11	31261501
UNSPSC 12.01	31261501
UNSPSC 13.2	39121421
UNSPSC 18.0	39121421
UNSPSC 19.0	39121421
UNSPSC 20.0	39121421
UNSPSC 21.0	39121421

Approvals

Approvals

Panel mounting frames - VS-PPC-F2-MSTB-MNNA-1C-SPSA5 - 1405248


Approvals

Approvals

UL Recognized / EAC

Ex Approvals

Approval details

UL Recognized		http://database.ul.com/cgi-bin/XYV/template/LISEXT/1FRAME/index.htm	FILE E 118976
Nominal voltage UN		24 V	
Nominal current IN		16 A	
mm ² /AWG/kcmil		14	

EAC		B.01687
-----	---	---------