

ALL DIMENSIONS ARE FOR REFERENCE ONLY.

RELEASE	EC NO: IPG2016-1785	2/26/09
	DRWN: RHOTCA	2016/07/29
	CHKD: HRUIZ	2016/08/02
	APPR: JFMURPHY	2016/08/02
REV	DESCRIPTION	
A1		

QUALITY SYMBOLS	▽=0
	∇=0

GENERAL TOLERANCES (UNLESS SPECIFIED)		
	mm	INCH
4 PLACES	±-	±-
3 PLACES	±-	±-
2 PLACES	±-	±-
1 PLACE	±-	±-
ANGULAR ±1°		
DRAFT WHERE APPLICABLE MUST REMAIN WITHIN DIMENSIONS		

DIMENSION STYLE	
IN/MM	
DRAWN BY	DATE
RH	2009/02/26
CHECKED BY	DATE
HRUIZ	2016/07/29
APPROVED BY	DATE
JFMURPHY	2016/08/02
MATERIAL NO.	
SEE TABLE	
SIZE	B

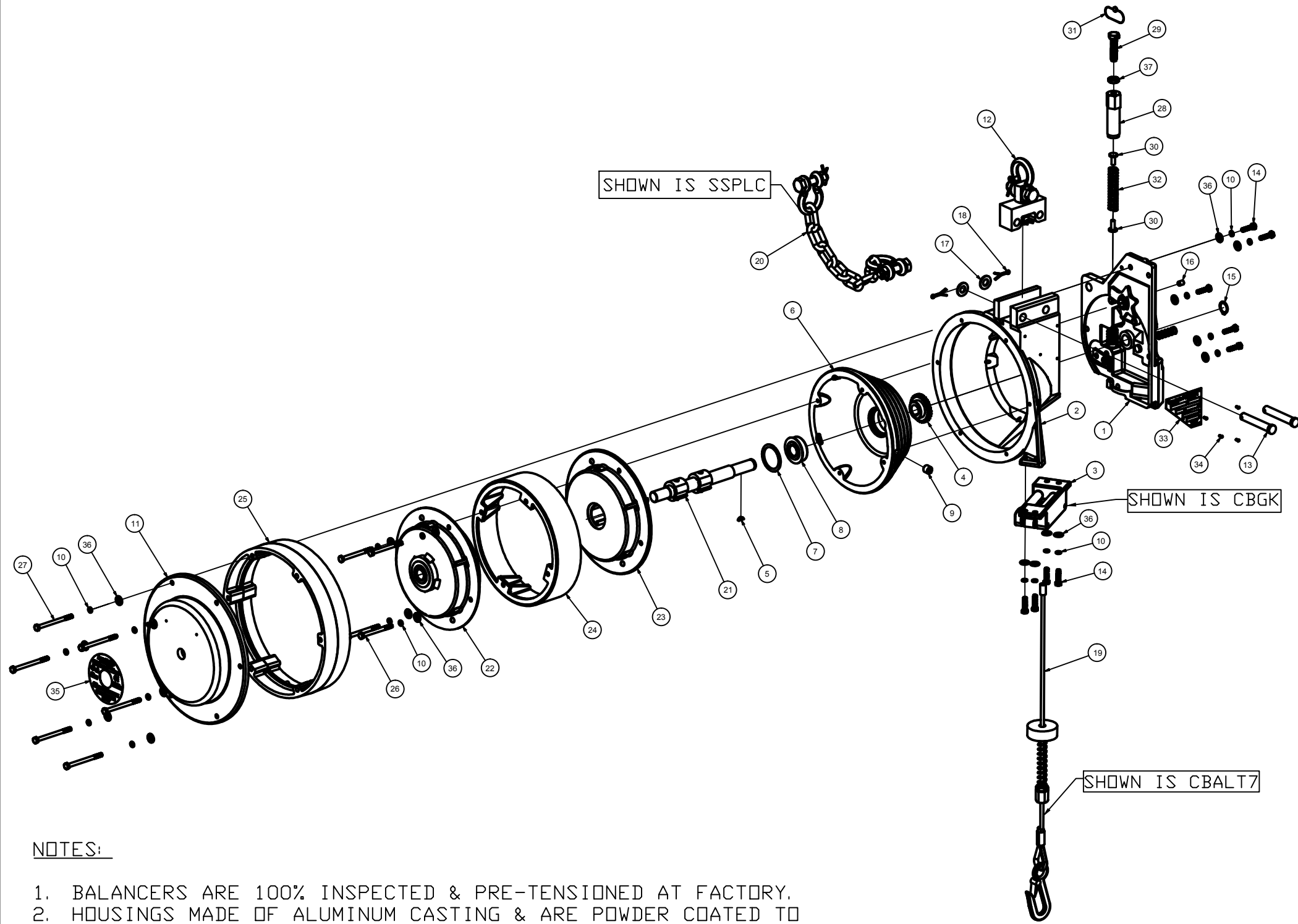
SCALE	DESIGN UNITS	THIRD ANGLE PROJECTION	
NTS	INCH		
TITLE			
KA SERIES BALANCER SPECIFICATIONS			

MATERIAL NO.		DOCUMENT NO.	
SEE TABLE		SD-130172-002	
THIS DRAWING CONTAINS INFORMATION THAT IS PROPRIETARY TO MOLEX INCORPORATED AND SHOULD NOT BE USED WITHOUT WRITTEN PERMISSION			SHEET NO.
			1 OF 7

F
E
D
C
B
A

F
E
D
C
B
A

10 9 8 7 6 5 4 3 2 1



ITEM	MATERIAL NUMBER	ENGINEERING NUMBER	ITEM DESCRIPTION
1	SEE CHART	SEE CHART	BASE SUB-ASSEMBLY - POWDER BLUE
2	1301792332	59075HP-STND-BL	J/K BAL MAIN HOUSING - POWDER BLUE
3	1301790283	CBGK	CABLE GUIDE ASSY FOR KA BALANCERS
4	1301790476	31058	MAIN SHAFT GEAR
5	1301790109	751-P-10	WOODRUFF KEY
6	SEE CHART	SEE CHART	DRUM ASSY FOR KA BALANCERS
7	1301790094	581-P-70	INTERNAL RETAINING RING
8	1301790080	376-P-10	FLANGE BEARING
9	1301790113	827-P-10	1/4"NPTx7/16"LG PIPE PLUG
10	1301790003	101-P-30	1/4-SPLIT LOCK WASHER
11	1301790668	31368-1	J/K COVER - POWDER BLUE
12	SEE CHART	SEE CHART	UPPER SHACKLE ASSY FOR KA BALANCER
13	1301790012	1235-P-2	CLEVIS PIN
14	1301790171	AG19321	M6X22LG HEX HD BOLT
15	1301790151	AG12175	EXTERNAL RETAINING RING FOR J/K SHAFT
16	1301790149	AG12167	M8X1.25 - 10LG SKT SCREW J/K BAL
17	1301790146	AG10220	M12 PLAIN WASHER 24mm O.D. BZP
18	1301790027	228-P-12	PIN SPLIT 1/8 x 1.0 - BZP
19	SEE CHART	SEE CHART	CABLE ASSEMBLY FOR KA BALANCERS
20	SEE CHART	SEE CHART	SECONDARY SUPPORT KA BALANCERS
21	1301790491	31240-1	MAINSHAFT ASSY FOR KA BALANCERS
22	SEE CHART	SEE CHART	OUTER SPRING ASSY FOR KA BALANCER
23	SEE CHART	SEE CHART	INNER SPRING ASSY FOR KA BALANCER
24	1301790489	31239-1	SPRINGS SEPARATOR RING - KA BALANCER
25	1301790523	59078-1	KA HOUSING EXTENSION - POWDER BLUE
26	1301790535	AG12171	M6X70LG HEX HEAD BOLT
27	1301790537	AG12188	M6X80LG HEX HEAD BOLT
28	1301790494	31246-UK	SPRING RETAINER FOR KA BALANCER
29	1301790565	AG12174-1	DRILLED AG12174 - FOR SAFETY SPRING
30	1301790496	31268	SEAT SPRING FOR J/K BALANCERS
31	1301790516	37384	LEAD SEAL WITH LOCK - FOR KA BALANCER
32	SEE CHART	SEE CHART	COMPRESSION SPRING
33	1302264665	AG10002	GLOBAL TRAPEZ LABEL
34	1301790112	76-P-30-SS	#2 X 1/4 LONG, TYPE-U DRIVE SCREW SS
35	1302280761	M13060124	ROUND WHITE GLOBAL LABEL
36	1301790015	126-P-50	WASHER-[.28in ID]x[.63in OD]x[.06in TK]
37	1301790533	AG12169	M10 X 1.5 LOCK NUT

FOR INDIVIDUAL REPAIR PART NUMBERS PLEASE CONTACT YOUR LOCAL SALES REP.

- NOTES:**
- BALANCERS ARE 100% INSPECTED & PRE-TENSIONED AT FACTORY.
 - HOUSINGS MADE OF ALUMINUM CASTING & ARE POWDER COATED TO MEET HARSH INDUSTRIAL ENVIRONMENTS.
 - ALWAYS READ INSTRUCTIONS MANUAL BEFORE USING BALANCERS.
 - BALANCERS ARE NOT TO BE USED AS RETRACTORS. THEIR MAIN PURPOSE IS TO BALANCE A LOAD AND NOT TO RETRACT ONE.
 - OVERALL DIMENSIONS ARE FOR REFERENCE ONLY.
 - STANDARD CATALOG BALANCERS ARE EQUIPPED WITH SAFETY CHAIN BUT IF APPLICATION REQUIRES NO SAFETY CHAIN ADD "D" SUFFIX TO STANDARD BALANCER P/N: EXAMPLE 120KAD
 - WHEN MOUNTING BALANCER, ALWAYS MAKE SURE THE SAFETY PIN THAT COMES WITH THE SHACKLE IS INSTALLED & SECURED.

RELEASE EC NO: IPG2016-1785 DRWN: RHOTCA CHKD: HRUIZ APPR: JFMURPHY 2/26/09 2016/07/29 2016/08/02	DESCRIPTION REV A1	QUALITY SYMBOLS ▽=0 ▽C=0	GENERAL TOLERANCES (UNLESS SPECIFIED) mm INCH 4 PLACES ±- ±- 3 PLACES ±- ±- 2 PLACES ±- ±- 1 PLACE ±- ±- ANGULAR ±1°	DIMENSION STYLE IN/MM DRAWN BY DATE RH 2009/02/26 CHECKED BY DATE HRUIZ 2016/07/29 APPROVED BY DATE JFMURPHY 2016/08/02	SCALE NTS DESIGN UNITS INCH THIRD ANGLE PROJECTION	TITLE KA SERIES BALANCER SPECIFICATIONS ---- MOLEX INCORPORATED	MATERIAL NO. SEE TABLE SIZE B	DOCUMENT NO. SD-130172-002 SHEET NO. 2 OF 7	
		DRAFT WHERE APPLICABLE MUST REMAIN WITHIN DIMENSIONS							
		THIS DRAWING CONTAINS INFORMATION THAT IS PROPRIETARY TO MOLEX INCORPORATED AND SHOULD NOT BE USED WITHOUT WRITTEN PERMISSION							
		M10 X 1.5 LOCK NUT							

BALANCER MODEL:		LOAD CAPACITY CHART:		ITEMS INDEX AS PER BOM TABLE USED BY EACH MODEL:											
				WIEGHT RANGE FOR EACH BALANCER MODEL:		ITEM #1:	ITEM #6:	ITEM #22:	ITEM #23:	ITEM #32:	ITEM 12 SHACKLE ASSY USED BY EACH MODEL:		ITEM 19 CABLE ASSEMBLY USED BY EACH MODEL:		
		MATERIAL NUMBER	MODEL NUMBER	IN LBS	IN KGS	MATERIAL NUMBER	MATERIAL NUMBER	MATERIAL NUMBER	MATERIAL NUMBER	MATERIAL NUMBER	MATERIAL NUMBER	REPAIR KIT NUMBER	MATERIAL NUMBER	REPAIR KIT NUMBER	CABLE LENGTH
1301720026	110KA	85 - 115	38 - 52	1301790587	1301790610	1301790704	1301790714	1301790492	1301790335	UHKKS	1301790280	CBALT7	7 FEET	1301790329	SSPLC
1301720785	125KA	115 - 125	52 - 57			1301790705	1301790715	1301790492							
1301720786	145KA	124 - 145	56 - 66			1301790706	1301790716	1301790493							
1301720787	165KA	143 - 165	65 - 75			1301790707	1301790717	1301790493							
1301720788	175KA	159 - 175	72 - 79			1301790708	1301790718	1302261318							
1301720098	200KA	175 - 200	79 - 91			1301790711	1301790721	1302261318							
1301720116	220KA	200 - 220	91 - 100			1301790712	1301790722	1302261318							
1301720124	240KA	220 - 243	100 - 110	1301790587	1301790610	1301790713	1301790723	1302261318			1301790280	CBALT7	7 FEET		
1301720313	9110KA	80 - 110	36 - 50	1301794778	1301790611	1301790704	1301790714	1301790492			1301790281	CBALT9	9 FEET		
1301720320	9120KA	115 - 126	52 - 57	1301794778	1301790611	1301790705	1301790715	1301790492			1301790281	CBALT9	9 FEET		
1301720325	9140KA	125 - 130	56 - 58	1301794778	1301790611	1301790706	1301790716	1301790493			1301790281	CBALT9	9 FEET		
1301720330	9150KA	TBD - 145	TBD - 66	1301794778	1301790611	1301790707	1301790717	1301790493			1301790281	CBALT9	9 FEET		
1301720822	125KAD	115 - 125	52 - 57	1301790587	1301790610	1301790705	1301790715	1301790492			1301790280	CBALT7	7 FEET		
1301720829	145KAD	124 - 145	61 - 65			1301790706	1301790716	1301790493							
1301710248	200KAD	175 - 200	79 - 91			1301790711	1301790721	1302261318							
1301710249	220KAD	200 - 220	91 - 100	1301790587	1301790610	1301790712	1301790722	1302261318	1301790335	UHKKS	1301790280	CBALT7	7 FEET	1301790329	SSPLC

IMPORTANT NOTE:

PLEASE NOTE THAT MODELS WITHOUT A SAFETY CHAIN OR "KAD" SERIES ARE NOT AVAILABLE FOR SALE IN NORTH AMERICA. THESE SERIES ARE AVAILABLE FOR SALE ONLY IN EU STATES.

RELEASE EC NO: IPG2016-1785 DRWN: RHOTCA CHKD: HRUIZ APPR: JFMURPHY 2/26/09 2016/07/29 2016/08/02	DESCRIPTION REV A1	QUALITY SYMBOLS	GENERAL TOLERANCES (UNLESS SPECIFIED)		DIMENSION STYLE		SCALE	DESIGN UNITS	THIRD ANGLE PROJECTION
		= 0 = 0	IN/MM		NTS	INCH	TITLE KA SERIES BALANCER SPECIFICATIONS ---- MOLEX INCORPORATED		
			mm	INCH	DRAWN BY	DATE		DOCUMENT NO. SD-130172-002	
			4 PLACES	±-	±-	RH	2009/02/26		SHEET NO. 3 OF 7
			3 PLACES	±-	±-	CHECKED BY	DATE		
	2 PLACES	±-	±-	HRUIZ	2016/07/29	THIS DRAWING CONTAINS INFORMATION THAT IS PROPRIETARY TO MOLEX INCORPORATED AND SHOULD NOT BE USED WITHOUT WRITTEN PERMISSION			
	1 PLACE	±-	±-	APPROVED BY	DATE				
	ANGULAR ±1°		DRAFT WHERE APPLICABLE MUST REMAIN WITHIN DIMENSIONS		SEE TABLE				
				MATERIAL NO.					

BALANCER MODEL:		LOAD CAPACITY CHART:		ITEMS INDEX AS PER BOM TABLE USED BY EACH MODEL:											
		WIEGHT RANGE FOR EACH BALANCER MODEL:		ITEM #1:	ITEM #6:	ITEM #22:	ITEM #23:	ITEM #32:	ITEM 12 SHACKLE ASSY USED BY EACH MODEL:		ITEM 19 CABLE ASSEMBLY USED BY EACH MODEL:			ITEM 20 SAFETY CHAIN USED BY EACH MODEL:	
		MATERIAL NUMBER	MODEL NUMBER	IN LBS	IN KGS	MATERIAL NUMBER	MATERIAL NUMBER	MATERIAL NUMBER	MATERIAL NUMBER	MATERIAL NUMBER	MATERIAL NUMBER	REPAIR KIT NUMBER	MATERIAL NUMBER	REPAIR KIT NUMBER	CABLE LENGTH
1301720027	110KAB	84 - 115	38 - 52	1301790587	1301790610	1301790704	1301790714	1301790492	1301790335	UHKKS	1301790278	CBALB7	7 FEET	1301790329	SSPLC
1301720818	125KAB	115 - 125	52 - 57			1301790705	1301790715	1301790492							
1301720826	145KAB	124 - 145	56 - 66			1301790706	1301790716	1301790493							
1301720835	165KAB	143 - 165	65 - 75			1301790707	1301790717	1301790493							
1301720844	175KAB	159 - 175	72 - 79			1301790708	1301790718	1302261318							
1301720719	200KAB	175 - 200	79 - 91			1301790711	1301790721	1302261318							
1301720443	110KABC	84 - 115	38 - 52			1301790704	1301790714	1301790492			1301794890	CBALBC7	7 FEET		
1301720819	125KABC	115 - 125	52 - 57			1301790705	1301790715	1301790492							
1301720827	145KABC	124 - 145	56 - 66			1301790706	1301790716	1301790493							
1301720836	165KABC	143 - 165	65 - 75			1301790707	1301790717	1301790493							
1301720845	175KABC	159 - 175	72 - 79			1301790708	1301790718	1302261318							
1301720853	200KABC	175 - 200	79 - 91			1301790711	1301790721	1302261318							
1301720453	220KABC	200 - 220	91 - 100			1301790712	1301790722	1302261318							
1301720454	240KABC	220 - 243	100-110	1301790587	1301790610	1301790713	1301790723	1302261318	1301790335	UHKKS	1301794890	CBALBC7	7 FEET	1301790329	SSPLC

RELEASE EC NO: IPG2016-1785 DRWN: RHOTCA CHKD: HRUIZ APPR: JFMURPHY 2/26/09 2016/07/29 2016/08/02	DESCRIPTION REV A1	QUALITY SYMBOLS	GENERAL TOLERANCES (UNLESS SPECIFIED) 4 PLACES ±- INCH 3 PLACES ±- INCH 2 PLACES ±- INCH 1 PLACE ±- INCH ANGULAR ±1° DRAFT WHERE APPLICABLE MUST REMAIN WITHIN DIMENSIONS	DIMENSION STYLE		SCALE	DESIGN UNITS	THIRD ANGLE PROJECTION		
		▽=0		IN/MM		NTS	INCH			
		∇=0		mm	INCH	DRAWN BY	DATE		TITLE	
						RH	2009/02/26		KA SERIES BALANCER SPECIFICATIONS	
						CHECKED BY	DATE		MOLEX INCORPORATED	
					APPROVED BY	DATE	DOCUMENT NO.	SHEET NO.		
					JFMURPHY	2016/08/02	SD-130172-002	4 OF 7		
					MATERIAL NO.	THIS DRAWING CONTAINS INFORMATION THAT IS PROPRIETARY TO MOLEX INCORPORATED AND SHOULD NOT BE USED WITHOUT WRITTEN PERMISSION				
					SEE TABLE					

10 9 8 7 6 5 4 3 2 1

F

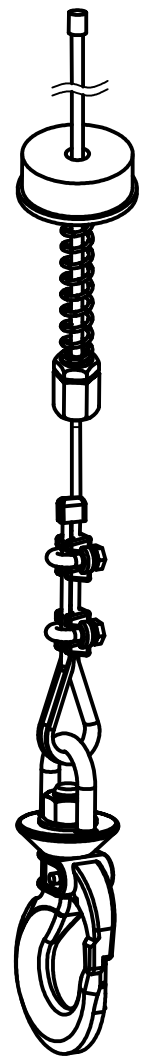
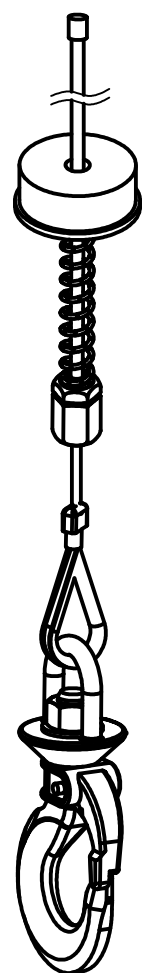
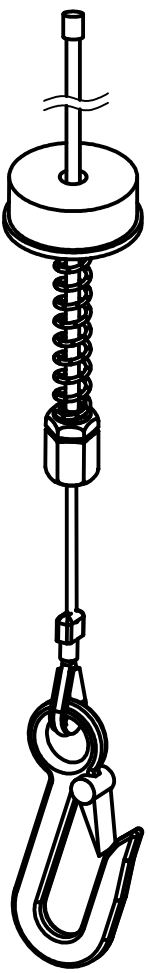
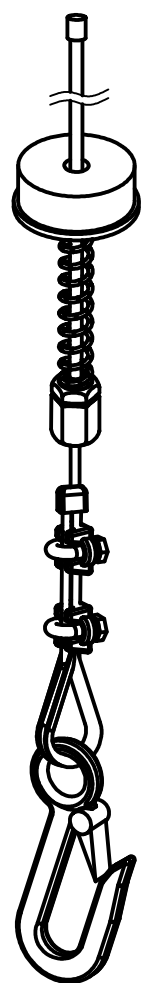
E

D

C

B

A

CABLE ASSY - 7 & 9FT W/BULLARD HOOK & ADJUSTABLE CLAMPS:		CABLE ASSY - 7 & 9FT W/BULLARD HOOK HARD SWAGED:		CABLE ASSY - 7 & 9FT W/EYE HOOK & CLIP HARD SWAGED:		CABLE ASSY - 7 & 9FT W/EYE HOOK & CLIP ADJUSTABLE CLAMPS:	
MATERIAL NUMBER	REPAIR KIT NUMBER	MATERIAL NUMBER	REPAIR KIT NUMBER	MATERIAL NUMBER	REPAIR KIT NUMBER	MATERIAL NUMBER	REPAIR KIT NUMBER
1301794890	CBALBC7	1301790278	CBALB7	1301790280	CBALT7	1301794892	CBALTC7
1301794891	CBALBC9	1301790279	CBALB9	1301790281	CBALT9	1301794893	CBALTC9
							

RELEASE EC NO: IPG2016-1785 DRWN: RHOTCA CHKD: HRUIZ APPR: JFMURPHY 2/26/09 2016/07/29 2016/08/02	DESCRIPTION REV	QUALITY SYMBOLS	GENERAL TOLERANCES (UNLESS SPECIFIED)		DIMENSION STYLE		SCALE	DESIGN UNITS	THIRD ANGLE PROJECTION	
		$\nabla = 0$ $\nabla C = 0$	mm	INCH	IN/MM		NTS	INCH		
			4 PLACES	±-	±-	DRAWN BY	DATE	KA SERIES BALANCER SPECIFICATIONS ---- MOLEX INCORPORATED		
			3 PLACES	±-	±-	RH	2009/02/26			
	2 PLACES	±-	±-	CHECKED BY	DATE	Molex SD-130172-002				
	1 PLACE	±-	±-	HRUIZ	2016/07/29					
	ANGULAR ±1°		APPROVED BY		DATE	DOCUMENT NO. SHEET NO.				
			JFMURPHY		2016/08/02				SD-130172-002	5 OF 7
DRAFT WHERE APPLICABLE MUST REMAIN WITHIN DIMENSIONS			MATERIAL NO.		SEE TABLE			THIS DRAWING CONTAINS INFORMATION THAT IS PROPRIETARY TO MOLEX INCORPORATED AND SHOULD NOT BE USED WITHOUT WRITTEN PERMISSION		
A1			SIZE		B					

10 9 8 7 6 5 4 3 2 1

F

E

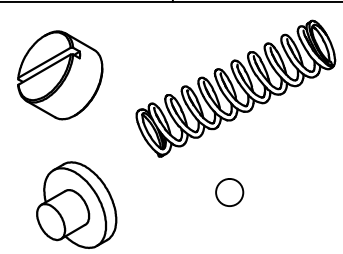
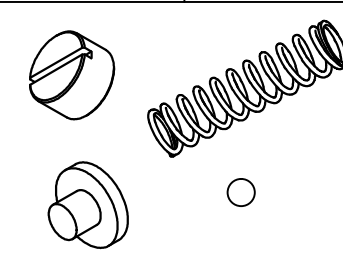
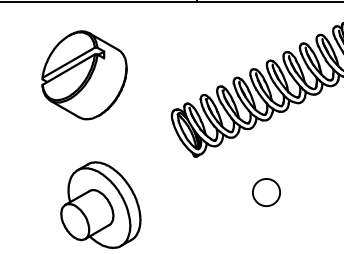
D

C

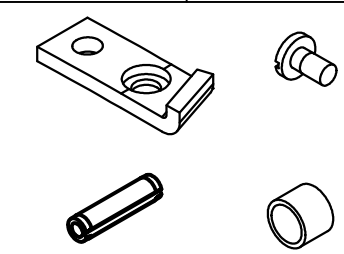
B

A

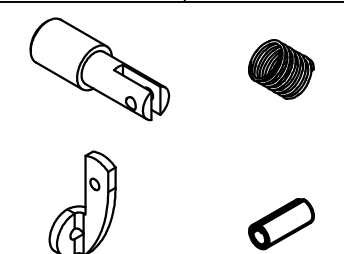
DROP STOP ACTUATOR REPAIR KITS:

MATERIAL NUMBER	REPAIR KIT NUMBER	MATERIAL NUMBER	REPAIR KIT NUMBER	MATERIAL NUMBER	REPAIR KIT NUMBER
1301790299	DSAKA	1301790300	DSAKB	1301790301	DSAKC
					
USED FOR REPAIRS ON FOLLOWING MODELS:		USED FOR REPAIRS ON FOLLOWING MODELS:		USED FOR REPAIRS ON FOLLOWING MODELS:	
MODEL NUMBERS		MODEL NUMBERS		MODEL NUMBERS	
110KA, & VARIATIONS		145KA, & VARIATIONS		175KA, & VARIATIONS	
125KA, & VARIATIONS		165KA, & VARIATIONS		200KA, & VARIATIONS	
				220KA, & VARIATIONS	
				240KA, & VARIATIONS	

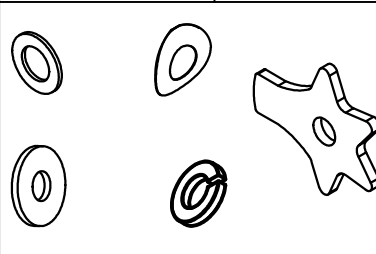
DROP STOP LEVER REPAIR KIT:

MATERIAL NUMBER	REPAIR KIT NUMBER
1301790302	DSLK
	
USED FOR REPAIRS ON FOLLOWING MODELS:	
MODEL NUMBER	
<p>ALL KA MODELS WILL BE USING THIS REPAIR KIT TO REPLACE THE DROP STOP ASSY</p> <p>FOR ALL P/N PLEASE SEE MATERIALS TABLE ON SHEETS 3 AND 4.</p>	

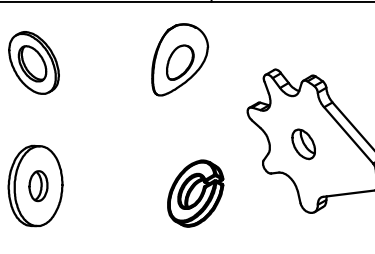
DRUM LOCK REPAIR KIT:

MATERIAL NUMBER	REPAIR KIT NUMBER
1301790288	DLKK
	
USED FOR REPAIRS ON FOLLOWING MODELS:	
MODEL NUMBER	
<p>ALL KA MODELS WILL BE USING THIS REPAIR KIT TO REPLACE THE DRUM LOCK ASSY</p> <p>FOR ALL P/N PLEASE SEE MATERIALS TABLE ON SHEETS 3 AND 4.</p>	

STAR WHEEL FOR 7FT TRAVEL - REPAIR KIT:


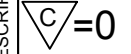
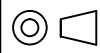
MATERIAL NUMBER	REPAIR KIT NUMBER
1301790330	STAL7
	
USED FOR REPAIRS ON FOLLOWING MODELS:	
MODEL NUMBER	
<p>ALL KA MODELS WITH A 7 FT TRAVEL WILL BE USING THIS REPAIR KIT TO REPLACE THE STAR WHEEL ASSY</p> <p>FOR ALL P/N PLEASE SEE MATERIALS TABLE ON SHEETS 3 AND 4.</p>	

STAR WHEEL FOR 9FT TRAVEL - REPAIR KIT:

MATERIAL NUMBER	REPAIR KIT NUMBER
1301790331	STAL9
	
USED FOR REPAIRS ON FOLLOWING MODELS:	
MODEL NUMBER	
<p>ALL KA MODELS WITH A 9 FT TRAVEL WILL BE USING THIS REPAIR KIT TO REPLACE THE STAR WHEEL ASSY</p> <p>FOR ALL P/N PLEASE SEE MATERIALS TABLE ON SHEETS 3 AND 4.</p>	

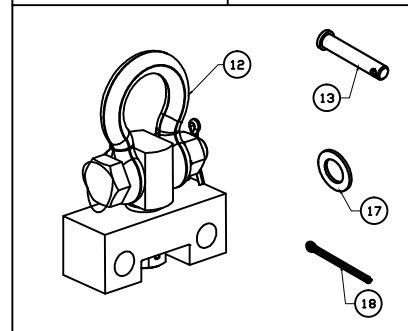
FOR MORE DETAILS ON EVERY REPAIR KIT PLEASE SEE THEIR ASSIGNED DRAWINGS.

FOR INDIVIDUAL REPAIR PART NUMBERS PLEASE CONTACT YOUR LOCAL SALES REP.

RELEASE EC NO: IPG2016-1785 DRWN: RHOTCA CHKD: HRUIZ APPR: JFMURPHY 2/26/09 2016/07/29 2016/08/02	DESCRIPTION REV A1	QUALITY SYMBOLS  = 0  = 0	GENERAL TOLERANCES (UNLESS SPECIFIED)		DIMENSION STYLE IN/MM		SCALE NTS	DESIGN UNITS INCH	THIRD ANGLE PROJECTION 
			4 PLACES ±- mm ±- INCH	DRAWN BY RH	DATE 2009/02/26	TITLE KA SERIES BALANCER SPECIFICATIONS ----			
			3 PLACES ±- mm ±- INCH	CHECKED BY HRUIZ	DATE 2016/07/29				
			2 PLACES ±- mm ±- INCH	APPROVED BY JFMURPHY	DATE 2016/08/02	MATERIAL NO. SEE TABLE	DOCUMENT NO. SD-130172-002	SHEET NO. 6 OF 7	
DRAFT WHERE APPLICABLE MUST REMAIN WITHIN DIMENSIONS			SIZE B	THIS DRAWING CONTAINS INFORMATION THAT IS PROPRIETARY TO MOLEX INCORPORATED AND SHOULD NOT BE USED WITHOUT WRITTEN PERMISSION					

UPPER SHACKLE ASSY FOR KA - REPAIR KIT:

MATERIAL NUMBER	REPAIR KIT NUMBER
1301790335	UHKKS



USED FOR REPAIRS ON FOLLOWING MODELS:

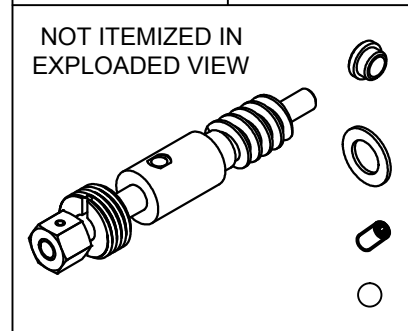
MODEL NUMBER

ALL KA MODELS WILL BE USING THIS REPAIR KIT TO REPLACE THE UPPER SHACKLE ASSY

FOR ALL P/N PLEASE SEE MATERIALS TABLE ON SHEETS 3 AND 4.

WORK GEAR SHAFT ASSY FOR KA - REPAIR KIT:

MATERIAL NUMBER	REPAIR KIT NUMBER
1301790340	WRMK



USED FOR REPAIRS ON FOLLOWING MODELS:

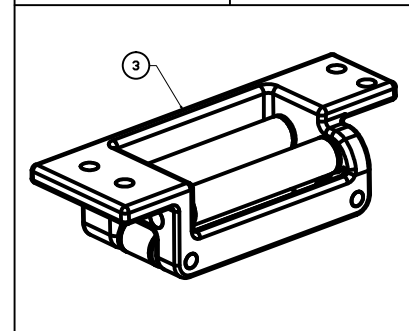
MODEL NUMBER

ALL KA MODELS WILL BE USING THIS REPAIR KIT TO REPLACE THE WORM SHAFT ASSY

FOR ALL P/N PLEASE SEE MATERIALS TABLE ON SHEETS 3 AND 4.

CABLE GUIDE ASSEMBLY FOR KA - REPAIR KIT:

MATERIAL NUMBER	REPAIR KIT NUMBER
1301790283	CBGK



USED FOR REPAIRS ON FOLLOWING MODELS:

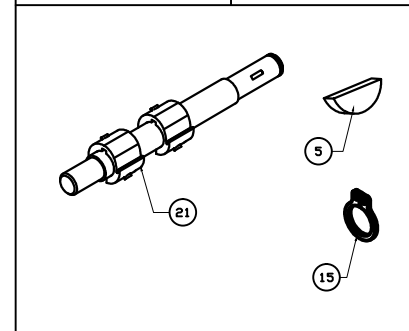
MODEL NUMBER

ALL KA MODELS WILL BE USING THIS REPAIR KIT TO REPLACE THE CABLE GUIDE ASSY

FOR ALL P/N PLEASE SEE MATERIALS TABLE ON SHEETS 3 AND 4.

MAIN SHAFT ASSEMBLY FOR KA - REPAIR KIT:

MATERIAL NUMBER	REPAIR KIT NUMBER
1301790325	SHFK



USED FOR REPAIRS ON FOLLOWING MODELS:

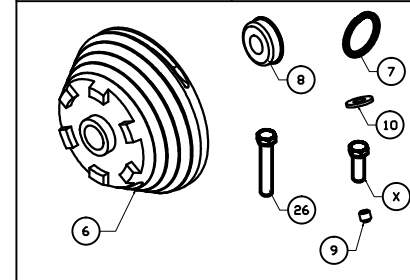
MODEL NUMBER

ALL KA MODELS WILL BE USING THIS REPAIR KIT TO REPLACE THE MAIN SHAFT ASSY

FOR ALL P/N PLEASE SEE MATERIALS TABLE ON SHEETS 3 AND 4.

KA DRUM FOR 7FT & 9FT TRAVEL - REPAIR KIT:

MATERIAL NUMBER	REPAIR KIT NUMBER
1301790291	DRMK7
1301790292	DRMK9



USED FOR REPAIRS ON FOLLOWING MODELS:

MODEL NUMBER

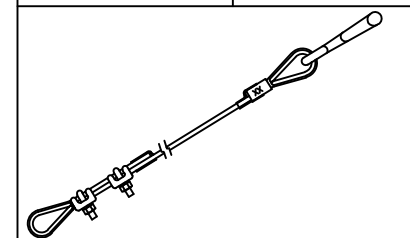
ALL KA MODELS W/ 7FT TRAVEL WILL USE THE DRMK7.

ALL KA MODELS W/ 9FT TRAVEL WILL USE THE DRMK9.

FOR ALL P/N PLEASE SEE MATERIALS TABLE ON SHEETS 3 AND 4.

OVERHANG CABLE EXTENSIONS FOR KA:

MATERIAL NUMBER	REPAIR KIT NUMBER
1301790420	CBOL020
1301790421	CBOL050
1301790422	CBOL100



USED FOR REPAIRS ON FOLLOWING MODELS:

MODEL NUMBER

ALL KA MODELS CAN USE THESE OVERHANG CABLES TO EXTEND THE TOOL OR LOAD REACH. THE OVERHANG CABLES WILL NOT INCREASE LOAD TRAVEL. FOR ALL P/N PLEASE SEE MATERIALS TABLE ON SHEETS 3 AND 4.

FOR MORE DETAILS ON EVERY REPAIR KIT PLEASE SEE THEIR ASSIGNED DRAWINGS.

FOR INDIVIDUAL REPAIR PART NUMBERS PLEASE CONTACT YOUR LOCAL SALES REP.

RELEASE EC NO: IPG2016-1785 DRWN: RHOTCA CHKD: HRUIZ APPR: JFMURPHY 2016/08/02 2/26/09 2016/07/29	DESCRIPTION REV A1	QUALITY SYMBOLS ▽=0 ∇=0	GENERAL TOLERANCES (UNLESS SPECIFIED)		DIMENSION STYLE IN/MM		SCALE NTS	DESIGN UNITS INCH	THIRD ANGLE PROJECTION
			mm	INCH	DRAWN BY	DATE	TITLE		
		4 PLACES	±-	±-	RH	2009/02/26	KA SERIES BALANCER SPECIFICATIONS ---- MOLEX INCORPORATED		
		3 PLACES	±-	±-	CHECKED BY	DATE			
2 PLACES	±-	±-	HRUIZ	2016/07/29					
1 PLACE	±-	±-	APPROVED BY	DATE	MOLEX SD-130172-002				
ANGULAR ±1°			JFMURPHY	2016/08/02					
DRAFT WHERE APPLICABLE MUST REMAIN WITHIN DIMENSIONS			SEE TABLE		DOCUMENT NO.		SHEET NO.		
			SIZE B		THIS DRAWING CONTAINS INFORMATION THAT IS PROPRIETARY TO MOLEX INCORPORATED AND SHOULD NOT BE USED WITHOUT WRITTEN PERMISSION				