

ENCLOSURE FOR COMMAND DEVICES, 22MM,
 ROUND, ENCLOSURE MATERIAL PLASTIC,
 ENCLOSURE TOP PART GRAY,
 1 COMMAND POINT, UNEQUIPPED,
 FLOOR MOUNTING,
 1 X M20 EACH AT TOP AND BOTTOM

Enclosure:

Design of the enclosure		Empty enclosure for command and signaling devices
Material / of the enclosure		plastic
Color / of top part of the enclosure		grey
Number of Command Points		1
Product component / protective collar		No
Form / of the enclosure front		Square
Design of electrical connection / on enclosure		Cable routing above, below / left, right, each 1 x M20
Type of mounting / of enclosure		Vertical / horizontal
Product function / EMERGENCY STOP function		No

Actuator / signaling device:

Product component / front ring		No
---------------------------------------	--	----

Contact block / lampholder

Product function / positive opening		No
Type of fixing/fixation / for contact blocks		Floor mounting / front mounting (1-pole)
Product component / fluorescent materials		No
Product extension / optional / fluorescent materials		Yes

Accessories:









Number of labeling plates		1
Product component / holder for 3 switching elements		No

General technical details:

Delivery state / pre-wired on strip terminal		No
Product component / stand/pedestal		No
Resistance against shock		
<ul style="list-style-type: none"> • for devices with incandescent lamp / according to IEC 60068-2-27 • for devices without incandescent lamp / according to IEC 60068-2-27 		<p><= 30g</p> <p><= 50g</p>

Resistance against vibration / according to IEC 60068-2-6		20 ... 200 Hz: 5g
Item designation		U S
<ul style="list-style-type: none"> • according to DIN EN 61346-2 • according to DIN 40719 extendable after IEC 204-2 / according to IEC 750 		
Ambient temperature		
<ul style="list-style-type: none"> • during operating • during storage 	°C	-25 ... +70
	°C	-40 ... +80
Protection class IP		IP65
climatic class / during the operating phase / according to EN 60721		3K6
Shape / of the installation hole		round
Mounting diameter	mm	22
Width	mm	85
Height	mm	85
Depth	mm	64

Certificates/approvals:

General Product Approval	Declaration of Conformity	Test Certificates
 CSA  GOST  UL	 EG-Konf.	Special Test Certificate
Shipping Approval	other	
 ABS  DNV  LRS  PRS	Confirmation Environmental Confirmations	

Further information:

Information- and Downloadcenter (Catalogs, Brochures,...)

<http://www.siemens.com/industrial-controls/catalogs>

Industry Mall (Online ordering system)

<http://www.siemens.com/industrial-controls/mall>

Cax online generator:

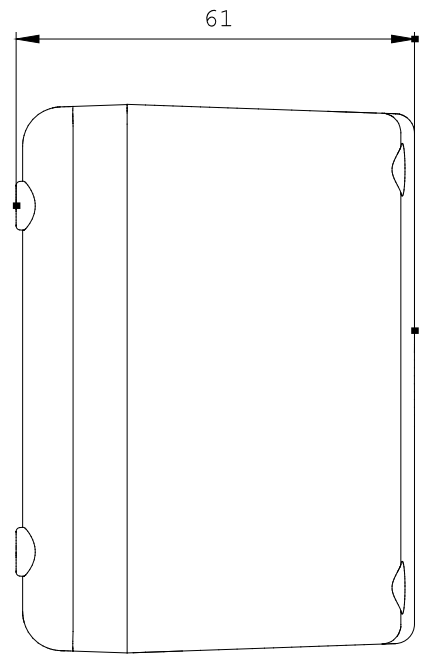
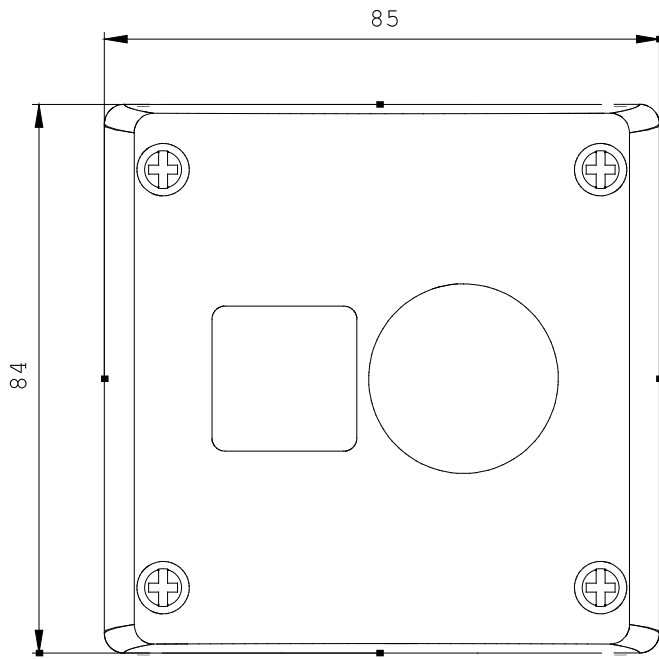
<http://www.siemens.com/cax>

Service&Support (Manuals, Certificates, Characteristics, FAQs,...)

<http://support.automation.siemens.com/WWW/view/en/3SB3801-0AA3/all>

Image database (product images, 2D dimension drawings, 3D models, device circuit diagrams, ...)

http://www.automation.siemens.com/bilddb/cax_en.aspx?mlfb=3SB3801-0AA3



\W9.4444;
\W9.25; 3SB3801-0AA3_?

last change:

Jan 21, 2013