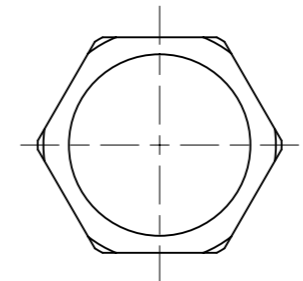


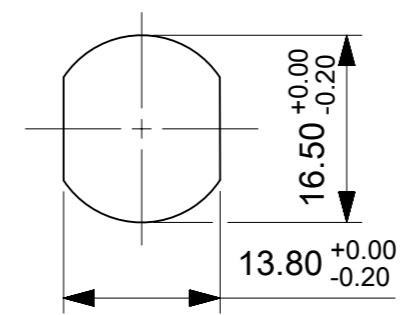
GENERAL CHARACTERISTICS		STANDARD	
No. OF CONTACTS	IEC 947-5-2	12	
RATED VOLTAGE	IEC 664	30V AC/DC	
POLLUTION DEGREE	IEC 664	3	
CURRENT CARRYING CAPACITY	IEC 512-3 TEST 5b	1.5A	
CONTACT RESISTANCE	IEC 512-2 TEST 2 A	< 5 mOhm	
RATED IMPULSE WITHSTAND VOLTAGE	IEC 664	0.8 kV	
TEST VOLTAGE	IEC 60512-2 TEST 4 A	0.5kV/60 sec	
INSULATION RESISTANCE	IEC 512-2 TEST 3 A	> 100 MOhm	
IP DEGREE OF PROTECTION	IEC 529	IP 67	
PIN DIAMETER		0.6 mm	
TERMINATION		CRIMP	
FLAMMABILITY	INSERTS	UL 94	V-0
	CABLES		VDE 0472/804
MECHANICAL OPERATION		100 MATING CYCLES	
TEMPERATURE RANGE	IEC 60668-1	-25°C/+90°C	

WIRING DIAGRAM

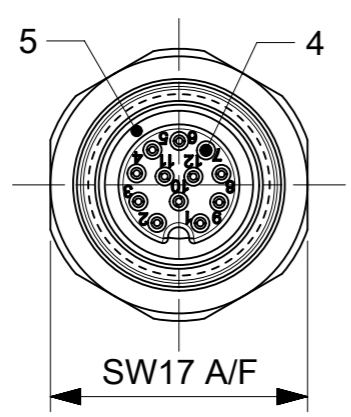
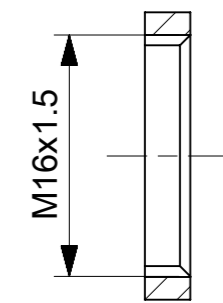
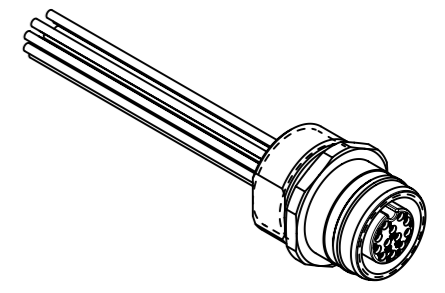
- 1) WHITE
- 2) BROWN
- 3) GREEN
- 4) YELLOW
- 5) GREY
- 6) PINK
- 7) BLUE
- 8) RED
- 9) BLACK
- 10) VOILET
- 11) GREY/PINK
- 12) RED/BLUE



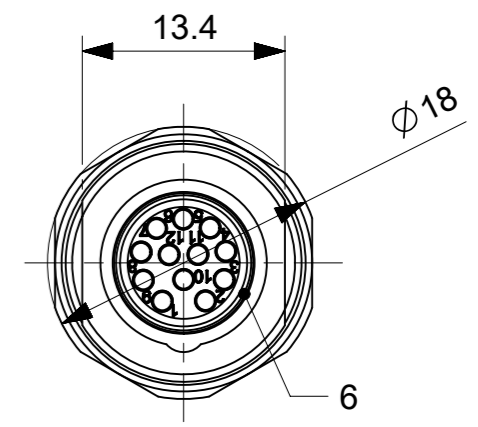
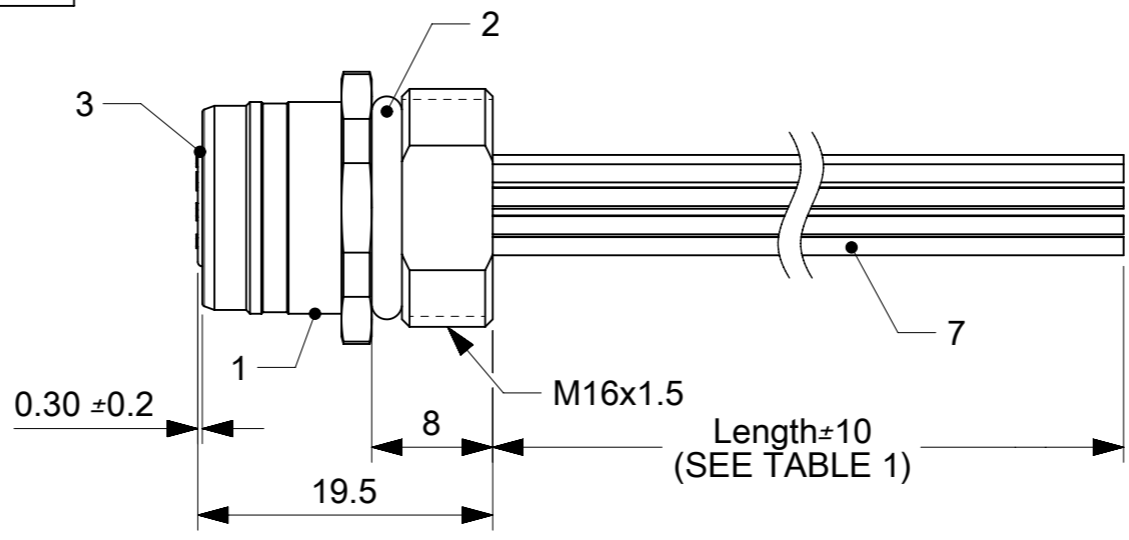
LOCK NUT M16x1.5  
(NEEDS TO BE ORDER SEPARATE)



PANEL CUTOUT



VIEW FROM FRONT SIDE



VIEW FROM WIRE SIDE

ITEM	QTY.	DESCRIPTION	MATERIAL	FINISH/COLOR
1	1	UL.M12(FE)XM16(M)FRONT PANEL	BRASS	Ni-PLATED
2	1	O-RING	NBR	BLACK
3	1	INSERT M12 FEMALE	PUR	BLACK
4	12	M12 FEMALE CONTACT	BRASS	Cu/Ni3bAuCo0.6
5	1	GASKET OR	FPM	RED
6	1	SHELL FEMALE SHIELD	BRASS	Ni-PLATED
7	12	WIRES	-	-
8	-	ADH PUR 2K HARD WEVONAT 300M BN V0	-	-
9	-	ADH PUR 2K WEVO CASTING RESIN PU552FL/10	-	-

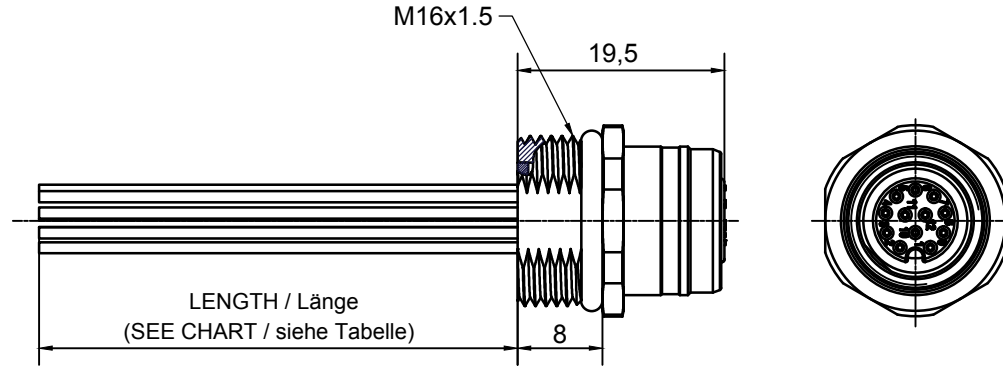
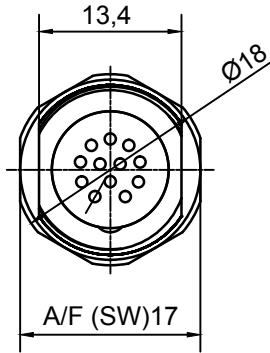
TABLE 1

PART-NUMBER	ENGINEERING.NO	LENGTH
1200845012	WRCU20E01C200	200mm
1200845013	WRCU20E01C300	300mm

SYMBOLS	THIS DRAWING CONTAINS INFORMATION THAT IS PROPRIETARY TO MOLEX ELECTRONIC TECHNOLOGIES, LLC AND SHOULD NOT BE USED WITHOUT WRITTEN PERMISSION		CURRENT REV DESC:	
	▽ = 0	mm	SCALE	
▽ = 0	GENERAL TOLERANCES (UNLESS SPECIFIED)		EC NO: 178263	
▽ = 0	4 PLACES ±	MM	INCH	DRWN: SSM 2018/05/22
▽ = 0	3 PLACES ±			CHK'D: SSM 2018/06/20
▽ = 0	2 PLACES ±			APPR: RSILLER 2018/06/22
▽ = 0	1 PLACE ±			INITIAL REVISION:
⊠ = 0	0 PLACES ±	0.3	±	DRWN: BBRAUCH 2012/01/23
■ = 0	ANGULAR TOL ± 1.0°		APPR: REISSNER 2012/02/15	
▽ = 0	DRAFT WHERE APPLICABLE MUST REMAIN WITHIN DIMENSIONS		THIRD ANGLE PROJECTION	DRAWING
		A3-SIZE		SERIES
		120084		MATERIAL NUMBER
		SEE TABLE 1		CUSTOMER
		GENERAL MARKET		SHEET NUMBER
		1 OF 1		

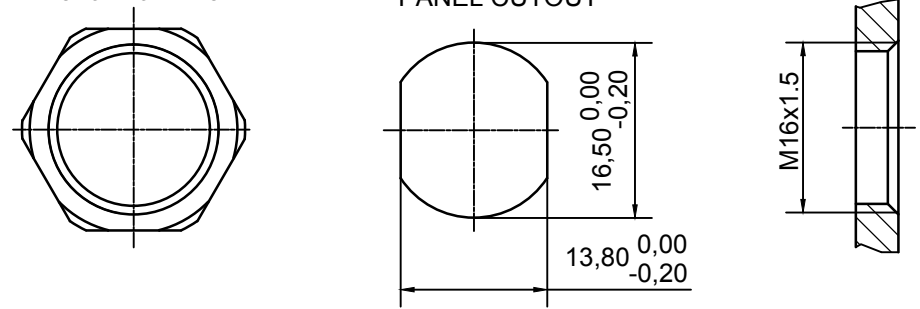
WIRING DIAGRAM

- 1 WH - WHITE
- 2 BN - BROWN
- 3 GN - GREEN
- 4 YE - YELLOW
- 5 GY - GREY
- 6 PK - PINK
- 7 BU - BLUE
- 8 RD - RED
- 9 BK - BLACK
- 10 VT - VIOLET
- 11 GYPK - GREY/PINK
- 12 RDBU - RED/BLUE

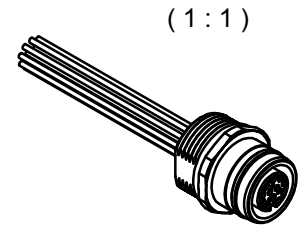


LOCK NUT M16x1.5  
 P/N: 0900 00090 00010  
 LOCK NUT NEEDS TO BE ORDER SEPARATE

PANEL CUTOUT



PART-NUMBER	ENGINEERING NO.	LENGTH
Teile-Nummer	Artikel-Nummer	Länge
1200845012	WRCU20E01C200	200 mm
1200845013	WRCU20E01C300	300 mm



GENERAL CHARACTERISTICS				STANDARD	
Allgemeine Kennwerte				Norm	
NUMBER OF CONTACTS	Polzahl			IEC 947-5-2	12
CONTACT CONFIGURATION	Kontaktanordnung				
RATED VOLTAGE	Bemessungsspannung	IEC 664	30V AC / DC		
POLLUTION DEGREE	Verschmutzungsgrad	IEC 664	3		
CURRENT CARRYING CAPACITY	Betriebsstrom	IEC 512-3 Test 5 b	1,5A		
CONTACT RESISTANCE	Durchgangswiderstand	IEC 512-2 Test 2 A	< 5mOhm		
RATED PULSE WITHSTAND VOLTAGE	Bemessungsstoßspannung	IEC 664	0,8 kV		
TEST VOLTAGE	Prüfspannung	IEC 60512-2 Test 4 A	0,5 kV / 60 sec		
INSULATION RESISTANCE	Isolationswiderstand	IEC 512-2 Test 3 A	> 100 MOhm		
IP DEGREE OF PROTECTION	IP - Schutzart	IEC 529	IP 67		
PIN DIAMETER	Stift Durchmesser		0,6mm		
MATERIALS	CONTACTS	Werkstoffe	Kontakte	COPPER ALLOY / Kupferlegierung	
	CONTACTS PLATING		Kontaktoberfläche	Ni/Au	
	DIELECTRIC MATERIAL		Kontaktträger	PA 6.6	
	GASKETS (O-RING)		Dichtung (O-Ring)	NBR	
	HOUSING		Gehäuse	CuZn (BRASS) WTH/mit NICKEL-PLATED / Ni-Oberfläche	
TERMINATION	Anschlußart		CRIMP		
FLAMM-ABILITY	INSERTS	Brennbarkeit	Kontaktträger	UL 94	V-0
	CABLE		Leitung / Kabel		VDE 0472 / 804
MECHANICAL OPERATION	Mechanische Lebensdauer		100 MATING CYCLES / Steckzyklen		
TEMPERATURE RANGE	Temperaturbereich	IEC 60668-1	-25°C / +90°C		

DESCRIPTION	QUALITY SYMBOLS	GENERAL TOLERANCES (UNLESS SPECIFIED)		DIMENSION STYLE		SCALE	DESIGN UNITS	THIRD ANGLE PROJECTION
		mm	INCH	MM ONLY				
DESCRIPTION EC NO: IPG2012-0277 DRWN: BBRAUCH 2012/01/23 CHKD: REISSNER APPR: REISSNER 2012/02/15	▽ = 0 ▽ = 0	4 PLACES	±---	±---	DRAWN BY	DATE	REC U12 12P AC FE STR XM M16 WIR SE SHLD BK	Molex <b>MOLEX INCORPORATED</b> DOCUMENT NO. SD-120084-142 SHEET NO. 1 OF 1
		3 PLACES	±---	±---	CHECKED BY	DATE		
		2 PLACES	±---	±---	REISSNER	2012/01/24		
		1 PLACE	±0.3	±---	APPROVED BY	DATE		
		ANGULAR ± 1°			REISSNER	2012/02/15		
		DRAFT WHERE APPLICABLE MUST REMAIN WITHIN DIMENSIONS		see table		MATERIAL NO.		
1	REV	SIZE A3		THIS DRAWING CONTAINS INFORMATION THAT IS PROPRIETARY TO MOLEX INCORPORATED AND SHOULD NOT BE USED WITHOUT WRITTEN PERMISSION				