

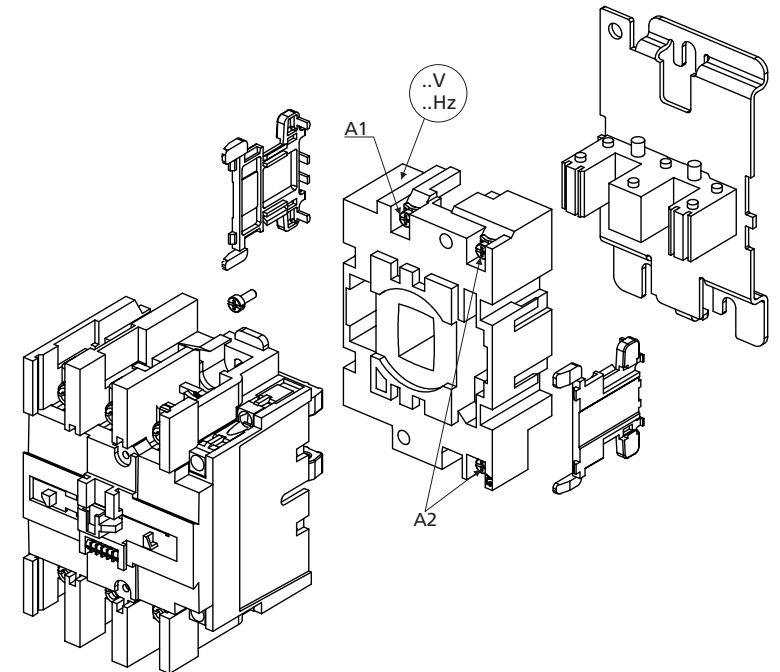
# USER MANUAL

## Contactors

CC40~CC80



Disconnect all power before installing, modifying or servicing equipment.  
Electric shock will result in death or serious injury.  
Only skilled & qualified personnel should carry out the following operations and must adhere to all appropriate national, regional and local standards applicable.

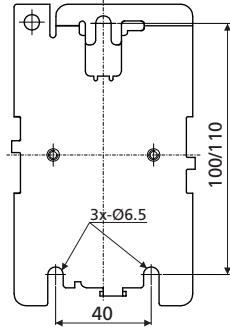


### Crompton Controls Ltd.

Monckton Road, Wakefield, West Yorkshire WF2 7AL  
Phone: +44 (0)1924 368251 Fax: +44 (0)1924 367274  
E-mail: sales@cromptoncontrols.co.uk, www.cromptoncontrols.co.uk

XXXXX

## Mounting Dimensions:



Note: Dimensions not to scale.

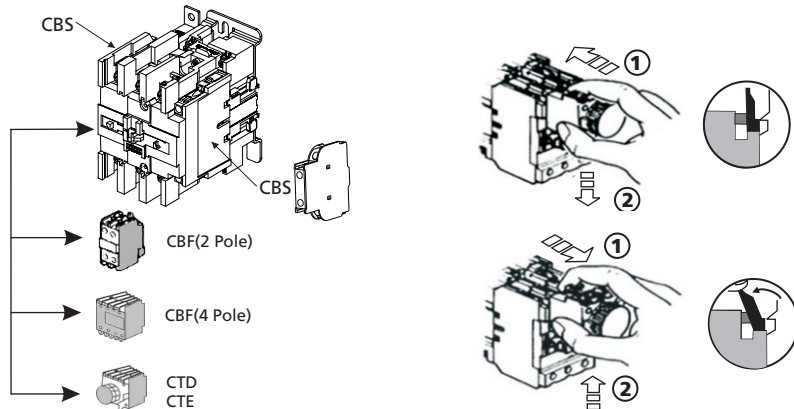
## Wiring Capability:

Load Terminals			Head Type	CC40~65	CC80		
Clamp		Solid Wire	mm <sup>2</sup>	2 x 2.5...16	2 x 4...25	Slot(CC40~65) Slot/Hex Socket Head(CC80)	
		Stranded Wire	mm <sup>2</sup>	2 x 2.5...16	2 x 4...25		
		AWG Wire		2 x 14...6	2 x 12...2		
		Standard Gauge		2 x A3...B7	2 x A4...B9		
		Tightening Torque	Nm/lb.in	5 / 44.25	9 / 79.5		
		Tightening Torque(UL)	lb.in	35	7		
Screw Plate		Auxiliary Terminals		Head Type		Combi-Head (Slot/Philips)	
				CC40~80			
		Solid Wire	mm <sup>2</sup>	Control Circuit	Accessories		
		Stranded Wire	mm <sup>2</sup>	2 x 1...4	2 x 1...2.5		
		AWG Wire		2 x 1...4	2 x 1...2.5		
		Standard Gauge		2 x 18...12	2 x 16...14		
Tightening Torque	Nm/lb.in	2 x A3	2 x A2				
Tightening Torque(UL)	lb.in	1.2 / 10.6	1.2 / 10.6				
		7	7				
				Ø 6	Philips No.2		

### CAUTION

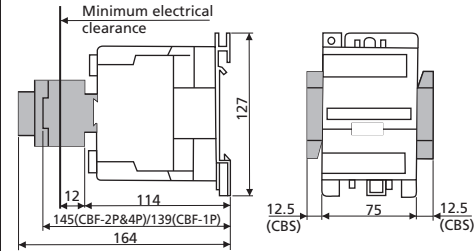
Terminal screws must be tightened at recommended torque and checked frequently. All strands of cable shall go into the terminal of each phase.

## Auxiliary contact blocks

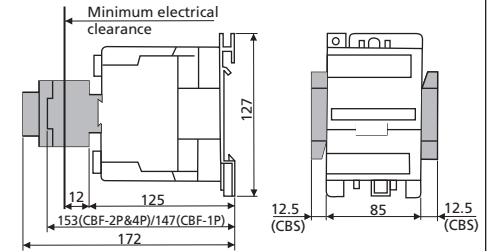


## Dimensions:

### CC40~65

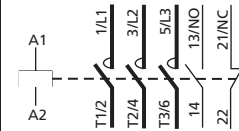


### CC80



## Schemes:

### CC4011 to 8011



### CBF10



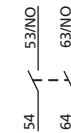
### CBF01



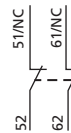
### CBF11



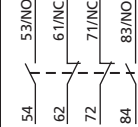
### CBF20



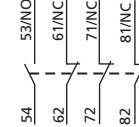
### CBF02



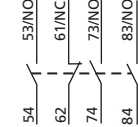
### CBF22



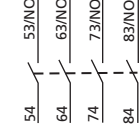
### CBF13



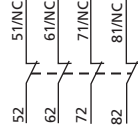
### CBF31



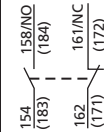
### CBF40



### CBF04



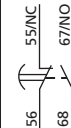
### CBS11



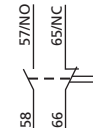
### CBS20



### CTE



### CTD



Note: Figures in ( ) are for the device mounted on the RH side of the contactor.