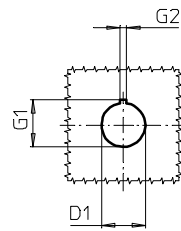
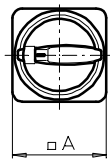
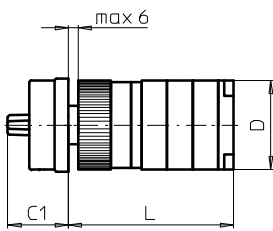
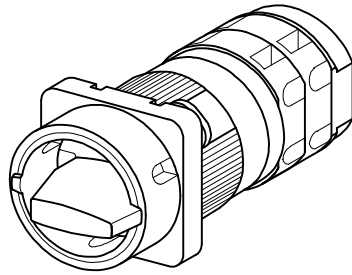


# Front Mounting Switches

# sälzer



**Product lines**  
M200 / T200

**Front mounting switch**

**Single hole mounting**  
ø 22,5 mm

**205M1 (IP66)**  
**205M4 (IP66)**

Complete switch	Poles	Product line	Rated data (IEC 60947)			Order code number
			Operational current I <sub>e</sub>	Operational power at 380–440 V		
			AC-21A A	AC-23A kW	AC-3 kW	
Main Switches	1 ... 24	M200	20	7,5	5,5	<b>M220 - 61 ... - 205M1</b>
Switching angle 90°			25	11	7,5	<b>M225 - 61 ... - 205M1</b>
OFF position padlockable 09h	1 ... 24	T200	32	15	11	<b>T225 - 61 ... - 205M1</b>
Main/Emergency-Off Switches	1 ... 24	M200	20	7,5	5,5	<b>M220 - 61 ... - 205M4</b>
Switching angle 90°			25	11	7,5	<b>M225 - 61 ... - 205M4</b>
OFF position padlockable 09h	1 ... 24	T200	32	15	11	<b>T225 - 61 ... - 205M4</b>

## SMD modules for basic switch

Mounting form module for 205M.

M200 / T200

**BFB2 - 219**

M-padlock device 48 x 48 mm, mounting form 205M1  
Escutcheon black, padlockable handle black

**2EM1**

M-padlock device 48 x 48 mm, mounting form 205M4  
Escutcheon yellow, padlockable handle red

**2EM4**

## Dimensions (mm)

Product lines	A	C1	D	D1	G1	G2	L with ... stages (max. 12)							each add. stage
							1	2	3	4	5	6	7	
M220	48	31	46	22,5	24,2	3,2	59	69	79	89	99	109	119	10
M221	48	31	46	22,5	24,2	3,2	62	75	88	101	114	127	140	13
M225	48	31	48	22,5	24,2	3,2	62	75	88	101	114	127	140	13
T225	48	31	50	22,5	24,2	3,2	64	79	94	109	124	139	154	15