

Door interlock with metal shaft extension

Single hole front mounting

20 A / 25 A / 32 A / 40 A / 63 A

Main/Emergency-Off Switch ■
Main Switch ■

3 ... 4 pole

IP66 (front)

Single hole front mounting Ø 22.5 mm



Order code structure:

Ordering example: 3 pole Main/Emergency-Off Switch, 40A, M-padlock device:

Type - Switching programme - Mounting form

H233 - 41300 - 281M4

Type	Rated data (IEC 60947)			Degree of protection Terminals
	Operational current I _e AC-21A (A)	Operational power (at 380–440V) AC-23A (kW) AC-3 (kW)		
H216	20	5.5	3.7	IP20
H220	25	7.5	5.5	IP20
H226	32	11	7.5	IP20
H233	40	15	11	IP20
H263	63	22	18.5	IP20

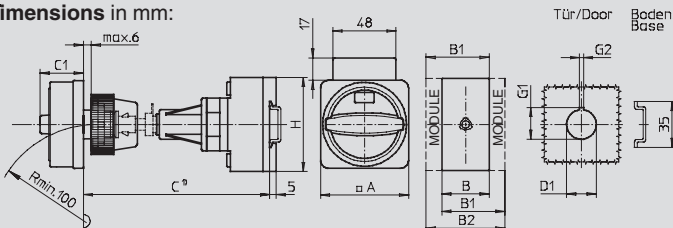
Detailed technical data page 108.

Switching progr.	Poles	Auxiliary contacts	
		n/o	n/c
41300	3	0	0
41311	3	1	1
41320	3	2	0
41400	4	0	0
41411	4	1	1
41420	4	2	0

Switching diagrams and further switching programmes (3 ... 4 pole) page 95.

Mounting form	Operator	Main/Emergency-Off Switch	Mounting form	Operator	Main Switch
281N4		N-padlock device yellow/red	281N1		N-padlock device black
281M4		M-padlock device yellow/red	281M1		M-padlock device black
281V4		padlockable with V-handle yellow/red	281V1		padlockable with V-handle silver/black

Dimensions in mm:



¹⁾ Internal depth: outside of door to top of DIN rail.

Metal shaft is not included. Please order separately, see page 103.

Mounting form	A	B	B1	B2	C1	D1	G1	G2	H
Types H216 / H220 / H226 / H233:									
281N4 / 281N1	67	36	48	60	33	22.5	24.2	3.2	70
281M4 / 281M1	67	36	48	60	38	22.5	24.2	3.2	70
281V4 / 281V1	48	36	48	60	32	22.5	24.2	3.2	70
Type H263:									
281N4 / 281N1	67	50	69	88	33	22.5	24.2	3.2	72
281M4 / 281M1	67	50	69	88	38	22.5	24.2	3.2	72
281V4 / 281V1	48	50	69	88	32	22.5	24.2	3.2	72