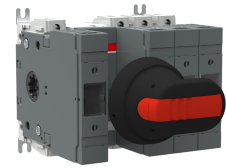


OS32GD13N2P



OS32GD13N2P Switch fuse

General Information

Extended Product Type	OS32GD13N2P
Product ID	1SCA123051R1001
EAN	6417019539096
Catalog Description	OS32GD13N2P Switch fuse
Long Description	Switch Fuses,Front Operated,4-pole,13 (Between the Poles),DIN,000,Handle and shaft included,Switched - With Solid Link

Popular Downloads

Data Sheet, Technical Information	1SCC311136D0201
Instructions and Manuals	1SCC311036M0212

Dimensions

Product Net Width	138 mm
Product Net Height	112 mm
Product Net Depth / Length	121 mm
Product Net Weight	1.62 kg

Technical

Rated Operational Current AC-21A (I_e)	(500 V) 32 A (690 V) 32 A
Rated Operational Current AC-22A (I_e)	(500 V) 32 A (690 V) 32 A
Rated Operational Current AC-23A (I_e)	(500 V) 32 A (690 V) 32 A
Rated Operational Power AC-23A (P_e)	(220 ... 240 V) 7.5 kW (400 V) 15 kW (415 V) 15 kW (500 V) 18.5 kW (690 V) 22 kW
Conventional Free-air Thermal Current (I_{th})	q = 40 °C 32 A
Conventional Thermal Current (I_{the})	Fully Enclosed 32 A
Rated Impulse Withstand Voltage (U_{imp})	12 kV
Rated Insulation Voltage (U_i)	1000 V
Rated Operational Voltage	500 V for 1 s 2.5 kiloampere rms

Rated Short-time Withstand Current (I_{cw})	
Rated Conditional Short-Circuit Current (I_{nc})	(690 V) 80 kA
Power Loss	at Rated Operating Conditions per Pole 7.5 W
Pollution Degree	3
Handle Type	Handle and shaft included
Fourth Pole Position	Right Side
Fourth Pole Type	Switched - With Solid Link
Switches Operating Mechanism	13 (Between the Poles)
Position of Line Terminals	Top In - Bottom Out Bottom In - Top Out
Fuse Size	000
Fuse System	DIN
Operating Mode	Front Operated
Standards	IEC 60947-3
Mounting Type	Base mounting
Number of Poles	4
Cable Cross-Section	2.5 ... 25 mm ²
Terminal Type	Screw Terminals
Tightening Torque	3 N·m 4 N·m

Certificates and Declarations (Document Number)

CCC Certificate	CCC OS32-63G_ 2016.pdf
Declaration of Conformity - CE	1SCC311136D2703
DNV GL Certificate	1SCC311125D0203
EAC Certificate	EAC OT_OTDC_OTL_OTP_OTR_OTU_OTE_OETL_OESA_OESC_OTM_OS_OSM_.pdf
Instructions and Manuals	1SCC311036M0212
RoHS Information	1SCC311108D0203

Container Information

Package Level 1 Units	1 piece
Package Level 1 Width	170 mm 6.7 in
Package Level 1 Depth / Length	190 mm 7.5 in
Package Level 1 Height	145 mm 5.7 in
Package Level 1 Gross Weight	1.8 kg 3.9 lb
Package Level 1 EAN	6417019539096

Classifications

Object Classification Code	Q
ETIM 4	EC001040 - Fuse switch disconnecter
ETIM 5	EC001040 - Fuse switch disconnecter
ETIM 6	EC001040 - Fuse switch disconnecter
ETIM 7	EC001040 - Fuse switch disconnecter
WEEE Category	5. Small Equipment (No External Dimension More Than 50 cm)

—
Categories

Low Voltage Products and Systems → Switches → Switch Fuses

