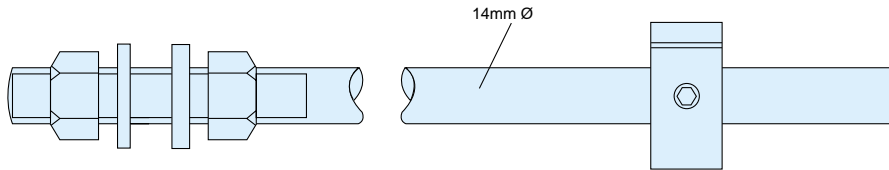


SHAFT ENCODER AND COUNTER ACCESSORIES

Accessories

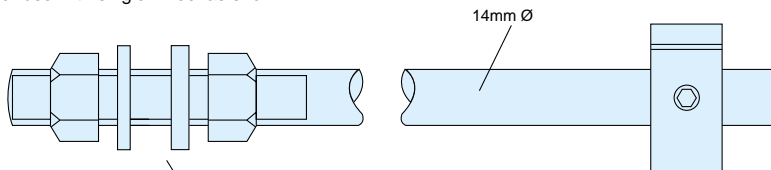
Stayrod 460mm long (015880-01)

For use in wider applications with twin wheels



Stayrod 200m long (015879-01)

For use with single wheel as shown



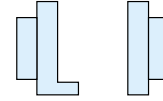
Stand (001647-01)



Couplings

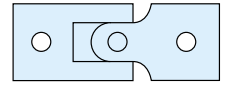
Four types of coupling are available

Disc Coupling



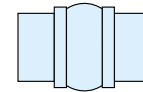
- 6.35mm, 0.25in (006675-01)
- 10mm with peg (009427-01)
- 10mm with slot (009427-02)

Plastic Universal Coupling



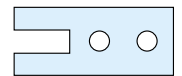
- 6.35mm, 0.25in (014575-01)

Flexible Rubber Coupling



- 6.35mm, 0.25in both ends (002033-01)
- 10mm, 0.394in both ends (002033-06)
- 6.35mm, one end 10mm other end (002033-05)

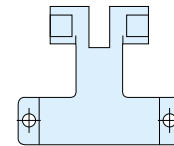
Forked Coupling



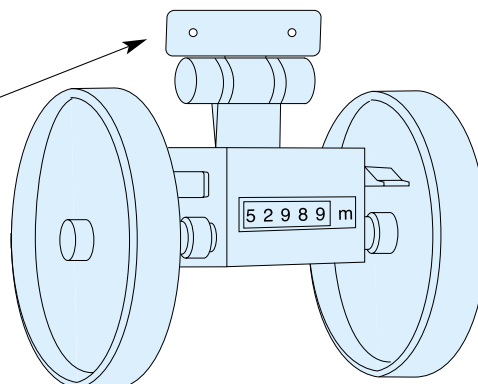
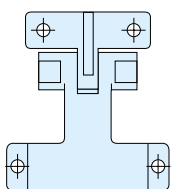
- 6.35mm, 0.25in (005825-01)

Counter Bracket

For use with Stayrod (015881-01)



Hinged Bracket (005697-01)



Ordering Information

- 005697-01 Hinged bracket
- 015879-01 Stayrod 200mm
- 015880-01 Stayrod 460mm
- 015881-01 Counter bracket
- 001647-01 Stand
- 102004-01 Flexible drive, 1m
- 102011-01 Flexible drive, 2m
- 014575-01 Plastic Universal Coupling 6.35mm (0.25in)
- 005825-01 Forked Coupling 6.35mm (0.25in)
- 006675-01 Disc Coupling 6.35mm (0.25in)
- 009427-01 Disc Coupling 10mm (0.394in) with peg
- 009427-02 Disc Coupling 10mm (0.394in) with slot
- 002033-01 Flexible Rubber Coupling 6.35mm – 6.35mm
- 002033-05 Flexible Rubber Coupling 6.35mm – 10mm
- 002033-06 Flexible Rubber Coupling 10mm – 10mm