



Medium Voltage Fuse Links

Fuse Links for use in Air, BS Type

3.6 kV - 12 kV, Back up Fuse Links, 5 - 125 Amps as per BS2692

Specifications

Description : A range of Medium Voltage Fuses, dimensions as per BS2692, complete with pyrotechnic striker, if provided, suitable for general protection purpose. Higher current rating can be obtained by using fuse links in parallel.

Suitable for Indoor & Outdoor use.

Ratings :

Volts : 3.6 kV - 12 kV
Amps : 5 - 125 Amps
Breaking Capacity : 20 kA - 40 kA

Standards / Approvals :

Comply with BS 2692-1 Dimensional Standard.

Dimensions (mm) :

Type Ref	φD(mm)
3.6 ADGHC*	50.8
7.2 BDGHC*	50.8
7.2 BFGHD*	76.2
12 BDGHC*	50.8
12 BFGHD*	76.2
12 AKGHD	76.2

* - Available in Single Hole Tag also, refer drg. & footnote below

Type Ref	φD(mm)
7.2 AEFMO	50.8
12 AEFMO	76.2

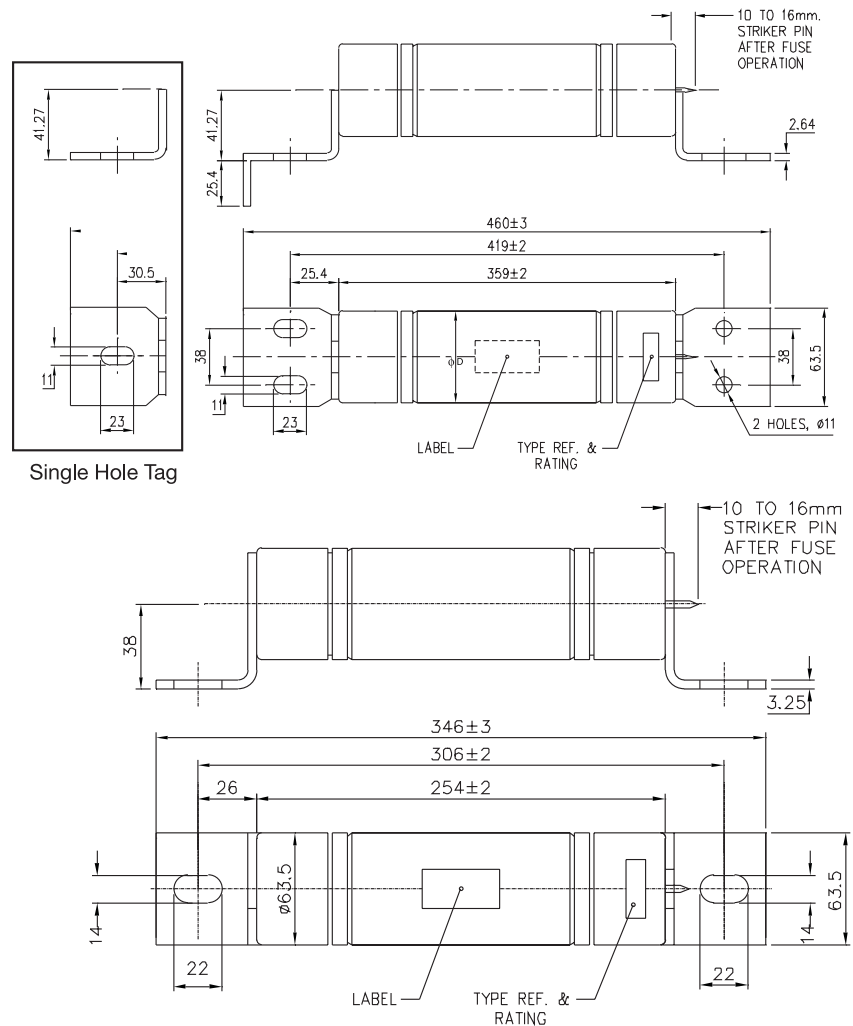


Table of ratings :

Voltage (KV)	Type Ref	Current Range	Breaking Capacity	Carton Qty
3.6	ADGHC*	5,10,15,20,25,30,40,45,50,60,70,75,80,90,100	25 kA	1
7.2	BDGHC*	6.3,10,16,20,25,31.5,35.5,40,45,50,56,60,63,71,80	40 kA	1
7.2	BFGHD*	45,50,60,65,75,90,100,112,120,125,140,150,160	20 kA	1
7.2	AEFMO	6.3,10,15,20,25,30,35,40,45,50,56,60,63,71,80,90	20 kA	1
12	AEFMO	3.7,4.7,7.5,12,15,16.8,18.75,22,26.6,30,33.75,37.5,42,47.25	20 kA	1
12	BDGHC*	6.3, 10,16,20,22.4,25,31.5,35.5,40,45,50	20 kA	1
12	BFGHD*	56,63,65,70,80,90,100,	20 kA	1
12	AKGHD	112,125	20 kA	1

* - Denotes Special Tag with Single Slot also available, only for these types, Add "S" at end for the same.
eg. : for 7.2 KV, 18.75A type AEFMO, catalogue no. will be **"7.2 AEFMO 18.75S"**.

Medium Voltage Fuses

Fuse Links for use in Oil Switchgear

7.2 kV - 12 kV, for use in Oil filled switchgear, 5 - 100 Amps

Specifications

Description : Range of oil tight current limiting fuses complete with pyrotechnic striker, if provided, to protect distribution circuits & switchgear. A unique triple seal system ensures against long term seal deterioration.

The range is not suitable for use inside oil filled transformer tanks where high oil temperatures are expected.

Suitable for Indoor & Outdoor use.

Ratings :

Volts : 7.2 kV - 12 kV

Amps : 5 - 100 Amps

Breaking Capacity : 40 kA - 45 kA

Standards / Approvals : Comply with IEC 282-1, BS 2692-1 & ESI Standard 12-8.

Dimensions (mm) :

Type Ref	DIM.C (mm)	φD (mm)	BS 2692 Dim. Ref
7.2 OEFMA	254	63.5	FO1
12 OEFMA	254	63.5	FO1
12 OHGMA	359	63.5	FO2

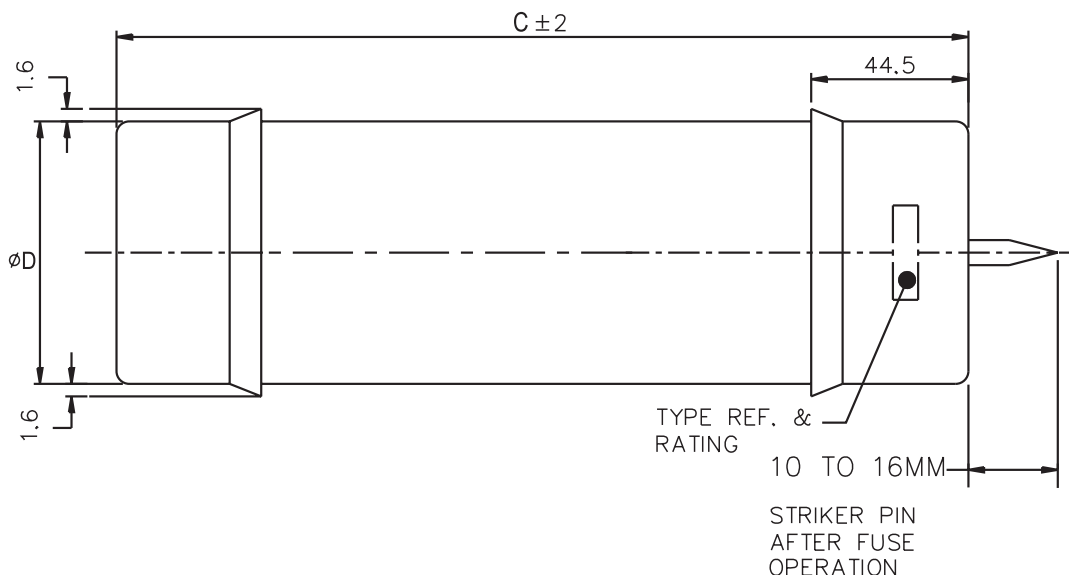


Table of ratings :

Voltage (KV)	Type Ref	Current Range	Breaking Capacity	Carton Qty
7.2	OEFMA	80, 100, 112	45 kA	1
12	OEFMA	6.3,10,16,20,25,31.5,40,50,63	40 kA	1
12	OHGMA	6.3,10,16,20,25,31.5,40,50,71,80,90,100	40 kA	1

Fuse Links for Voltage & Auxillary Transformer Protection

3.6 kV - 36 kV, for PT/VT Protection, 3.15 - 6.3 Amps

Specifications

Description : Range of fuselinks, designed for use on primary side of voltage transformers to provide system isolation in the event of faults occurring in the transformer circuits.

VT fuse links with breaking capacity upto 200kA for use at the output terminals of large turbo alternators can also be ordered.

Suitable for Indoor use only.

Range of fuses with prefix 'O' may be used under oil also.

Ratings :

Volts : 3.6 kV - 36 kV

Amps : 3.15 - 6.3 Amps

Breaking Capacity : 25 kA - 50 kA

Standards / Approvals :

Complies to BS 2692-1 & IEC 60282-1.

Dimensions (mm) :

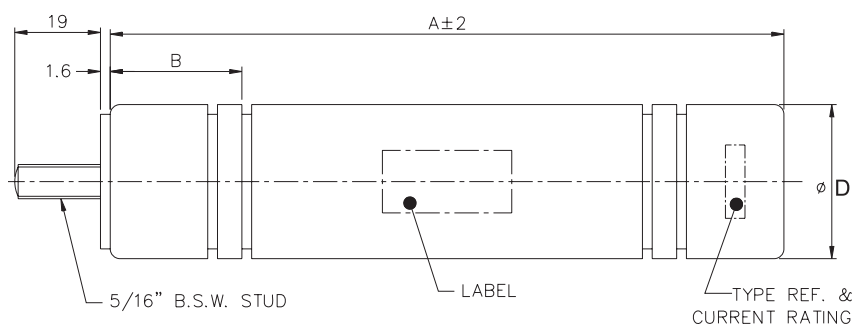
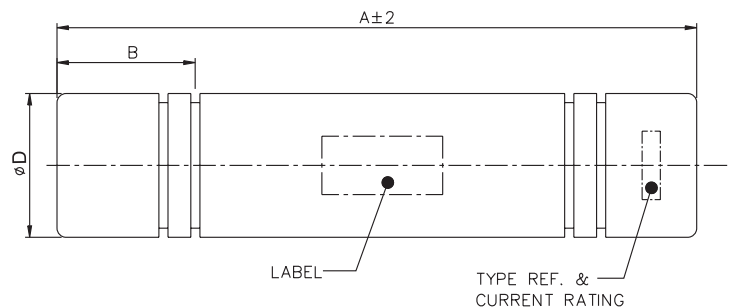
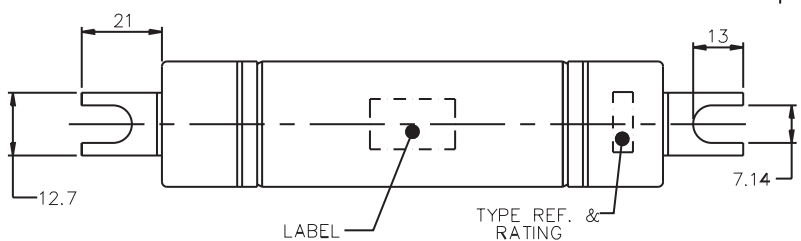
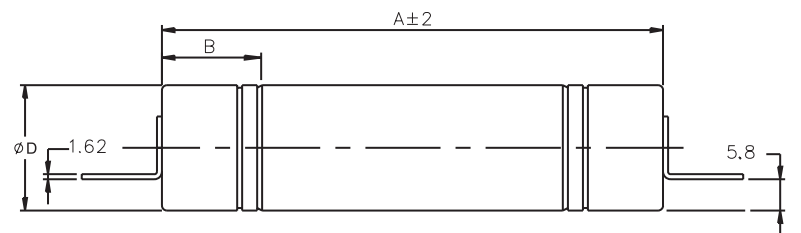
Type Ref	Dim.A (mm)	Dim.B (mm)	φD (mm)
3.6 ABWNT	142	30	25.4
7.2 ABCNT	195	30	25.4
12 ABCNT	195	30	25.4

Type Ref	Dim.A (mm)	Dim.B (mm)	φD (mm)
3.6 ABWNA	142	30	25.4
7.2 ABCNA	195	30	25.4
7.2 ABWNA	142	30	25.4
12 ABCNA	195	30	25.4
24 ABGNA	359	30	25.4
36 ABQNA	500	30	25.4

Type Ref	Dim.A (mm)	Dim.B (mm)	φD (mm)
3.6 ABWNS	142	30	25.4
7.2 ABCNS	195	30	25.4
12 ABCNS	195	30	25.4

Table of ratings :

Voltage (KV)	Type Ref	Current Range	Breaking Capacity	Carton Qty
3.6	ABWNA / ABWNS / ABWNT	3.15, 6.3	50 kA	1
7.2	ABCNA / ABCNS / ABCNT / ABWNA	3.15, 6.3	45 kA	1
12	ABCNA / ABCNS / ABCNT	3.15	45 kA	1
24	ABGNA	3.15	25 kA	1
36	ABQNA	3.15	25 kA	1



Medium Voltage Fuses

Fuse Links for Motor Protection

3.6 kV - 7.2 kV, for use in motor circuits, 5 - 355 Amps as per BS2692

Specifications

Description : Range of fuse links with striker if provided and designed to meet the specific requirements necessary for Medium Voltage motor starting and protection. Suitable for direct online or assisted starting. Provides short circuit protection in motor circuits to motor, starter & cables. Available in BS & DIN dimensions and ratings. **(for Motor DIN Dimensions & Table of ratings refer page no. 6)**

For use in indoor application only.

Ratings :

Volts : 3.6 kV - 7.2 kV

Amps : 5 Amps - 355 Amps

Breaking Capacity : 40 kA - 50 kA

Standards / Approvals : Comply with IEC 60282-1, IEC 6441, BS 5907 and dimensionally to BS 2692 & DIN 43625.

Dimensions (mm) :

Type Ref	Barrel		B (mm)	C (mm)	End Tag			
	A (mm)	D (mm)			E (mm)	F (mm)	G (mm)	H (mm)
3.6 WJON6#	192	36	235	257	9.5	13	25	23
3.6 WDOH6	192	51	235	261	10.5	13	25	29
3.6 WFOH6	192	76	235	261	10.5	20	64	42

- w/o Striker

Type Ref	Barrel		B (mm)	C (mm)
	A (mm)	D (mm)		
3.6 WDFHO	254	51	305	337
3.6 WFFHO	254	76	305	337
3.6 WKFHO	254	76	305	337
7.2 WFNHO	403	76	454	486
7.2 WKNHO	403	76	454	486
7.2 WFMH7	442	76	553	587
7.2 WKMH7	442	76	553	587

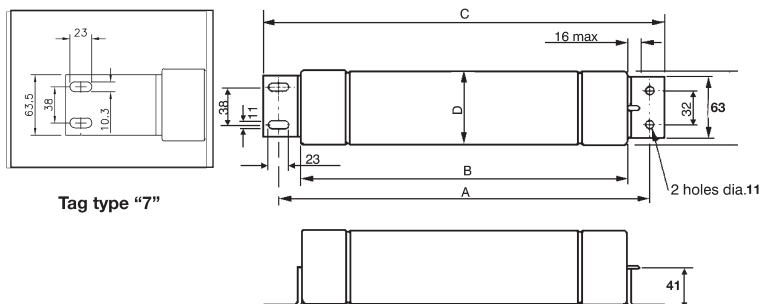


Table of ratings :

Voltage (KV)	Type Ref	Current Range	Breaking Capacity	Carton Qty
3.6	WJON6	5, 6.3, 10, 16, 20, 25, 31.5, 40, 50	50 kA	3
3.6	WDOH6	50, 63, 80, 100, 125	50 kA	3
3.6	WFOH6	160,200	50 kA	3
3.6	WDFHO	50, 63, 80, 100, 125	50 kA	3
3.6	WFFHO	160, 200	50 kA	3
3.6	WKFHO	250, 315, 355, 400	50 kA	3
7.2	WFNHO	25, 31.5, 40, 50, 63, 80, 100, 125, 160	40 kA	3
7.2	WKNHO	200, 224, 250, 315	40 kA	3
7.2	WFMH7	50, 63, 80, 100, 125, 160	40 kA	3
7.2	WKMH7	200, 224, 250, 315	40 kA	3

* - WDOH6 fuse links also available in the range 6.3 to 40A as code ADOH6

Fuse Links as per DIN 43625

3.6 kV - 12 kV, 6.3 - 200 Amps current limiting backup fuse links

Specifications

Description : Range of Medium Voltage DIN fuses, complete with sealed striker if provided suitable for transformer protection. The fuses can be used even when there is no secondary LV protection, provided these are used with fuse switches fitted with instantaneous striker tripping. Suitable for Indoor & Outdoor use.

Ratings:

Volts : 3.6 kV - 12 kV

Amps : 6.3 Amps - 200 Amps, higher voltage on request

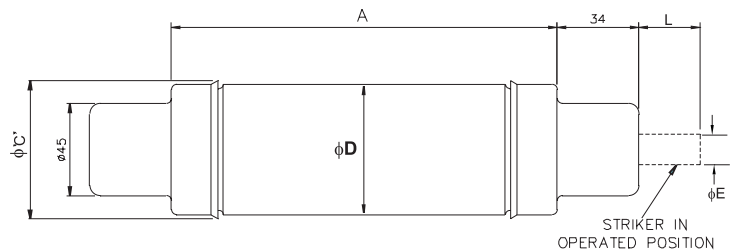
Breaking Capacity : 40 kA - 50 kA

Standards / Approvals : Comply with DIN dimensional standard DIN 43625, VDE 0670, Part IV & with IEC 60282-1 (2005).



Dimensions (mm) :

Type Ref	Barrel		CAP C (Max)	Striker
	A (mm)	D (mm)		
3.6 ADOSJ	192	51	54	S
3.6 ADLSJ	292	51	54	S
7.2 TDLSJ	292	51	54	S
7.2 TFLSJ	292	76	80	S
12 TDLEJ	292	51	54	E
12 THLEJ	292	64	67	E
12 TKLEJ	292	76	80	E
12 TXLEJ	292	88	88	E



Striker	L	φE	Force
S	26	15	50N
E	30	8	80N

Table of ratings :

Voltage (KV)	Type Ref	Current Range	Breaking Capacity	Carton Qty
3.6	ADOSJ	6.3, 10, 16, 20, 25, 31.5, 40	40 kA	3
3.6	ADLSJ	6.3, 10, 16, 20, 25, 31.5, 40	40 kA	3
7.2	TDLSJ	6.3, 10, 16, 20, 25, 31.5, 40, 50, 63	40 kA	3
7.2	TFLSJ	80, 100, 125, 160	40 kA	3
12	TDLEJ	6.3, 10, 16, 20, 25, 31.5, 40, 50, 63	50 kA	3
12	THLEJ	80,100	50 kA	3
12	TKLEJ	125	50 kA	3
12	TXLEJ	160, 200	63 kA	3

3.6 kV - 7.2 kV, DIN Type Motor Protection Fuse (for description & application refer page no. 5 of motor fuses)

Dimensions (mm) :

Type Ref	Barrel		CAP C (Max)
	A (mm)	D (mm)	
3.6 WDOSJ	192	51	51
3.6 WFOSJ	192	76	76
3.6 WDLSJ	292	51	51
3.6 WKLSJ	292	76	76
7.2 WFMSJ	442	76	76
7.2 WKMSJ	442	76	76

Table of ratings :

Voltage (KV)	Type Ref	Current Range	Breaking Capacity	Carton Qty
3.6	WDOSJ	50, 63, 80, 100, 125	50 kA	3
3.6	WFOSJ	160, 200	50 kA	3
3.6	WDLSJ	50, 63, 80, 100, 125, 160, 200	50 kA	3
3.6	WKLSJ	250, 315, 400	50 kA	3
7.2	WFMSJ	25, 31.5, 40, 50, 63, 80, 100, 125, 160	63 kA	3
7.2	WKMSJ	200, 224, 250, 315, 355	63 kA	3

Medium Voltage Fuses

Fuse Type Selection Chart

Letter	Refers	Code	Description
I	Type	O – FOR USE IN OIL A,B – for use in air	T,S – DIN RANGE W – MOTOR PROTECTION
II	Barrel Dia	B – 25.4 mm D – 50.8 mm E,H – 63.5 mm F, K – 76.2 mm	J – 35.0 mm
III	Barrel Length	W – 142 mm C, O – 192 mm F – 254 mm Q – 502 mm G – 359 mm	L – 292 mm N – 403 mm M – 442 mm
IV	Striker	H,M S E N	HEAVY TYPE TO BS 2692 (16 mm Stroke) SPRING STRIKER, MEDIUM TYPE, TO IEC 282-1 (26 mm Stroke / 50 N) SPRING STRIKER, MEDIUM TYPE, TO IEC 282-1 (30 mm Stroke / 80N) WITHOUT STRIKER
V	Tag	A B,C,D J O S T 6 7	NO TAGS TAGS TO BS 2692-1 Ref TA3 FERRULE TO DIN 43625 TAGS TO BS 2692 Ref TA2 FOR VT FUSE - 5/16" BSW STUD or 8mm metric TAG FOR VT USE TAGS TO BS 2692-1 TAGS TO BS 2692-1, FOR MOTOR FUSES

Ordering Key

Symbol							Meaning
1	2	3	4	5	6	7	
x							Rated Voltage of the fuse-link in kV
	x						The type of fuse-link by a single letter
		x					Diameter of the fuse-link barrel in mm denoted by a letter
			x				Length of the fuse-link barrel denoted by a letter
				x			Striker information: type of striker, if fitted, is denoted by a letter*
					x		Tag information type, if fitted, denoted by a letter
						x	Current rating of the fuse-link is give in Amperes

Ordering Code Information	Type Designation						
Rated Voltage of the Fuse-Link	12						
Type of Fuse-Link		B					
Body Diameter			D				
Body Length				G			
Type of Striker					H		
Type of Tag						C	
Current Rating							50
Complete Part Number	12	B	D	G	H	C	50

Part number **12BHGH50** represents an Air fuse rated at **12kV** for use in **Air (B)** with a body diameter of **50.8mm (D)**, a barrel length of **359mm (G)**, a striker to **BS 2692 16mm Stroke (H)**, a tag arrangement to **BS 2692 (C)** and an Amp rating of **50A**

Cooper Bussmann Products And Technical Expertise Delivered Worldwide

Customer Assistance

Customer Satisfaction Team

Cooper Bussmann India Customer Satisfaction Team is available in Pondicherry to answer questions regarding Cooper Bussmann products Sales, Supply and Services. Calls should be made between 9.00 am - 5.00pm IST.

- Phone : +91 413 267 2015
- Fax : +91 413 267 8182
- E-mail : sales@cooperbussmann.co.in

Application Engineering

Application Engineering and selection assistance is available to all customers. This team is staffed by subject matter expert, electrical application engineers and available Monday - Friday 9.00am - 5.00pm IST. Application Engineering can be reached via

- Phone : +91 413 220 5512
- Fax : +91 413 220 5501
- E-mail : technicalhelp@cooperbussmann.co.in

Regional Contacts

Ahmedabad : +91 98793 55485	Jaipur : + 91 94141 19288
Bangalore : +91 98451 75290	Kolkata : +91 94330 07468
Chennai : + 91 98403 26095	Mumbai : +91 98206 48785
Coimbatore : +91 99449 53779	Delhi : + 91 98110 86586
Hyderabad : +91 98490 23461	Pune : +91 98226 97408

Regional E-mails

For E-mail, prefix cityname to sales@cooperbussmann.co.in
Example, for Delhi, write - **delhi**sales@cooperbussmann.co.in

Web services

www.cooperbussmann.com/1/technicalinformation.html

Cooper Bussmann website offers free information & resources that include:

- Products data sheets and complete technical information.
- Latest European & US Catalogues.
- Safety BaSICs™ for the essentials of electrical safety.
- Training modules for increasing skill levels of customers and end users.
- Cross referencing to find the correct Cooper Bussmann replacement for a competitor's fuse.

Your Authorised Cooper Bussmann Distributor is :