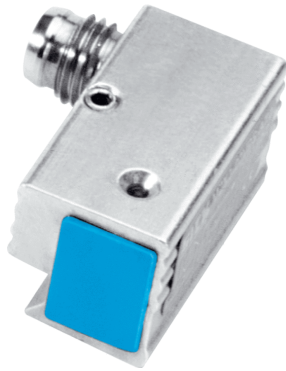


# MZK1-02VPS-AUB

MZK1

PRODUCT PORTFOLIO

**SICK**  
Sensor Intelligence.



### Ordering information

Type	Part no.
MZK1-02VPS-AUB	1019348

Other models and accessories → [www.sick.com/MZK1](http://www.sick.com/MZK1)



### Detailed technical data

#### Features

<b>Cylinder type</b>	Dovetail groove cylinder
<b>Housing length</b>	26 mm
<b>Output type</b>	PNP
<b>Switching frequency</b>	5,000 Hz
<b>Output function</b>	NO
<b>Electrical wiring</b>	DC 3-wire
<b>Enclosure rating</b>	IP67 <sup>1)</sup>
<b>Sensing face</b>	Front

<sup>1)</sup> According to EN 60529.

#### Mechanics/electronics

<b>Supply voltage</b>	10 V DC ... 30 V DC
<b>Power consumption</b>	≤ 10 mA <sup>1)</sup>
<b>Voltage drop</b>	≤ 1.5 V <sup>2)</sup>
<b>Continuous current I<sub>a</sub></b>	≤ 300 mA
<b>Time delay before availability</b>	≤ 2 ms
<b>Response sensitivity, typ.</b>	2 mT
<b>Reproducibility</b>	≤ 0.1 mm <sup>3)</sup>
<b>Reverse polarity protection</b>	✓
<b>Short-circuit protection</b>	✓
<b>Power-up pulse protection</b>	✓
<b>Ambient operating temperature</b>	-25 °C ... +75 °C
<b>Shock and vibration resistance</b>	30 g, 11 ms / 10 ... 55 Hz, 1 mm

<sup>1)</sup> Without load.

<sup>2)</sup> At I<sub>a</sub> max.

<sup>3)</sup> U<sub>b</sub> and T<sub>a</sub> constant.

<b>EMC</b>	According to EN 60947-5-2
<b>Housing material</b>	Metal, Aluminum
<b>Sensing face material</b>	Plastic, Plastic
<b>Connection type</b>	Cable, 3-wire, 5 m
<b>Cable material</b>	PUR
<b>Conductor cross-section</b>	0.25 mm <sup>2</sup>

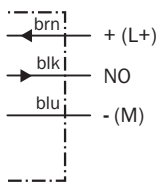
- 1) Without load.
- 2) At I<sub>a</sub> max.
- 3) U<sub>b</sub> and T<sub>a</sub> constant.

**Classifications**

<b>ECI@ss 5.0</b>	27270104
<b>ECI@ss 5.1.4</b>	27270104
<b>ECI@ss 6.0</b>	27270104
<b>ECI@ss 6.2</b>	27270104
<b>ECI@ss 7.0</b>	27270104
<b>ECI@ss 8.0</b>	27270104
<b>ECI@ss 8.1</b>	27270104
<b>ECI@ss 9.0</b>	27270104
<b>ETIM 5.0</b>	EC002544
<b>ETIM 6.0</b>	EC002544
<b>UNSPSC 16.0901</b>	39122230

**Connection diagram**

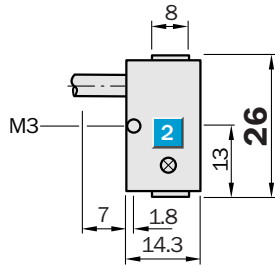
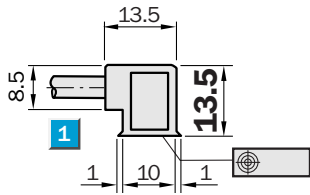
Cd-001



**Functional principle**



### Dimensional drawing (Dimensions in mm (inch))



- ① Connection
- ② Indication LED

## SICK AT A GLANCE

SICK is one of the leading manufacturers of intelligent sensors and sensor solutions for industrial applications. A unique range of products and services creates the perfect basis for controlling processes securely and efficiently, protecting individuals from accidents and preventing damage to the environment.

We have extensive experience in a wide range of industries and understand their processes and requirements. With intelligent sensors, we can deliver exactly what our customers need. In application centers in Europe, Asia and North America, system solutions are tested and optimized in accordance with customer specifications. All this makes us a reliable supplier and development partner.

Comprehensive services complete our offering: SICK LifeTime Services provide support throughout the machine life cycle and ensure safety and productivity.

For us, that is “Sensor Intelligence.”

## WORLDWIDE PRESENCE:

Contacts and other locations – [www.sick.com](http://www.sick.com)