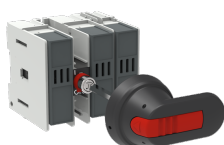


PRODUCT-DETAILS

OS32FB12A1

OS32FB12A1 SWITCH FUSE



General Information

Extended Product Type	OS32FB12A1
Product ID	1SCA108840R1001
EAN	6417019421155
Catalog Description	OS32FB12A1 SWITCH FUSE
Long Description	Switch Fuses,Front Operated,3-pole,12 (Between the Poles),British Standard,A1,Handle and shaft not included,

Circular Value

Conflict Minerals Reporting Template (CMRT)	9AKK108467A5658
REACH Declaration	1SCC011021D0201
RoHS Information	1SCC011020D0201

Ordering

Minimum Order Quantity	1 piece
Customs Tariff Number	85365080
Country of Origin	Lithuania (LT)

Popular Downloads

Data Sheet, Technical Information	1SCC311013C0201
Instructions and Manuals	1SCC311030M0202

Dimensions

Product Net Width	106 mm
Product Net Height	97 mm
Product Net Depth / Length	105 mm
Product Net Weight	0.59 kg 1.3 lb

Technical

Rated Operational Current AC-21A (I_e)	(500 V) 32 A (690 V) 32 A
Rated Operational Current AC-22A (I_e)	(500 V) 32 A (690 V) 32 A
Rated Operational Current AC-23A (I_e)	(500 V) 32 A (690 V) 32 A
Rated Operational Power AC-23A (P_e)	(220 ... 240 V) 7.5 kW (400 V) 15 kW (415 V) 15 kW (500 V) 18.5 kW (690 V) 22 kW
Conventional Free-air Thermal Current (I_{th})	$\Theta = 40\text{ °C}$ 32 A
Conventional Thermal Current (I_{the})	Fully Enclosed 32 A
Rated Impulse Withstand Voltage (U_{imp})	12 kV
Rated Insulation Voltage (U_i)	1000 V
Rated Operational Voltage	Main Circuit 690 V AC
Rated Short-time Withstand Current Low Voltage (I_{cw})	for 1 s 1 kiloampere rms
Rated Conditional Short-Circuit Current (I_{nc})	(690 V) 80 kA
Power Loss	at Rated Operating Conditions per Pole 3.5 W
Pollution Degree	3
Handle Type	Handle and shaft not included
Switches Operating Mechanism	12 (Between the Poles)
Position of Line Terminals	Top In - Bottom Out, Bottom In - Top Out
Fuse Size	A1
Fuse System	British Standard
Operating Mode	Front Operated
Standards	IEC 60947-3
Mounting Type	Base mounting
Number of Poles	3
Cable Cross-Section	2.5 ... 25 mm ²
Terminal Type	Screw Terminals
Tightening Torque	2 N·m

Rated Current (I_n)

Main Circuit 32 A

Technical UL/CSA

Tightening Torque

2 N·m

Environmental

RoHS Status

Following EU Directive 2011/65/EU and Amendment 2015/863 July 22, 2019

Certificates and Declarations

Declaration of Conformity
- CE

1SCC311136D2703

DNV GL Certificate

1SCC311125D0203

EAC Certificate

EAC
OT_OTDC_OTL_OTP_OTR_OTU_OTE_OETL_OESA_OESC_OTM_OS_OS
M_.pdf

REACH Declaration

1SCC011021D0201

Container Information

Package Level 1 Units

box 1 piece

Package Level 1 Width

130 mm
5.12 inPackage Level 1 Depth /
Length234 mm
9.21 in

Package Level 1 Height

130 mm
5.12 inPackage Level 1 Gross
Weight0.7 kg
1.54 lb

Package Level 1 EAN

6417019421155

Classifications

Object Classification Code

Q

ETIM 4

EC001040 - Fuse switch disconnecter

ETIM 5

EC001040 - Fuse switch disconnecter

ETIM 6

EC001040 - Fuse switch disconnecter

ETIM 7

EC001040 - Fuse switch disconnecter

ETIM 8

EC001040 - Fuse switch disconnecter

ETIM 9

EC001040 - Fuse switch disconnecter

eClass

V11.1 : 27371401

WEEE Category

5. Small Equipment (No External Dimension More Than 50 cm)

E-Number (Finland)

3661966

Categories

Low Voltage Products and Systems → Switches → Switch Fuses

