

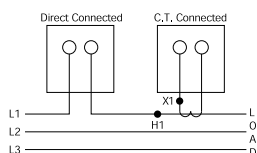
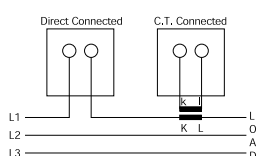
Moving Iron AC Ammeters and Voltmeters

Designed to measure AC current or voltage, these meters indicate true RMS values and are substantially independent of system waveform. Scales are calibrated down to 20%, and ammeters can have overload scales of x2, x3, x5 or x6 for motor start duty. Ammeters can be supplied for use with -/1A or -/5A current transformers, whilst voltmeters can be scaled for use with voltage transformers. Meters can be used to measure DC at reduced accuracy.

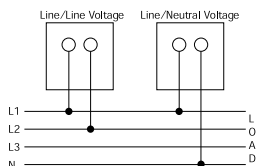


Connections

AC Ammeter



AC Voltmeter



Specifications

| | |
|-----------------|---|
| Accuracy: | Class 1.5 |
| Frequency: | 50 or 60Hz, (400Hz on request) |
| Burden at 50Hz: | Ammeters: 0.5VA voltmeters: Up to 4.5VA maximum |
| Ratings: | Ammeters: 0.5-100A AC direct connected (40A for E242-75A and E246-02A) Maximum system voltage 600V AC Low load/high middle, maximum 10A |
| Voltmeters: | 6-600V |

Product Codes

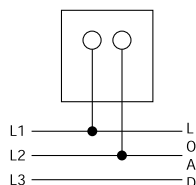
| | | | | |
|---------------------|-----------|-----------|-----------|----------|
| Bezel size mm | 48 | 72 | 96 | 144 |
| Scale length mm | 42 | 65 | 94 | 145 |
| AC ammeter | E242-75A | E243-02A | E244-02A | E246-02A |
| x2 overload ammeter | E242-752A | E243-022A | E244-022A | - |
| x3 overload ammeter | E242-753A | E243-023A | E244-023A | - |
| x5 overload ammeter | E242-755A | E243-025A | E244-025A | - |
| x6 overload ammeter | E242-756A | E243-026A | E244-026A | - |
| AC voltmeter | E242-75V | E243-02V | E244-02V | E246-02V |

Frequency Meters

Frequency meters use an integral electronic converter and a moving coil indicator. These easy to read meters have accuracy Class 0.5.



Connections



Specifications

| | |
|------------|--|
| Ratings: | 100-125V AC 200-250V AC 380-440V AC* 500V AC* *Use E242-89A and 253-THZ in place of E242-41S for voltages over 380V Models available for use with VTs |
| Frequency: | 0.5%: 45/55Hz, 55/65Hz, 45/65Hz, 360/440Hz |
| Burden: | 4VA maximum |

Product Codes

| | | | |
|----------------------|----------|----------|----------|
| Bezel size mm | 48 | 72 | 96 |
| Scale length mm | 42 | 65 | 94 |
| Product codes | E242-41S | E243-41S | E244-41S |