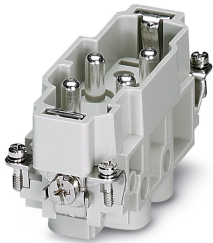


## Contact insert - HC-K 4/0-ESTS - 1679414


Please be informed that the data shown in this PDF Document is generated from our Online Catalog. Please find the complete data in the user's documentation. Our General Terms of Use for Downloads are valid (<http://phoenixcontact.com/download>)



HEAVYCON plug insert, K4/0 series, 4-pos., screw connection without wire protection



### Key Commercial Data

Packing unit	1 pc
GTIN	 4 017918 168858
GTIN	4017918168858
Weight per Piece (excluding packing)	115.800 g
Custom tariff number	85366990
Country of origin	China
Sales Key	BF7ABA

### Technical data

#### General

Note	For HEAVYCON-ADVANCE housings of B16 type and HEAVYCON housings of B16 and B32 types
	Connectors may be operated only when there is no load/voltage.
Connection method	Screw connection (power contacts)
Tightening torque	3 Nm (4.0 mm <sup>2</sup> ... 16 mm <sup>2</sup> )
	2 Nm (2.5 mm <sup>2</sup> )
	1.2 Nm (1.5 mm <sup>2</sup> )
Torque	0.8 Nm ... 1.2 Nm (PE connection)
	0.5 Nm ... 0.8 Nm (Mounting screws for mounting in the HEAVYCON housing)
Screwdriver blade	0.8 x 4.5 mm (power contacts)
Degree of pollution	3
Overvoltage category	III
Number of positions	4+PE

# Contact insert - HC-K 4/0-ESTS - 1679414

## Technical data

### General

No. of power contacts	4
No. of control contacts	0
Insertion/withdrawal cycles	≥ 500
Size	B16
	B32
Contact numbering	1 - 4
Conductor cross section	1.5 mm² ... 16 mm²
Connection cross section AWG	16 ... 6
Stripping length of the individual wire	14 mm
Assembly instructions	To ensure correct use, installation in housing with IP54 protection or better is required
Connection	Use wire end protection (screw connections do not have wire protection)

### Ambient conditions

Ambient temperature (operation)	-40 °C ... 125 °C
---------------------------------	-------------------

### Material data

Contact material	Cu alloy
Contact surface material	Ag
Material of contact surface, power contact	Ag
Contact carrier material	PC

### Electrical characteristics

Rated voltage (III/3)	830 V (power contacts)
Rated surge voltage	8 kV (power contacts)
Rated current	80 A (power contacts)

### Standards and Regulations

Connection in acc. with standard	CSA
Flammability rating according to UL 94	V0

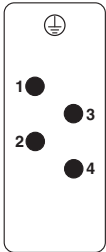
### Environmental Product Compliance

China RoHS	Environmentally Friendly Use Period = 50 years
	For details about hazardous substances go to tab "Downloads", Category "Manufacturer's declaration"

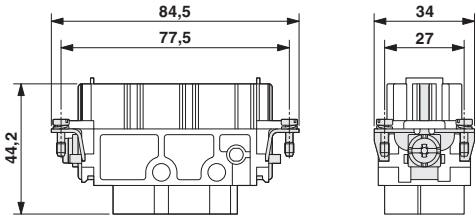
## Drawings

Contact insert - HC-K 4/0-ESTS - 1679414

Schematic diagram

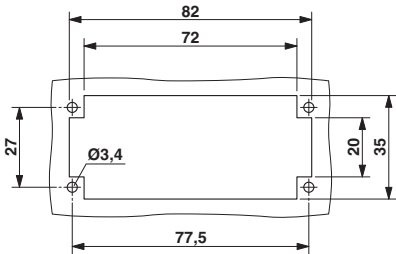


Dimensional drawing



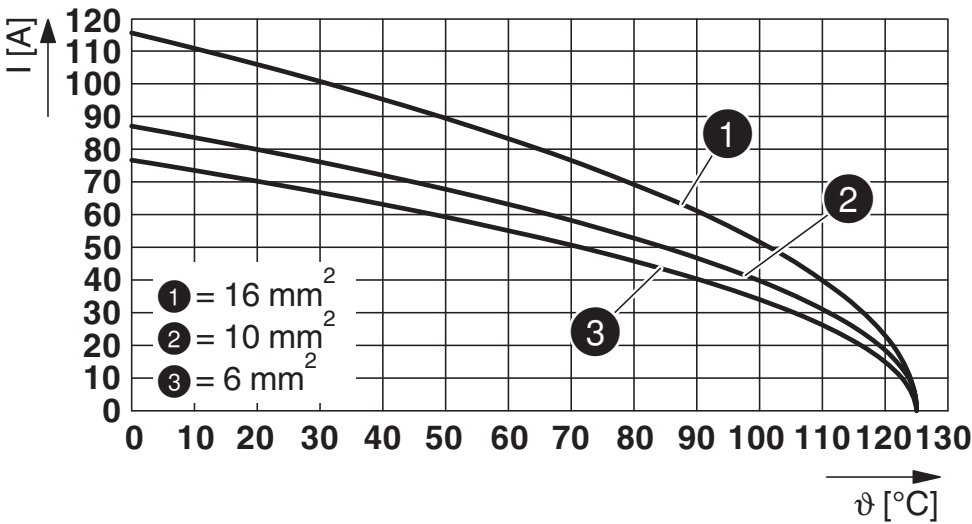
Connector pin assignment, connection side      Male insert

Dimensional drawing



Mounting cutout when used without housing

Diagram



Derating diagram

Classifications

eCl@ss

eCl@ss 10.0.1	27440205
eCl@ss 11.0	27440205

## Contact insert - HC-K 4/0-ESTS - 1679414

### Classifications

#### eCl@ss

eCl@ss 4.0	27140800
eCl@ss 4.1	27140800
eCl@ss 5.0	27143400
eCl@ss 5.1	27261200
eCl@ss 6.0	27261200
eCl@ss 7.0	27440205
eCl@ss 9.0	27440205

#### ETIM

ETIM 2.0	EC000438
ETIM 3.0	EC000438
ETIM 4.0	EC000438
ETIM 6.0	EC000438
ETIM 7.0	EC000438

#### UNSPSC

UNSPSC 6.01	30211923
UNSPSC 7.0901	39121522
UNSPSC 11	39121522
UNSPSC 12.01	39121522
UNSPSC 13.2	39121522
UNSPSC 18.0	39121522
UNSPSC 19.0	39121522
UNSPSC 20.0	39121522
UNSPSC 21.0	39121522

### Approvals

#### Approvals

---

Approvals


EAC / EAC / UL Recognized

---

Ex Approvals

---


#### Approval details

EAC		RU C- DE.AI30.B.01102
-----	---	--------------------------

## Contact insert - HC-K 4/0-ESTS - 1679414

### Approvals

EAC		RU C- DE.BL08.B.00511
-----	---	--------------------------

UL Recognized		<a href="http://database.ul.com/cgi-bin/XYV/template/LISEXT/1FRAME/index.htm">http://database.ul.com/cgi-bin/XYV/template/LISEXT/1FRAME/index.htm</a>	E118976
Nominal voltage UN		600 V	
Nominal current IN		80 A	
mm²/AWG/kcmil		6	

### Accessories

#### Accessories

#### Coding element

Coding bolt - HC-CB - 1772722



Coding pin, prevents mismating of up to six connectors with an identical number of positions

Coding element - HC-CST - 1676857



Coding peg for coding up to 16 connectors

Coding element - HC-CBU - 1676860



Coding socket for coding up to 16 connectors

### Screwdriver tools

## Contact insert - HC-K 4/0-ESTS - 1679414

### Accessories

Screwdriver - SZF 2-0,8X4,0 - 1204520



Actuation tool, for ST terminal blocks, also suitable for use as a bladed screwdriver, size: 0.8 x 4.0 x 100 mm, 2-component grip, with non-slip grip

---

### Additional products

Contact insert - HC-K 4/0-EBUS - 1679427



HEAVYCON socket insert, K4/0 series, 4-pos., screw connection without wire protection