

# V4073A

## Motorised Mid-Position Valve

### INSTALLATION INSTRUCTIONS

### APPLICATION

The V4073A valve has been designed to control the flow of water in a small bore domestic central heating system where both radiator and hot water cylinder circulation are pumped. It is typically suited for systems up to 90,000 Btu/h (26 KW).

### SPECIFICATIONS

**Voltage:** 230V ~ 50 Hz

**Power Consumption:** 6W

**Lead Supplied:** 1 metre, 5 core

**Operating Temperature Range:** +5 to +88° C  
(Special models available for chilled water applications)

**Maximum Ambient Temperature:** +52° C

**Pipe Fitting Sizes:** 22 mm & 28 mm compression fitting,  
3/4" & 1" BSP

**Dimensions and KV values:** See diagrams

### SPARES AVAILABLE

Powerhead Part No. 40003916-003/U

Motor Part No. 40002737-003/U

Ball & O-Ring Kit Part No. 272742A/U

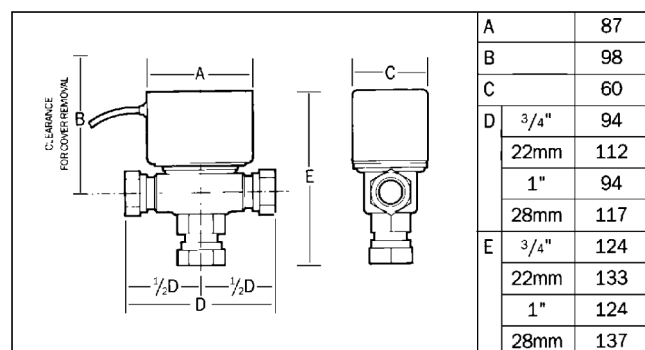


Fig. 1. Dimensions

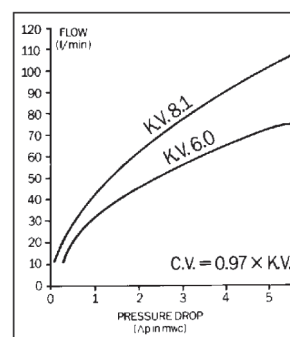
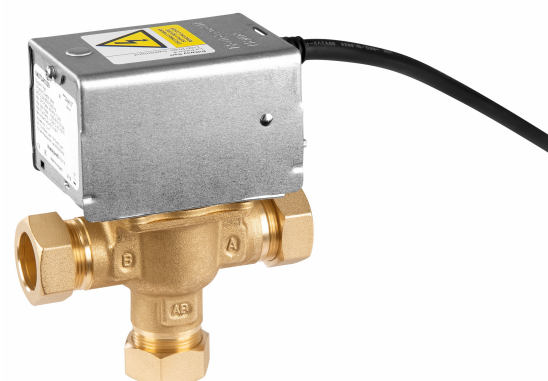
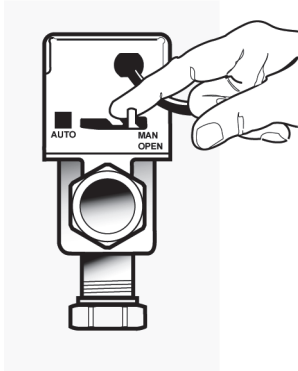


Fig. 2. Flow Characteristics

## INSTALLATION

V4073A incorporates a manual lever, the lever should normally be in 'AUTO' position, but can be moved to 'MAN. OPEN' position for system draindown and filling purposes only.



Before fitting the valve, read through the plumbing and wiring instructions.

This product **MUST** be installed by a competent person. The installation **MUST** conform to I.E.T. Regulations and with The Electricity at Work Regulations.

A Class 'A' switch (having contact separation of at least 3 mm in all poles) must be incorporated in the fixed wiring as a means of disconnecting the supply. The system must be appropriately fused.

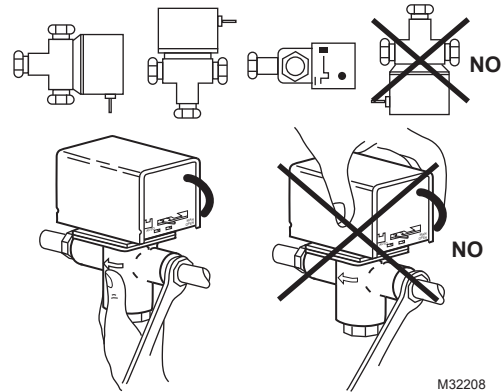
## PLUMBING

The valve **MUST NOT** be fitted on the return pipework under any circumstances. Flow from the boiler must be connected to port AB, the radiator circuit to port A and the hot water cylinder circuit port B.

The valve may be plumbed in at any angle, but must not be mounted so that the valve head is below the horizontal level of the pipework. In the unlikely event of a leak, a safety hazard could result.

Do not grip the valve head while making and tightening up plumbing connections. Attach a spanner (32 mm or 1 1/4" AF) onto the valve body at each port, whilst tightening up the nuts. Tighten compression nuts enough to make a watertight seal.

TAKE CARE NOT TO OVERTIGHTEN.



## WIRING

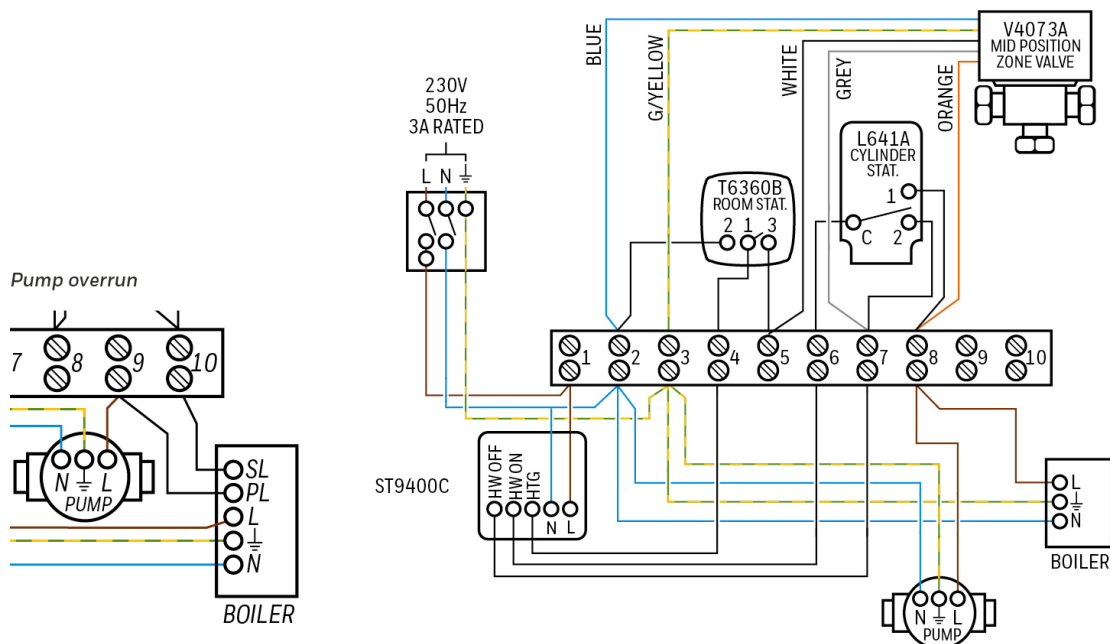
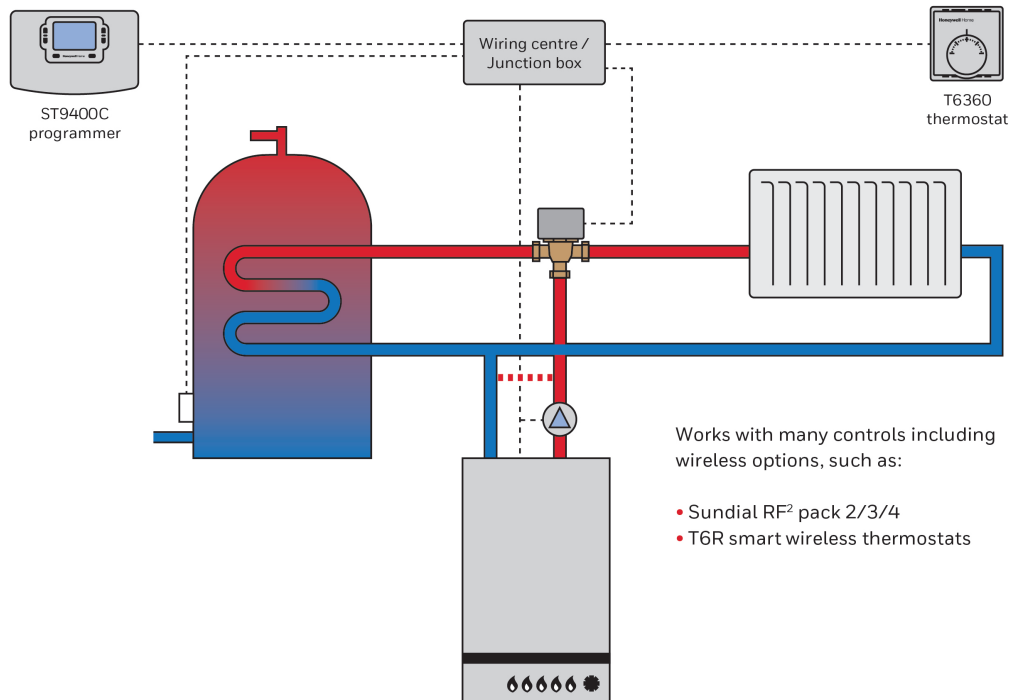
The wiring diagram below shows relevant connections to a Resideo junction box (Part No. 42002116-002). Ensure that each numbered, lettered or coloured wire is connected to the correct terminal in the junction box. Make sure all connections are good and all terminal screws are firmly tightened.

Valve wiring configuration is:

White	= Heating on
Grey	= Hot water off
Orange	= Boiler and pump live
Blue	= Neutral
Green/Yellow	= Earth

NOTES:

- Wiring diagram shows connections to a programmer with separate control of heating and hot water.
- If the programmer or time clock have no 'Hot water OFF' terminal, then the time clock will need to be replaced.
- If replacing a 6 wire relay model valve with a non-relay 5 wire valve, contact Resideo for advice.

**"Y" Plan****Note:**

It is recommended that either the 10 way junction box or Sundial wiring centre should be used to ensure first time, fault free wiring.

## CHECKOUT PROCEDURE

To ensure the valve is plumbed and wired correctly, carry out the following checks after filling the system and switching on the power:

1.
  - a. Check the manual lever is in 'AUTO' position.
  - b. Check programmer has power.
  - c. Check boiler is switched on and its thermostat set to maximum.
2. Confirm correct hot water functions as follows:
  - a. Turn room thermostat to minimum setting or switch off at programmer.
  - b. Set cylinder thermostat to maximum and programmer to 'HOT WATER ON'.
  - c. Boiler should fire and pump should run. Feel pipe approximately 12" from valve port B, it should get hot.
3. Confirm correct heating functions as follows:
  - a. Turn cylinder thermostat to minimum or switch off at programmer.
  - b. Set room thermostat to maximum and programmer to 'CENTRAL HEATING ON'.
  - c. Boiler should fire and pump should run. Feel pipe approximately 12" from port A, it should get hot.
4. Confirm valve is functioning at mid position by switching 'HEATING ON' and 'HOT WATER ON' at the programmer. Set both thermostat to maximum, feel pipes approximately 12" from both ports A and B. Both pipes should get hot.

## COMPLETION

Reset both thermostats to temperature required, normally 60° C for cylinder thermostat and 20° C for room thermostat. Return programmer to 'Auto' or mode selected by householder. Full installation, wiring and operating instructions for products are included in every product pack. For special wiring diagrams or applications, contact Resideo.

For other relevant plans, please scan the QR code to access the Honeywell Home wiring guide app. Resideo Academy supports heating and plumbing professionals with training from our industry and product experts. Scan the QR code to access the Resideo Academy online or download our app.

### Wiring Guide



### Wiring Guide



### Resideo Academy online



### WEEE Directive 2012/19/EU

The product (and contained batteries) should not be disposed of with other household waste. Check for the nearest authorized collection centers or authorized recyclers. The correct disposal of end-of-life equipment will help prevent potential negative consequences for the environment and human health.



www.resideo.com

Manufacturer for European Region:  
Pittway Sarl, Z.A. La Piece 6,  
1180 Rolle, Switzerland

Country of origin: Hungary  
ENOH-2804GE23 R0523 M.S. Rev. 04-23| Printed in Hungary

Manufacturer for North and South America Region:  
Resideo Technologies, Inc.  
1985 Douglas Drive North, Golden Valley, MN 55422  
1-800-468-1502