

SWITCH DISCONNECTOR 63A, SIZE 1, 4-POLE LATERAL DRIVE
LEFT BASIC UNIT WITHOUT HANDLE BOX TERMINAL



Model	
Product brand name	SENTRON
Product designation	3KD switch disconnecter
Design of the product	Switch
Display version / for switch position indicator door-coupling rotary operating mechanism	ON-OFF
Design of the operating mechanism	Without handle
Type of the driving mechanism / motor drive	No
General technical data	
Number of poles	4
Type of device	fixed mounting
Size of switch disconnecter	1
Electrical endurance (switching cycles)	
<ul style="list-style-type: none"> at AC-23 A / at 690 V / at 50/60 Hz 	6 000
<ul style="list-style-type: none"> at DC-23 A / at 440 V 	1 500
<ul style="list-style-type: none"> I²t value / with closed switch / for combination switch + fuse / at 500 V / maximum 	13 300 A ² ·s
<ul style="list-style-type: none"> I²t value / with closed switch / for combination switch + fuse / at 400 V / maximum 	13 300 A ² ·s

• I2t value / with closed switch / at 690 V / for combination switch + gG fuse / maximum	13 700 A ² ·s
circuit-breaker / Design	3KD2
Mechanical service life (switching cycles) / typical	15 000
Position / of the switch operating mechanism	at the left end
Overvoltage category	III

Voltage

Operating voltage / with current paths in series	
• with degree of pollution 2 / at DC / rated value / Note	440 V / 3
• with degree of pollution 3 / at DC / rated value / Note	440 / 3
Insulation voltage	
• rated value	1 000 V
Surge voltage resistance / rated value	8 kV
Overvoltage in percent / relative to the operating voltage / at AC / at 50/60 Hz	10 %

Protection class

Protection class IP	IP20
Protection class IP	
• with closed switch / with cover or cable lug cover	IP20
• on the front	IP20

Dissipation

Power loss [W]	
• with conventional rated thermal current / per pole	1 W
• with conventional rated thermal current / per device	4 W
• for rated value of the current / at AC / in hot operating state / per pole	1 W
• maximum	4 W

Electricity

Operating current	
• at AC-21 A / at 400 V / maximum	63 A
• at AC-21 A / at 500 V / maximum	63 A
• at AC-21 A / at 690 V / maximum	63 A
• at AC-23 A / at 500 V / at 50/60 Hz / rated value / maximum	63 A
• at AC-22 A / at 500 V / at 50/60 Hz / rated value / maximum	63 A

<ul style="list-style-type: none"> • at AC-22 A / at 400 V / at 50/60 Hz / rated value / maximum 	63 A
<ul style="list-style-type: none"> • at AC-22 A / at 690 V / at 50/60 Hz / rated value / maximum 	63 A
<ul style="list-style-type: none"> • at AC-23 A / at 400 V / at 50/60 Hz / rated value / maximum 	63 A
<ul style="list-style-type: none"> • at AC-23 A / at 690 V / at 50/60 Hz / rated value / maximum 	63 A
Current / at AC / rated value	63 A
Continuous current	
<ul style="list-style-type: none"> • rated value 	63 A
<ul style="list-style-type: none"> • at 40 °C / rated value 	63 A
<ul style="list-style-type: none"> • at 45 °C / rated value 	63 A
<ul style="list-style-type: none"> • at 50 °C / rated value 	63 A
<ul style="list-style-type: none"> • at 55 °C / rated value 	63 A
<ul style="list-style-type: none"> • at 60 °C / rated value 	63 A
<ul style="list-style-type: none"> • at 65 °C / rated value 	63 A
<ul style="list-style-type: none"> • at 70 °C / rated value 	63 A
Continuous current / at DC / rated value	63 A
Let-through current / with closed switch	
<ul style="list-style-type: none"> • at 690 V / for combination switch + gG fuse / maximum permissible 	7 500 A
<ul style="list-style-type: none"> • for combination switch + fuse / at 400 V / maximum permissible 	7 000 A
<ul style="list-style-type: none"> • for combination switch + fuse / at 500 V / maximum permissible 	7 000 A
Short-time current resistance (I_{cw})	
<ul style="list-style-type: none"> • at 690 V AC/440 V DC / limited to 1 s / rated value 	3 kA

Main circuit

Operating power	
<ul style="list-style-type: none"> • at AC-23 A / at 400 V / at 50/60 Hz / rated value 	30 kW
<ul style="list-style-type: none"> • at AC-23 A / at 500 V / at 50/60 Hz / rated value 	37 kW
<ul style="list-style-type: none"> • at AC-23 A / at 690 V / at 50/60 Hz / rated value 	55 kW
Operating voltage	
<ul style="list-style-type: none"> • at AC / at 50/60 Hz / rated value 	690 V

Auxiliary circuit

Number of connected NC contacts / for auxiliary contacts	0
Number of connected NO contacts / for auxiliary contacts	0
Number of connected CO contacts / for auxiliary contacts	0

Suitability

Suitability for use

• Main switch	Yes
• switch disconnecter	Yes
• EMERGENCY OFF switch	Yes
• safety switch	Yes
• maintenance/repair switch	Yes

Product details

Product feature / interlock No

Product component

• Trip indicator	No
• Voltage trigger	No
• undervoltage release	No
• undervoltage release with leading contact	No

Product extension

• Auxiliary switch	Yes
• optional	
— motor drive	No
— Voltage trigger	No

Short circuit

Short-circuit current making capacity (I_{cm})

• for switch disconnecter / at 690 V AC/440 V DC / without fuse link / rated value / minimum	7 kA
--	------

Conditional short-circuit current / with line-side fuse protection

• at 500 V / by gG fuse / rated value	100 kA
---------------------------------------	--------

Short-time current resistance (I_{cw}) / limited to 1 s / rated value

3 kA

Connections

• Type of connectable conductor cross-sections / for copper conductor / solid	1x (1 ... 16 mm ²)
• Type of connectable conductor cross-sections / for copper conductor / finely stranded / with core end processing	1x (1 ... 35 mm ²)
• Type of connectable conductor cross-sections / for copper conductor / stranded	1x (6 ... 35 mm ²)

Type of electrical connection

• for main current circuit	Box terminal
----------------------------	--------------

Mechanical Design

Height	119 mm
Width	121.3 mm

Depth	69.5 mm
Mounting position	any
Mounting type	Screw fixing and standard rail mounting 35 mm
Mounting type	
<ul style="list-style-type: none"> • front mounting with 4-hole attachment 	No
<ul style="list-style-type: none"> • front mounting with central attachment 	No
<ul style="list-style-type: none"> • rail mounting 	Yes
Net weight	900 g

Environmental conditions

Degree of pollution	3
---------------------	---

Certificates

• Reference identifier / acc. to DIN EN 61346-2	Q
• Reference identifier / acc. to DIN EN 81346-2	Q

General Product Approval

Declaration of Conformity



CCC



VDE

[Miscellaneous](#)



EG-Konf.

Further information

Information- and Downloadcenter (Catalogs, Brochures,...)

<http://www.siemens.com/lowvoltage/catalogs>

Industry Mall (Online ordering system)

<https://mall.industry.siemens.com/mall/en/en/Catalog/product?mlfb=3KD2644-2ME10-0>

Service&Support (Manuals, Certificates, Characteristics, FAQs,...)

<https://support.industry.siemens.com/cs/ww/en/ps/3KD2644-2ME10-0>

Image database (product images, 2D dimension drawings, 3D models, device circuit diagrams, ...)

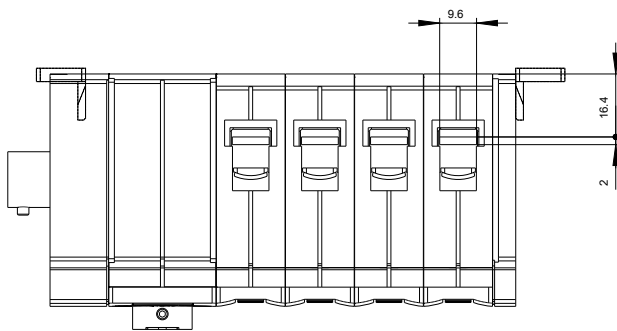
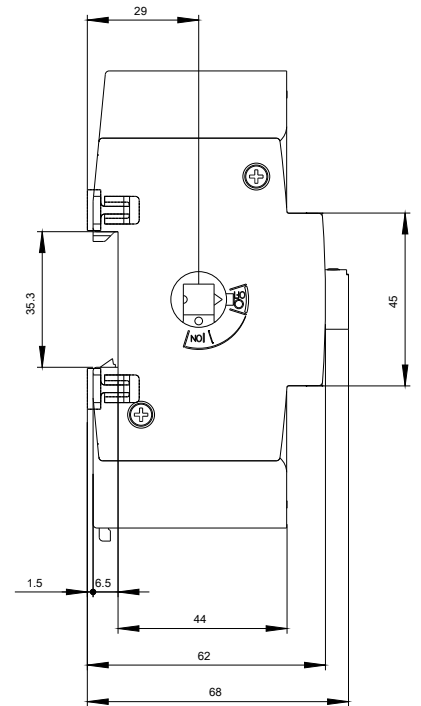
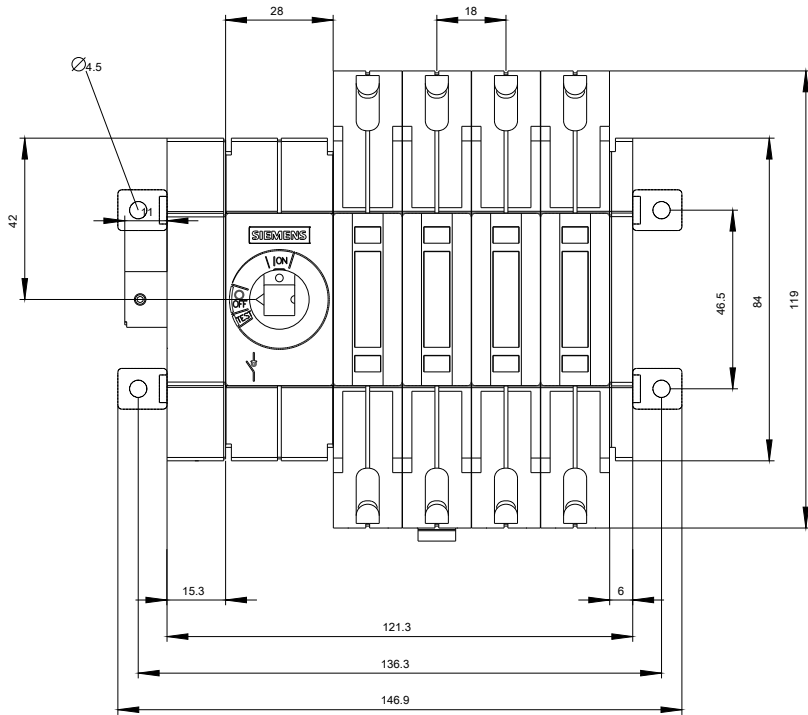
http://www.automation.siemens.com/bilddb/cax_en.aspx?mlfb=3KD2644-2ME10-0

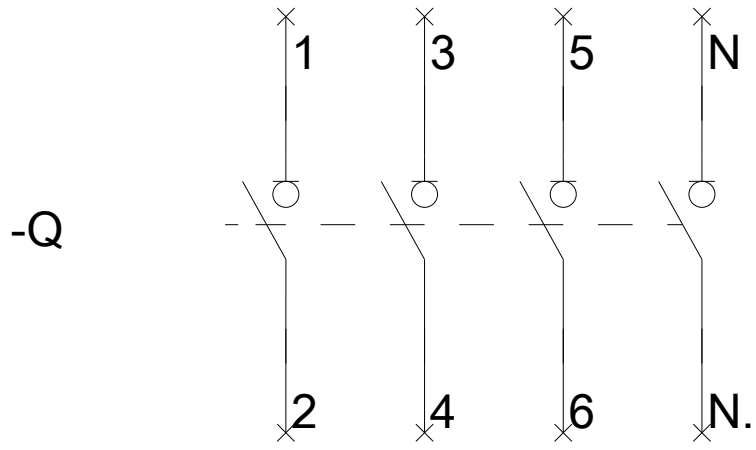
CAX-Online-Generator

<http://www.siemens.com/cax>

Tender specifications

<http://www.siemens.com/specifications>





-CR

