

Foot Switches SFS-UFS Accessories

IMO

Technical Datasheet

AC-KIT20

Kit for joining two footswitches together
Polymer thermoplastic



AC-KIT22

Carrying rod L=600mm
For use with **AC-K1T20**



AC-KIT29

Aluminium rod Ø=25mm, L=740mm with M25x1.5 threaded ends
For use with **AC-KIT33** supplied with brass nuts & gaskets



AC-KIT30

Kit for joining two footswitches together
Polymer thermoplastic. For use with **AC-KIT29**



AC-KIT31

Carrying rod Ø=25mm, L=660mm
For use with **AC-KIT32**, **AC-KIT33** & **AC-KIT35**



AC-KIT32

Emergency stop station 1NC
For use with **AC-KIT29/31**



AC-KIT33

Emergency Stop station 1NC+1NO
For use with **AC-KIT29**



AC-KIT34

Emergency Stop station 2NC
For use with **AC-KIT29/31**



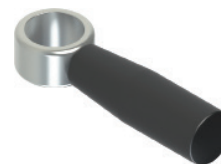
AC-KIT40

Double carrying rod L=400mm
For use with three foot switches joined together by two **AC-KIT20**



AC-KIT50

Metal handle kit
For use with **AC-KIT29/31**



AC-KIT60

Metal stabilising plate
For single foot switches



AC-KIT61

Stabilising plate for two joined foot switches
For use with **SFS/UFS** foot switches



AC-KIT71

Metal shroud
For use with **UFS** foot switches



Foot Switches SFS-UFS

Accessories

IMO

Technical Datasheet

Contact Blocks

Housing Material: Glass reinforced polymer self-extinguishing shock proof thermoplastic

Electrical Data	
Thermal current (I _{th})	10A
Rated insulation voltage (U _i)	500VAC 600VDC

Utilisation Categories	Alternating current: AC15 (50/60Hz)		
	Voltage V	250	400
Current A	6	4	1
Direct current: DC13			
Voltage V	24	125	250
Current A	6	1.1	0.4

AC-C501

1NO+1NC Snap action
for use with SFS/UFS foot switch

AC-C501-G

1NO+1NC Snap action (gold plated contact)
for use with SFS/UFS foot switch

AC-C601

1NO+1NC Slow action
for use with SFS/UFS foot switch

AC-C1001

2NO Slow action

AC-C1501

2NO Slow action shifted

