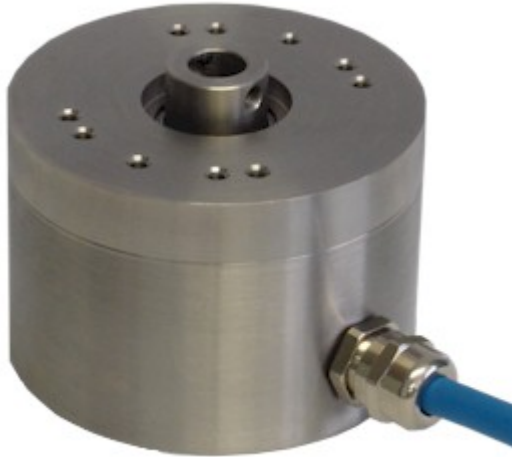


Series 08 incremental stainless steel encoder up to 1/2"



0 8 X X - 1 3 X S - X X X X

	<u>Shaft Size</u>	<u>Connection</u>	<u>Resolution - ppr</u>
<i>Hollow Shaft</i>		1 = 2 m cable	
A4 = 3/8 "		2 = 5 m cable	
A5 = 1/2 "			
08 = 8 mm		<u>Housing</u>	
10 = 10 mm		S = Stainless Steel	
12 = 12 mm			

5...24 Volt Extended Line Driver is standard, optional Current Sink Open Collector is available



Zone 0, Class 1 Div 1

Technical Data

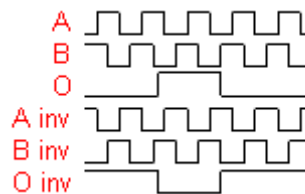
Operating temp:	- 20 ...+ 60 degrees C - 4 ...+ 140 degrees F
Max frequency:	100 kHz
Current consumption:	50 mA (max.)
Power supply:	5 - 24V
Weight:	23 oz (0.75 kg)
Protection:	IP 66 /X7 M (1m depth for 1 hour on IP67M)
Housing:	Stainless Steel
Shaft:	Stainless Steel
Bearings:	3 x 6803 ZZ C2
Torque:	0.4 oz/in (3 N-cm)
Humidity:	Up to 98% permissible
Speed:	3000 RPM max.
Shock:	10g (6msec)
Vibration:	5g (500 Hz)
Shaft load:	Radial / axial max 10 lbs
Line driver output max:	50 mA per channel
Max. ppr	1500
Inertia:	30 gm-cm ²

Connection Options

	9 pole	Cable
PS GND	1	Black
PS 5 ... 24 V	2	Red
Output A	3	White
Output B	4	Blue
Output O	5	Yellow
Output A inv	6	Green
Output B inv	7	Violet
Output O inv	8	Brown

Output

Diagram is shown with clockwise shaft rotation viewed from grub screw side



Certifications

To use the encoder in a hazardous area, **a safety barrier or galvanic isolator has to be used**. Our six channel barrier and isolator work with our encoders. [Isolator Data Sheet](#)

IP 67M

ATEX [\[Certificate\]](#)

IECEX [\[Certificate\]](#)

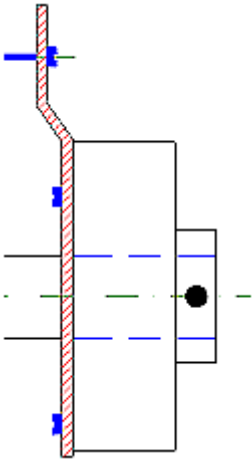
CSA [\[Certificate\]](#)

GOST-CU [\[Certificate\]](#)

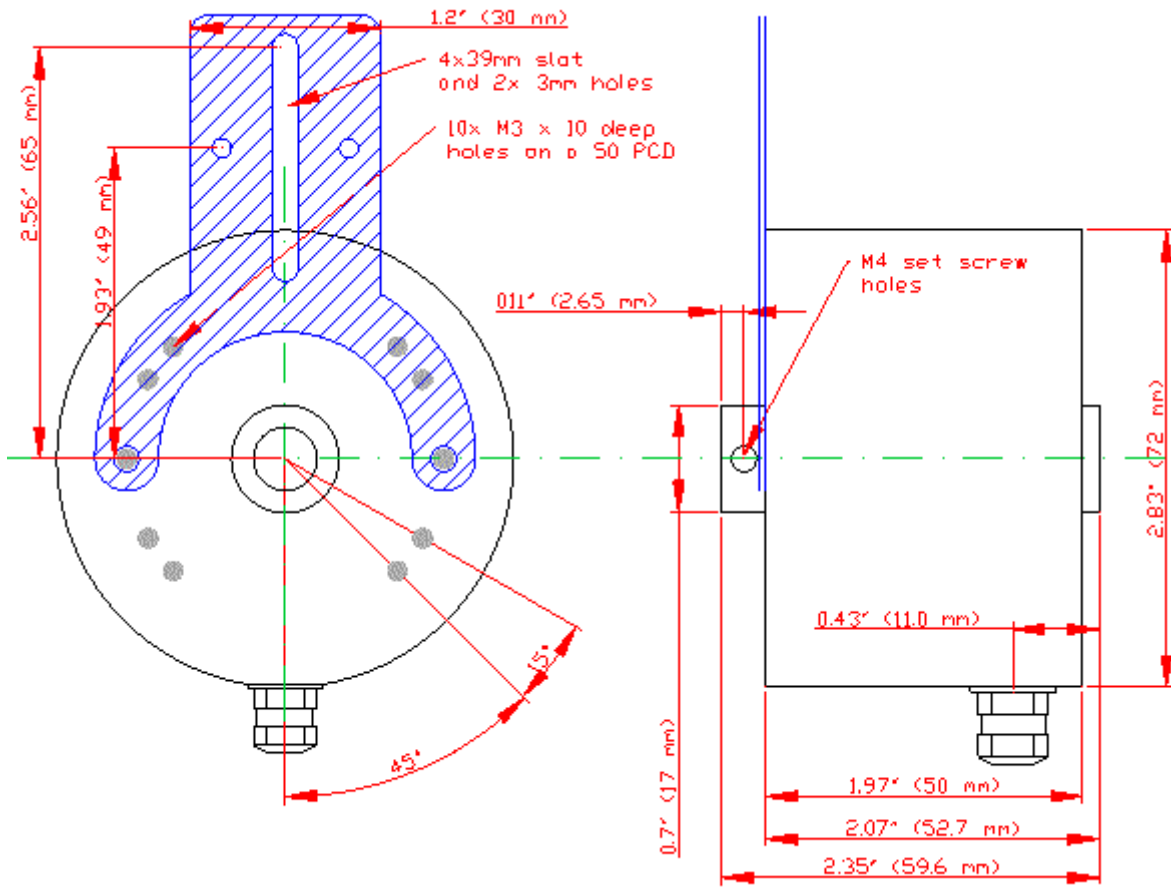
Mounting Instructions

Mount the tether on the machine or motor-frame. The tether can be bent to adapt to any surface. This assembly allows the encoder to float and increases the lifetime of the bearings. Connect the encoder as per wiring specifications. Make sure power supply is within the proper voltage and current rating. Encoder can be mounted with the setscrew on the machine side or on the opposite side for either CW or CCW. See datasheet for CW and CCW directions of the outputs.

Technical data for tether: 0.3 mm stainless steel sheet



Dimensions



Hohner Automation Ltd.
Whitegate Industrial Estate
Wrexham LL13 8UG
United Kingdom

Tel: +44 (0) 1978 363-888
Fax: +44 (0) 1978 364-586
E-mail: uksales@hohner.com
Web: www.hohneronline.co.uk

