

# Multi-Pole Connectors - Assemblies



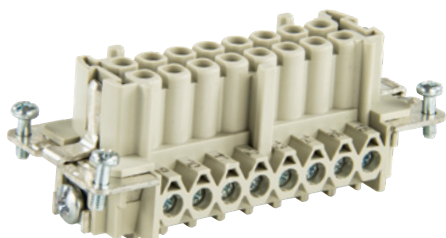
## Range of 16 Amp, 500 Volt Multipole Connectors

Heavy duty connectors specifically designed for use in especially tough environment conditions. The main areas of use are the automotive industry, in packaging machinery and equipment, as well as for instrumentation, control and automation equipment. They permit simple and time-saving installation of machinery and equipment. Their housings protect against mechanical impact and prevents entry of spray water and dust.

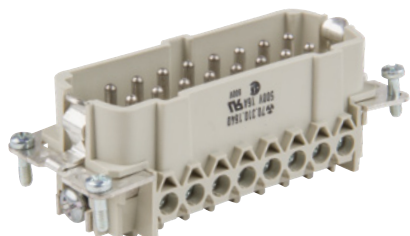
16PE16AP



16PE16AFI



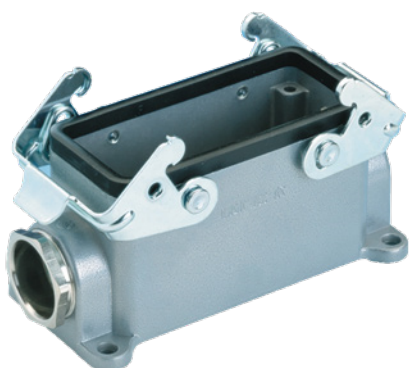
16PE16AMI



16PE16APS



16PE16ASS



### 6 Pole + Earth

Ref No	Description
<b>6PE16AP</b>	Plug - Lateral Entry Hood c/w PG Cable Entry
<b>6PE16AFI</b>	Female Insert
<b>6PE16AMI</b>	Male Insert
<b>6PE16APS</b>	Panel Socket - Open Base
<b>6PE16ASS</b>	Surface Socket - Closed Base c/w PG Standard Cable Entry

### 10 Pole + Earth

Ref No	Description
<b>10PE16AP</b>	Plug - Lateral Entry Hood c/w PG Cable Entry
<b>10PE16AFI</b>	Female Insert
<b>10PE16AMI</b>	Male Insert
<b>10PE16APS</b>	Panel Socket - Open Base
<b>10PE16ASS</b>	Surface Socket - Closed Base c/w PG 16 Standard Cable Entry

### 16 Pole + Earth

Ref No	Description
<b>16PE16AP</b>	Plug - Lateral Entry Hood c/w PG Cable Entry
<b>16PE16AFI</b>	Female Insert
<b>16PE16AMI</b>	Male Insert
<b>16PE16APS</b>	Panel Socket - Open Base
<b>16PE16ASS</b>	Surface Socket - Closed Base c/w PG 21 Standard Cable Entry

### 24 Pole + Earth

Ref No	Description
<b>24PE16AP</b>	Plug - Lateral Entry Hood c/w PG Cable Entry
<b>24PE16AFI</b>	Female Insert
<b>24PE16AMI</b>	Male Insert
<b>24PE16APS</b>	Panel Socket - Open Base
<b>24PE16ASS</b>	Surface Socket - Closed Base c/w PG 21 Standard Cable Entry

# Multi-Pole Connectors - Single Components



Range of 16 Amp, 500 Volt Multipole Connectors

## Hoods

### Features:

- IP65 rated
- Material: Die Cast Aluminium Alloy
- Finish: Grey Powder Coated
- Lateral cable entry
- UV resistant
- Operating temperature -40°C to +120°C
- Standards: EN 61984:2009, IEC 60664-1:2007, IEC 60529:1998-11+Amendment 1:1999-11

Ref No	Poles	Cable Gland	Locking Lever	Dimensions (mm)		
				Length	Height	Width
<b>6PE16AP</b>	6 + Earth	PG 13.5	Single	73.6	47.5	43
<b>10PE16AP</b>	10 + Earth	PG 16	Double	73	53	56
<b>16PE16AP</b>	16 + Earth	PG 21	Double	93.5	60	56
<b>24PE16AP</b>	24 + Earth	PG 21	Double	120	56.6	

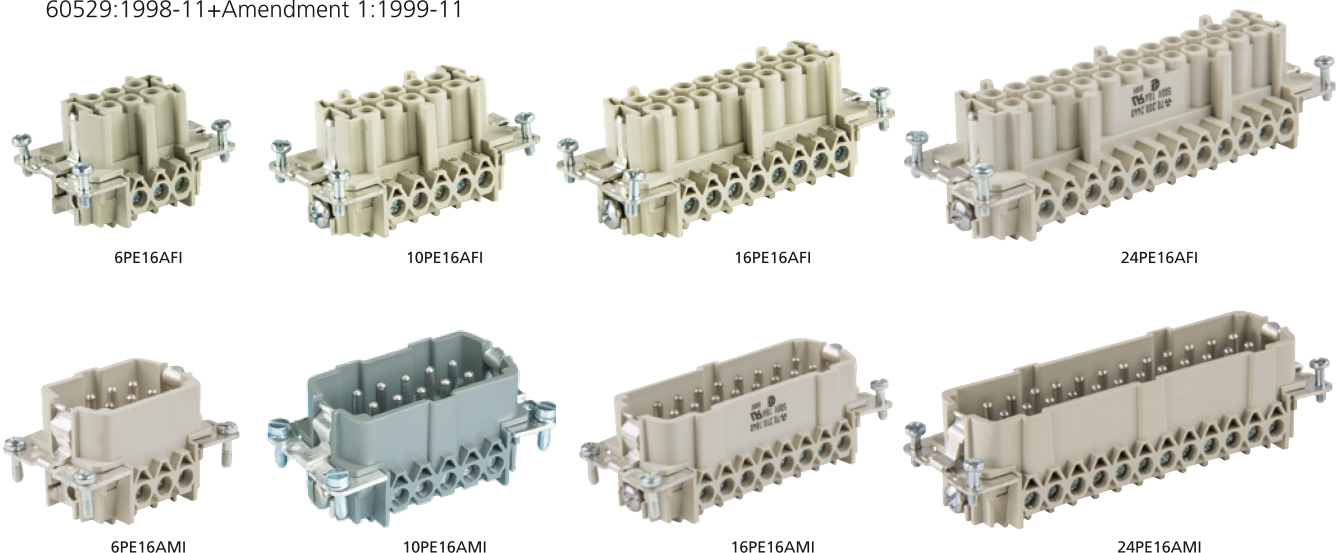


## Male and Female Inserts

### Features:

- c/w wire protection
- Screw connections
- 6kV rated impulse voltage
- 0.5 to 2.5mm<sup>2</sup> rated cross section
- Copper alloy contact material
- Operating temperature -40°C to +120°C
- Standards: EN 61984:2009, IEC 60664-1:2007, IEC 60529:1998-11+Amendment 1:1999-11

Male Insert Ref No	Female Insert Ref No	Poles	Dimensions (mm)		
			Length	Height	Width
<b>6PE16AMI</b>	<b>6PE16AFI</b>	6 + Earth	50	32	34
<b>10PE16AMI</b>	<b>10PE16AFI</b>	10 + Earth	63	32	34
<b>16PE16AMI</b>	<b>16PE16AFI</b>	16 + Earth	83	32	34
<b>24PE16AMI</b>	<b>24PE16AFI</b>	24 + Earth	110	32	34



# Multi-Pole Connectors - Single Components



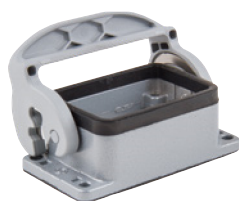
Range of 16 Amp, 500 Volt Multipole Connectors

## Panel Socket - Open Base

### Features:

- Open Bottom Base
- Material: Die Cast Aluminium Alloy
- Finish: Grey Powder Coated
- UV resistant
- Operating temperature -40°C to +120°C
- Standards: EN 61984:2009, IEC 60664-1:2007, IEC 60529:1998-11+Amendment 1:1999-11

Ref No	Poles	Locking Lever	Dimensions (mm)		
			Length	Height	Width
<b>6PE16APS</b>	6 + Earth	Single	80	29	43.5
<b>10PE16APS</b>	10 + Earth	Double	93	27.9	57.2
<b>16PE16APS</b>	16 + Earth	Double	113	27.9	56.2
<b>24PE16APS</b>	24 + Earth	Double	140	27.9	56.2



6PE16APS



10PE16APS



16PE16APS



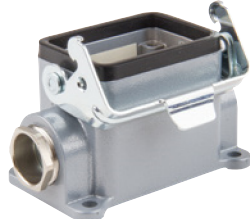
24PE16APS

## Surface Socket - Closed Base

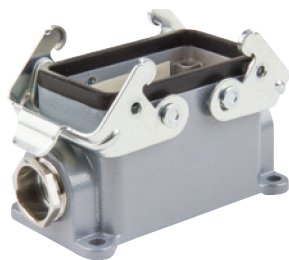
### Features:

- Closed Bottom Base
- IP65 rated
- Material: Die Cast Aluminium Alloy
- Finish: Grey Powder Coated
- Lateral cable entry
- UV resistant
- Operating temperature -40°C to +120°C
- Standards: EN 61984:2009, IEC 60664-1:2007, IEC 60529:1998-11+Amendment 1:1999-11

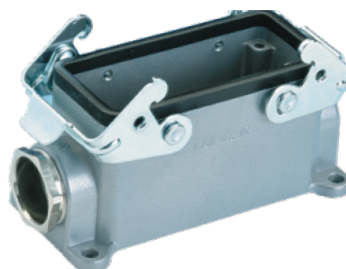
Ref No	Poles	Cable Gland	Locking Lever	Dimensions (mm)		
				Length	Height	Width
<b>6PE16ASS</b>	6 + Earth	PG 16	Single	84	54.5	52
<b>10PE16ASS</b>	10 + Earth	PG 16	Double	94	54.5	52
<b>16PE16ASS</b>	16 + Earth	PG 21	Double	117	51	57
<b>24PE16ASS</b>	24 + Earth	PG 21	Double	144	56.5	57



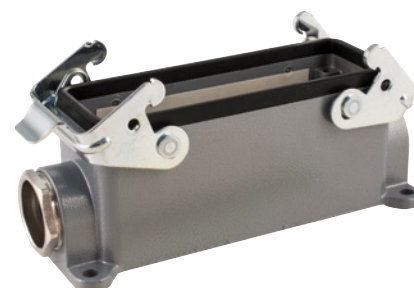
6PE16ASS



10PE16ASS



16PE16ASS



24PE16ASS