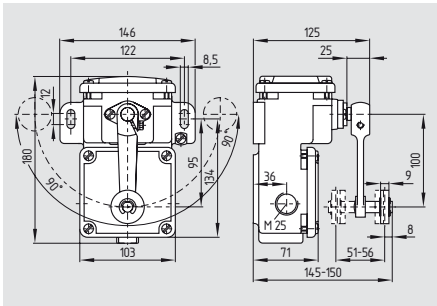


Position and limit switches

T/M 250



- Metal enclosure
- Slow action \ominus , change-over contact, 2 NC with double break or 4 NC
- Snap action, change-over contact with double break
- Switching mechanism can be set for switching to right, left or in both directions
- Blow-out magnets available to switch high DC currents
- 2 cable entries
- Protection class IP67
- Actuating speed max. 3 m/s with an actuating angle of 30°
Snap action: Min. 0.05 m/s
Slow action: Min. 0.005 m/s

Approvals



Ordering details

① D 250-② z ③ -④ -⑤

No.	Option	Description
①	T	Slow action \ominus
	M	Snap action
②	11	1 NO/1 NC
	02	2 NC
	02/02	4 NC (2 right/2 left)
③	ü *	Slow action with overlapping contacts
④	c	Magnetic blow-out
	r	Latching 2 x 45°
⑤	t **	Tropical and temperature-resistant version - 40 °C ... + 200 °C
	1276-2	Gold-plated contacts

Technical data

Standards: IEC/EN 60947-5-1
 Enclosure: Grey cast iron, galvanized and painted
 Protection class: IP67 to EN 60529
 Contact material: Silver
 Switching system: Snap and slow action with double break
 Contact type: Snap action: change-over contact, up to 250 V, with 2 galvanically separated contact bridges
 Slow action: change-over contact, up to 250 V, with 2 galvanically separated contact bridges, positive break NC contacts \ominus
 Connection: Screw terminals M 3.5
 Cable section: 2.5 mm² (including conductor ferrules)

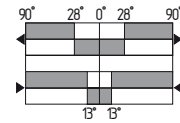
U_{imp} :
 - Snap action: 4 kV
 - Slow action: 6 kV
 U_e :
 - Snap action: 250 V
 - Slow action: 400 V
 - Ordering suffix -t: 500 V
 I_{the} : 16 A
 I_g/U_e :
 - Snap action: 4 A / 230 V
 - Slow action: 4 A / 400 V
 Utilisation category: AC-15
 Max. fuse rating: 16 A gG D-fuse
 Contact break:
 - Snap action: max. 2 x 2.5 mm;
 - Slow action: max. 2 x 2 mm
 Switchover time: Snap action: 35 ms
 Bounce duration: Snap action: 5 ms
 Ambient temperature: -30 °C ... +90 °C
 Mechanical life:
 - Snap action: 5 million operations
 - Slow action: 10 million operations
 Contact life: 10 million operations
 at 1 A / 400 V, $\cos \varphi = 0,4$
 Switching frequency: max. 3000/h
 Actuating speed: max. 3 m/s at 30° actuating angle
 - Snap action: 2-pole: min. 0.05 m/s,
 1-pole: min. 0.005 m/s
 - Slow action: min. 0.005 m/s

Contact variants

Snap action

1 NO contact

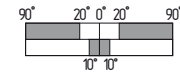
1 NC contact



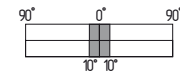
Slow action

1 NO contact

1 NC contact

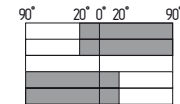


2 NC contacts

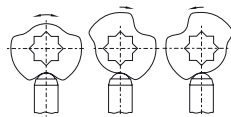


2 NC contact to the left/

2 NC contact to the right



Note



Switching mechanism can be set
for switching to right, left or in both directions

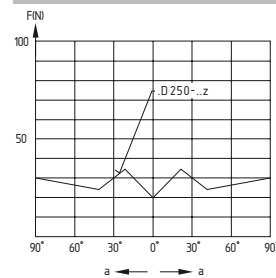
Position latching
Available with 2 x 45° position latching, suffix -r

Also possible with position latching: 2 x 30°, 2 x 60°, 2 x 90°, 1 x 45°, 1 x 60° and 1 x 90°

* only for 1 NO contact/1 NC contact (-11z)

** only up to max. 3 contacts

Force-travel diagram



Legend

F: Actuating force:
 a: actuating travel

It is not possible to combine version with magnetic blow-out (ordering suffix c) and temperature-resistant and tropical version (ordering suffix t)