

### Pushbutton head RXJT

Category:	Pushbutton Heads
Series:	RX-JUWEL
Panel cut-out:	Ø 22.3 mm
Protection class:	II (protective insulation)
Degree of protection:	IP65
Travel:	6 mm
Illumination:	yes
With labelling option:	yes
Front bezel	charcoal
Shape:	round

### Optional accessory



Contact block, maintained AF



Contact block, maintained AF2



Contact block, maintained AF2\_AU



Illuminated contact block, maintained AFL



Illuminated contact block, maintained AFL2



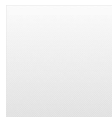
Illuminated contact block, maintained AFL2\_AU



Illuminated contact block, maintained AFL\_AU



Contact block, maintained AF\_AU



AS-Interface module ASI\_BTK30\_01



AS-Interface module ASI\_BTK30\_02



Contact block, momentary AT



Contact block, momentary AT2



Contact block, momentary AT2\_AU



Contact block, momentary ATI



Contact block, momentary ATI\_AU



Illuminated contact block, momentary ATL



Illuminated contact block, momentary ATL2



Illuminated contact block, momentary ATL2\_AU



Illuminated contact block, momentary ATL\_AU



Contact block, momentary ATO



Contact block, momentary ATO\_AU



Contact block, momentary AT\_AU



Two-step contact block, momentary AZ011\_97



Two-step contact block, momentary AZ011\_97\_AU



Contact block, momentary AZ2



Contact block, momentary AZ2N



Contact block, momentary AZ4I



Contact block, momentary AZ4O



Illuminated contact block, momentary AZL4I



Illuminated contact block, momentary AZL4O



Contact block, momentary AZOO



Contact block, momentary AZOO\_AU



Contact block, momentary AZOW1



Contact block, momentary AZOW1\_AU



CANopen basic module CO\_BTK30\_01



CANopen basic module CO\_BTK30\_02



CANopen basic module CO\_BTK30\_03



CANopen basic module CO\_BTK30\_04



Contact unit, momentary CT2



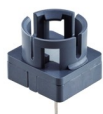
Contact unit, momentary CTF



Contact unit, momentary, incl. RGB LED CTFS\_24RGB



Contact unit, momentary, with 2-colour LED red/green CTFS\_24R\_G



Contact unit, momentary, for 250V~ CTF\_250



Illuminated contact unit, momentary CTL2



Illuminated contact unit, momentary CTLF



Illuminated contact unit, momentary, for 250V~ CTLF\_250



Illuminated contact unit, momentary CTLP\_485



Contact unit, momentary CTP\_485



Illuminated contact unit, momentary CZTLP



Illuminated contact unit, momentary CZTLP2



Contact unit, momentary CZTP



Contact unit, momentary CZTP2



Battery-free radio contact block (868.3 MHz) for actuators with 16mm bayonet DFA16



Battery-free radio contact block (868.3 MHz) for actuators with 22mm bayonet DFA22



Insulated plastic enclosure, 1 mounting hole DIRL1V-R22



Insulated plastic enclosure, 1 mounting hole DIRL1VGB-R22



Insulated plastic enclosure, 2 mounting holes DIRL2V-R22



Insulated plastic enclosure, 3 mounting holes DIRL3V-R22



Insulated plastic enclosure, 3 resp. 4 mounting holes DIRL4V-R22



Profibus basic module DP\_BTK30\_01



Profibus basic module DP\_BTK30\_02





Profibus basic module DP\_BTK30\_03



Profibus basic module DP\_BTK30\_04



EtherCAT basic module EC\_BTK30\_01



EtherCAT basic module EC\_BTK30\_02



EtherCAT basic module EC\_BTK30\_03



EtherCAT basic module EC\_BTK30\_04



EtherNet IP basic module EN\_BTK30\_01



EtherNet IP basic module EN\_BTK30\_02



EtherNet IP basic module EN\_BTK30\_03



EtherNet IP basic module EN\_BTK30\_04



Insulated plastic enclosure, 1 mounting hole IRL1M



Insulated plastic enclosure, 1 mounting hole IRL1M\_GELB



Insulated plastic enclosure, 2 mounting holes IRL2M



Insulated plastic enclosure, 3 mounting holes IRL3M



Insulated plastic enclosure, 5 mounting holes IRL5M



Profinet I/O basic module PN\_BTK30\_01



Profinet I/O basic module PN\_BTK30\_02



Profinet I/O basic module PN\_BTK30\_03



Profinet I/O basic module PN\_BTK30\_04



External nameplate holder RXJABT



Insulated plastic enclosure with 1 mounting hole SIL22/1



High insulated plastic enclosure with 1 mounting hole SILH22/1



Sealing cap TK28S

