
A-C-H-G-SST-126015 (ORDER NO. 126015)

Straight actuator for safety switch CTP

- ▶ Straight actuator
- ▶ Two safety screws included



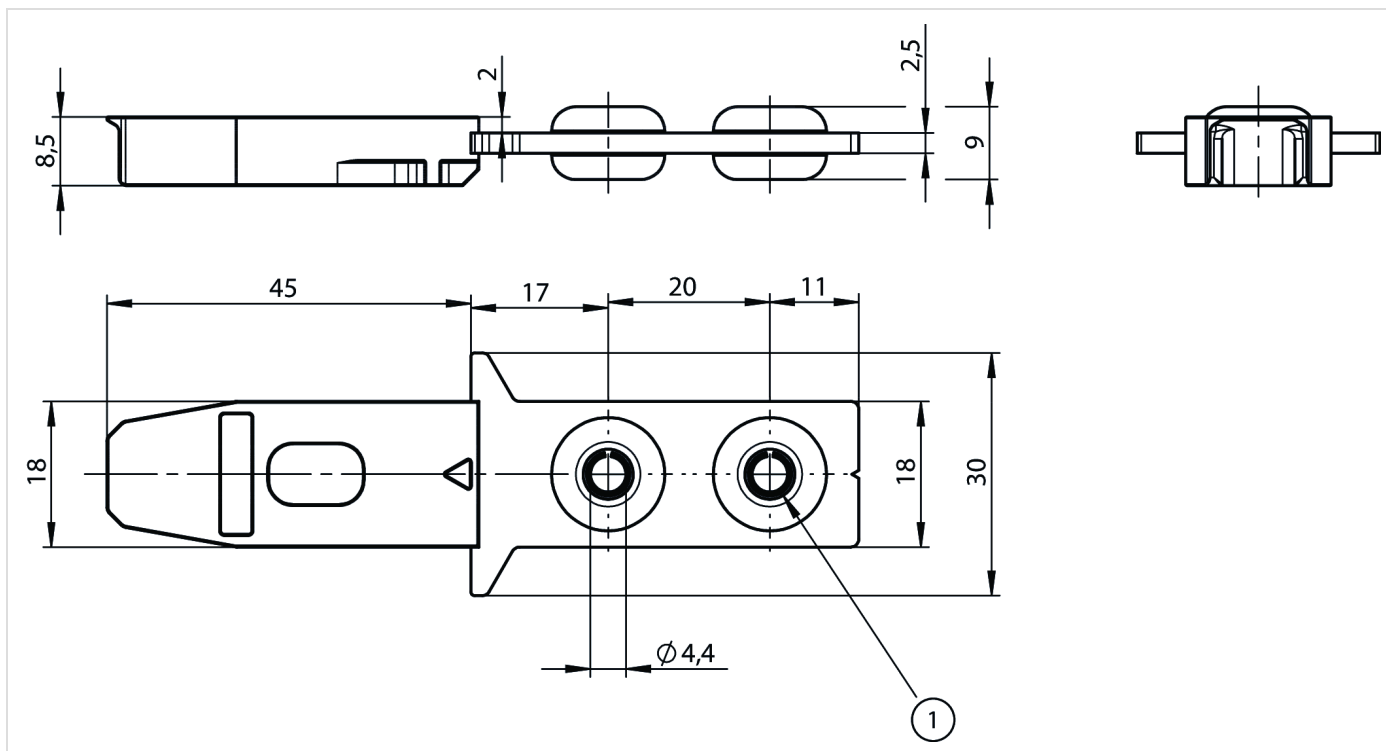
Description

Straight actuator

The straight actuator is used on sliding doors or hinged doors with door radii greater than 300 mm. Safety screws prevent unscrewing of the actuators.

The safety screws included can be inserted with a normal tool, but cannot be removed again.

Dimension drawings



1 2x non-removable screws M4 included

Technical data

Electrical connection ratings

Power supply

Inductive via read head

Mechanical values and environment

Ambient temperature -20 ... +55 °C

Degree of protection IP67/IP69/IP69K

Installation orientation any

Locking force F_{\max} 3900 N

Locking force F_{Zh} 3000 N
($F_{Zh} = F_{\max}/1.3$)

Material

Encapsulation fiber reinforced plastic, red

Mounting Stainless steel

Bush NBR

Mechanical life 1×10^6

Overtravel 5 mm

Accessories

Mounting accessories

Safety screws M4 x 14

074063
M4X14/V100

- ▶ Safety screws M4 x 14
- ▶ Packaging unit 100 pieces

Contacts

🏠 EUCHNER GmbH + Co. KG
Kohlhammerstraße 16
70771 Leinfelden-Echterdingen

☎ +49 711 7597-0

📠 +49 711 753316

✉ [info\(at\)euchner.de](mailto:info(at)euchner.de)