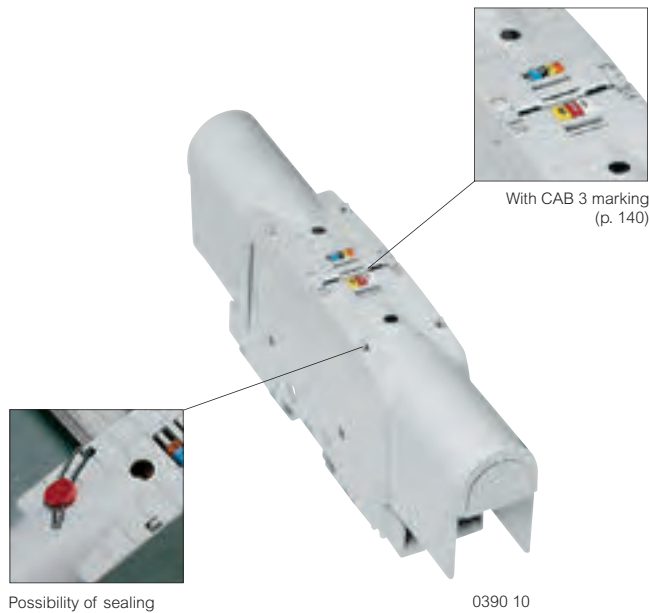


Viking 3 heavy duty terminal blocks

for copper and aluminium cables



Technical characteristics p. 135

Pack	Cat. Nos.	Heavy duty terminal blocks		
		For copper and aluminium cables		
		IK 04 Conform to IEC 60947-7-1, EN 60947-7-1 UL 1059 and 486 E - CSA 22-2 Fire resistant IEC 60695-2-11 : 960°C (except cover) V2 according to UL 94 Bridging the gap between the enclosure and external cables Fixed using metal clip for rails 15 mm depth and EN 60715, 15 mm depth or on plate with screws Fitted with hinged covers with cut-outs Permits the use of CAB 3 markers Test via test plug Ø4 mm closed covers Blocks with identical width can be joined using a threaded rod Supports shunt with Cat. Nos. 0394 46/47		
5	0390 10	Cable - Cable Rigid or flexible connecting cable (mm ²) Al/Cu 35 to 120	Rigid or flexible connecting cable (mm ²) Cu 35 to 70	Width (mm) 42
5	0390 11	Al/Cu 70 to 300	Cu 70 to 150	55
		Cable lug - Cable lug		
5	0390 13	Connecting plate max. (mm ²) Al/Cu 95	Connecting plate max. (mm ²) Al/Cu 95	Width (mm) 36
5	0390 14	Al/Cu 150	Al/Cu 150	42
5	0390 15	Al/Cu 300	Al/Cu 300	55
		Cable lug - Cable		
5	0390 17	Connecting plate max. (mm ²) Al/Cu 150	Rigid or flexible connecting cable (mm ²) Cu 35 to 95	Width (mm) 42
5	0390 18	Al/Cu 300	Cu 70 to 150	55

Termination options

Cable - Cable



Cable lug - Cable lug



Cable lug - Cable



Pack	Cat. Nos.	Accessories
		Shunt
5	0394 46	For blocks with width 36 and 42 mm
5	0394 47	For blocks with width 55 mm

DIN rails p. 126

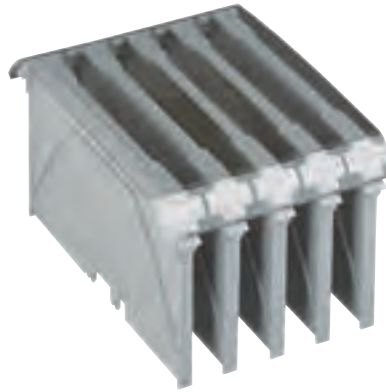


Viking 3 heavy duty terminal blocks

for copper bars and cable lugs



0390 32



0394 78 + 86

Technical characteristics **p. 135**

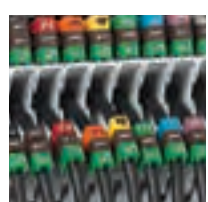
Pack	Cat. Nos.	Heavy duty terminal blocks			
		For copper bars or cable lugs			
		Conform to IEC EN 60947-7-1			
		Fire resistance : 960 °C, IEC EN 60695-2-11 V2 according to UL94			
		Insulating material : polyamide -30 °C to +100 °C			
		Bridging the gap between the enclosure and external cables			
		Plastic foot			
		For use with terminal marker sheets (p. 140)			
		Separation barriers and protective covers to be ordered separately			
		For symmetrical rails			
		Fixed using metal clip on rails 15 mm depth and EN 60715, 15 mm depth (p. 126)			
		Connecting max. (mm ²)	Width of plate (mm)	Stud (∅)	Width (mm)
5	0390 71	35	15	M 8	26
5	0390 72	70	20	M 10	34
5	0390 73	120	25	M 10	34
5	0390 74	240	35	M 12	46
		For asymmetrical rails			
		Fixed using metal clip on rails EN 60715 (p. 26)			
5	0390 31	35	15	M 8	26
5	0390 32	70	20	M 10	34
5	0390 33	120	25	M 10	34
5	0390 34	240	35	M 12	46

Pack	Cat. Nos.	Accessories	
		Separation barriers	
		Take protective covers	
		Marking possible with CAB 3 marking system (p. 140)	
10	0394 77	For terminals with width 26 mm	
10	0394 78	For terminals with width 34 and 46 mm	
		Protective covers	
		For mounting on separation barriers	
5	0394 86	For 3 terminals with width 46 mm or for 4 terminals with width 34 mm	
5	0394 88	For 4 terminals with width 26 mm	
5	0394 89	For 4 terminals with width 46 mm	



End stops p. 126

CAB 3 marking system **p. 140-142**



Enclosures **p. 14-23**



Download the full file at

<http://assets.kempstoncontrols.com/doc/Legrand%20Industrial%20and%20power%20protection%20catalogue.pdf>



KEMPSTON
CONTROLS